

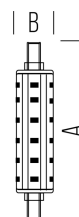
LINEAR LEDs R7S

SLD9511X3

10,7 W - 1521lm - 4000K



15.000h



| DIMENSIONS | A | B | C |
|------------|-----|----|---|
| 1 | 118 | 22 | |

| GENERAL INFORMATIONS | |
|-----------------------------|-----------------|
| Code | SLD9511X3 |
| Ean | 8031453025496 |
| Family | LINEAR LEDs R7S |
| Product line | R7s |
| Technology | LED |
| Operating temperature (° C) | -20 - +40 |
| Years warranty | 2 |
| LIGHTING DATA | |
| CCT (K) | 4000 |
| Luminous flux (lm) | 1521 |
| Beam (°) | 130 |
| Luminous Efficiency (lm/W) | 140 |
| Color rendering (CRI) | >80 |

| TECHNICAL FEATURES | |
|------------------------------|-----------|
| Base | R7s |
| Power (W) | 10,7 |
| Equivalence (W) | - |
| Supply voltage (V) / Max (V) | 220 / 240 |
| Power frequency (Hz) | 50/60 |
| Current consumption (mA) | 88 |
| Dimmer compatibility | NO |
| On/off cycles | 40000 |
| Nominal life (h) | 15000 |
| PACKAGING | |
| Packaging | BOX |
| Pack | 10 / 50 |
| Gross weight (Kg) | 3 |
| Net weight (Kg) | 0.042 |