

## FEATURES

- Plug in switching adaptor
- Incl. 4 input clips (EU,US,UK,AU)
- Double insulated
- Small low profile package
- Overload, short circuit protection
- Lowest standby power consumption
- EU CoC V5 tier 2/ EnergyStar DOE VI

## RS PRO, 12.5W Plug In Power Supply 5V dc, 2.5A, Level VI Efficiency, 1 Output USB Adapter, Australia, European Plug,

RS Stock No.: 124-2199



RS Professionally Approved Products bring to you professional quality parts across all product categories. Our product range has been tested by engineers and provides a comparable quality to the leading brands without paying a premium price.

**Product Description ATTRIBUTE 1**

From RS PRO, comes a range of high quality universal plug-in power supply. These universal power supplies are a fantastic plug in power solution as they designed for use in multiple countries. As part of our RS Pro line of power supplies, you are ensured a reliable & robust power solution. This AC/DC unit comes equipped with over voltage, over current & short circuit protection.

**General Specifications**

<b>Type</b>	USB Adapter
<b>Plug Type</b>	Australia, European Plug, UK, US
<b>Output Connector</b>	Micro USB Type B
<b>Input Connector</b>	Universal Plug
<b>Number Of Outputs</b>	1
<b>Efficiency</b>	DOE VI / CoC V5 tier 2
<b>Energy Efficiency Level</b>	VI
<b>Applications</b>	This adapter has a range of application use such as: Point of sale; Wireless communications; Peripherals; Networking; Telecommunication equipment
<b>Safety Requirements</b>	TÜV/GS EN60950- 1:2006+A11(2009)+A1(2010)+

**Electrical Specifications**

<b>Output Voltage</b>	5V dc
<b>Input Voltage</b>	100V ac, 110V ac, 115V ac, 120Vac, 127V ac, 220Vac, 230V ac, 240V ac
<b>Output Current</b>	2.5A
<b>Power Rating</b>	12.5W
<b>Dielectric Withstand</b>	3000Vac 1min 5mA input.<->output
<b>Leakage Current</b>	0.25mA max at 240VAC
<b>Overcurrent Protection</b>	Continuous, auto restart
<b>Overvoltage Protection</b>	Typ. 120%
<b>Input Frequency</b>	47Hz...63Hz
<b>Hold-up time, nom. conditions</b>	20ms at 230VAC
<b>Inrush Current</b>	<30A/230VAC
<b>No Load Power Consumption</b>	<0.075W
<b>Recovery Time <math>\pm 2\%</math></b>	Max. 1ms
<b>Ripple and Noise</b>	Max. 100mV pp
<b>Short Circuit</b>	Yes

**Mechanical Specifications**

<b>Cable Length</b>	1.5m
<b>Width</b>	29.45mm
<b>Length</b>	54.8mm
<b>Depth</b>	44.85mm
<b>Humidity</b>	10%...90% RH
<b>Weight</b>	67g

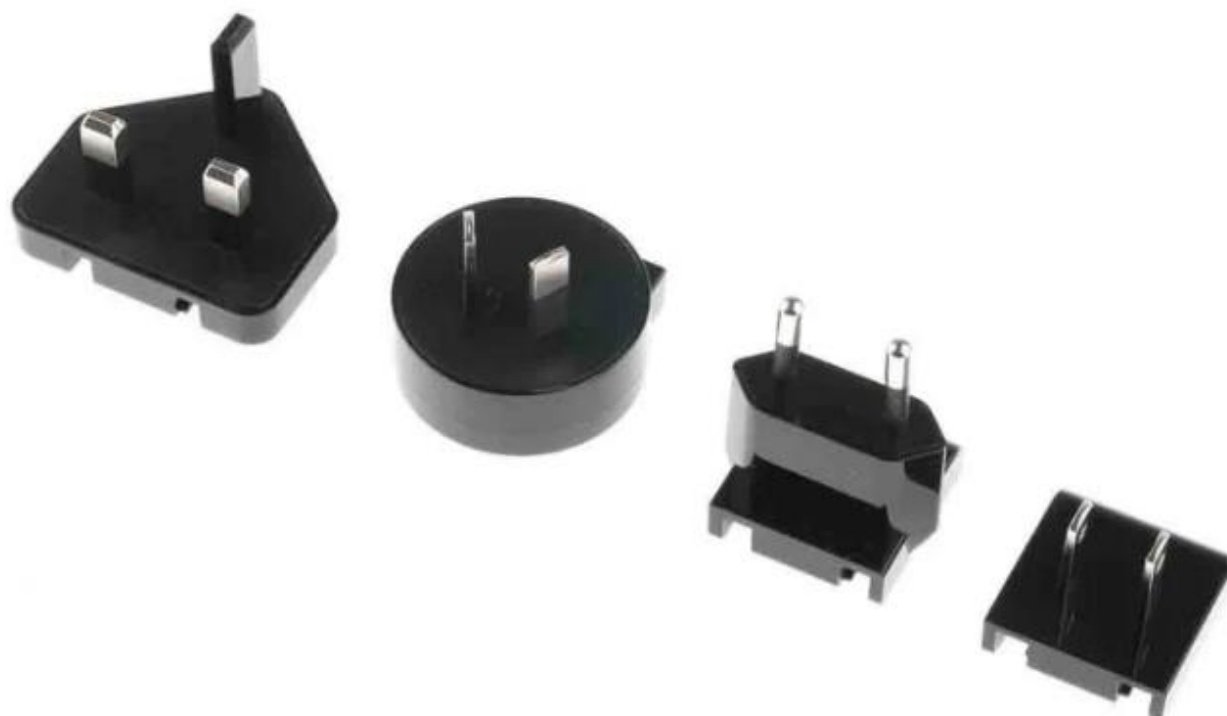
**Operation Environment Specifications**

<b>Maximum Temperature</b>	40°C
<b>Minimum Temperature</b>	-10°C

**Approvals**

<b>Standards Met</b>	CE, EN 55013, EN 55014-1, EN 55014-2, EN 55020, EN 55022, EN 55024, EN 61000-3-2, EN 61000-3-3, EU CoC V5, TUV/GS EN 60950-1, UL 60065
<b>Compliance/Certifications</b>	CE, UL, RoHS





## Technical Drawing:

