

Features

- Rated currents up to 6A
- Fast-on (6.3*0.8mm)
- The compact size can be applied to various situations.
- General purpose filtering performance

RS PRO EMI Filters

RS Stock No.: 309-756



RS PRO is the own brand of RS. The RS PRO Seal of Approval is your assurance of professional quality, a guarantee that every part is rigorously tested, inspected, and audited against demanding standards. Making RS PRO the Smart Choice for our customers.

Product Description

High-performance single-phase chassis mount EMI filter Applications:

- *Electrical and electronic equipment*
- *Medical equipment*
- *Office automation equipment*
- *New energy equipment, Communication equipment.*

General Specifications

The compact size can be applied to various situations.

Electrical Specifications

*Size(Length*Width*Height)* 46*32*22.5mm

<i>Weight</i>	0.062kgs
<i>Mounting Hole Spacing</i>	54mm

Mechanical Specifications

Rated Voltage Max. 115/250VAC

<i>Rated currents</i>	6A
<i>Operating frequency</i>	50/60Hz
<i>Hipot Rating</i>	Line to Ground 2250vdc Line to Line 500Vdc
<i>Temperature range</i>	-25°C~+85°C
<i>Leakage current</i>	0.5mA/1.0mA
<i>Inductance</i>	L: 2x1.0mH ;
<i>Capacitance</i>	Cx: 0.1uF*2 ; Cy: 4700pF*2;
<i>Resistor</i>	R:1M ohm

Protection Category

IP Rating IP40

Approvals

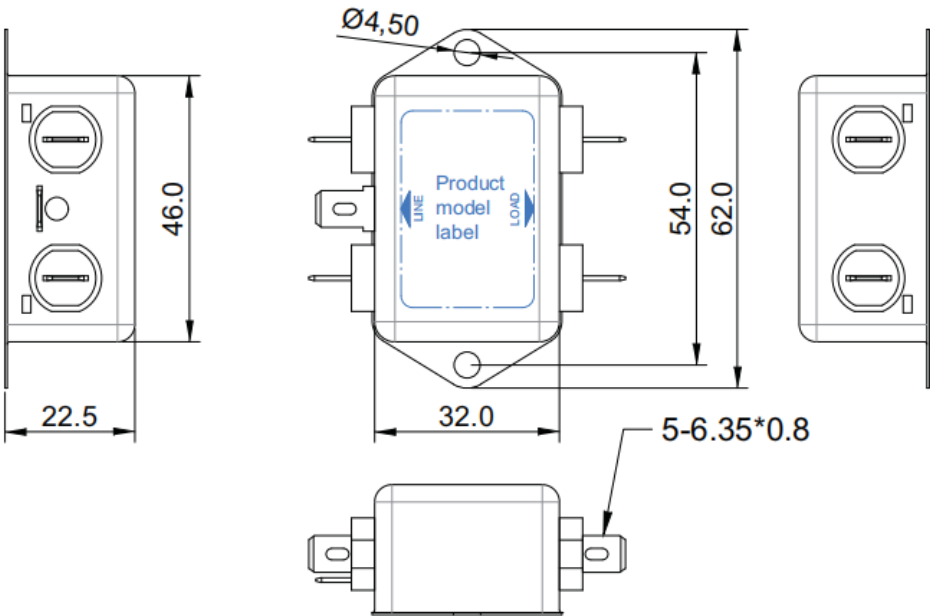
Declarations UL CE UKCA REACH ROHS

Safety Standard UL/EN 60939 , UL1283; CSA C22.2 No.8;

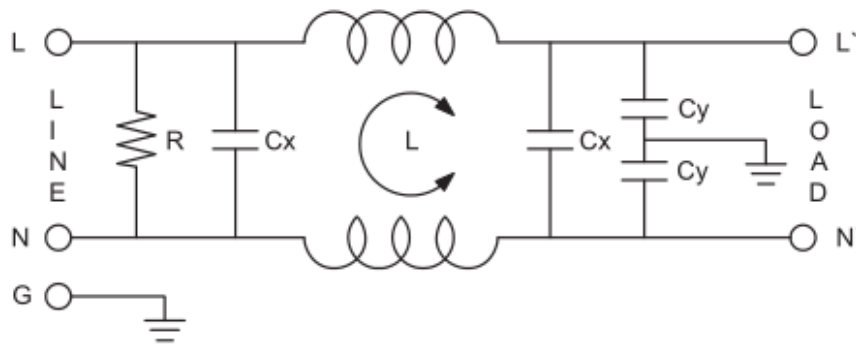
Similar Products

Stock No.	Brand	Phase Type	Mounting	Current	Dimension
237-8659	RS PRO	Single phase	Chassis mounting	10A	46*32*22.5mm

Physical Dimensions (Unit:mm)



Electrical Schematic



Insertion loss(IN 50ohm system according IEC/CISPR NO.17)

_____Common mode -----Differential mode

