

TIMBERLAND PRO® 6 In Hightower Steel Safety Toe PR



TBOA1KKP214

CE EN ISO 20345:2011



FEATURES:

- Built on women's specific last for optimal fit and comfort
- Premium full-grain leather
- Steel safety toe shaped on women's last
- Cement construction
- Metallic puncture plate
- Cast metal hardware
- Antimicrobial treated lining for odor control
- Fiberglass shank for structural support
- Weight size 7 - 700g

DYNAMIC ANTI-FATIGUE TECHNOLOGY POLYURETHANE FOOTBED:

- Durable: resists compression set over time
- Resilient: recovers for next foot strike
- Mono-sided inverted Anti-Fatigue Technology cones
- Contoured bio-mechanically engineered top surface helps maintain proper gait
- Dynamic arch adapts to different foot shapes for maximum comfort

Women's 5.5-10 11 12

USA Men's	4	4.5	5	5.5	6	6.5	7	7.5	8	8.5	9	9.5	10	11	12
USA Women's	5.5	6	6.5	7	7.5	8	8.5	9	9.5	10	10.5	11	12		
United Kingdom	3	3.5	4	4.5	5	5.5	6	6.5	7	7.5	8	8.5	9	10	11
Europe	36	36.5	37	37.5	38	38.5	39	40	41	41.5	42	42.5	43	44	46
Centimeters	22.5	23.0	23.5	24.0	24.0	25.0	25.0	26.0	26.0	26.5	27.0	27.5	28.0	29.0	30.0

ALL-WEATHER THERMOPLASTIC URETHANE OUTSOLE

- Slip resistant
- Fuel oil resistant per EN ISO 20344:20118.6
- Heat Resistant up to 248°F using EN/ISO 20344:2004 (120°C)
- Abrasion resistant
- Non Marking



Personal protective equipment — Footwear — Test method for slip resistance

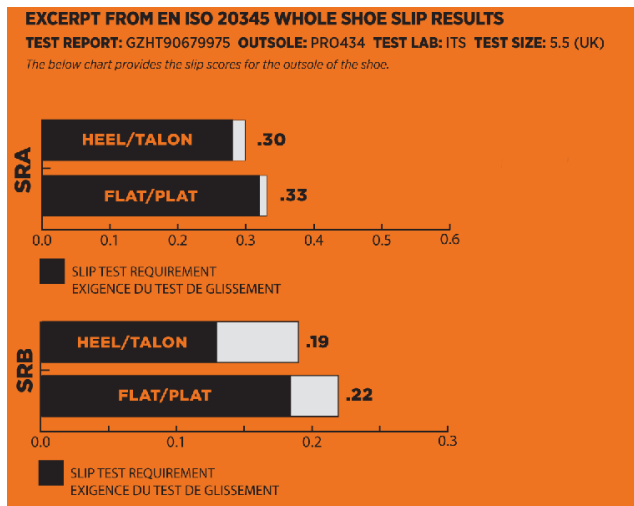


Table A.1 — Requirements for footwear resistant to slip on ceramic tile floor with SLS

Test conditions of ISO 20344:2004/Amd1:2007, Clause A.1	Coefficient of friction
Condition A (forward heel slip)	Not less than 0,28
Condition B (forward flat slip)	Not less than 0,32

A.3 Slip resistance on steel floor with glycerol

Footwear resistant to slip on steel floor with glycerol shall fulfil the requirements of Table A.2.

Table A.2 — Requirements for footwear resistant to slip on steel floor with glycerol

Test conditions of ISO 20344:2004/Amd1:2007, Clause A.1	Coefficient of friction	
	Values to be applied up to and including 2008-12-31	Values to be applied on and after 2009-01-01
Condition C (forward heel slip)	Not less than 0,12	Not less than 0,13
Condition D (forward flat slip)	Not less than 0,16	Not less than 0,18

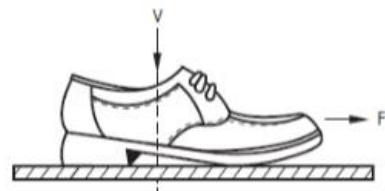


Figure 1c – Forward flat slip

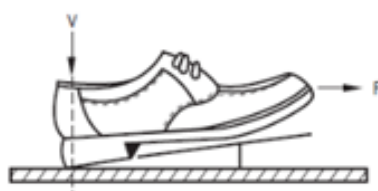
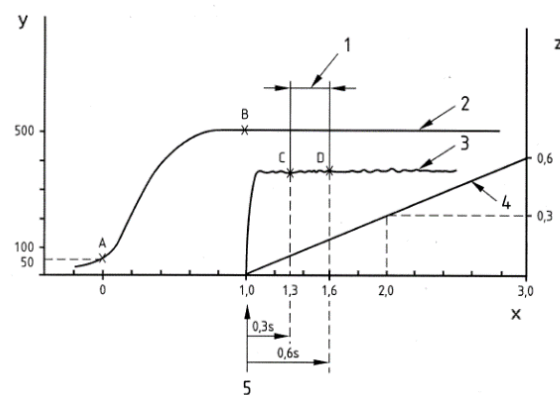


Figure 1a – Forward heel slip

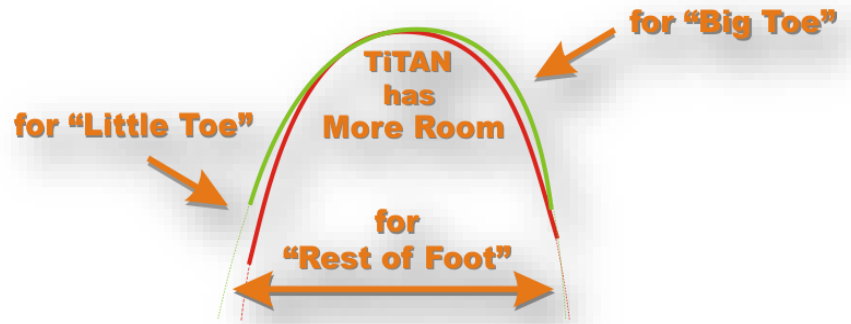
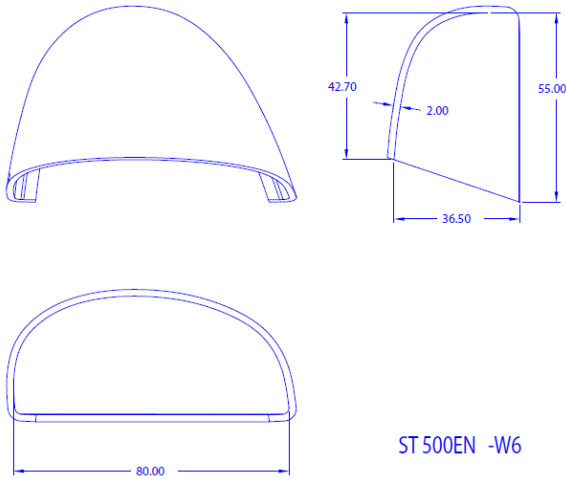


TIMBERLAND PRO® 6 In Hightower Steel Safety Toe PR



TBOA1KKP214

STEEL TOE: PRO ST 500EN



TITAN TOE SHAPE:

Asymmetrical toe shape offers more space in the toe box, where you need it most compared to traditional symmetrical safety toe shapes.

MEASUREMENTS:

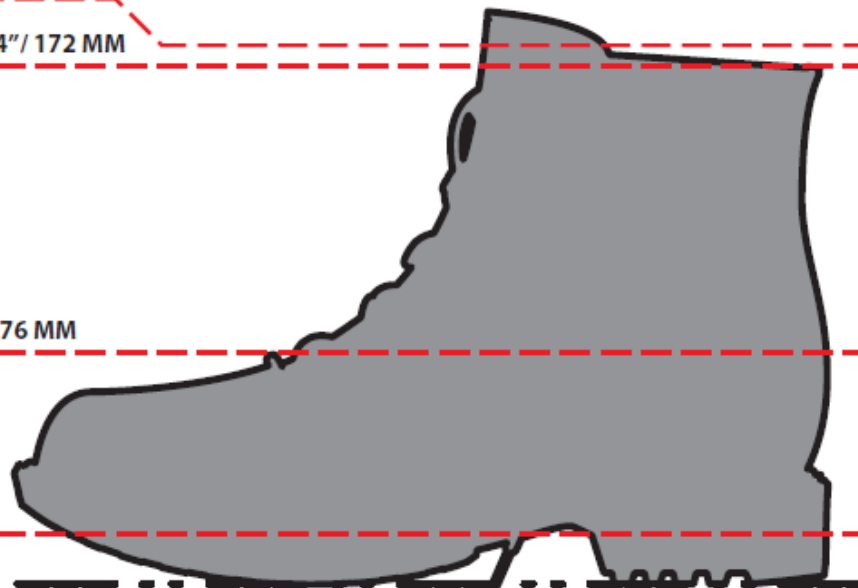
(All measurements are external)

HIGHEST POINT ON COLLAR: 7"/ 178 MM

LOWEST POINT ON COLLAR: 6 3/4"/ 172 MM

LOWEST OPENING ON BOOT: 3"/ 76 MM

HEEL BREAST: 5/8"/ 16 MM

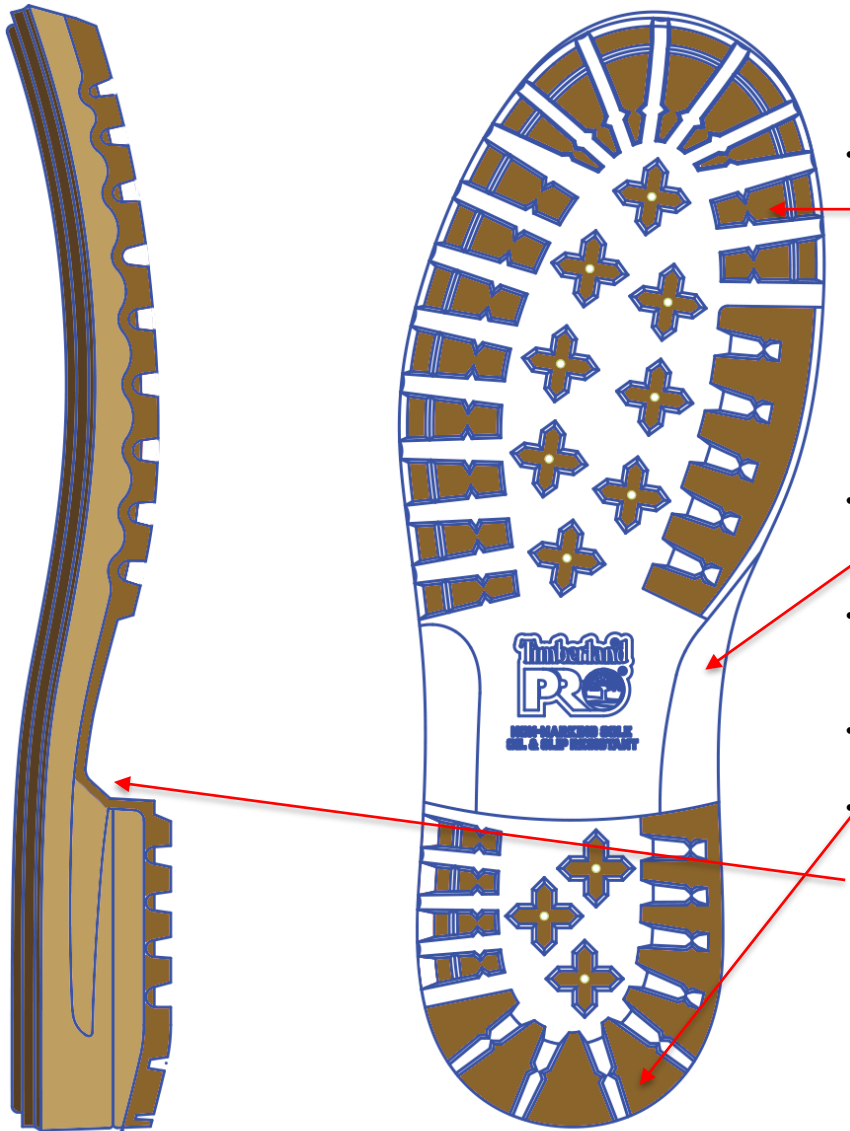


TIMBERLAND PRO® 6 In Hightower Steel Safety Toe PR



TBOA1KKP214

OUTSOLE: (PRO 434) TPU OUTSOLE WITH POLYURETHANE MIDSOLE



- All Weather TPU is specially formulated to maintain flexibility in variable weather conditions, provides enhanced traction on wet and slipper surfaces.
- Lightweight PU provides enhanced cushioning that resists compression overtime.
- Classic star lug outsole provides excellent slip resistance on a variety of surfaces.
- Enhanced surface contact in heel for slip resistance
- 5/8th inch breasted heel

LATERAL VIEW

BOTTOM VIEW

OIL RESISTANCE:

Test method	Sample	IRM903 for 46 hrs (ASTM Oil #3)	EN345 for 22 hrs (ASTM Fuel A)	Fuel B for 46 hrs (Jet Fuel)	Diesel for 22 hrs
SATRA TM63	PRO FB#1	+2.3%	+3.4%	+29.6%	+22.8%
	PU	+2.2%	+0.4	+13.5%	+1.0%
	TPU	+1.0%	+0.4	+13.1%	+5.6%
	Standard	</=12%	</=12%	</=60%	No Standard limits, but low values represent best performance.