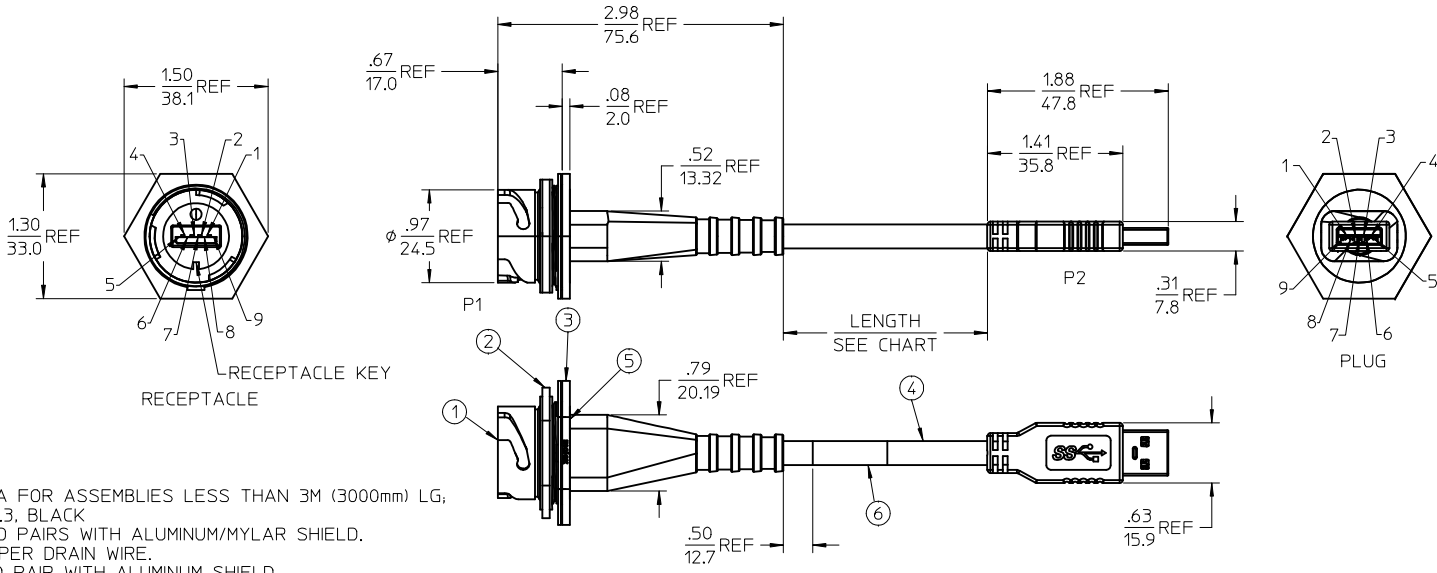
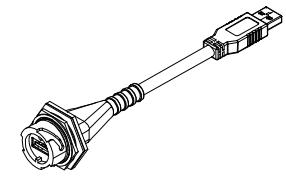
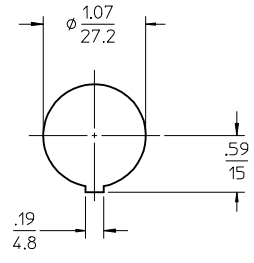


MATERIAL NO.	LENGTH
847330003	6.00 IN +.47 -0 (152.0mm +12mm-0)
847330004	31.88 IN +1.00-0 (810.0mm +25.4mm-0)
847330005	51.57 IN +1.00-0 (1310.0mm +25.4mm-0)
847330006	81.89 IN +1.57-0 (2080.0mm +40.0mm-0)
847330007	131.10 IN +3.15-0 (3330.0mm +80.0mm-0)
847330008	196.90 IN +3.94-0 (5000mm +100mm-0)
847330009	118.11 IN +3.15 -0 (3000mm +80.mm-0)
847330011	3.00 IN +.47 -0 (76.2mm +12mm-0)
847330020	12.00 IN +1.0 -0 (304.8mm +25.4mm-0)



NOTES:
 1. MATERIAL: SEE TABLE
 2. FINISHES: SEE TABLE
 3. CABLES:

- A) BIZLINK CABLE 13S0040-A FOR ASSEMBLIES LESS THAN 3M (3000mm) LG,
 OUTER JACKET: PVC, ϕ 5.50±0.3, BLACK
 (2) 28AWG SHIELDED TWISTED PAIRS WITH ALUMINUM/MYLAR SHIELD,
 WITH STRANDED TINNED COPPER DRAIN WIRE.
 (1) 28AWG SHIELDED TWISTED PAIR WITH ALUMINUM SHIELD.
 (2) 28AWG INSULATED CONDUCTORS, STRANDED, TINNED COPPER
 CABLE SHIELD: BRAIDED TINNED COPPER WIRE
 CABLE: UL2725 FILE: E164571
- B) BIZLINK CABLE 13S0041 FOR ASSEMBLIES 3M (3000mm) LG OR LONGER,
 OUTER JACKET: PVC, ϕ 6.50±0.3, BLACK
 (2) 26AWG SHIELDED TWISTED PAIRS WITH ALUMINUM/MYLAR SHIELD,
 WITH STRANDED TINNED COPPER DRAIN WIRE.
 (1) 28AWG SHIELDED TWISTED PAIR WITH ALUMINUM SHIELD.
 (1) 22AWG CONDUCTORS STRANDED TINNED COPPER
 CABLE SHIELD: BRAIDED TINNED COPPER WIRE
 CABLE: UL2725 FILE: E164571
4. CABLES TEMPERATURE, VOLTAGE & FLAME RATING: 80°C, 30V, VW-1 RATING
 5. SIGNAL RATES OF 4.8 Gbps MAY NOT BE ACHIEVED WITH LENGTHS OVER 3M (CUSTOMER TO QUALIFY IN THEIR APPLICATION)
 6. TYPE A CONNECTOR:
 SHELL: PHOSPHOR BRONZE, Ni PLATED
 CONTACTS: PHOSPHOR BRONZE, GOLD PLATED 30MNCES MIN. OVER NICKEL.
 7. CONNECTOR TESTED FOR CONTINUITY.
 8. RECEPTACLE CONNECTOR MATES WITH DUST CAP 847000016
 9. CONNECTOR RECEPTACLE SIDE IS RATED IP67 FROM BACK AND
 FRONT SIDE WHEN MOLEX DUST COVER OR MOLEX MATING CONNECTOR IS ATTACHED.
 10. ASSEMBLY IS RoHS COMPLIANT



PANEL CUTOUT
 .10/2.5 MAX PANEL THICKNESS

PIN OUT	
P1	P2
1 RED	VBUS
2 WHITE	D-
3 GREEN	D+
4 BLACK	GND
5 BLUE	StdA_SSRX-
6 YELLOW	StdA_SSRX+
7 DRAIN WIRE	
8 PURPLE	Std_SSTX-
9 ORANGE	Std_SSTX+
SHELL	BRAID
SHELL	SHELL

ITEM	QTY.	DESCRIPTION	MATERIAL	FINISH
6	1	PRODUCT LABEL	VINYL	YELLOW
5	A/R	POTTING COMPOUND	EPOXY	BLACK
4	1	USB3.0 TYPE-A CABLE SUB-ASSEMBLY, SHIELDED	AS NOTED	BLACK
3	1	PANEL GASKET	NEOPRENE	BLACK
2	1	LOCKNUT	PBT, UL-94V-0	BLACK
1	1	RECEPTACLE HOUSING	PBT, UL-94V-0	BLACK

ADD LABEL
 EC NO: IPG2015-0220
 DRWING: BRUPERT 2014/08/04
 CHKD: APPR: BWOODMAN 2014/09/23
 REV: DESCRIPTION

QUALITY SYMBOLS
 ▽=0
 ▽=0

GENERAL TOLERANCES (UNLESS SPECIFIED)

	mm	INCH
4 PLACES	± .005	± .0005
3 PLACES	± .005	± .0005
2 PLACES	± 0.13	± .010
1 PLACE	± 0.25	± .020
0 PLACE	± .005	± .0005

ANGULAR ± .5 °

DRAFT WHERE APPLICABLE MUST REMAIN WITHIN DIMENSIONS

DIMENSION STYLE
 IN/MM

DRAWN BY DATE
 BRUPERT 2013/01/16

CHECKED BY DATE

APPROVED BY DATE
 BWOODMAN 2013/08/26

MATERIAL NO.
 SEE CHART

SIZE
 C

SCALE NTS
 INCH

DESIGN UNITS
 INCH

THIRD ANGLE PROJECTION

TITLE
 USB3.0 TYPE-A RECEPT
 TO USB3.0 TYPE-A PLUG

molex

DOCUMENT NO.
 SD-84733-001

SHEET NO.
 1 OF 1

THIS DRAWING CONTAINS INFORMATION THAT IS PROPRIETARY TO MOLEX INCORPORATED AND SHOULD NOT BE USED WITHOUT WRITTEN PERMISSION