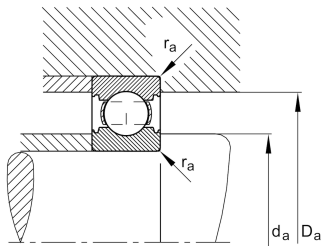
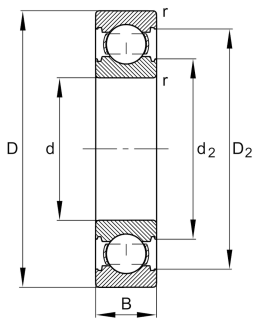


**FAG****6211-C-C3**

Deep groove ball bearing

Deep groove ball bearing 62...-C, single row,
Generation C, steel sheet metal cage

Technical information



Your current product variant

Changed internal design	C	GenerationC
Sealing	Without	Not sealed
Cage	JN	Steel sheet metal
Tolerance class	P6	Class6 (P6), better than PN
Dimensional / heat stabilization	S0	Rings dimensional stabilized up to 150°
Lubricant	Without	Bearing not greased
Radial internal clearance	C3 (Group 3)	Internal clearance larger than CN
Bore type	Z	Cylindrical

Main Dimensions & Performance Data

d	55 mm	Bore diameter
D	100 mm	Outside diameter
B	21 mm	Width
C _r	50,000 N	Basic dynamic load rating, radial
C _{0r}	29,000 N	Basic static load rating, radial
C _{ur}	2,020 N	Fatigue load limit, radial
n _G	10,400 1/min	Limiting speed
n _{gr}	8,300 1/min	Reference speed
≈m	0.565 kg	Weight



Mounting dimensions

d a min	64 mm	Minimum diameter shaft shoulder
D a max	91 mm	Maximum diameter of housing shoulder
r a max	1.5 mm	Maximum fillet radius

Dimensions

r min	1.5 mm	Minimum chamfer dimension
D 1	86.95 mm	Shoulder diameter outer ring
D 2	89.72 mm	Caliber diameter outer ring
d 1	68.62 mm	Shoulder diameter inner ring
d 2	66.69 mm	Caliber diameter inner ring

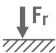

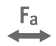



Temperature range

T min	-30 °C	Operating temperature min.
T max	150 °C	Operating temperature max.

Calculation factors

f 0	14.2	Calculation factor
-----	------	--------------------

Characteristics

	Radial load
	Axial load in one direction
	Axial load in two directions
	Grease Lubrication
	Oil Lubrication
	Not sealed