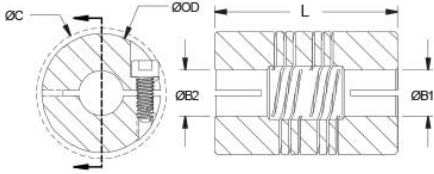




ROCMD51-24-21-AN

Ruland ROCMD51-24-21-AN, 24mm x 21mm Six Beam Coupling, Aluminum, Clamp Style, 50.0mm OD, 76.0mm Length



Description

Ruland ROCMD51-24-21-AN is a six beam coupling with 24mm x 21mm bores, 50.0mm OD, and 76.0mm length. It is machined from a single piece of material and features two sets of three spiral cuts. This D-series beam coupling has more space between each beam for increased misalignment when compared to F- and B-series six beam couplings. It has a reference mark on the outer diameter to identify the larger bore. All hardware is metric and tests beyond DIN 912 12.9 standards for maximum torque capabilities. ROCMD51-24-21-AN is made from 7075 aluminum for lightweight and low inertia. It is machined from bar stock that is sourced exclusively from North American mills and RoHS3, REACH, and Conflict Minerals compliant. ROCMD51-24-21-AN is manufactured in our Marlborough, MA factory under strict controls using proprietary processes.

Product Specifications

Bore (B1)	24 mm	Small Bore (B2)	21 mm
B1 Max Shaft Penetration	37.0 mm	B2 Max Shaft Penetration	37.0 mm
Outer Diameter (OD)	2.000 in (50.8 mm)	Bore Tolerance	+0.025 mm / -0.000 mm
Length (L)	3.000 in (76.2 mm)	Clearance Diameter (C) MAX	57.2 mm
Cap Screw	M6	Screw Material	Alloy Steel
Screw Finish	Black Oxide	Seating Torque	16 Nm
Number of Screws	2	Dynamic Torque Reversing	10.15 Nm
Angular Misalignment	6.0°	Dynamic Torque Non-Reversing	5.08 Nm
Parallel Misalignment	1.52 mm	Static Torque	20.3 Nm
Axial Motion	0.76 mm	Torsional Stiffness	Rating Coming Soon
Moment of Inertia	110.630 x10 ⁻⁶ kg-m ²	Maximum Speed	6,000 RPM
Full Bearing Support Required?	Yes	Zero-Backlash?	Yes
Balanced Design	Yes	Recommended Hex Key	Metric Hex Keys
Material Specification	2024-T351 Aluminum Bar	Temperature	-40°F to 225°F (-40°C to 107°C)
Finish Specification	Sulfuric Anodized MIL-A-8625 Type II, Class 2 and ASTM B580 Type B Black Anodize	Manufacturer	Ruland Manufacturing
Country of Origin	USA	Weight (lbs)	0.629900
UPC	63452945506	Tariff Code	8483.60.8000
UNSPC	31163003		
Note 1	Performance ratings are for guidance only. The user must determine suitability for a particular application.		
Note 4	Stainless steel options available upon request.		