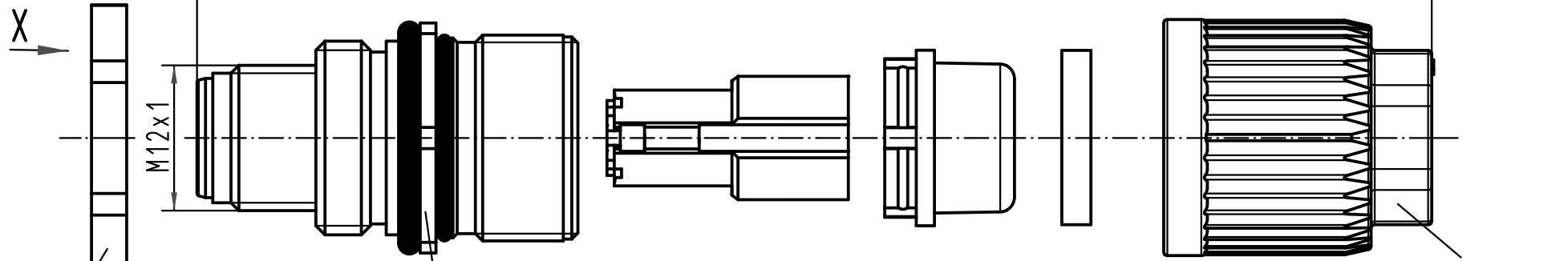


Gesamtlänge im verschraubten Zustand ca. 41,3mm  
 Complete length when assembled app. 41,3mm



SW20/  
width across flats 20

SW19/  
width across flats 19

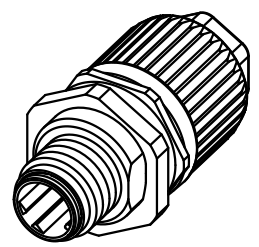
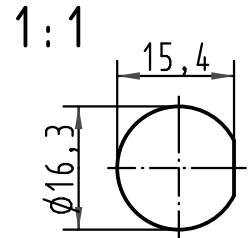
SW13/  
width across flats 13

Montagehilfe wird lose beigelegt/  
assembly aid enclosed



Crimpkontakte separat bestellen  
Order contacts separately

Montageausschnitt/  
panel cut out



Kabelø / Cableø		Leiterø Wire gauge	Bestell-Nr. Part-No.
4,5-5,4mm	7.0-8.8mm	AWG 26-22	61 03 000 0094
Dichtung / Sealing		AWG 22-20	61 03 000 0073
transparent	beige		

ALL Dimensions in mm Original Size DIN A 4			Techn. Character.			Nicht tolerierte Maßel Free size tolerances		
			Dat.	Name	Maßstab/Scale <b>2:1</b>	<b>Wanddurchführung M12 crimp</b> <b>Panel feed through M12 crimp</b> 4polig Stift D-kodiert geschirmt 4poles male D-coded shielded		
			Detail.	Ho				
			Insp.	Bei				
			Stand.					
414337	17.06.09	DY	HARTING Electronics GmbH & Co. KG			<b>TB 21 03 882 1425</b>		
414099			D-32339 ESPELKAMP					
Mod.	Dat.	Name				Sub.		