

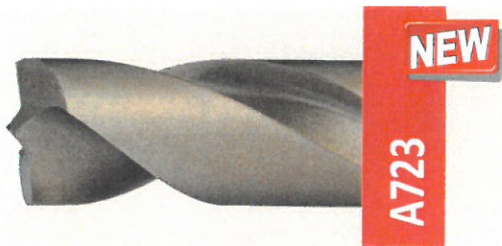
## INTRODUCTION

Dormer's Spot Weld drills are a range of cobalt drills specifically designed for drilling out spot welds to release steel panels and sheets. They are available in a number of standard sizes to suit common spot welds found in the automotive and trailer repair industry. Manufactured from a premium substrate and to high quality standard to deliver consistent reliable performance.

## MATERIAL

Premium High Speed Cobalt (HSS-E)

- Manufactured from M42 to provide high hot hardness
- Retains a **sharp cutting edge under extreme conditions**
- Bronze surface finish identifies cobalt material



## GEOMETRY

Special Lip and Spur Point

- Provides positive centering
- Sharp outer-corners cut the softer material around the spot weld

Strong Web

- Provides strength for **improved penetration in tough conditions**

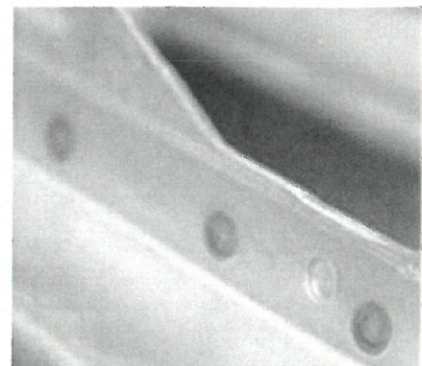
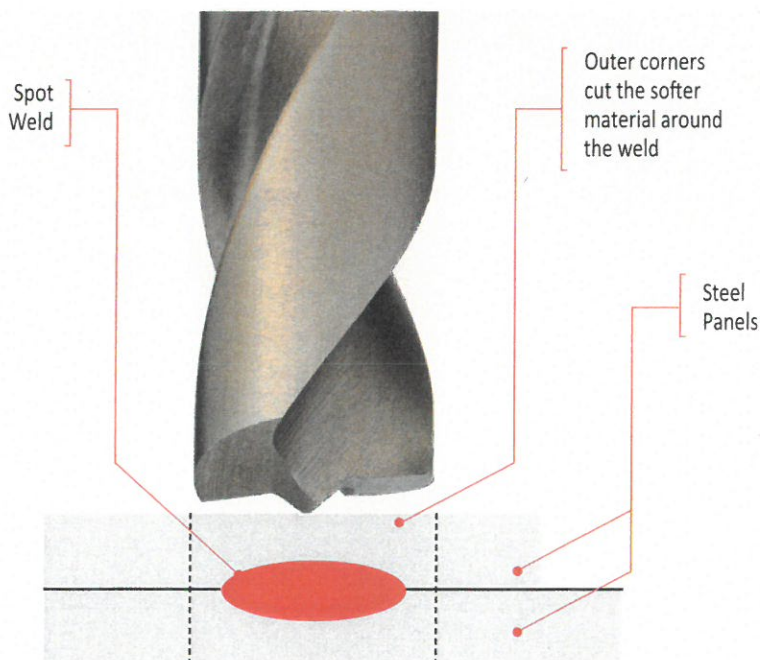
Short Flute

- Provides **rigidity for hand held drilling** of thin panels and sheet

No Body Clearance

- Increases stability during drilling and breakthrough to give a **superior quality hole**

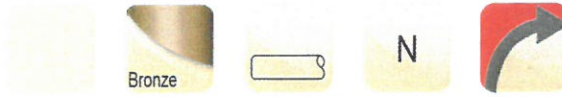
## APPLICATION EXAMPLE



## A723 • Spot Weld Drill

- A723 ■ 1.1 1.2
- 1.3 1.4

A723 HSS-E DORMER 1XD



A723



6.00 - 8.00

A723

$d_1$ $\varnothing h_8$ mm	$d_1$ decimal Inch	$l_2$ mm	$l_1$ mm
6.00	0.2362	18	66
6.00	0.2362	18	93
8.00	0.3150	24	79
8.00	0.3150	24	117

- A7236.0X66
- A7236.0X93
- A7238.0X79
- A7238.0X117