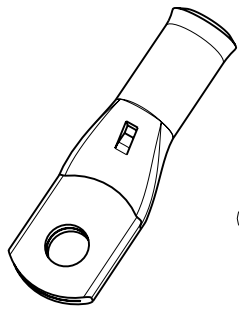
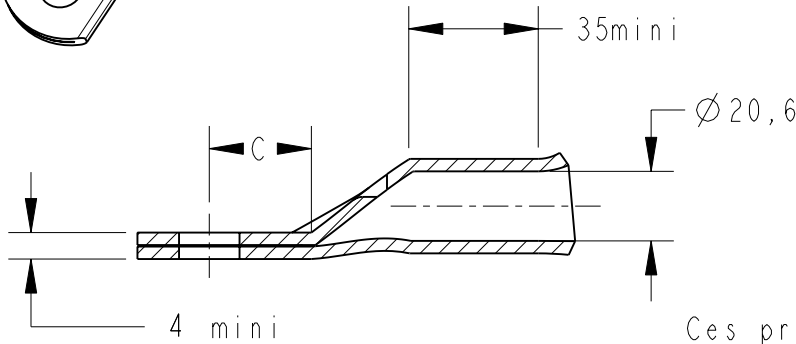


| LOC | DIST | REVISIONS | | | | |
|-----|---------|---------------------------|---------------------------|------------|-----------|--|
| P | LTR REV | DESCRIPTION MODIFICATIONS | DATE | DWN DESS. | APVD APP. | |
| FH | 00 | D | AJOUT XCT 240-12 | 17-Juin-08 | FM GP | |
| | | E | MISE A JOURS / AJOUT NOTA | 07DEC2009 | BG GP | |
| | | | | | | |



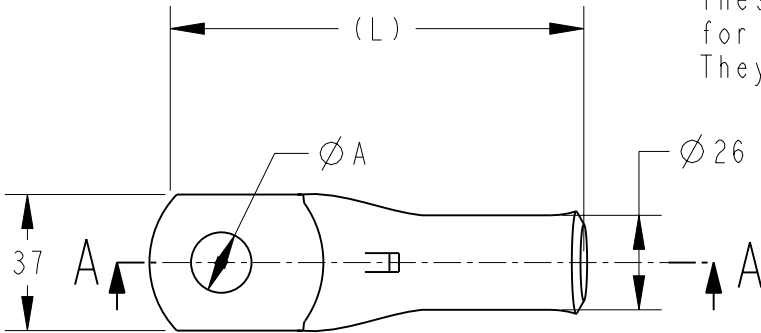
COUPE A-A



Inspection hole



Ces produits ne sont pas prévus pour une utilisation automobile. ils répondent à la norme NFC 20-130
 These products are not intended for use in the car industry. They meet the standard NFC 20-130



| (L) | C | ØA | DESCRIPTION | PART NUMBER |
|------|------|------|-------------|-------------|
| 98.5 | 19.3 | 12.8 | XCT 240-12 | 1-0709523-1 |
| 98,5 | 19,3 | 14,5 | XCT 240-14 | 709823-3 |
| 98,5 | 19,3 | 16,5 | XCT 240-16 | 709823-4 |
| 98,5 | 19,3 | 21 | XCT 240-20 | 709823-5 |

- 1 - MATERIAL = TINNED COPPER
- 2 - Marking in depth: logo-section-hole-Made in France +
- 3 - CABLE SECTION = 450 MCM or 240 mm²
- 4 - GROOVE E240Cu OR DIE (Punch 17PC240+ Die 17M240)

20

RELEASED FOR PUBLICATION
 LIBRE A LA DIFFUSION

BY TYCO ELECTRONICS CORPORATION ALL INTERNATIONAL RIGHTS RESERVED.
 © COPYRIGHT 20

THIS DRAWING IS UNPUBLISHED.
 DIFFUSION RESTREINTE

| | | | | | | | |
|---|--|---------------------------------------|---------|-------------------------------|--------|--|----------------------------|
| DIMENSIONS: mm | | DWN/DESSINE D. LEGUY | 15DEC00 | MATERIAL MATIERE | CUIVRE | TOLERANCES UNLESS OTHERWISE SPECIFIED TOLERANCES NON SPECIFIEES: | - |
| TOLERANCES UNLESS OTHERWISE SPECIFIED: TOLERANCES NON SPECIFIEES (SUIV NB DE DECIMALES): 0 PLC/DEC: ±0 1 PLC/DEC: ±0 2 PLC/DEC: ±0 3 PLC/DEC: ±0 4 PLC/DEC: ±0 ANGLES ±- | | CHK/VERIFIE L. MAINIER | - | SIMEL PRODUCTS | | FINISH FINITION | ETAME |
| | | APVD/APPROUVE G. PORCHERAY | - | | | NAME TITRE | XCT 240-.. |
| | | PRODUCT SPEC SPEC. PRODUIT | - | SIZE FORMAT | A4 | DRAWING NO No PLAN | RESTRICTED TO RESERVE A |
| | | APPLICATION SPEC SPEC. APPLICATION | - | CAGE CODE | 00779 | © | 709823 |
| WEIGHT MASSE APPROX. | | - | g | CUSTOMER DRAWING /PLAN CLIENT | | UNIQUEMENT POUR REFERENCE | SCALE ECHELLE - / - |
| | | | | SHEET FEUILLE | 1 | OF DE | 1 |
| | | | | REV | E | | |