

Revisions

ISS	Symbol	Description	Date
B		CHE for New Drawing Frame & New PN System	2008/04/11
B-1		CHE for Item 3 Dimension : from $\phi 11$ to $\phi 12$	2012/03/02
B-2		Add HT 3011 Die Set View on Drawing	2012/03/27

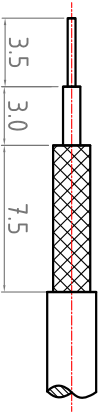
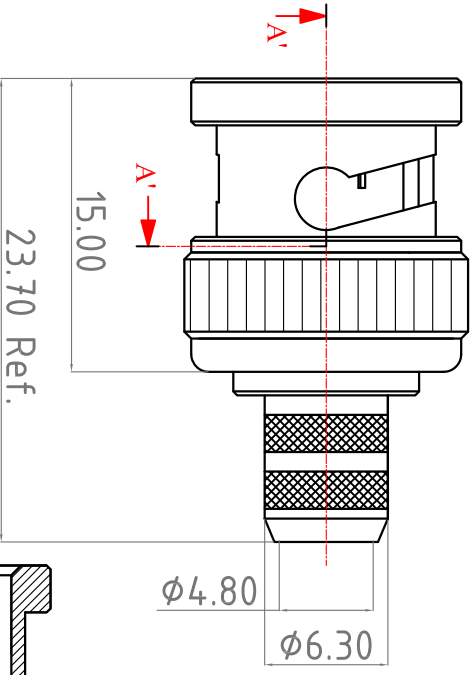
Outline Drawing

Note :

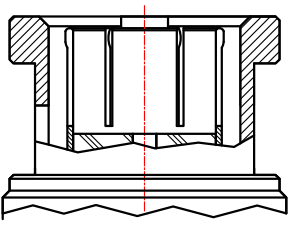
1. Single Crimp: Providing recommended dimensions for ferrule.
2. Dual Crimp: Providing recommended dimensions for ferrule and center pin. Please advise Single/Dual in advance to avoid any inconvenience.
3. All metal material is in compliance with RoHS Directive 2002/95/EC Annex 4 (1) Section 6 paragraph.
3. Recommended Crimped Hand Tool : for Ferrule P/N - **HT-3011**



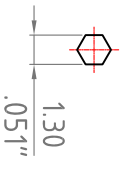
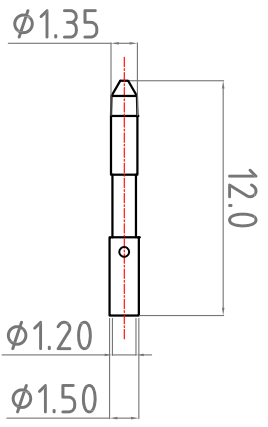
Van Damme code 339-875-300
RS code 7682179



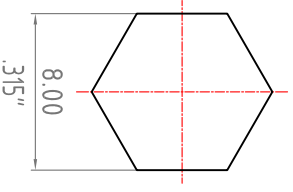
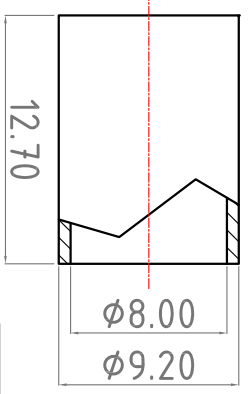
Recommended Cable Stripping Dimensions



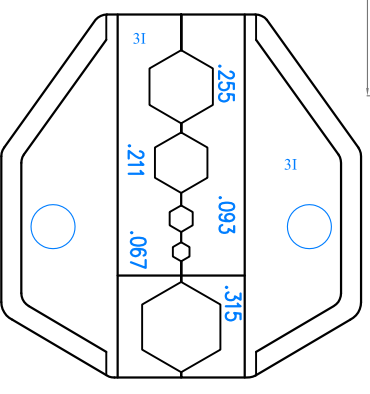
Section A'-A' 75 ohm



Recommended Crimped Dimensions for Center Pin



Recommended Crimped Dimensions for Ferrule



HT-3011 Die Set with 5 Dies
Scale = 1 : 2

ROHS COMPLIANCE