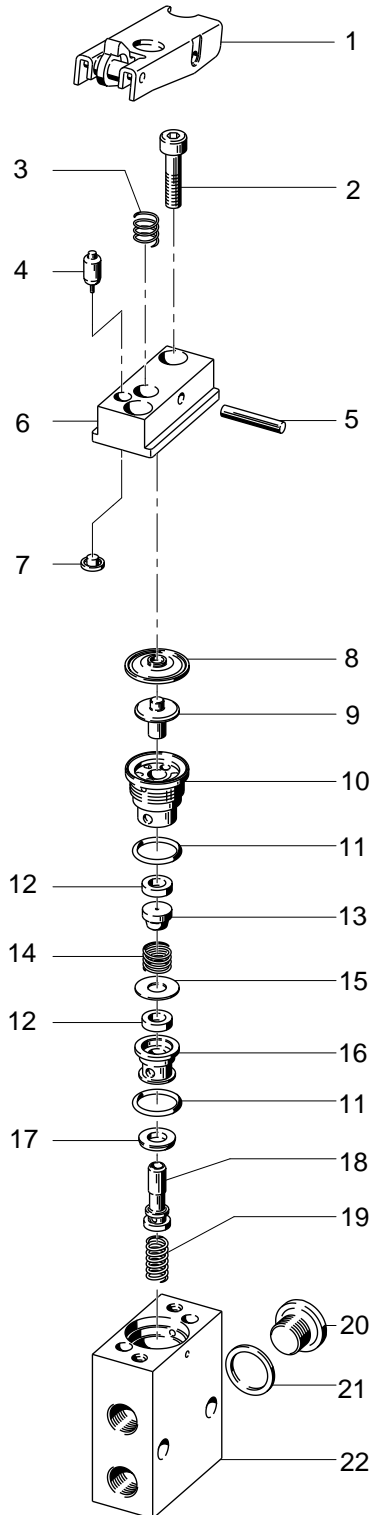


2186 LS-3-1/8 Toggle lever valve - Series: All



2186 LS-3-1/8 Toggle lever valve - Series: All

Pos.	Part no.	Type	Note	Qty.	Unit
A	104222	VL/O-,RS-VS-3-1/8 Set of wearing parts	Spare parts: 7, 8, 9, 11, 12, 13	1	PC
1	100371	LS -3-1/8 VOLLST. Rocker cam lever	Position available until max. 12/31/2028!	1	PC
2	200663	ISO 4762-M4X12-8.8 Socket head screw		2	PC
3	201254	V-1213:KEG Compression spring		1	PC
4	100099	V-012-02 VOLLST. Switch bolt		1	PC
5	207694	3X17,8 EL-318 Grooved pin		1	PC
6	352549	RS -3-1/8 Top part		1	PC
7	337336	RS -3-1/8 Diaphragm	Lubricate with 684474 LUB-KC1 during assembly	1	PC
8	201256	RS-3-1/8 Diaphragm	Lubricate with 684474 LUB-KC1 during assembly	1	PC
9		VS -3-1/8 Plunger	Not available separately, see position A Lubricate with 684474 LUB-KC1 during assembly	1	PC
10		V -1205 Screwed Insert	Not available	1	PC
11		B-8,9X1,25-N-NBR75 O-ring ISO3601	Not available separately, see position A Lubricate with 684474 LUB-KC1 during assembly	2	PC
12		4008 Q 3 Quad ring	Not available separately, see position A Lubricate with 684474 LUB-KC1 during assembly	2	PC
13		VS-3-1/8 Seal	Not available separately, see position A Lubricate with 684474 LUB-KC1 during assembly	1	PC
14		LS-3-1/8 Compression spring	Not available	1	PC
15		V-1104 Disc	Not available	1	PC
16		V-1103 Insert	Not available	1	PC
17		V-1106 Sealing ring	Not available	1	PC
18		V -1102 Pipe	Not available	1	PC
19		RS-3-1/8 Compression spring	Not available	1	PC
20		DIN 908-G1/8-ST Plug screw	Not available	1	PC
21		O-1/8 Sealing ring	Not available	1	PC
22		RS-3-1/8 Housing	Not available	1	PC