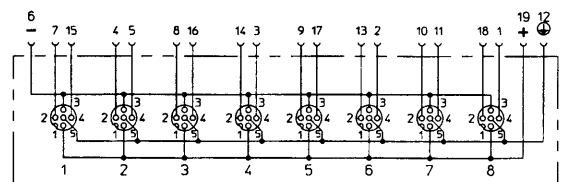
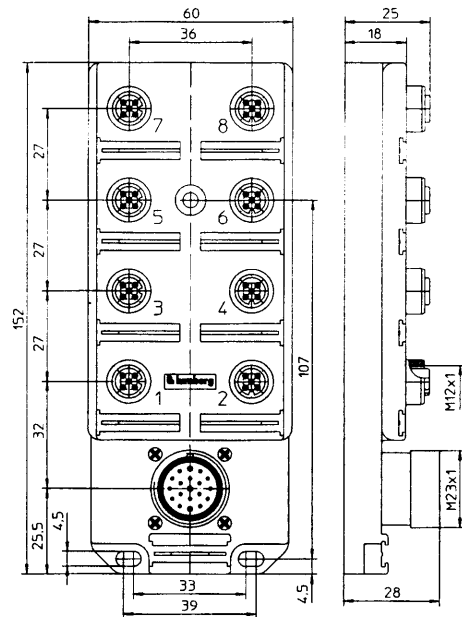
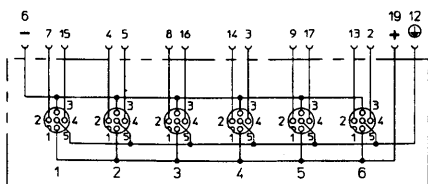
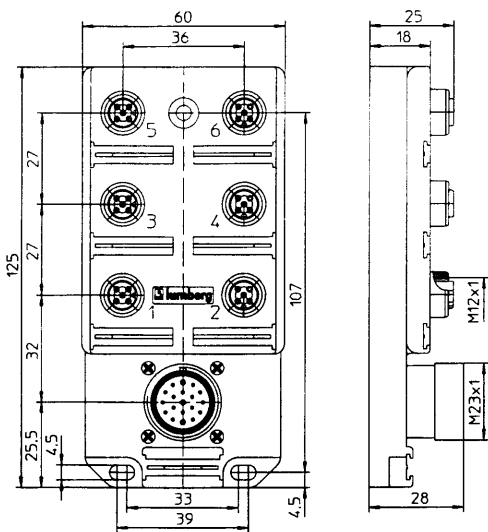
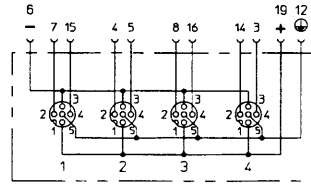
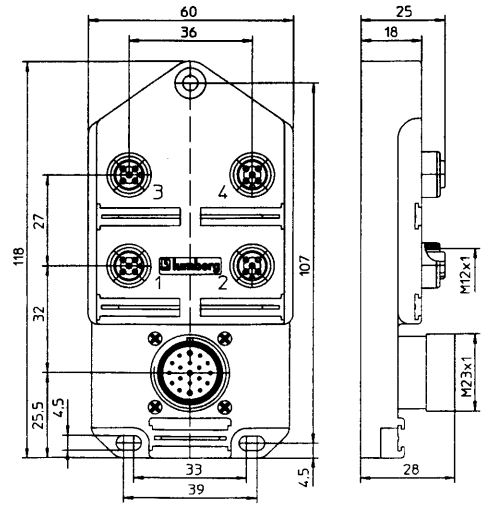
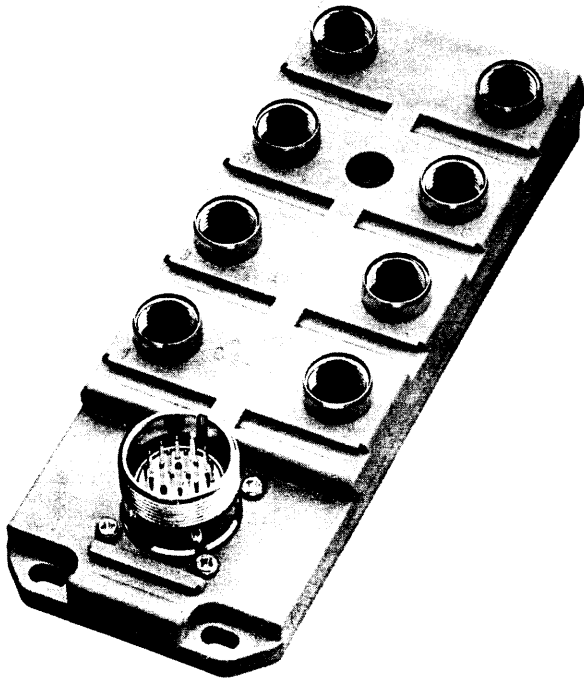


Anschlußfertige "ASB" Aktor-Sensor-Boxen, IP 67
 Ready to connect interface boxes "ASB-action/sensor", IP 67
 Boîtier pour détecteurs/actionneurs "ASB" prêt aux branchements, IP 67

4 + PE



4 + PE

Anschlußfertige "ASB" Aktor-Sensor-Boxen, IP 67
 Ready to connect interface boxes "ASB-action/sensor", IP 67
 Boîtier pour détecteurs/actionneurs "ASB" prêt aux branchements, IP 67


ASBSV... 5...**Steckbare „ASB“ Aktor-Sensor-Box (4 - 8 fach),****5polig, 2 Signale pro Buchse, Schutzleiteranschluß, mit 2 Schutzkappen und 10 Beschriftungsschildern**

Quick connect interface box "ASB-action/sensor" (4 - 8 ways),

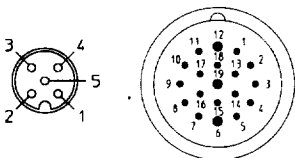
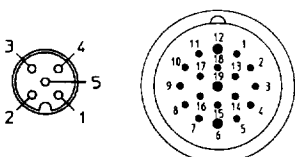
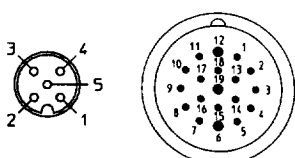
5 poles, earth connection, with two dust covers and ten attachable molds

Boîtier pour détecteur/actionneur „ASB“ totalement connectable (4 - 8 raccords),

5 pôles, raccordement de la terre, avec deux capuchons et dix étiquettes informatives


 in Vorbereitung / UL/CSA under preparation / UL/CSA en cours

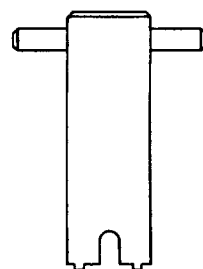
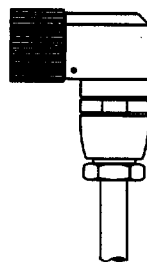
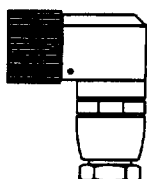
Passende Verbindungskabel siehe Seiten 63 - 79 (WG 06.4) / Suitable connecting cables please see pages 63 - 79 (WG 06.4) /
 Câbles de raccordement adaptés voir s.v.p. les pages 63 - 79 (WG 06.4)

Bestellbezeichnung Part-No. Désignation	Kontaktbelegung Wiring diagram Afféctation des contacts	
ASBSV 4 - 5		1 = 19 (C1) 4 = 1 (15) 2 = 1 (7) 2 (5) 2 (4) 3 (16) 3 (8) 4 (3) 4 (14) 5 = 12 (PE) 3 = 6 (C3)
ASBSV 6 - 5		1 = 19 (C1) 4 = 1 (15) 2 = 1 (7) 2 (5) 2 (4) 3 (16) 3 (8) 4 (3) 4 (14) 5 (17) 5 (9) 6 (2) 6 (13) 5 = 12 (PE) 3 = 6 (C3)
ASBSV 8 - 5		1 = 19 (C1) 4 = 1 (15) 2 = 1 (7) 2 (5) 2 (4) 3 (16) 3 (8) 4 (3) 4 (14) 5 (17) 5 (9) 6 (2) 6 (13) 7 (11) 7 (10) 8 (1) 8 (18) 5 = 12 (PE) 3 = 6 (C3)

Zubehör / Accessories / Accessoires:**ZVK: Schutzkappe für nicht belegte Kupplungsgehäuse / Dust cover for unused sockets / Capuchon pour prises non utilisées****ZBS: Beschriftungsschild / Attachable mold / Etiquette informative**

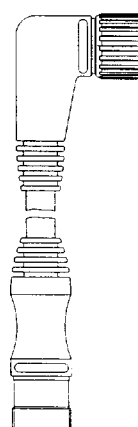
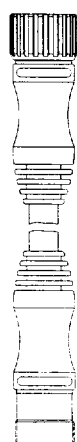
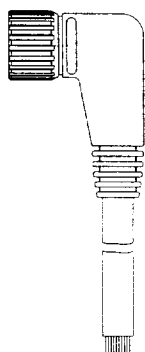
Weitere Details auf den Seiten 91 und 120 • Further details on pages 91 and 120 • D'autres détails pages 91 et 120

CONNECTEURS M23 ET ACCESSOIRES

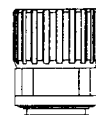


Connecteurs M23

	A SOUDER		CABLES		CLE
	DROIT	COUDE	DROIT	COUDE	
12 broches	RKC 120/13,5	RKCW 120 /13,5	RKC 120-137/...M	RKCW 120-137/...M	ZMS 19..
19 broches	RKC 190/13,5	RKCW 190 /13,5	RKC 190-135/...M	RKCW 190-135/...M	

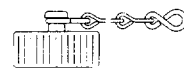


EMBASE FEMELLE A SOUDER
RKF 190



BOUCHON MALE

RSV 190



CONNECTEURS SUMOULES M23 19 BROCHES

MALE DROIT	FEMELLE DROIT	FEMELLE COUDE	MALE FEMELLE DROIT	MALE FEMELLE COUDE	BOUCHON FEMELLE
RS 190-135/...M	RK 190-135/...M	RKW 190-135/...M	RS 190-RK 190-135/...M	RS 190-RKW 190-135/...M	RKV 190

LONGUEUR STANDARD : 5 m, 10 m et 15 m.

COLLIERS



ZKS

ETIQUETTES



ZBS



ZBS PSA

BOUCHONS



ZVK