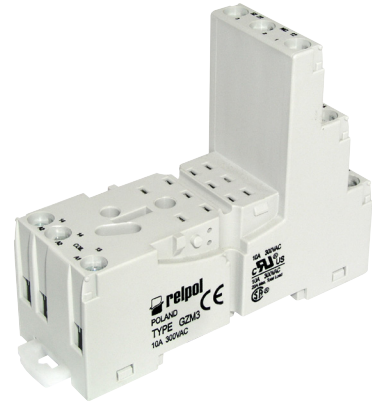


RS Part Number: **8052232**

Europa Part Number: **GZM3-GREY**

Specifications and dimensions

- Socket for R3N relay
- Din rail or surface mount



Features	
Height	75mm
Width	29.5mm
Depth	62mm
Weight	0.048Kg
Standard	EN 60715
Ingress protection	IP20
Contact arrangement	11 pin
Rated voltage	300V AC
Maximum load	10A
Tightening torque	0.7Nm
Related products	
Relay	R3N
Eject/retain clip	GZT4-0040-GREY
6 way commoning bar	ZGGZ4-GREY
Plug in module - diode	M21N-GREY
Plug in module - diode & LED	M41G-GREY
Plug in module - LED	M61G-GREY
Plug in module - LED	M63G-GREY
Plug in module - varistor & LED	M91G-GREY

ⓘ ALL PRODUCTS, PRODUCT SPECIFICATIONS AND DATA ARE SUBJECT TO CHANGE WITHOUT NOTICE.

Information provided in data sheets and/or specifications may vary from actual results in different applications and performance may vary over time. **All products must be installed according to manufacturers instructions.**

Europa House, Airport Way, Luton, Beds, LU2 9NH Tel: 01582 692 440 / Fax: 01582 692 450 e-mail: sales@europacomponents.com
website: <http://www.europacomponents.com>