

# 48 Hook Key Cabinet (With combination lock)



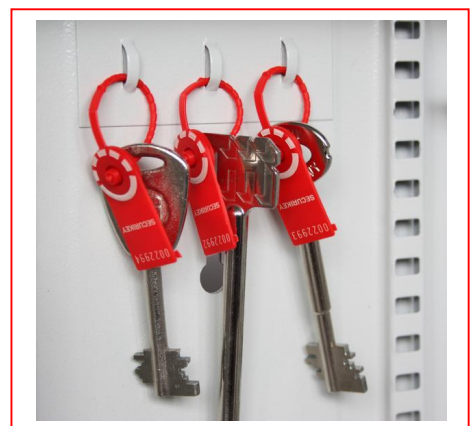
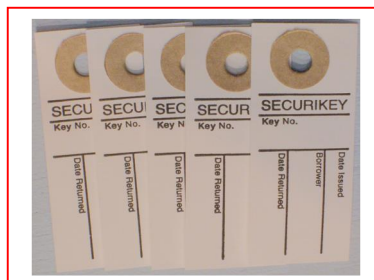
- Loose keys are lost keys - Control them with a key management system
- 1.5mm steel cabinet with flush closing rim to resist forced entry
- Adjustable colour coded and numbered hook bars allow the layout to be customised
- Ingenious key tabs are designed to hang so that the number is always visible
- Key locations can be recorded on the control index which is removable for added security
- Includes 5 security seals and loops to secure keys that require clear evidence of tampering or removal
- Durable Light Grey paint finish will suit most environments
- Supplied with security lock and 2 keys
- Supplied with high security combination lock offering 1 million different codes

	Height	Width	Depth
219784	355mm	300mm	80mm

### Key Cabinet Accessories

**219655** Key Tags . Supplied in bags of 100. 20 of each colour Blue Red, Yellow, Black & Green. (Numbers not included)

**219857** Key Location Cards - An ideal way to control the issue and return of keys. The key user signs a tab which is then hung in place of the borrowed key. A 'spot check' of 'keys out' can be made in seconds. On return of the borrowed key the tab can be filed for future reference



### Security Seals & Loops

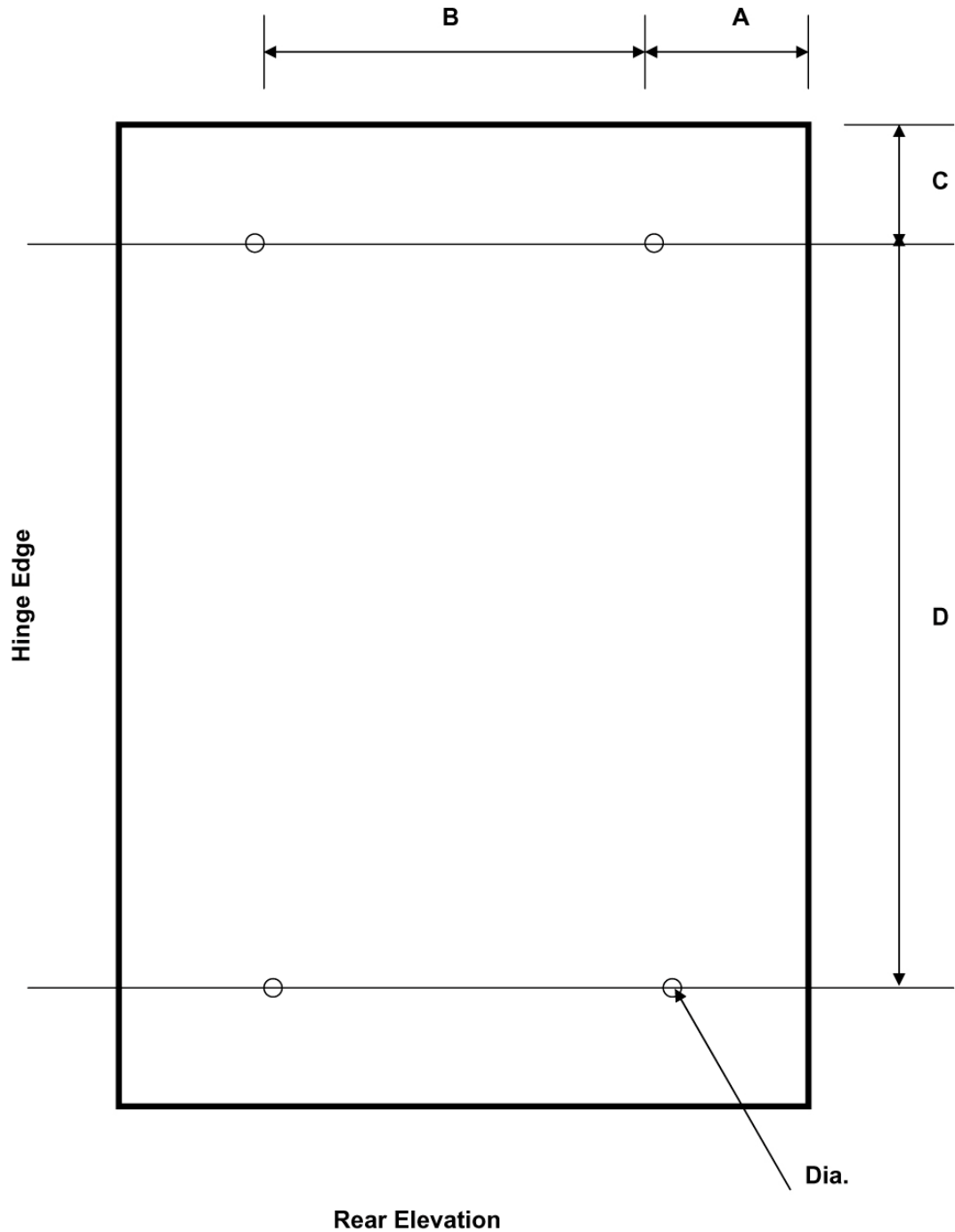
5 uniquely numbered security seals, supplied as standard,

Additional seals available  
Part number 2852875



Key Cabinet Fixing Hole Positions – 4 Hole

Product Code	A (mm)	B (mm)	C (mm)	D (mm)	Dia (mm)
219784	25	253	47	258	5

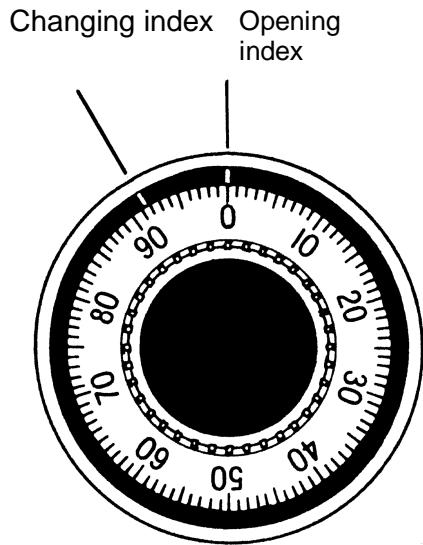


KC 4 Fixing Drg.doc



## Operating and changing instructions

Combination lock: 1985, 3330 and 3332



### General

- Turn the dial always slowly and carefully.
- Place the chosen numbers exactly inline with the Opening- or Changing index.
- The Changing index is always on the left side of the opening index.
- You can stop turning as much as you like. If a number is over flown, start all over again with the first number.
- Choose the last number never between 0 and 10.
- Each number has to be at least 4 increments apart from the other.
- Try the new combination several times to make sure the lock opens and locks perfectly, before locking the door.
- Never force the lock; Turning must always go smoothly, if not ask the technical service to have a lock at it.

**Do not force the lock**

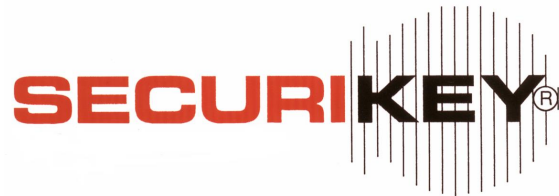
### A. Opening the lock using the opening index:

For example: The lock combination is 10 . 20 . 30

- |    |  |   |
|----|--|---|
| 4x |  | Turn LEFT and pass 10+ (the first number of the combination) three-times and stop exactly on the Opening index. |
| 3x |  | Turn RIGHT and pass 20+ (the second number of the combination) twice and stop exactly on the Opening index.     |
| 2x |  | Turn LEFT and pass 30+ (the third number of the combination) once and stop exactly on the Opening index.        |
|    |  | Turn RIGHT until stop, and the lock is open. The dial stops between 90-0 on the Opening index.                  |

### B. To lock the combination lock:

Turn at least four complete turns LEFT.



**C. Changing instructions:** (Use Changing index)

To change the combination, you will need access to the existing combination and a La Gard Locks change key.

Open the lock and door. With the bolt fully retracted (lock open), before changing combinations, verify that the dial stops between 90 and 0 on the Opening index.

Dial the existing code using the CHANGING INDEX, for example 10-20-30.

4x Turn LEFT and pass %10+three-times and stop exactly on the Changing index.

3x Turn RIGHT and pass %20+twice and stop exactly on the Changing index.

2x Turn LEFT and pass %30+once and stop exactly on the Changing index.

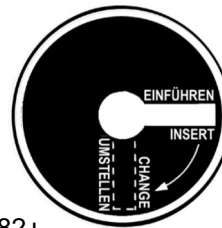
Insert the change key in the keyhole in the back of the door and turn to the RIGHT until stop.

Do not force the change key


If the key will not go in far enough . it will not turn.


Remove the key and dial again the old code on the CHANGING INDEX, stopping exactly on each number.


Select a NEW COMBINATION (CODE) as example: %17-8-82+



**Last number must be higher than 10.**

**4x**  Turn LEFT, pass first number %17+three-times and stop exactly on the Changing index the fourth time.

**3x**  Turn RIGHT, pass second number %8+twice and stop exactly on the Changing index the third time.

**2x**  Turn LEFT, pass third number %82+ once and stop exactly on the Changing index the second time.

If a number is over flown, start on the beginning, using the Changing index.

Turn change key LEFT and remove the key. The new code is inserted.

**Try the new combination several times to make sure the lock opens and locks perfectly, before locking the door.**

ATTENTION! For security reasons, never select a code from personal data (birthday, telephone number, et cetera). Each number has to be at least 4 increments apart from the others. For example: 49. 45-41 and not 51. 52. 53.