



Connectors > Contacts > Connector Contacts



Contact Type: **Socket**

Contact Size: **Size 20**

Wire Size: **.5 mm²**

Termination Method to Wire & Cable: **Crimp**

Features

Contact Features

| | |
|------------------------------|---------|
| Contact Type | Socket |
| Contact Size | Size 20 |
| Contact Current Rating (Max) | 7.5 A |

Termination Features

| | |
|------------------------------------|-------|
| Termination Method to Wire & Cable | Crimp |
|------------------------------------|-------|

Dimensions

| | |
|-----------|--------------------|
| Wire Size | .5 mm ² |
|-----------|--------------------|

Product Compliance

[For compliance documentation, visit the product page on TE.com>](#)

| | |
|---|---|
| EU RoHS Directive 2011/65/EU | Compliant |
| EU ELV Directive 2000/53/EC | Not Yet Reviewed |
| China RoHS 2 Directive MIIT Order No 32, 2016 | No Restricted Materials Above Threshold |
| EU REACH Regulation (EC) No. 1907/2006 | Current ECHA Candidate List: JAN 2025 (247) Candidate List Declared Against: JUNE 2024 (241) SVHC > Threshold: Pb (.7% in Contact Lead-Copper Alloy) Article Safe Usage Statements: Do not eat, drink or smoke when using this product. Wash thoroughly after handling. Recycle if possible and dispose of the article by following all applicable governmental regulations relevant to your geographic location. |
| Halogen Content | Low Halogen - Br, Cl, F, I < 900 ppm per |

homogenous material. Also BFR/CFR/PVC Free

Solder Process Capability

Not reviewed for solder process capability

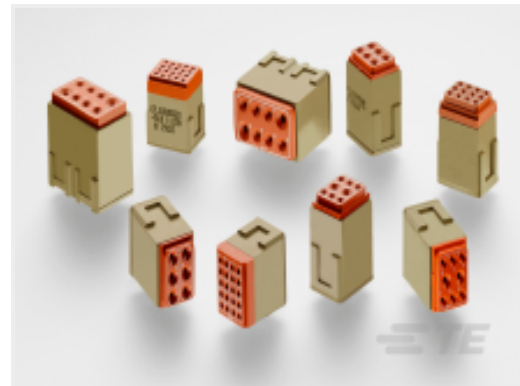
Product Compliance Disclaimer

This information is provided based on reasonable inquiry of our suppliers and represents our current actual knowledge based on the information they provided. This information is subject to change. The part numbers that TE has identified as EU RoHS compliant have a maximum concentration of 0.1% by weight in homogenous materials for lead, hexavalent chromium, mercury, PBB, PBDE, DBP, BBP, DEHP, DIBP, and 0.01% for cadmium, or qualify for an exemption to these limits as defined in the Annexes of Directive 2011/65/EU (RoHS2). Finished electrical and electronic equipment products will be CE marked as required by Directive 2011/65/EU. Components may not be CE marked. Additionally, the part numbers that TE has identified as EU ELV compliant have a maximum concentration of 0.1% by weight in homogenous materials for lead, hexavalent chromium, and mercury, and 0.01% for cadmium, or qualify for an exemption to these limits as defined in the Annexes of Directive 2000/53/EC (ELV). Regarding the REACH Regulation, the information TE provides on SVHC in articles for this part number is based on the latest European Chemicals Agency (ECHA) 'Guidance on requirements for substances in articles' posted at this URL: <https://echa.europa.eu/guidance-documents/guidance-on-reach>

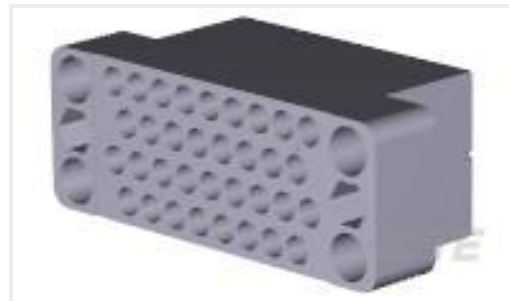
Customers Also Bought



TE Part #176819-000
B-150-11



TE Part #YCTJ112E01EC015000
MODULE ASSY



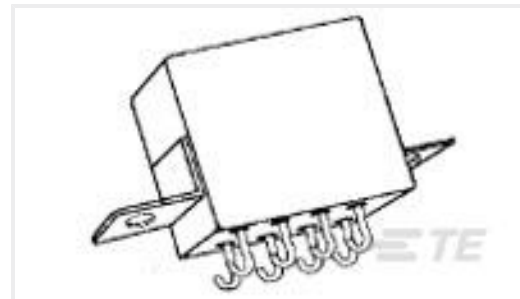
TE Part #200838-2
BLOCK,34 POSN,M SERIES



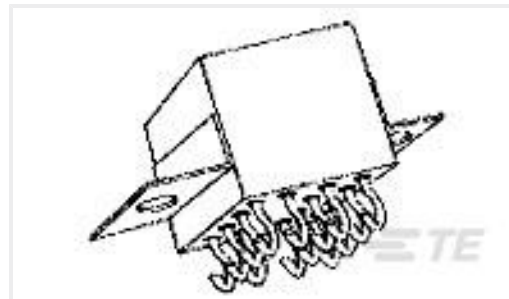
TE Part #201224-7
34 PLACE STRAIN REL. CLAMP



TE Part #203618-1
MALE J.S. ASSY. - SHORT



TE Part #5-1617758-2
FCB-205-0226M=M83536/2-026M



TE Part #6-1617760-7
FCB-405-0521M=M83536/5-021M



TE Part #2-2176349-6
CRGCO 2512 1K2 1%



TE Part #5225395-6
BNC PLUG DUAL CP RG142



TE Part #EM5104-000
55A0811-20-2LL-CS3476

Documents

[Product Drawings](#)

81543-20

Socket Contact, 20 AWG, .5 mm² Wire, Size 20, Crimp



CONT SOC ASSY

English