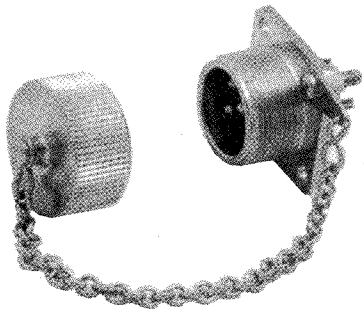


PROTECTIVE ACCESSORIES

PROTECTION CAPS FOR :

RECEPTACLES "all series"



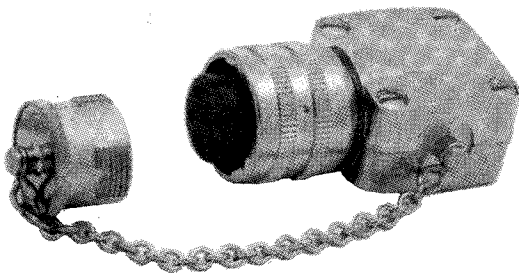
Shell size	Pin and socket insert receptacles	Protection cap part numbers
1	3-4-6 cts	5369 100 06 5368 470 06*
2	4-8-12 cts	5369 110 06 5368 480 06*
3	17 cts	5369 120 06**
4	25 cts	5369 130 06
5	35 et 52 cts	5369 140 06

*Plastic protection caps

**Only for "STANDARD" series

(For "RAPID" series use cap P/N **5368 460 06**)

PLUGS "STANDARD and RAPID Series"



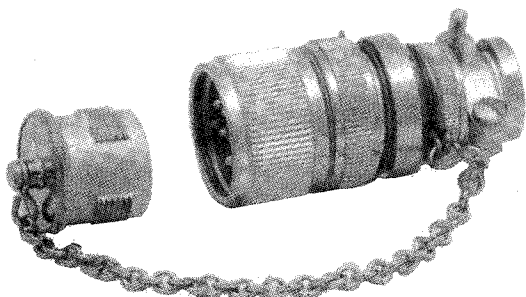
Shell size	Socket insert plugs	Protection cap part numbers
1	3-4-6 cts	5322 600 06
2	4-8-12 cts	5322 780 06
3	17 cts	5322 620 06*
4	25 cts	5322 630 06
5	35 et 52 cts	5322 640 06

Shell size	Pin insert plugs	Protection cap part numbers
1	3-4-6 cts	5322 650 06
2	4-8-12 cts	5322 790 06
3	17 cts	5322 670 06*
4	25 cts	5322 680 06
5	35 et 52 cts	5322 690 06

*Only for "STANDARD" series

(For "RAPID" series use cap P/N **5322 180 06**)

PLUGS "WEATHERPROOF Series" High performance "green plated finish"



Shell size	Socket and pin insert plugs	Protection cap part numbers
1	3-4-6 cts	5322 802 56
2	4-8-12 cts	5322 812 56
3	17 cts	5322 622 56
4	25 cts	-
5	35 et 52 cts	-

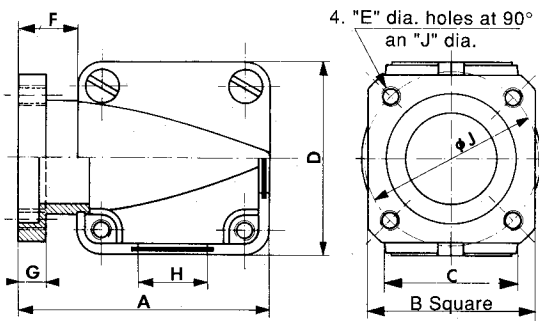
PROTECTIVE ACCESSORIES

BACKSHELLS FOR RECEPTACLES

Available for use with STANDARD and RAPID series receptacles possessing 3-4-6-8-12-17-25-35 and 52 contacts.

PART NUMBERS

Shell size	Number of receptacle contacts	Complete backshell	Accessories			Attaching parts
			Cable-clamp (p. 29)	Ferrule adaptor	Gaskets	Screws I.S.O.
1	3-4-6	5369 350 06	5329 000 06 or 5323 280 06 or 6301 350 06	0425 470 06 or 5329 980 06 or 0429 370 06	5369 450 06	5042 220 06
2	4-8-12	5369 370 06	5329 600 06 or 5323 290 06 or 6301 380 06	5329 550 06	5369 460 06	5042 220 06
3	17	5369 960 06	5329 400 06 or 5323 500 06 or 6301 550 06	0429 400 06 or 0429 430 06	5369 470 06	5042 660 06
4	25	5368 800 06	5329 400 06 or 5323 500 06	0429 400 06 or 0429 430 06	-	5042 660 06
5	35-52	5368 810 06	5323 270 06	-	-	5042 660 06



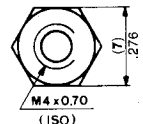
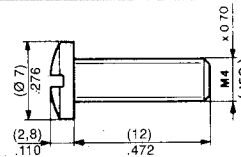
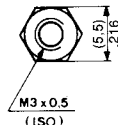
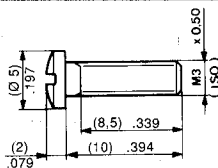
Shell size	Dimensions : (mm) in.								
	A	B	C	D	E	F	G	H	J
1	(40) 1.57	(27) 1.06	(20) .787	(31) 1.22	(Ø3) .118	(9) .354	(5) .197	(11) .433	(28) 1.10
2	(44) 1.73	(32) 1.26	(23) .905	(35) 1.38	(Ø3) .118	(9) .354	(5) .197	(15) .590	(34) 1.37
3	(51) 2.00	(43) 1.69	(30) 1.18	(46) 1.81	(Ø4) .157	(10) .394	(6) .236	(20) .787	(48) 1.88
4	(46) 1.81	(47) 1.85	(28.5) 1.12	(52) 2.05	(Ø4) .157	(10) .394	(6) .236	(20) .787	(54) 2.12
5	(53) 2.09	(54) 2.12	(34) 1.34	(60) 2.36	(Ø4) .157	(10) .394	(6) .236	(27) 1.06	(62) 2.44

FIXING ACCESSORIES FOR RECEPTACLES SCREWS AND NUTS (I.S.O. THREAD)

PART NUMBERS

Note : these components are supplied by quantities of 100 screws or nuts.

Receptacle shell size	Number of contact	Screw (I.S.O.)	Nut (I.S.O.)	Dia. (mm) Dia. in.	Finish
1 and 2 3, 4 and 5	3, 4, 6, 8, 12 17, 25, 35, 52	5042 220 06 5042 660 06	5045 230 06 5045 310 06	(3) .118 (4) .157	Nickel-plated Nickel-plated



ACCESSORIES FOR SECURE CONNECTORS

PART NUMBERS

Shell size	Number of contact			Screw "Kit" * for receptacle	Screw "Kit" * for plug	Dia. hole for the head of screw	Material
	Std. Series	Miniatur. Series	Indust. Series				
1	3-4-6	12-19	3-4-7	5368 100 06	5368 120 06	(1.2 mm) .047 in.	Stainless-steel
2	4-8-12	27-37	12	5368 100 06	5368 130 06	(1.2 mm) .047 in.	Stainless-steel

* To secure mated connectors, use one kit for receptacle + one kit for plug.