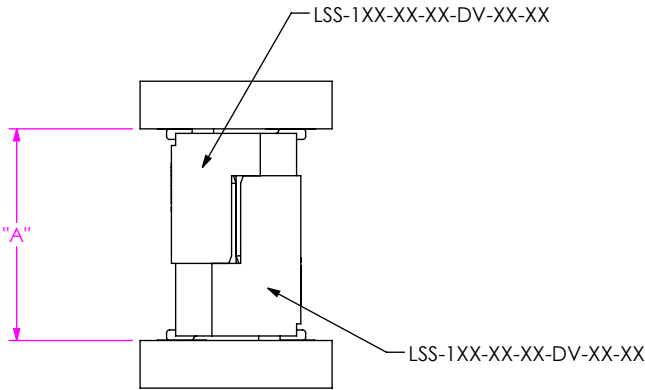


LSS MATED VIEWS

FIG 1
LSS-DV TO LSS-DV



LEAD STYLE	-01		-02		-03		WIPE	
	"A" FULLY MATED	"A" MAX	"A" FULLY MATED	"A" MAX	"A" FULLY MATED	"A" MAX	FULLY MATED	MIN
-01	.236 [6.00]	.284 [7.22]					.063 [1.60]	.015 [0.38]
-02	.354 [9.00]	.402 [10.22]	.472 [12.00]	.520 [13.22]			.063 [1.60]	.015 [0.38]
-03	.276 [7.00]	.324 [8.22]	.394 [10.00]	.442 [11.22]	.315 [8.00]	.363 [9.22]	.063 [1.60]	.015 [0.38]

- NOTES:
- 1. DRAWING ILLUSTRATES EFFECTIVE MATING RANGE OF CONNECTORS IN VARIOUS CONFIGURATIONS
 - 2. ALTHOUGH MAX DIMENSIONS ARE LISTED SAMTEC RECOMMENDS FULLY MATING COMPONENTS.
 - 3. ALL DIMENSIONS BASED ON NOMINAL VALUES FOR SAMTEC RECOMMENDED PCB LAYOUTS.

PROPRIETARY NOTE
THIS DOCUMENT CONTAINS INFORMATION
CONFIDENTIAL AND PROPRIETARY TO
SAMTEC, INC. AND SHALL NOT BE REPRODUCED
OR TRANSFERRED TO OTHER DOCUMENTS OR
DISCLOSED TO OTHERS OR USED FOR ANY
PURPOSE OTHER THAN THAT WHICH IT WAS
OBTAINED WITHOUT THE EXPRESSED WRITTEN
CONSENT OF SAMTEC, INC.

