

115.111.129.98KWVE..-B-HLFührungswagen

Carriages KWVE35-B-HL (Series KWVE..-B-HL)

high, narrow, long carriage, four-row; corrosion-resistant design possible

The datasheet is only an overview of dimensions and basic load ratings of the selected product. Please always observe all the guidelines in these overview pages. Further information is given on many products under the menu item "Description". You can also order comprehensive information via the Catalogue ordering system (https://www.schaeffler.de/content.schaeffler.de/en/news_media/index.jsp) or by telephone on +49 (91 32) 82 - 28 97.

H	55 mm
B	70 mm
L	145 mm
1)	Locating face
2)	Marking
3)	Lubrication nipple with tapered head to DIN 71 412-B M6 is supplied loose
A ₁	18 mm
A ₂	10 mm
A ₃	19,3 mm
A ₄	18 mm
a _L max	71 mm a L and a R are dependent on the length l max of the guideway
a _L min	20 mm a L and a R are dependent on the length l max of the guideway
a _R max	71 mm a L and a R are dependent on the length l max of the guideway
a _R min	20 mm a L and a R are dependent on the length l max of the guideway
b	34 mm Tolerance: -0,005/-0,03
G ₂	M8 For screws to DIN ISO 4762-12.9 Max. tightening torque in Nm: M3 = 2,5 M4 = 5 M5 = 10 M6 = 17 M8 = 41

M10 = 83

M12 = 140

M14 = 220

M16 = 340

If there is a possibility of settling, the fixing screws should be secured against rotation

h 27 mm

H₁ 6,7 mm

h₁ 15 mm

H₅ 6,75 mm

J_B 50 mm

J_L 72 mm

j_L 80 mm

J_{L6} 27,5 mm

K₁ M8 For screws to DIN ISO 4762-12.9

Max. tightening torque in Nm:

M3 = 2,5

M4 = 5

M5 = 10

M6 = 17

M8 = 41

M10 = 83

M12 = 140

M14 = 220

M16 = 340

If there is a possibility of settling, the fixing screws should be secured against rotation

L₁ 113 mm

l_{max} 2960 mm Maximum length of single-piece guideways; longer guideways are supplied in several sections and are marked accordingly.
Maximum single-piece guideway length of 6 m by agreement.

L_S 1,65 mm

N₃ 5,5 mm Maximum permissible screw depth for lubrication connector:
7 mm

N₄ 5,5 mm Maximum permissible screw depth for lubrication connector:
7 mm

S 0,8 mm

T₅ 13,5 mm

W₆ 6 mm Width across flats

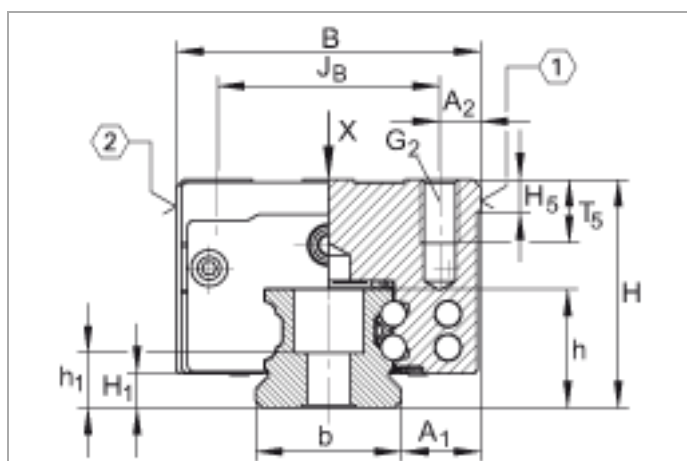
mw 2,4 kg Mass of carriage

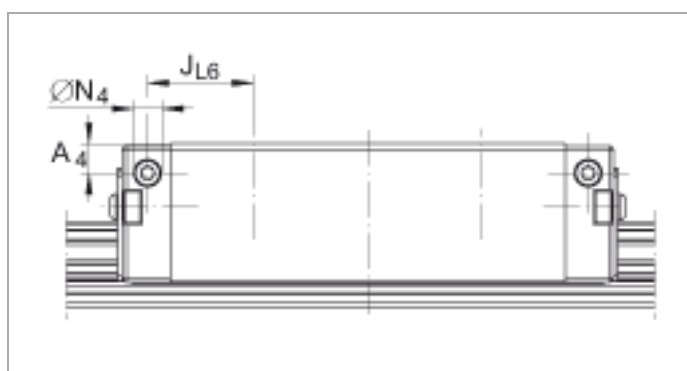
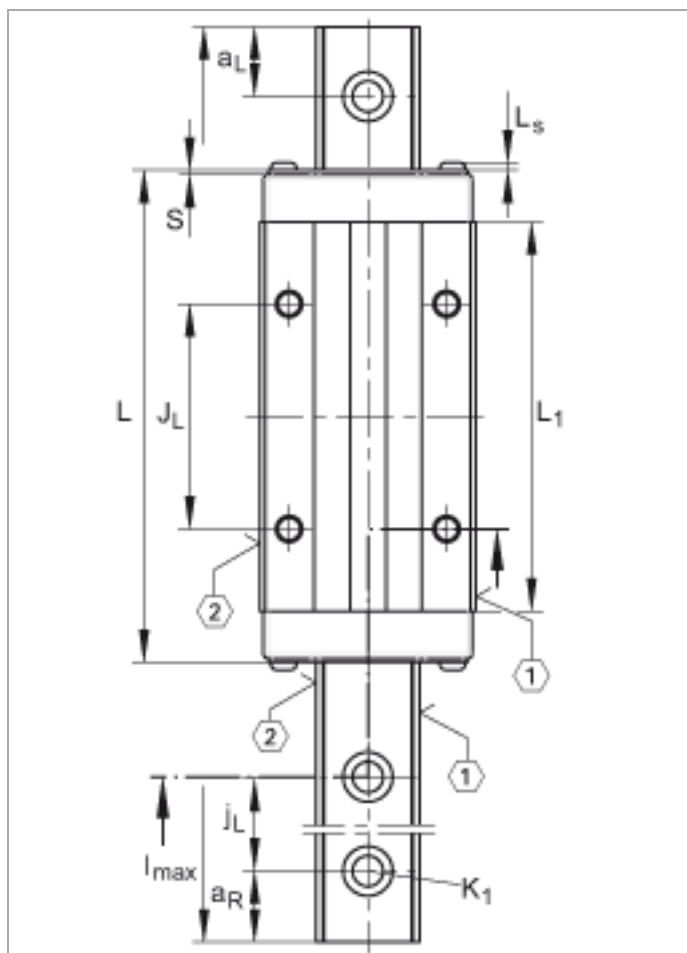
ms 5,7 kg/m Mass of guideway

Calculation of basic load rating according to DIN 636,

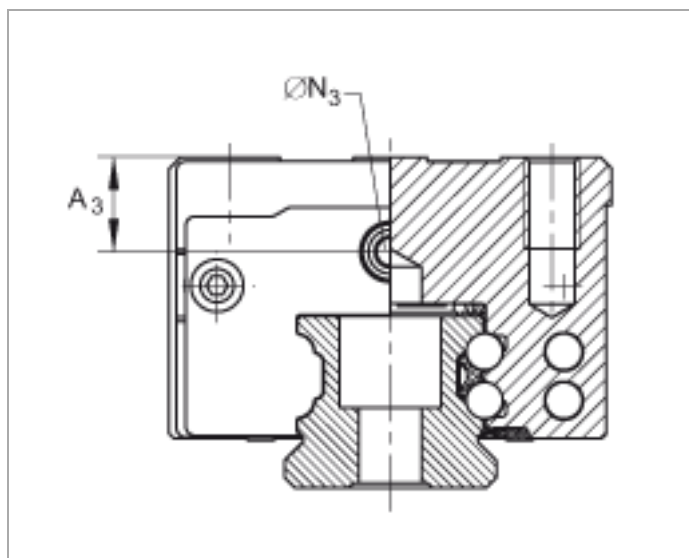
increased basic dynamic load rating possible on the basis of practical experience.

C	47500 N	Basic dynamic load rating
C ₀	100000 N	Basic static load rating
M _{0x}	2025 Nm	Static moment rating about X axis
M _{0y}	1890 Nm	Static moment rating about Y axis
M _{0z}	1890 Nm	Static moment rating about Z axis

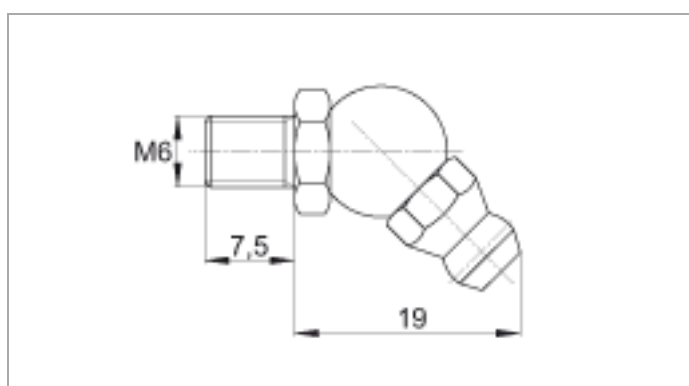




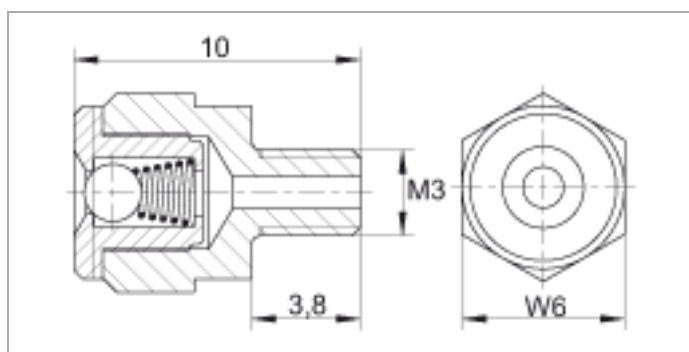
Lubrication connector on lateral face



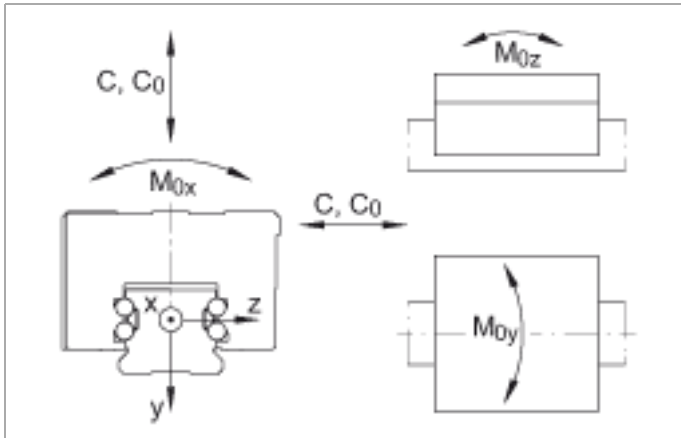
Lubrication connector on end face



Lubrication nipple 3)



Lubrication nipple 3)



Load directions