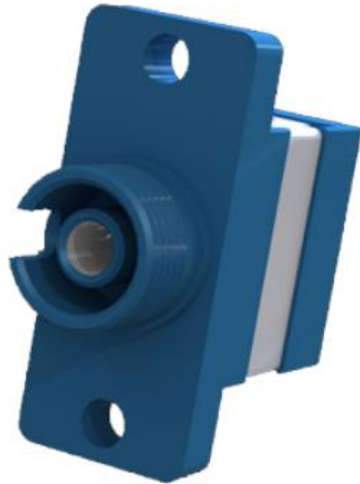


Datasheet

Hybrid Adaptors

RS Stock number [536-7645](#)



Description:

Hybrid adaptors are used for mating 2 different style connectors. Our hybrid adaptors conform to international standards, are quality tested, and are available in singlemode, multimode and many different connector-type configurations.

Specifications:

	Ceramic	Phosphor Bronze	Conformance
Insertion Loss (typ)	0.1dB	0.15dB	IEC 61300-3-4
Mating Durability	500	500	IEC 61300-2-2
Receptacle retention force	2N-5.9N	2N-5.9N	IEC 61754-13
Operating Temperature	-25 to +70, cycles	-25 to +70, cycles	IEC 61300-2-22



Features:

- Complies with IEC, TIA/EIA, Telcordia standards
- High precision alignment sleeve
- Low insertion loss and high reconnectability
- REACH SvHC compliant
- Materials compliant to RoHS2
- Available in plastic or metal body

Applications:

- Telecommunications networks
- Local area networks
- Data processing networks
- Cable television
- Premises distribution
- Test and laboratory equipment
- Industrial and military application