

TE Internal #: 1050776-1
SMA Connector, Plug, 50 ohm, Threaded, 18 GHz, 1 Position, Wire & Cable, Cable Mount (Free-Hanging), -65 – 165 °C [-85 – 329 °F], Solder, SMA

[View on TE.com >](#)



Connectors > RF Connectors > Coax Connectors



RF Interface: **SMA**
RF Connector Style: **Plug**
RF Connector Mated Outer Diameter (Approximate): **8.99 mm [.354 in]**
Impedance: **50 Ω**
Compatible With RF Cable Type: **RG 402 Semi-Rigid**

Features

Product Type Features

| | |
|-----------------------------------|--------------------|
| Connector Seal & Plug Type | Interfacial Seal |
| Connector Product Type | Connector Assembly |
| RF Interface | SMA |
| RF Connector Style | Plug |
| Compatible With RF Cable Type | RG 402 Semi-Rigid |
| Connector & Contact Terminates To | Wire & Cable |

Configuration Features

| | |
|----------------------------|---|
| Number of Positions | 1 |
| Number of Coaxial Contacts | 1 |

Electrical Characteristics

| | |
|-----------|------|
| Impedance | 50 Ω |
|-----------|------|

Body Features

| | |
|-----------------------------|-----------------|
| Cable Connector Orientation | Straight |
| Body Material | Stainless Steel |
| Body Material Finish | Plated |
| Body Plating Material | Gold |

Contact Features

| | |
|---|--------|
| RF Connector Center Contact Underplating Material | Copper |
|---|--------|



| | |
|--|------------------|
| RF Connector Center Contact Plating Material | Gold (Au) |
| RF Connector Center Contact Material | Beryllium Copper |

Termination Features

| | |
|------------------------------------|--------|
| Termination Method to Wire & Cable | Solder |
|------------------------------------|--------|

Mechanical Attachment

| | |
|---------------------------------|----------------------------|
| RF Connector Coupling Mechanism | Threaded |
| Connector Mounting Type | Cable Mount (Free-Hanging) |
| RF Contact Captivation Method | Solder |

Dimensions

| | |
|---|------------------|
| Product Length | 11.18 mm[.44 in] |
| RF Connector Mated Outer Diameter (Approximate) | 8.99 mm[.354 in] |

Usage Conditions

| | |
|-----------------------------|----------------------------|
| Operating Temperature Range | -65 – 165 °C[-85 – 329 °F] |
|-----------------------------|----------------------------|

Operation/Application

| | |
|---------------------|--------|
| Operating Frequency | 18 GHz |
|---------------------|--------|

Packaging Features

| | |
|------------------|---------|
| Packaging Method | Package |
|------------------|---------|

Other

| | |
|-----------------------------|-----------------|
| Grade | Military |
| Coupling Nut Base Material | Stainless Steel |
| Coupling Nut Plating Finish | Passivated |
| Military Category | B |
| Dielectric Material | PTFE |

Product Compliance

For compliance documentation, visit the product page on TE.com>

| | |
|---|--|
| EU RoHS Directive 2011/65/EU | Compliant with Exemptions |
| EU ELV Directive 2000/53/EC | Compliant with Exemptions |
| China RoHS 2 Directive MIIT Order No 32, 2016 | Restricted Materials Above Threshold |
| EU REACH Regulation (EC) No. 1907/2006 | Current ECHA Candidate List: JAN 2025 (247) Candidate List Declared Against: JAN 2025 (247) |



SVHC > Threshold:
Pb (3.7% in 74018819)

Article Safe Usage Statements:
Do not eat, drink or smoke when using this product. Wash thoroughly after handling. Recycle if possible and dispose of the article by following all applicable governmental regulations relevant to your geographic location.

| | |
|-----------------|--|
| Halogen Content | Low Bromine/Chlorine - Br and Cl < 900 ppm per homogenous material. Also BFR /CFR/PVC Free |
|-----------------|--|

| | |
|---------------------------|--|
| Solder Process Capability | Not applicable for solder process capability |
|---------------------------|--|

Product Compliance Disclaimer

This information is provided based on reasonable inquiry of our suppliers and represents our current actual knowledge based on the information they provided. This information is subject to change. The part numbers that TE has identified as EU RoHS compliant have a maximum concentration of 0.1% by weight in homogenous materials for lead, hexavalent chromium, mercury, PBB, PBDE, DBP, BBP, DEHP, DIBP, and 0.01% for cadmium, or qualify for an exemption to these limits as defined in the Annexes of Directive 2011/65/EU (RoHS2). Finished electrical and electronic equipment products will be CE marked as required by Directive 2011/65/EU. Components may not be CE marked. Additionally, the part numbers that TE has identified as EU ELV compliant have a maximum concentration of 0.1% by weight in homogenous materials for lead, hexavalent chromium, and mercury, and 0.01% for cadmium, or qualify for an exemption to these limits as defined in the Annexes of Directive 2000/53/EC (ELV). Regarding the REACH Regulation, the information TE provides on SVHC in articles for this part number is based on the latest European Chemicals Agency (ECHA) ‘Guidance on requirements for substances in articles’ posted at this URL: <https://echa.europa.eu/guidance-documents/guidance-on-reach>

Compatible Parts

TE Part # 1053372-1
2062 8001 90,OSM JACK, QPL

Also in the Series | SMA

Battery Holders(1)

Connector Adapters & Connector Savers(8)

Connector Caps & Covers(3)

Connector Hardware(2)



Connector Strain Relief(1)



RF Cable Assemblies(2)

Customers Also Bought



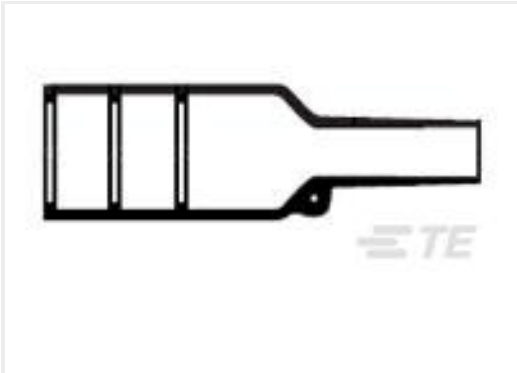
TE Part #2063487-2
SDE TYPE III+ 0.2-2.5mm2 DIE SET



TE Part #1059868-1
4706 7985 02



TE Part #1-102387-2
64 MODIV HSG COMP DR .100 POL



TE Part #419820-000
202K132-3/86-0



TE Part #YDTS26F11-98PAV001
PLUG ASSY



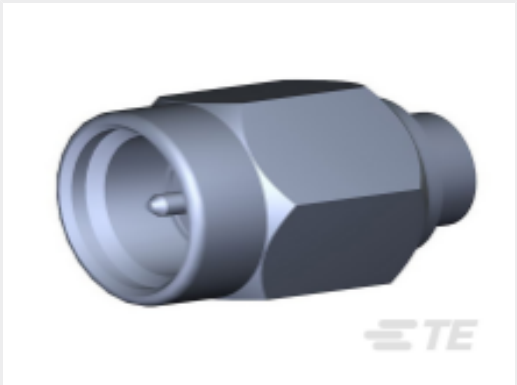
TE Part #3215554002
NTFR-1-3/4-0-SP



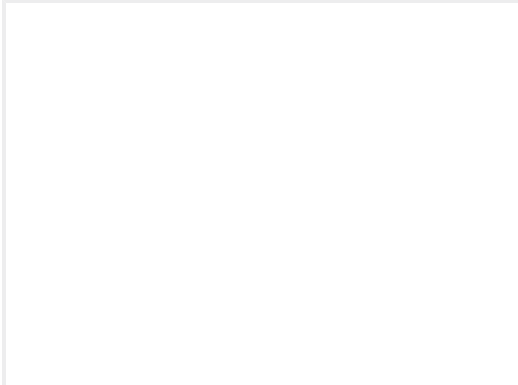
TE Part #2841-5-9000
CONT PIN



TE Part #1057697-1
3106 7941 00



TE Part #1757734-1
2001 5003 02,SMA CABLE PLUG



TE Part #601064N002
D-610-10CS1024

Documents

Product Drawings

2001 8002 92

English

2001 8002 92

English

CAD Files

3D PDF

3D



Customer View Model

[ENG_CVM_CVM_1050776-1_E.2d_dxf.zip](#)

English

Customer View Model

[ENG_CVM_CVM_1050776-1_E.3d_igs.zip](#)

English

Customer View Model

[ENG_CVM_CVM_1050776-1_E.3d_stp.zip](#)

English

By downloading the CAD file I accept and agree to the [Terms and Conditions](#) of use.

Instruction Sheets

[Instruction Sheet \(U.S.\)](#)

English