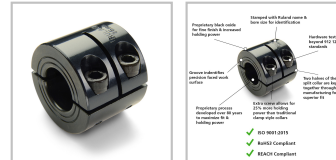
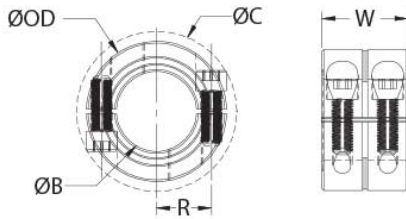




MWSP-20-F

Ruland MWSP-20-F, 20mm Double Wide Shaft Collar, Black Oxide Steel, Two-Piece Clamp Style, 40mm OD, 31.6mm Width




Description

Ruland MWSP-20-F is a two-piece double wide shaft collar with a 20mm bore, 40mm OD, and 31.6mm width. The clamp style design does not mar the shaft, is easy to remove, and is indefinitely adjustable. It is commonly used for guiding, spacing, stopping, mounting, and component alignment. Equipment manufacturers benefit from the tightly controlled face to bore perpendicularity (TIR of ? .05mm). Perpendicularity is critical for alignment when the shaft collar is used as a load bearing face, mechanical stop, or for mounting components such as gears or bearings. Proprietary processes have been developed by Ruland to maintain superior fit, finish, and holding power. MWSP-20-F is stamped with the Ruland name and bore size for ease of identification. This double wide shaft collar has 25% higher axial holding power than a round bore of equivalent size. It can also be used as a short rigid coupling for applications where a traditional rigid coupling is too long. Forged screws test beyond DIN 912 12.9 standards to ensure maximum holding power. Halves are mated throughout the manufacturing process for proper fit and alignment. MWSP-20-F is manufactured from solid bar stock sourced from select North American mills and machined to a fine burr free finish. Ruland uses 1215 lead-free steel with a proprietary black oxide finish that produces a fine glossy finish while increasing holding power and resisting corrosion. MWSP-20-F is RoHS3 and REACH compliant and manufactured in our Marlborough, MA factory under strict controls using proprietary processes.

Product Specifications

Bore (B1)	20 mm	Small Bore (B2)	20 mm
Outer Diameter (OD)	40 mm	Bore Tolerance	+0.050 mm / +0.012 mm
Width (W)	31.6 mm	Width Tolerance	+0.076 mm / -0.254 mm
Clearance Diameter (C) MAX	47.4 mm	Recommended Gap	1.59 mm
Recommended Shaft Tolerance	+0.000 mm / -0.013 mm	Forged Clamp Screw	M6
Screw Material	Alloy Steel	Hex Wrench Size	5.0 mm
Screw Finish	Black Oxide	Seating Torque	16 Nm
Screw Location (R)	14.73 mm	Number of Screws	4 ea
Material Specification	1215 Carbon Steel Bar	Temperature	-40°F to 350°F (-40°C to 176°C)
Finish Specification	Hot Process Black Oxide, Impregnated with Naphthenic Oil, Centrifugally Dried	Manufacturer	Ruland Manufacturing
Country of Origin	USA	Moment of Inertia	5.210 x 10 ⁻⁶ kg-m ²
Weight (lbs)	0.457900	UPC	634529107119
Tariff Code	8483.60.8000	UNSPC	31162811

Note 1 Performance ratings are for guidance only. The user must determine suitability for a particular application.

Prop 65  **WARNING** This product can expose you to the chemical Ethylene Thiourea, known to the State of California to cause cancer and birth defects or other reproductive harm. For more information go to www.P65Warnings.ca.gov.

Installation Instructions

1. Use the MWSP-20-F double wide shaft collar as it is received.
2. Wipe the bore clean.
3. Apply a thin coat of light oil to the shaft.
4. Tighten the screws in two stages, starting with the inside screws. Using a torque wrench with 5 mm bit, tighten the inside screws to 8 Nm which is half the recommended seating torque. Repeat for the outside screws, again tightening to half of the recommended seating torque.
5. On two-piece couplings be sure to maintain the gap between the two halves during installation.
6. Tighten the screws to the full recommended seating torque of 16 Nm following the same pattern,

starting with the inside screws first.
