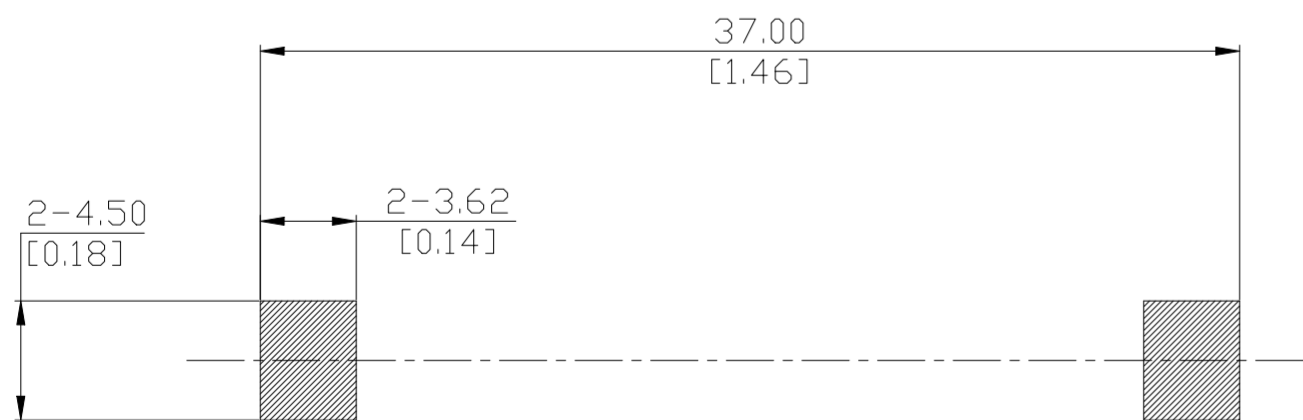
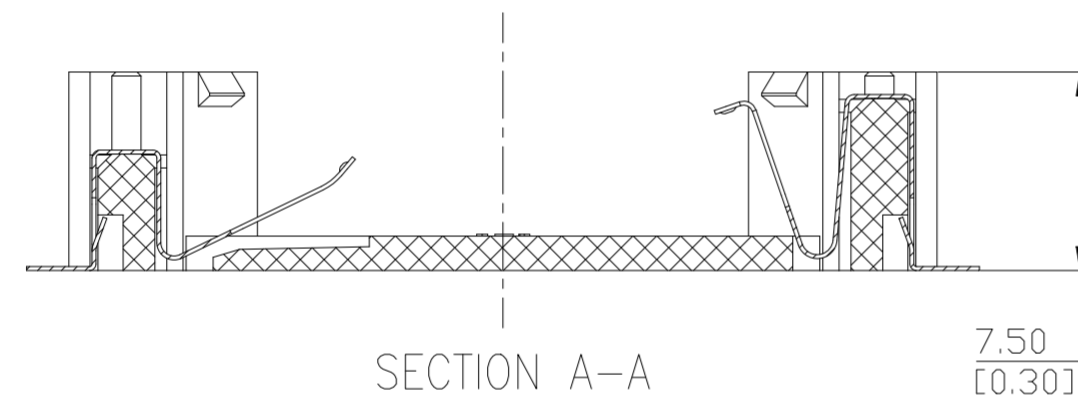
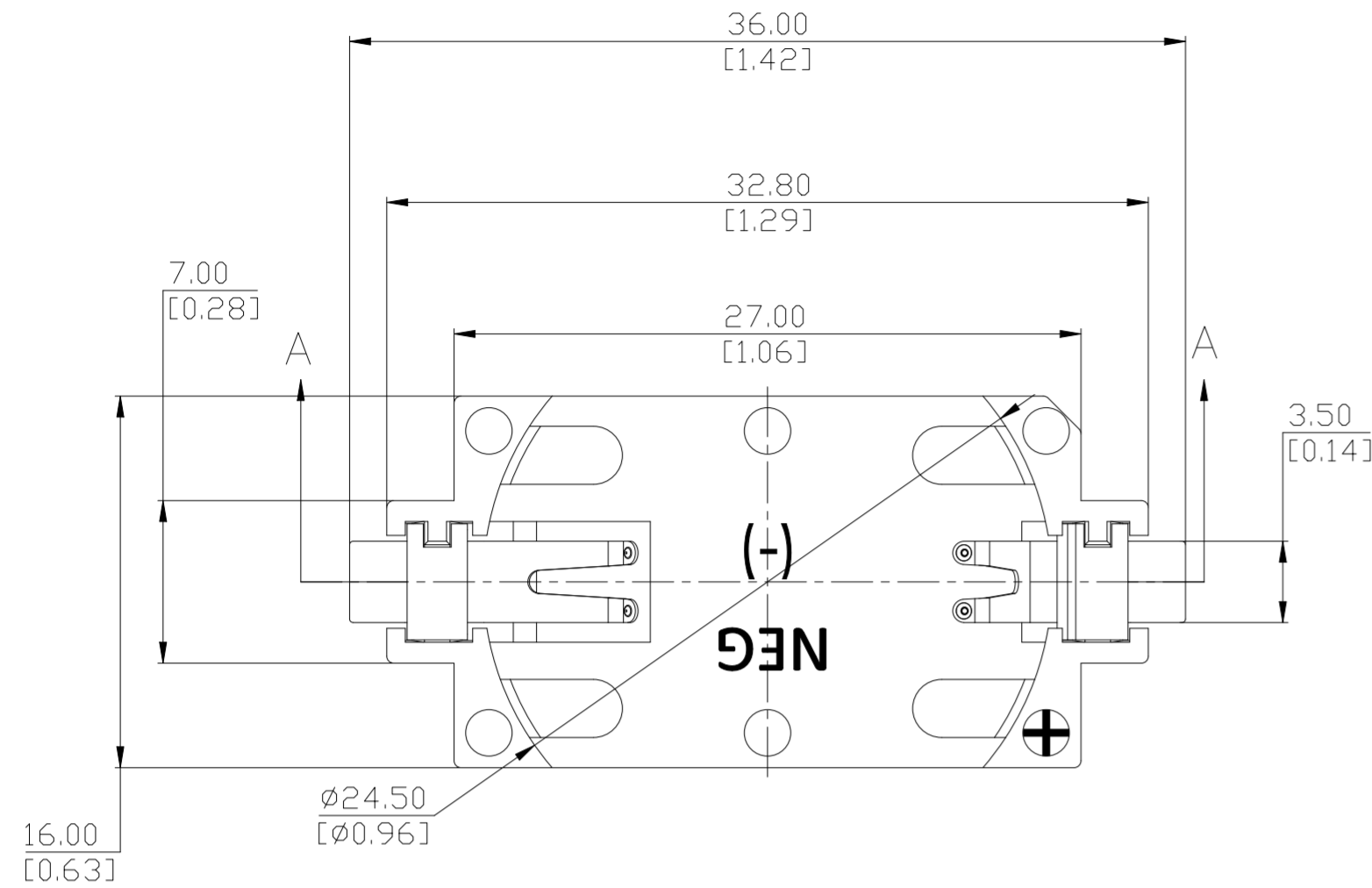


REVISIONS					
P	LTR	DESCRIPTION	DATE	DWN	APVD
B		REVISED PER ECN-25-319843	05MAY2025	MS	JM



SUGGESTED PCB LAYOUT

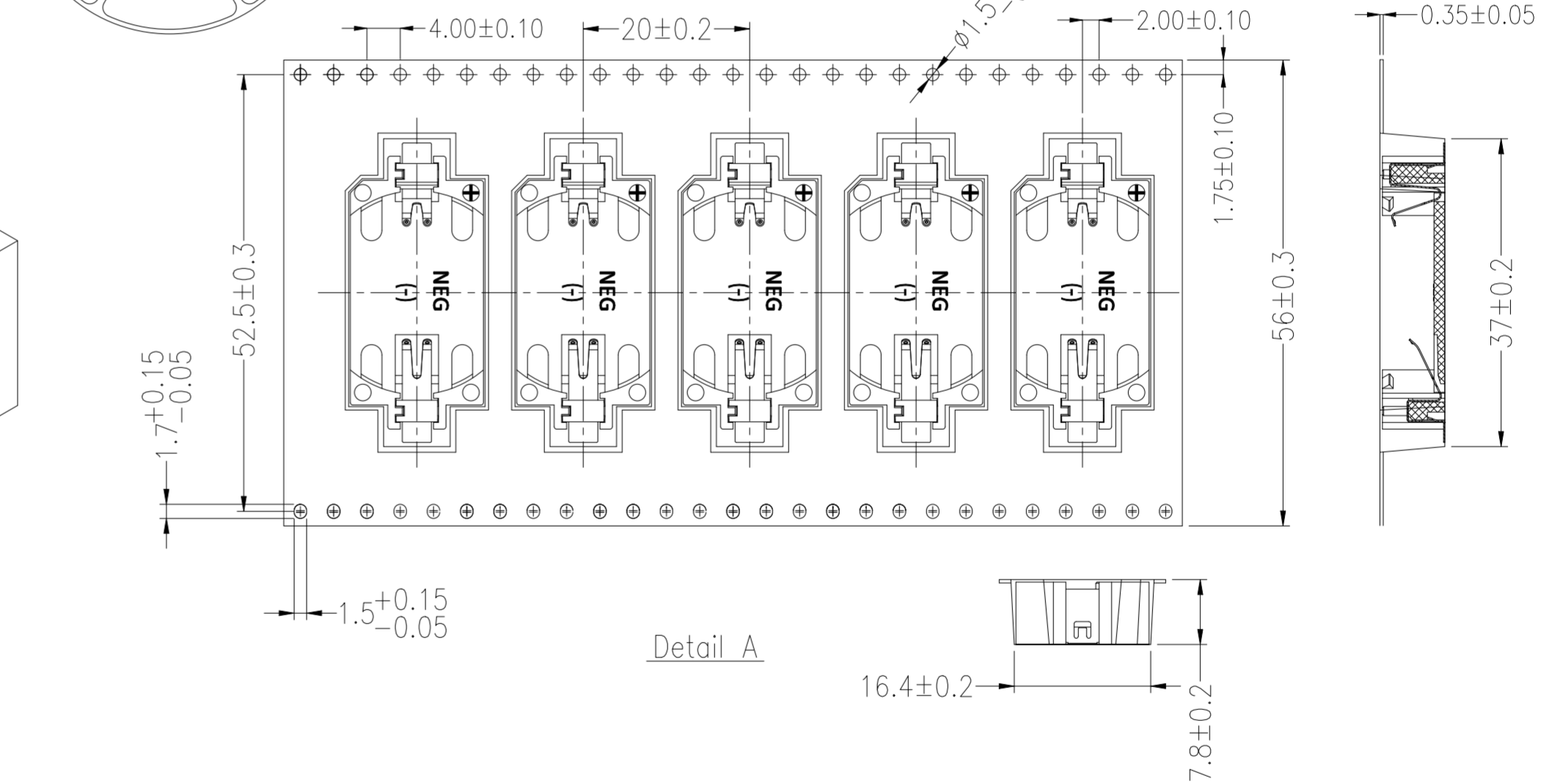
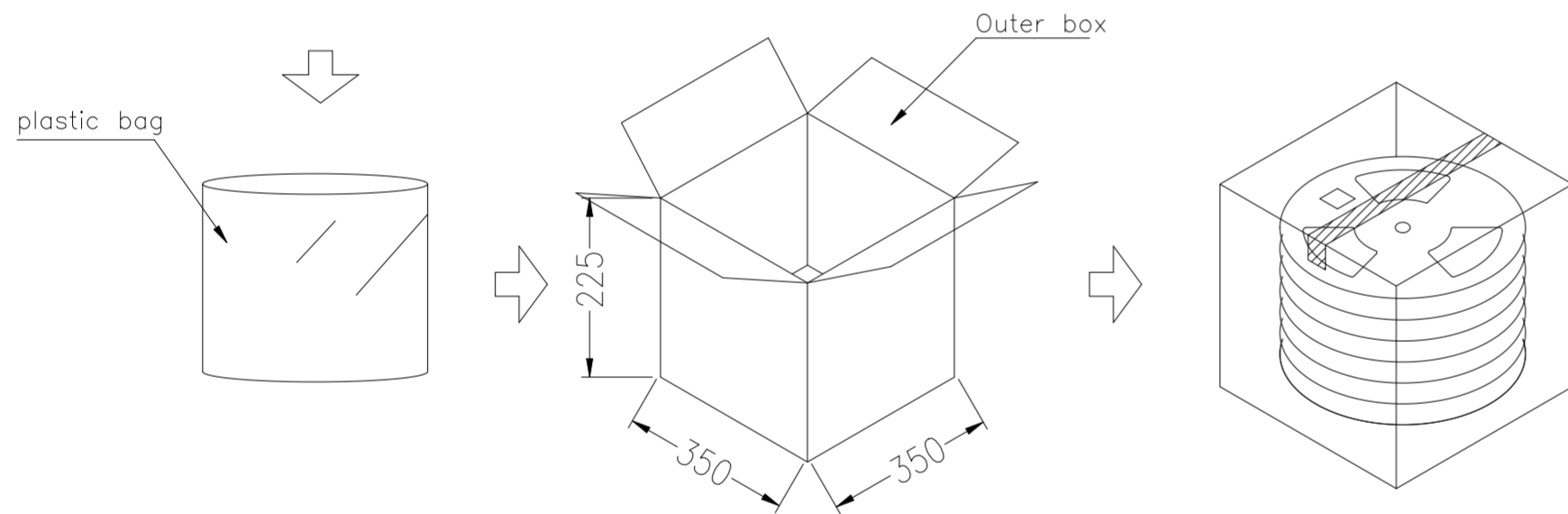
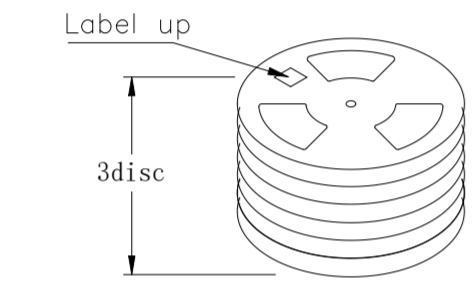
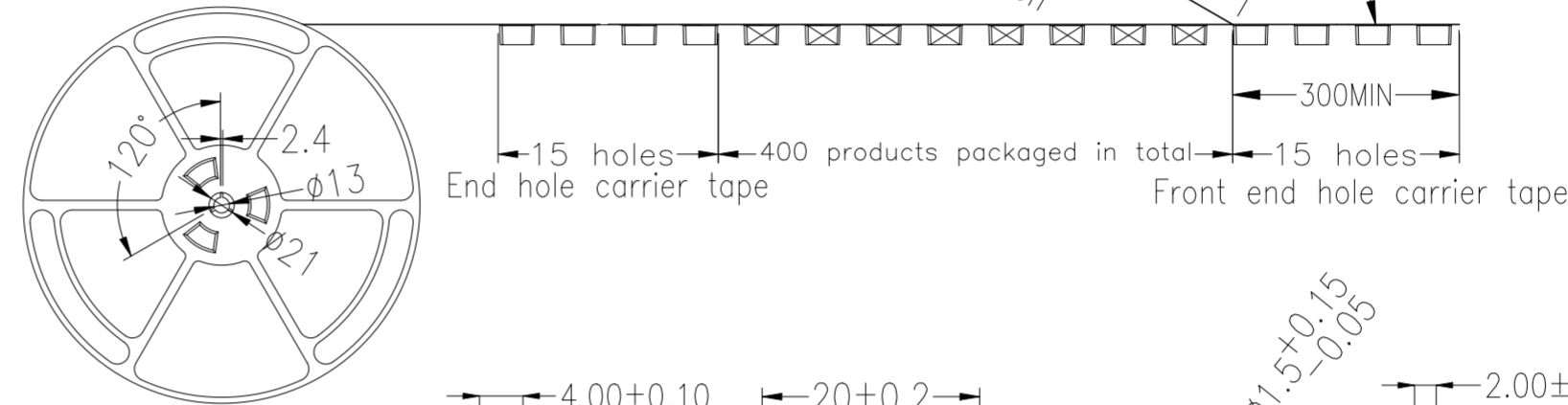
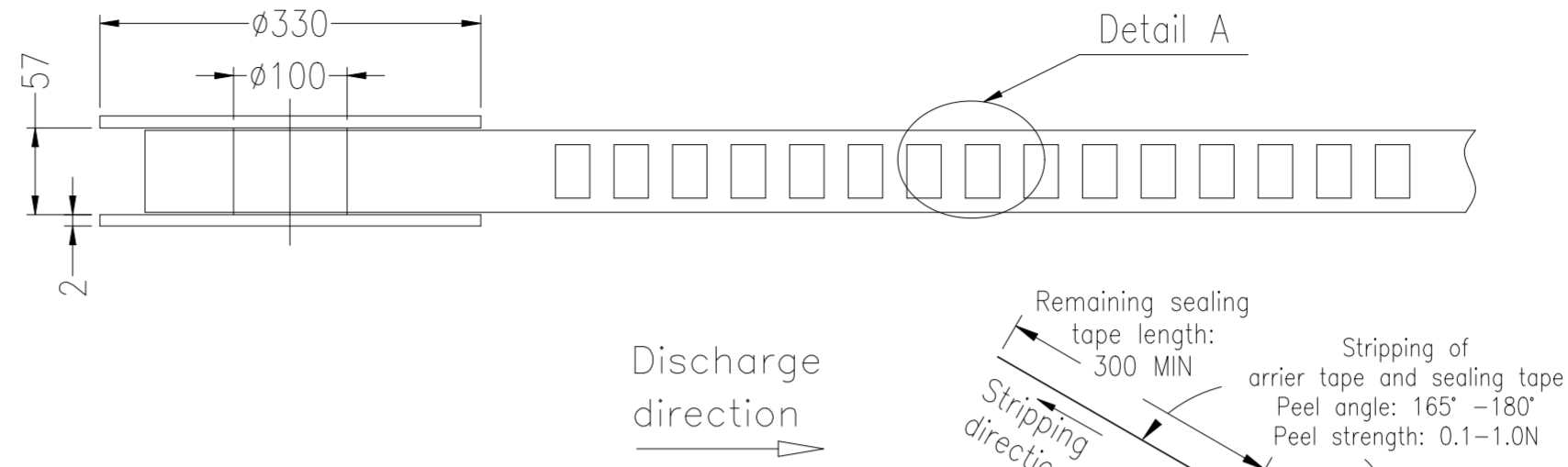
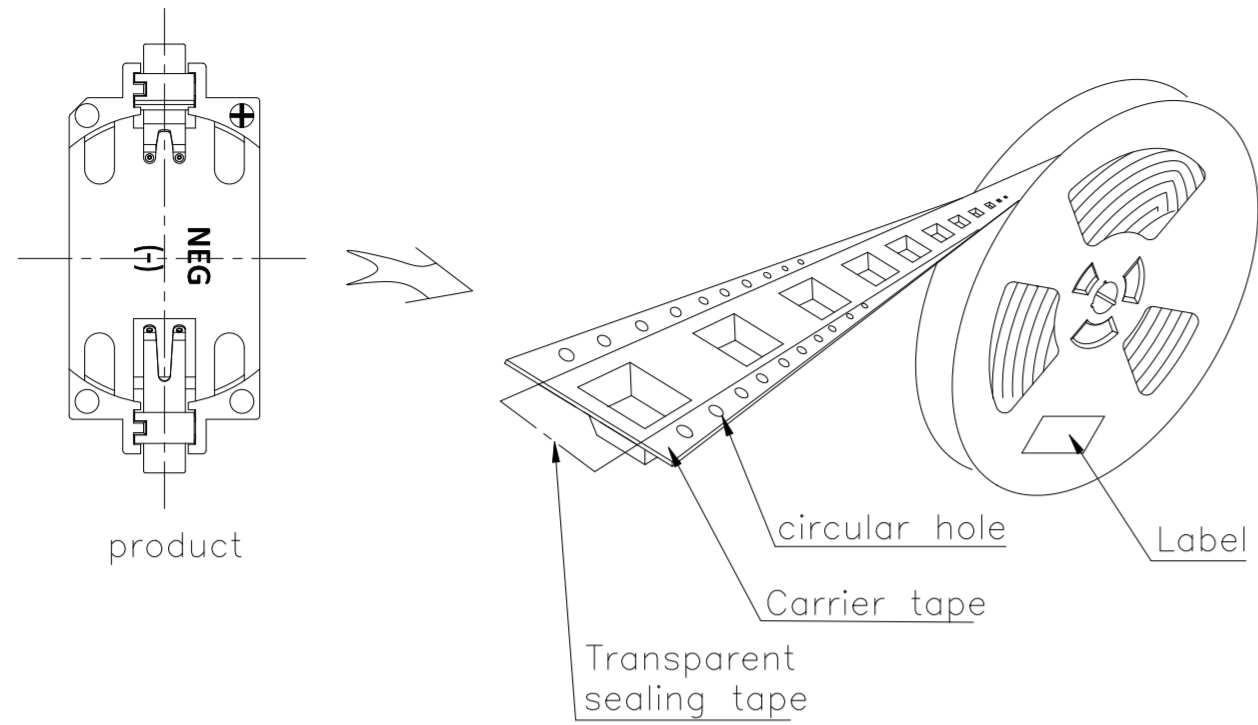
NOTES: (UNLESS OTHERWISE SPECIFIED)

1. ALL DIMENSIONS ARE IN MILLIMETERS [IN].
2. DIMENSIONS APPLY AFTER FINISHING.
3. MANUFACTURE TO BE COMPLIANT WITH EU RoHS DIRECTIVE, USE MATERIALS THAT DO NOT CONTAIN REACH SUBSTANCES OF VERY HIGH CONCERN >1000ppm, AND USE DRC CONFLICT-FREE SOURCED MATERIALS.
4. ELECTRICAL SPECIFICATIONS ARE FOR LISTED FOR REFERENCE ONLY. SEE LINX DATA SHEET FOR CURRENT PROPERTIES
  1. CONTACT RESISTANCE: NTE 50m $\Omega$
  2. INSULATION RESISTANCE: 100M $\Omega$  MAX
  3. DIELECTRIC RESISTANCE: 500VAC
5. MECHANICAL PROPERTIES
  1. MATERIAL: LCP UL94V-0, WHITE
  2. OPERATING TEMPERATURE: -25°C - +85°C
  3. UNLISTED DIMENSIONS CONTROLLED BY SOLID MODEL AT LATEST REVISION.
6. TAPE OR REEL
7. LABEL PACKAGING (REEL, LOT-BAGS AND BOXES) IAW LABELS CONFORMING TO LINX DRAWING [MEC-LBL-4X2.5-PAPER-ID]

BAT-HLD-008-SMT-TR  
PN NUMBER

THIS DRAWING IS A CONTROLLED DOCUMENT.		DWN MADHAN_S 04FEB2025	TE Connectivity Ltd.	
DIMENSIONS: mm		CHK MOHANTY, JAGRUTI 04FEB2025	NAME -	
TOLERANCES UNLESS OTHERWISE SPECIFIED:		APVD MOHANTY, JAGRUTI 04FEB2025	PRODUCT SPEC 108-161663	
0 PLC $\pm$ -		APPLICATION SPEC -	SIZE A2	CAGE CODE 00779
1 PLC $\pm$ 0.50		WEIGHT -	DRAWING NO BAT-HLD-008-SMT-TR	RESTRICTED TO -
2 PLC $\pm$ 0.40		MATERIAL LCP PHOSPHOR BRONZE	SCALE 1:1	SHEET 1 of 2
3 PLC $\pm$ 0.30		FINISH Au/Ni	REV B	
4 PLC $\pm$ 0.20				
ANGLES $\pm$ 1', 0.5'				

REVISIONS					
P	LTR	DESCRIPTION	DATE	DWN	APVD
-	-	SEE SHEET 1	-	-	-



Technical requirements:

- The cumulative allowable tolerance for the distance between ten circular holes is  $\pm 0.2\text{mm}$
- With a length of 250mm, the allowable bending degree is 1mm
- The material thickness shall be measured at the edge of the carrier tape
- All dimensions are defined according to the EIA-481-C standard
- Material: Black PS T=0.35mm
- All rollers are gray blue hollow rotating plastic rollers
- Overall molding length: 8.6M,
- Non specified tolerance range:  $\pm 0.1\text{mm}$ ; Exceeding 250mm does not calculate cumulative error
- The chamfer R of any unmarked part of the cavity shape is 0.2-0.3; The draft angle not marked is below 3°

Packaging information:

- Each roll contains 400 products, with relevant labels attached to the outside of the roll;
- Put every 3 rolls in a plastic bag;
- Each outer box contains 3 plates, with a total of 1200 products;
- Seal the top and bottom of the outer box with adhesive tape to form the character "E";
- Battery holder packaging material BS-2450-2 SMT roll (BS-2450-2-01-R)

THIS DRAWING IS A CONTROLLED DOCUMENT.		DWN MADHAN_S 04FEB2025	TE Connectivity Ltd.	
DIMENSIONS: mm		CHK MOHANTY, JAGRUTI 04FEB2025		
TOLERANCES UNLESS OTHERWISE SPECIFIED:		APVD MOHANTY, JAGRUTI 04FEB2025	NAME BATTERY HOLDER SURFACE MNT CR2450 CELL	
0 PLC $\pm -$		PRODUCT SPEC 108-161663	SIZE A2	
1 PLC $\pm 0.50$		APPLICATION SPEC	CAGE CODE 00779	DRAWING NO BAT-HLD-008-SMT-TR
2 PLC $\pm 0.40$		WEIGHT -	RESTRICTED TO	
3 PLC $\pm 0.30$		CUSTOMER DRAWING	SCALE 1:1	SHEET 2 of 2
4 PLC $\pm 0.20$			REV B	
ANGLES $\pm 1', 0.5'$				
FINISH				