



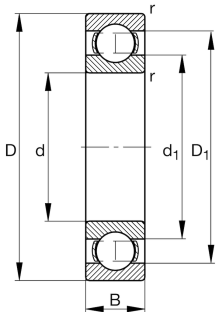
FAG

61821-Y

Deep groove ball bearing

Deep groove ball bearing 618..-Y, single row, brass sheet metal cage

Technical information



Your current product variant

Sealing	Without	Not sealed
Cage	Y	Brass sheet metal
Tolerance class	PN	Normal (PN)
Dimensional / heat stabilization	S0	Rings dimensional stabilized up to 150°
Lubricant	Without	Bearing not greased
Radial internal clearance	CN (Group N)	Normal internal clearance
Bore type	Z	Cylindrical

Main Dimensions & Performance Data

d	105 mm	Bore diameter
D	130 mm	Outside diameter
B	13 mm	Width
C _r	22,100 N	Basic dynamic load rating, radial
C _{0r}	23,600 N	Basic static load rating, radial
C _{ur}	1,320 N	Fatigue load limit, radial
n _G	9,200 1/min	Limiting speed
n _{gr}	3,900 1/min	Reference speed
≈m	0.34 kg	Weight



Mounting dimensions

$d_{a\min}$	109.6 mm	Minimum diameter shaft shoulder
$D_{a\max}$	125.4 mm	Maximum diameter of housing shoulder
$r_{a\max}$	1 mm	Maximum fillet radius

Dimensions

r_{\min}	1 mm	Minimum chamfer dimension
D_1	122.11 mm	Shoulder diameter outer ring
d_1	113.2 mm	Shoulder diameter inner ring

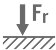





Temperature range

T_{\min}	-30 °C	Operating temperature min.
T_{\max}	150 °C	Operating temperature max.

Calculation factors

f_0	15.9	Calculation factor
-------	------	--------------------

Characteristics

	Radial load
	Axial load in one direction
	Axial load in two directions
	Grease Lubrication
	Oil Lubrication
	Not sealed