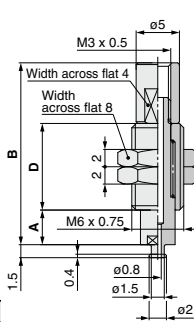


# Buffer Assembly Part No.

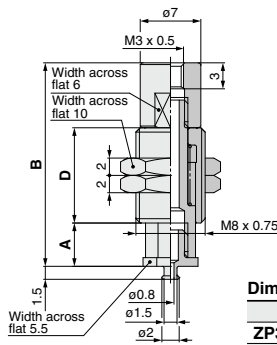
Vacuum Inlet Direction **Vertical**

Buffer assembly part no.	Weight(g)
ZP3B-T1J3-B3	3.5
ZP3B-T1J6-B3	4.3
ZP3B-T1K3-B3	6.7
ZP3B-T1K6-B3	8.1

ZP3B-T1J-B3



ZP3B-T1K-B3



Applicable pad part no.
ZP3-015U
ZP3-02U
ZP3-035U

**Dimensions (per stroke)**

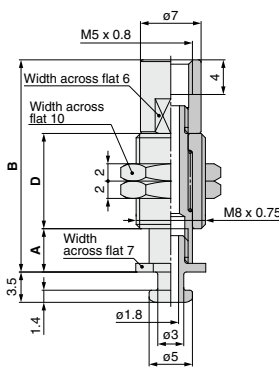
Model	A	B	D
ZP3B-T1J3-B3	4	21	10
ZP3B-T1J6-B3	7	28	14

**Dimensions (per stroke)**

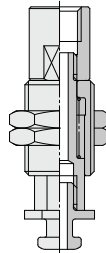
Model	A	B	D
ZP3B-T1K3-B3	5	23.5	11
ZP3B-T1K6-B3	8	30	14.5

Buffer assembly part no.	Weight(g)
ZP3B-T2AJ3-B5	7.1
ZP3B-T2AJ6-B5	8.3
ZP3B-T2AJ10-B5	10.2
ZP3B-T2AK3-B5	7.0
ZP3B-T2AK6-B5	8.3
ZP3B-T2AK10-B5	10.2

ZP3B-T2AJ-B5



ZP3B-T2AK-B5



Applicable pad part no.
ZP3-04UM
ZP3-06UM
ZP3-08UM
ZP3-04B
ZP3-06B
ZP3-08B

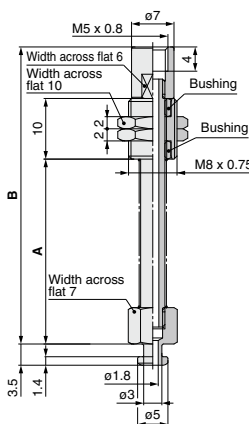
**Dimensions (per stroke)**

Model	A	B	D
ZP3B-T2A☆3-B5	5	24.5	11
ZP3B-T2A☆6-B5	8	31	14.5
ZP3B-T2A☆10-B5	12	41	20.5

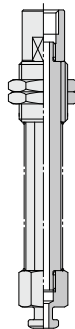
Note) The symbol "☆" indicates buffer type "J" or "K".

Buffer assembly part no.	Weight(g)
ZP3B-T2AJB15-B5	10.0
ZP3B-T2AJB20-B5	10.6
ZP3B-T2AK15-B5	12.0
ZP3B-T2AK20-B5	13.1

ZP3B-T2AJB-B5



ZP3B-T2AK-B5



Applicable pad part no.
ZP3-04UM
ZP3-06UM
ZP3-08UM
ZP3-04B
ZP3-06B
ZP3-08B

**Dimensions (per stroke)**

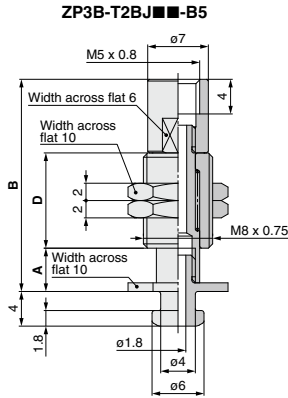
Model	A	B
ZP3B-T2A☆15-B5	30.5	49
ZP3B-T2A☆20-B5	38	56.5

Note) The symbol "☆" indicates buffer type "JB" or "KB".

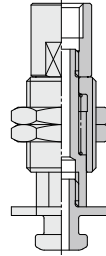
\* Refer to the 897 for nut tightening torque.

## Vacuum Inlet Direction **Vertical**

Buffer assembly part no.	Weight(g)
ZP3B-T2BJ3-B5	7.8
ZP3B-T2BJ6-B5	8.9
ZP3B-T2BJ10-B5	10.9
ZP3B-T2BK3-B5	7.7
ZP3B-T2BK6-B5	8.9
ZP3B-T2BK10-B5	10.9



ZP3B-T2BK series



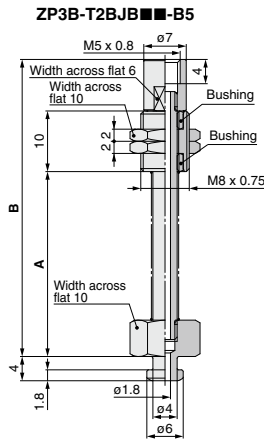
Applicable pad part no.
ZP3-10UM
ZP3-13UM
ZP3-16UM
ZP3-10B
ZP3-13B
ZP3-16B

### Dimensions (per stroke)

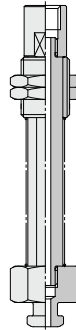
Model	A	B	D
ZP3B-T2B☆3-B5	5	24.5	11
ZP3B-T2B☆6-B5	8	31	14.5
ZP3B-T2B☆10-B5	12	41	20.5

Note) The symbol "☆" indicates buffer type "J" or "K".

Buffer assembly part no.	Weight(g)
ZP3B-T2BJB15-B5	12.5
ZP3B-T2BJB20-B5	15.6
ZP3B-T2BK15-B5	14.5
ZP3B-T2BK20-B5	15.6



ZP3B-T2BK series



Applicable pad part no.
ZP3-10UM
ZP3-13UM
ZP3-16UM
ZP3-10B
ZP3-13B
ZP3-16B

### Dimensions (per stroke)

Model	A	B
ZP3B-T2B☆15-B5	30.5	49
ZP3B-T2B☆20-B5	38	56.5

Note) The symbol "☆" indicates buffer type "JB" or "K".

ZP3

ZP2

ZP2V

ZP

ZPT

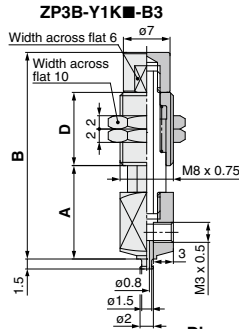
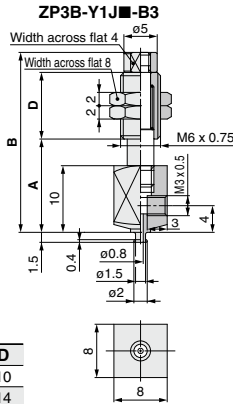
ZPR

XT661

# Series ZP3

## Vacuum Inlet Direction **Lateral**

Buffer assembly part no.	Weight(g)
ZP3B-Y1J3-B3	7.6
ZP3B-Y1J6-B3	8.5
ZP3B-Y1K3-B3	10.9
ZP3B-Y1K6-B3	12.1



Applicable pad part no.
ZP3-015U
ZP3-02U
ZP3-035U

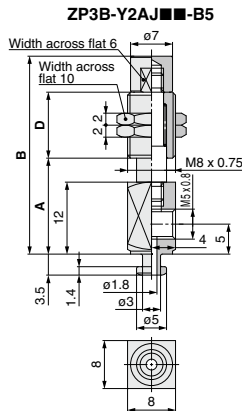
### Dimensions (per stroke)

Model	A	B	D
ZP3B-Y1J3-B3	14	27	10
ZP3B-Y1J6-B3	17	34	14

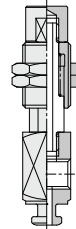
### Dimensions (per stroke)

Model	A	B	D
ZP3B-Y1K3-B3	14	31	11
ZP3B-Y1K6-B3	17	37.5	14.5

Buffer assembly part no.	Weight(g)
ZP3B-Y2AJ3-B5	12.5
ZP3B-Y2AJ6-B5	13.9
ZP3B-Y2AJ10-B5	16.3
ZP3B-Y2AK3-B5	11.9
ZP3B-Y2AK6-B5	13.1
ZP3B-Y2AK10-B5	15.1



ZP3B-Y2AK



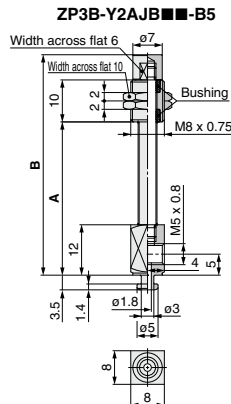
Applicable pad part no.
ZP3-04UM
ZP3-06UM
ZP3-08UM
ZP3-04B
ZP3-06B
ZP3-08B

### Dimensions (per stroke)

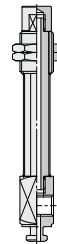
Model	A	B	D
ZP3B-Y2A <sup>☆</sup> 3-B5	16.5	34	11
ZP3B-Y2A <sup>☆</sup> 6-B5	19	40	14.5
ZP3B-Y2A <sup>☆</sup> 10-B5	23	50	20.5

Note) The symbol "<sup>☆</sup>" indicates buffer type "J" or "K".

Buffer assembly part no.	Weight(g)
ZP3B-Y2AJB15-B5	14.0
ZP3B-Y2AJB20-B5	14.8
ZP3B-Y2AK15-B5	15.2
ZP3B-Y2AK20-B5	16.3



ZP3B-Y2AK



Applicable pad part no.
ZP3-04UM
ZP3-06UM
ZP3-08UM
ZP3-04B
ZP3-06B
ZP3-08B

### Dimensions (per stroke)

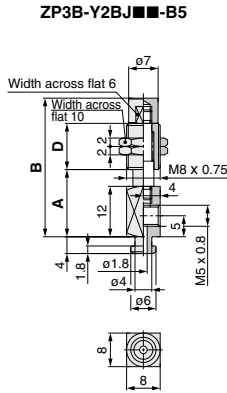
Model	A	B
ZP3B-Y2A <sup>☆</sup> 15-B5	36.5	53
ZP3B-Y2A <sup>☆</sup> 20-B5	44	60.5

Note) The symbol "<sup>☆</sup>" indicates buffer type "JB" or "KB".

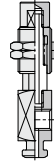
\* Refer to the 897 for nut tightening torque.

## Vacuum Inlet Direction **Lateral**

Buffer assembly part no.	Weight(g)
ZP3B-Y2BJ3-B5	13.0
ZP3B-Y2BJ6-B5	14.3
ZP3B-Y2BJ10-B5	16.7
ZP3B-Y2BK3-B5	12.4
ZP3B-Y2BK6-B5	13.6
ZP3B-Y2BK10-B5	15.5



ZP3B-Y2BK■-B5



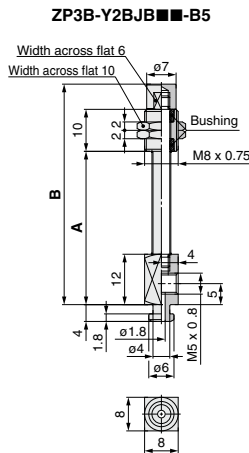
Applicable pad part no.
ZP3-10UM
ZP3-13UM
ZP3-16UM
ZP3-10B
ZP3-13B
ZP3-16B

### Dimensions (per stroke)

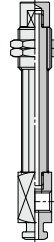
Model	A	B	D
ZP3B-Y2B☆3-B5	16.5	34	11
ZP3B-Y2B☆6-B5	19	40	14.5
ZP3B-Y2B☆10-B5	23	50	20.5

(Note) The symbol "☆" indicates buffer type "J" or "K".

Buffer assembly part no.	Weight(g)
ZP3B-Y2BJB15-B5	14.4
ZP3B-Y2BJB20-B5	15.2
ZP3B-Y2BK15-B5	15.6
ZP3B-Y2BK20-B5	16.7



ZP3B-Y2BK■-B5



Applicable pad part no.
ZP3-10UM
ZP3-13UM
ZP3-16UM
ZP3-10B
ZP3-13B
ZP3-16B

### Dimensions (per stroke)

Model	A	B
ZP3B-Y2B☆15-B5	36.5	53
ZP3B-Y2B☆20-B5	44	60.5

(Note) The symbol "☆" indicates buffer type "JB" or "K".

ZP3

ZP2

ZP2V

ZP

ZPT

ZPR

XT661

Series **ZP2**

# Buffer Assembly Part No.

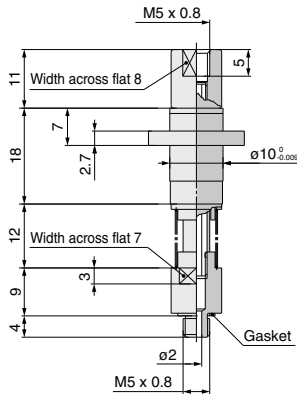
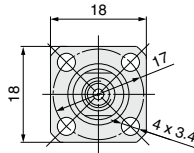
## Ball Spline

Buffer assembly part no.

**ZP2B-T3S6**

Applicable pad part no.

ZP02U   
ZP04U   
ZP06U   
ZP08U



ZP3

ZP2

ZP2V

ZP

ZPT

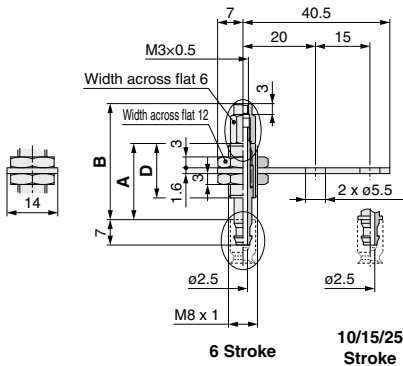
ZPR

XT661

\* Refer to page 1244 for applicable pad part no.  
\* Refer to page 897 for nut tightening torque.

## Vacuum Entry Vertical/Buffer Assembly Part No.

ZPB1J<sup>6 15</sup><sub>10 25</sub>-B3

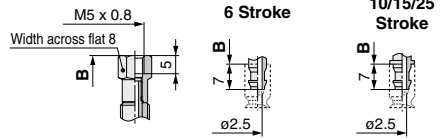


**Dimensions**

(Vacuum entry: Female thread M3 x 0.5)

Model	A	B	D
ZPB1J6-B3	21	32	15
ZPB1J10-B3	54	65	
ZPB1J15-B3	59	70	43
ZPB1J25-B3	69	80	

ZPB1J<sup>6 15</sup><sub>10 25</sub>-B5

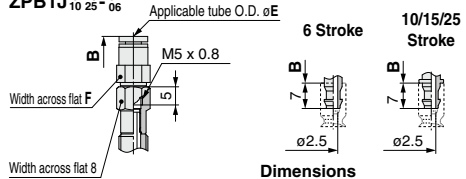


**Dimensions**

(Vacuum entry: Female thread M5 x 0.8)

Model	A	B	D
ZPB1J6-B5	21	34	15
ZPB1J10-B5	54	67	
ZPB1J15-B5	59	72	43
ZPB1J25-B5	69	82	

ZPB1J<sup>6 15</sup><sub>10 25</sub>-04

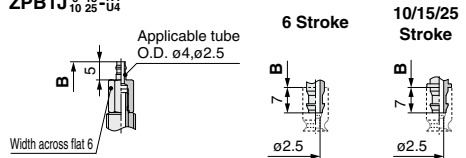


**Dimensions**

(Vacuum entry: One-touch type)

Model	A	D	E.4	E.6
	B	F	B	F
ZPB1J6-04	21	15	47.9	48.7
ZPB1J10-04	54	80.9	81.7	
ZPB1J15-04	59	85.9	86.7	10
ZPB1J25-04	69	95.9	96.7	

ZPB1J<sup>6 15</sup><sub>10 25</sub>-U4

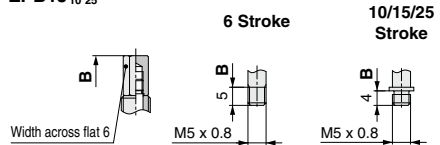


**Dimensions**

(Vacuum entry: Barb type)

Model	A	B	D
ZPB1J6-U4	21	35	15
ZPB1J10-U4	54	68	
ZPB1J15-U4	59	73	43
ZPB1J25-U4	69	83	

ZPB1J<sup>6 15</sup><sub>10 25</sub>



**Dimensions**

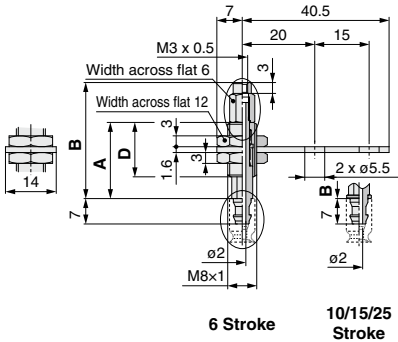
(Buffer for ZPR/ZPY)

Model	A	B	D
ZPB1J6	21	34	15
ZPB1J10	54	65	
ZPB1J15	59	70	43
ZPB1J25	69	80	

\* Refer to page 897 for nut tightening torque.

**Vacuum Entry Vertical/Buffer Assembly Part No.**

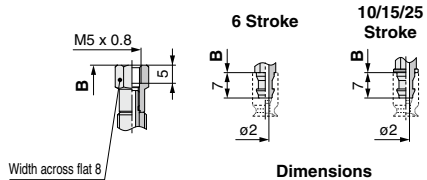
ZPB1K<sub>10</sub><sup>6 15</sup>/<sub>20</sub>-B3



**Dimensions**  
(Vacuum entry: Female thread M3 x 0.5)

Model	A	B	D
ZPB1K6-B3	21	32	15
ZPB1K10-B3	54	65	
ZPB1K15-B3	59	70	43
ZPB1K25-B3	69	80	

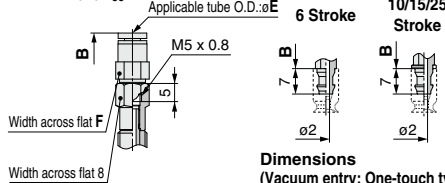
ZPB1K<sub>10</sub><sup>15</sup>/<sub>25</sub>-B5



**Dimensions**  
(Vacuum entry: Female thread M5 x 0.8)

Model	A	B	D
ZPB1K6-B5	21	34	15
ZPB1K10-B5	54	67	
ZPB1K15-B5	59	72	43
ZPB1K25-B5	69	82	

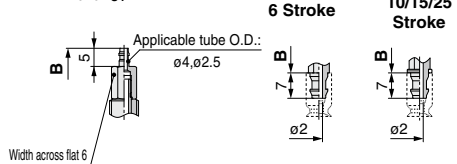
ZPB1K<sub>10</sub><sup>6 15</sup>/<sub>25</sub>-04



**Dimensions**  
(Vacuum entry: One-touch type)

Model	A	D	E:4	E:6
			F	F
ZPB1K6- <sup>04</sup> / <sub>25</sub>	21	15	47.9	48.7
ZPB1K10- <sup>04</sup> / <sub>25</sub>	54		80.9	81.7
ZPB1K15- <sup>04</sup> / <sub>25</sub>	59	43	85.9	86.7
ZPB1K25- <sup>04</sup> / <sub>25</sub>	69		95.9	96.7

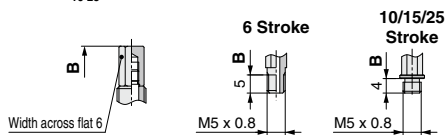
ZPB1K<sub>10</sub><sup>15</sup>/<sub>25</sub>-N4



**Dimensions**  
(Vacuum entry: Barb type)

Model	A	B	D
ZPB1K6-N4	21	35	15
ZPB1K10-N4	54	68	
ZPB1K15-N4	59	73	43
ZPB1K25-N4	69	83	

ZPB1K<sub>10</sub><sup>6 15</sup>/<sub>25</sub>



**Dimensions**  
(Buffer for ZPR/ZPY)

Model	A	B	D
ZPB1K6	21	34	15
ZPB1K10	54	65	
ZPB1K15	59	70	43
ZPB1K25	69	80	

ZP3

ZP2

ZP2V

ZP

ZPT

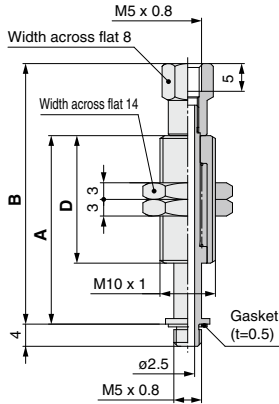
ZPR

XT661

\* Refer to page 897 for nut tightening torque.

## Vacuum Entry Vertical/Buffer Assembly Part No.

ZPB2J<sup>10 40</sup><sub>30 50</sub>-B5

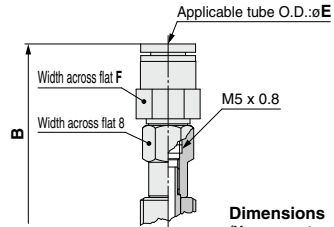


### Dimensions

(Vacuum entry: Female thread M5 x 0.8)

Model	A	B	D
ZPB2J10-B5	34	47	23
ZPB2J20-B5	72	85	51
ZPB2J30-B5	82	95	
ZPB2J40-B5	118	131	
ZPB2J50-B5	128	141	77

ZPB2J<sup>10 40</sup><sub>30 50</sub>-ø4

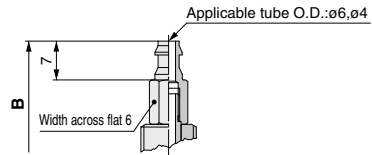


### Dimensions

(Vacuum entry: One-touch type)

Model	A	D	E:4		E:6	
			B	F	B	F
ZPB2J10-ø4	34	23	60.9		61.7	
ZPB2J20-ø4	72	51	98.9		99.7	
ZPB2J30-ø4	82		108.9	8	109.7	10
ZPB2J40-ø4	118		144.9		145.7	
ZPB2J50-ø4	128	77	154.9		155.7	

ZPB2J<sup>10 40</sup><sub>30 50</sub>-N6

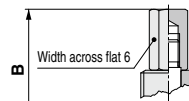


### Dimensions

(Vacuum entry: Barb type)

Model	A	B	D
ZPB2J10-N6	34	49	23
ZPB2J20-N6	72	87	51
ZPB2J30-N6	82	97	
ZPB2J40-N6	118	133	
ZPB2J50-N6	128	143	77

ZPB2J<sup>10 40</sup><sub>30 50</sub> (Without gasket)



### Dimensions

(Buffer for ZPR/ZPY)

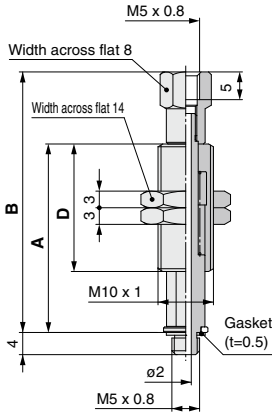
Model	A	B	D
ZPB2J10	34	45	23
ZPB2J20	72	83	51
ZPB2J30	82	93	
ZPB2J40	118	129	
ZPB2J50	128	139	77



\* Refer to page 897 for nut tightening torque.

**Vacuum Entry Vertical/Buffer Assembly Part No.**

ZPB2K<sup>10 40</sup>/<sub>20 50</sub>-B5

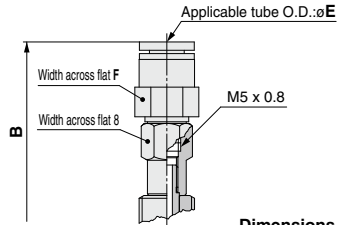


**Dimensions**

(Vacuum entry: Female thread M5 x 0.8)

Model	A	B	D
ZPB2K10-B5	34	47	23
ZPB2K20-B5	72	85	51
ZPB2K30-B5	82	95	
ZPB2K40-B5	118	131	
ZPB2K50-B5	128	141	77

ZPB2K<sup>10 40</sup>/<sub>20 50</sub>-ø4

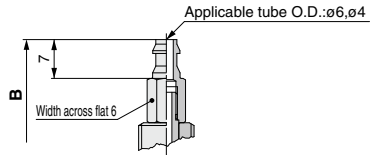


**Dimensions**

(Vacuum entry: One-touch type)

Model	A	D	E:4		E:6	
			B	F	B	F
ZPB2K10-ø4	34	23	60.9		61.7	
ZPB2K20-ø4	72	51	98.9		99.7	
ZPB2K30-ø4	82	82	108.9	8	109.7	10
ZPB2K40-ø4	118	118	144.9		145.7	
ZPB2K50-ø4	128	77	154.9		155.7	

ZPB2K<sup>10 40</sup>/<sub>20 50</sub>-N6

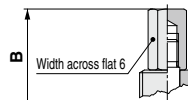


**Dimensions**

(Vacuum entry: Barb type)

Model	A	B	D
ZPB2K10-N6	34	49	23
ZPB2K20-N6	72	87	51
ZPB2K30-N6	82	97	
ZPB2K40-N6	118	133	
ZPB2K50-N6	128	143	77

ZPB2K<sup>10 40</sup>/<sub>20 50</sub> (Without gasket)



**Dimensions**

(Buffer for ZPR/ZPY)

Model	A	B	D
ZPB2K10	34	45	23
ZPB2K20	72	83	51
ZPB2K30	82	93	
ZPB2K40	118	129	
ZPB2K50	128	139	77

ZP3

ZP2

ZP2V

ZP

ZPT

ZPR

ZPT

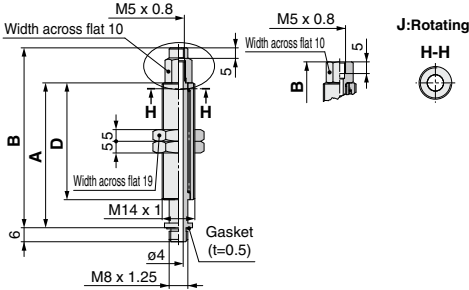
XT661

\* Refer to page 897 for nut tightening torque.

## Vacuum Entry Vertical/Buffer Assembly Part No.

ZPB3J10-B5

ZPB3J<sup>20</sup>/<sub>30</sub>-B5



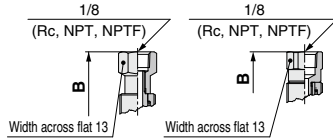
### Dimensions

(Vacuum entry: Female thread M5 x 0.8)

Model	A	B	D
ZPB3J10-B5	62	77	
ZPB3J20-B5	72	81	50
ZPB3J30-B5	82	91	
ZPB3J50-B5	127	136	75

ZPB3J10-◇01

ZPB3J<sup>20</sup>/<sub>30</sub>-◇01



### Dimensions

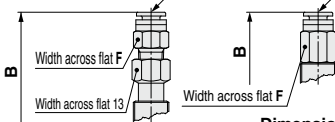
(Vacuum entry: 1/8 type)

Model	A	B	D
ZPB3J10-◇01	62	78.5	
ZPB3J20-◇01	72	84	50
ZPB3J30-◇01	82	94	
ZPB3J50-◇01	127	139	75

ZPB3J10-<sup>06</sup>/<sub>08</sub>

ZPB3J<sup>20</sup>/<sub>30</sub>-<sup>06</sup>/<sub>08</sub>

Applicable tube O.D.:φE Applicable tube O.D.:φE



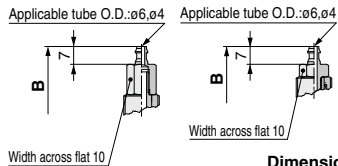
### Dimensions

(Vacuum entry: One-touch type)

Model	A	D	E:6	E:8
ZPB3J10- <sup>06</sup> / <sub>08</sub>	62	97	102.5	
ZPB3J20- <sup>06</sup> / <sub>08</sub>	72	50	91.9	96.9
ZPB3J30- <sup>06</sup> / <sub>08</sub>	82	101.9	12	106.9
ZPB3J50- <sup>06</sup> / <sub>08</sub>	127	75	146.9	151.9

ZPB3J10-N<sup>6</sup>/<sub>U6</sub>

ZPB3J<sup>20</sup>/<sub>30</sub>-N<sup>6</sup>/<sub>U6</sub>



### Dimensions

(Vacuum entry: Barb type)

Model	A	B	D
ZPB3J10-N <sup>6</sup> / <sub>U6</sub>	62	81	
ZPB3J20-N <sup>6</sup> / <sub>U6</sub>	72	84	50
ZPB3J30-N <sup>6</sup> / <sub>U6</sub>	82	94	
ZPB3J50-N <sup>6</sup> / <sub>U6</sub>	127	139	75

ZPB3J10  
(Without gasket)

ZPB3J<sup>20</sup>/<sub>30</sub>  
(Without gasket)



### Dimensions

(Buffer for ZPR/ZPY)

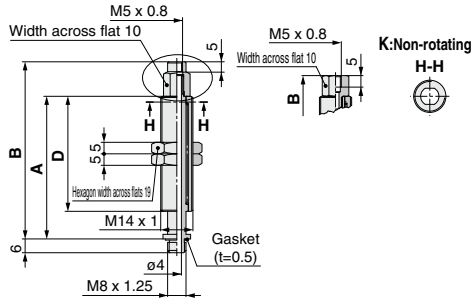
Model	A	B	D
ZPB3J10	62	80	
ZPB3J20	72	77	50
ZPB3J30	82	87	
ZPB3J50	127	132	75

\* Refer to page 897 for nut tightening torque.

**Vacuum Entry Vertical/Buffer Assembly Part No.**

**ZPB3K10-B5**

**ZPB3K<sup>20</sup>/<sub>30</sub>-B5**



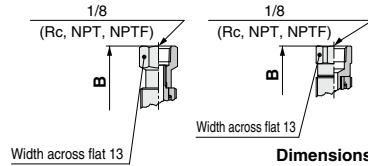
**Dimensions**

(Vacuum entry: Female thread M5 x 0.8)

Model	A	B	D
ZPB3K10-B5	62	77	
ZPB3K20-B5	72	81	50
ZPB3K30-B5	82	91	
ZPB3K50-B5	127	136	75

**ZPB3K10-◇01**

**ZPB3K<sup>20</sup>/<sub>30</sub>-◇01**



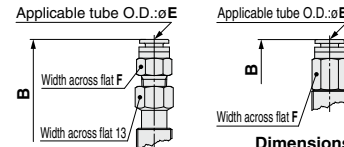
**Dimensions**

(Vacuum entry: 1/8 type)

Model	A	B	D
ZPB3K10-◇01	62	78.5	
ZPB3K20-◇01	72	84	50
ZPB3K30-◇01	82	94	
ZPB3K50-◇01	127	139	75

**ZPB3K10-<sup>06</sup>/<sub>08</sub>**

**ZPB3K<sup>20</sup>/<sub>30</sub>-<sup>06</sup>/<sub>08</sub>**



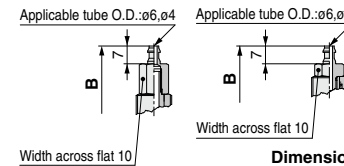
**Dimensions**

(Vacuum entry: One-touch type)

Model	A	D	E:6		E:8	
			B	F	B	F
ZPB3K10- <sup>06</sup> / <sub>08</sub>	62	97	102.5			
ZPB3K20- <sup>06</sup> / <sub>08</sub>	72	50	91.9	12	96.9	14
ZPB3K30- <sup>06</sup> / <sub>08</sub>	82		101.9		106.9	
ZPB3K50- <sup>06</sup> / <sub>08</sub>	127	75	146.9		151.9	

**ZPB3K10-<sup>20</sup>/<sub>30</sub>-<sup>06</sup>/<sub>08</sub>**

**ZPB3K<sup>20</sup>/<sub>30</sub>-<sup>20</sup>/<sub>30</sub>-<sup>06</sup>/<sub>08</sub>**



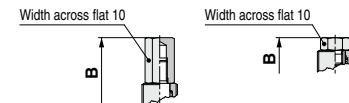
**Dimensions**

(Vacuum entry: Barb type)

Model	A	B	D
ZPB3K10- <sup>06</sup> / <sub>08</sub>	62	81	
ZPB3K20- <sup>06</sup> / <sub>08</sub>	72	84	50
ZPB3K30- <sup>06</sup> / <sub>08</sub>	82	94	
ZPB3K50- <sup>06</sup> / <sub>08</sub>	127	139	75

**ZPB3K10**  
(Without gasket)

**ZPB3K<sup>20</sup>/<sub>30</sub>**  
(Without gasket)



**Dimensions**

(Buffer for ZPR/ZPY)

Model	A	B	D
ZPB3K10	62	80	
ZPB3K20	72	77	50
ZPB3K30	82	87	
ZPB3K50	127	132	75

ZP3

ZP2

ZP2V

ZP

ZPT

ZPR

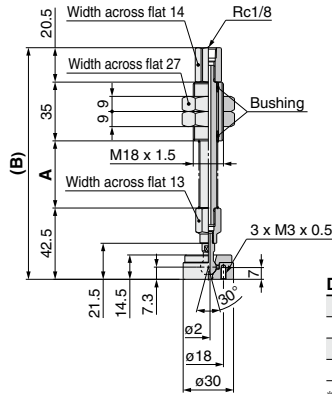
XT661

# Series ZP2 Buffer Assembly Part No.

\* Refer to page 897 for nut tightening torque.

## Heavy-duty Ball Joint Buffer Assembly Part No. (Type T)

Buffer assembly part no.	
Buffer body (Material: Brass)	Buffer body (Material: Steel)
ZP2B-TF1JB25	ZP2B-TF1JF25
ZP2B-TF1JB50	ZP2B-TF1JF50
ZP2B-TF1JB75	ZP2B-TF1JF75



### Dimensions

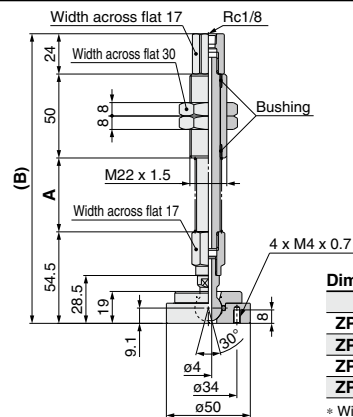
Model	A	B
ZP2B-TF1(JB/JF)25	40	138
ZP2B-TF1(JB/JF)50	75	173
ZP2B-TF1(JB/JF)75	111	209

\* With three M3 bolts

Applicable pad part no.

ZP40H□  
ZP50H□  
ZP40HB□  
ZP50HB□  
ZP2-40H□  
ZP2-50H□

Buffer assembly part no.	
Buffer body (Material: Brass)	Buffer body (Material: Steel)
ZP2B-TF2JB25	ZP2B-TF2JF25
ZP2B-TF2JB50	ZP2B-TF2JF50
ZP2B-TF2JB75	ZP2B-TF2JF75
ZP2B-TF2JB100	ZP2B-TF2JF100



### Dimensions

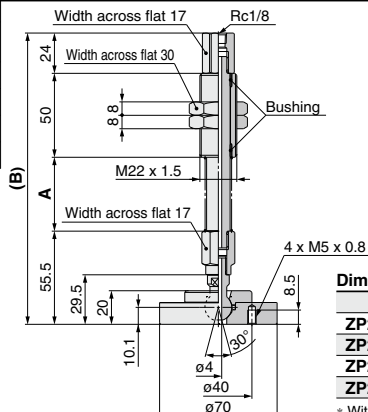
Model	A	B
ZP2B-TF2(JB/JF)25	44	172.5
ZP2B-TF2(JB/JF)50	80	208.5
ZP2B-TF2(JB/JF)75	120	248.5
ZP2B-TF2(JB/JF)100	155	283.5

\* With four M4 bolts

Applicable pad part no.

ZP63H□  
ZP80H□  
ZP63HB□  
ZP80HB□  
ZP2-63H□  
ZP2-80H□

Buffer assembly part no.	
Buffer body (Material: Brass)	Buffer body (Material: Steel)
ZP2B-TF3JB25	ZP2B-TF3JF25
ZP2B-TF3JB50	ZP2B-TF3JF50
ZP2B-TF3JB75	ZP2B-TF3JF75
ZP2B-TF3JB100	ZP2B-TF3JF100



### Dimensions

Model	A	B
ZP2B-TF3(JB/JF)25	44	173.5
ZP2B-TF3(JB/JF)50	80	209.5
ZP2B-TF3(JB/JF)75	120	249.5
ZP2B-TF3(JB/JF)100	155	284.5

\* With four M5 bolts

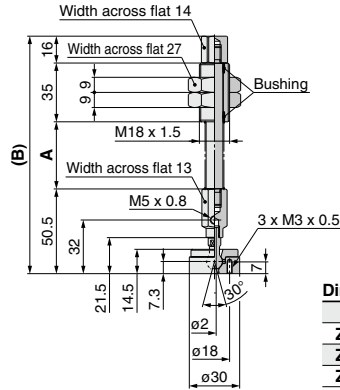
Applicable pad part no.

ZP100H□  
ZP125H□  
ZP100HB□  
ZP125HB□  
ZP2-100H□  
ZP2-125H□

\* Refer to page 897 for nut tightening torque.

## Heavy-duty Ball Joint Buffer Assembly Part No. (Type X)

Buffer assembly part no.	
Buffer body (Material: Brass)	Buffer body (Material: Steel)
ZP2B-XF1JB25	ZP2B-XF1JF25
ZP2B-XF1JB50	ZP2B-XF1JF50
ZP2B-XF1JB75	ZP2B-XF1JF75



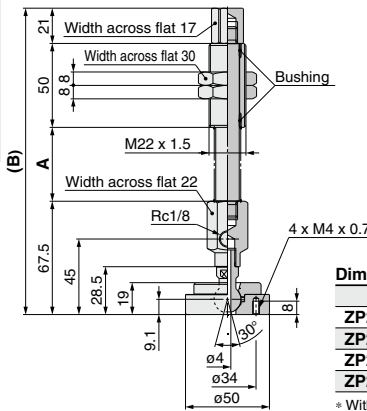
Applicable pad part no.	
ZP40H□	
ZP50H□	
ZP40HB□	
ZP50HB□	
ZP2-40H□	
ZP2-50H□	

### Dimensions

Model	A	B
ZP2B-XF1(JB/JF)25	40	141.5
ZP2B-XF1(JB/JF)50	75	176.5
ZP2B-XF1(JB/JF)75	111	212.5

\* With three M3 bolts

Buffer assembly part no.	
Buffer body (Material: Brass)	Buffer body (Material: Steel)
ZP2B-XF2JB25	ZP2B-XF2JF25
ZP2B-XF2JB50	ZP2B-XF2JF50
ZP2B-XF2JB75	ZP2B-XF2JF75
ZP2B-XF2JB100	ZP2B-XF2JF100



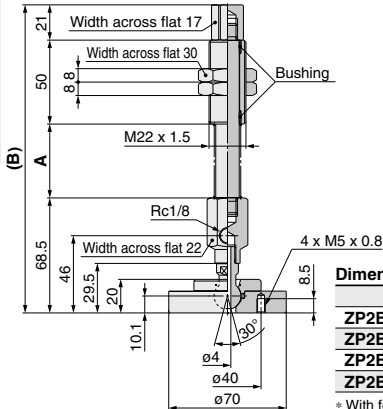
Applicable pad part no.	
ZP63H□	
ZP80H□	
ZP63HB□	
ZP80HB□	
ZP2-63H□	
ZP2-80H□	

### Dimensions

Model	A	B
ZP2B-XF2(JB/JF)25	44	182.5
ZP2B-XF2(JB/JF)50	80	218.5
ZP2B-XF2(JB/JF)75	120	258.5
ZP2B-XF2(JB/JF)100	155	293.5

\* With four M4 bolts

Buffer assembly part no.	
Buffer body (Material: Brass)	Buffer body (Material: Steel)
ZP2B-XF3JB25	ZP2B-XF3JF25
ZP2B-XF3JB50	ZP2B-XF3JF50
ZP2B-XF3JB75	ZP2B-XF3JF75
ZP2B-XF3JB100	ZP2B-XF3JF100



Applicable pad part no.	
ZP100H□	
ZP125H□	
ZP100HB□	
ZP125HB□	
ZP2-100H□	
ZP2-125H□	

### Dimensions

Model	A	B
ZP2B-XF3(JB/JF)25	44	183.5
ZP2B-XF3(JB/JF)50	80	219.5
ZP2B-XF3(JB/JF)75	120	259.5
ZP2B-XF3(JB/JF)100	155	294.5

\* With four M5 bolts

ZP3

ZP2

ZP2V

ZP

ZPT

ZPR

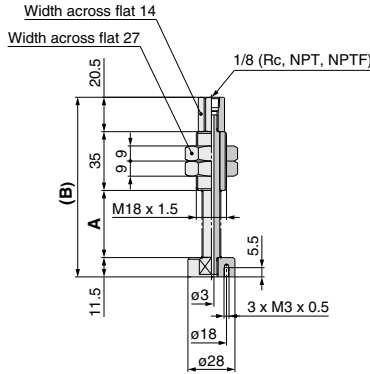
XT661

# Buffer Assembly Part No.

\* Refer to page 897 for nut tightening torque.

## Heavy-duty Buffer Assembly Part No. (Type T)

Buffer assembly part no.
Buffer body (Material: Aluminum alloy)
ZPB-T1J25-B01
ZPB-T1J25-N01
ZPB-T1J25-T01
ZPB-T1J50-B01
ZPB-T1J50-N01
ZPB-T1J50-T01
ZPB-T1J75-B01
ZPB-T1J75-N01
ZPB-T1J75-T01



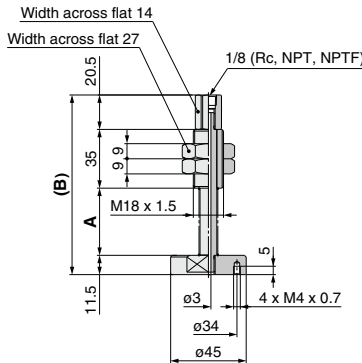
Applicable pad part no.
ZP40H□
ZP50H□
ZP40HB□
ZP50HB□
ZP2-40H□
ZP2-50H□
ZP2-3050HW□

### Dimensions

Model	A	B
ZPB-T1J25-□01	40	107
ZPB-T1J50-□01	75	142
ZPB-T1J75-□01	111	178

\* With three M3 bolts

Buffer assembly part no.
Buffer body (Material: Aluminum alloy)
ZPB-T2J25-B01
ZPB-T2J25-N01
ZPB-T2J25-T01
ZPB-T2J50-B01
ZPB-T2J50-N01
ZPB-T2J50-T01
ZPB-T2J75-B01
ZPB-T2J75-N01
ZPB-T2J75-T01



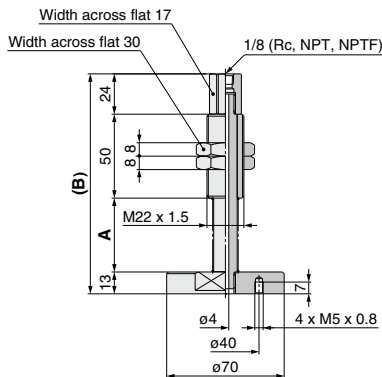
Applicable pad part no.
ZP63H□
ZP80H□
ZP63HB□
ZP80HB□
ZP2-63H□
ZP2-80H□

### Dimensions

Model	A	B
ZPB-T2J25-□01	40	107
ZPB-T2J50-□01	75	142
ZPB-T2J75-□01	111	178

\* With four M4 bolts

Buffer assembly part no.
Buffer body (Material: Aluminum alloy)
ZPB-T3J25-B01
ZPB-T3J25-N01
ZPB-T3J25-T01
ZPB-T3J50-B01
ZPB-T3J50-N01
ZPB-T3J50-T01
ZPB-T3J75-B01
ZPB-T3J75-N01
ZPB-T3J75-T01
ZPB-T3J100-B01
ZPB-T3J100-N01
ZPB-T3J100-T01



Applicable pad part no.
ZP100H□
ZP125H□
ZP100HB□
ZP125HB□
ZP2-100H□
ZP2-125H□

### Dimensions

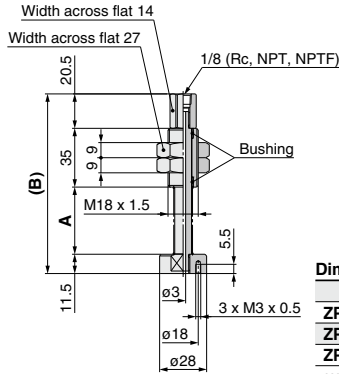
Model	A	B
ZPB-T3J25-□01	44	131
ZPB-T3J50-□01	80	167
ZPB-T3J75-□01	120	207
ZPB-T3J100-□01	155	242

\* With four M5 bolts

\* Refer to page 897 for nut tightening torque.

## Heavy-duty Buffer Assembly Part No. (Type T)

Buffer assembly part no.	
Buffer body (Material: Brass)	Buffer body (Material: Steel)
ZPB-T1JB25-B01	ZPB-T1JF25-B01
ZPB-T1JB25-N01	ZPB-T1JF25-N01
ZPB-T1JB25-T01	ZPB-T1JF25-T01
ZPB-T1JB50-B01	ZPB-T1JF50-B01
ZPB-T1JB50-N01	ZPB-T1JF50-N01
ZPB-T1JB50-T01	ZPB-T1JF50-T01
ZPB-T1JB75-B01	ZPB-T1JF75-B01
ZPB-T1JB75-N01	ZPB-T1JF75-N01
ZPB-T1JB75-T01	ZPB-T1JF75-T01



### Dimensions

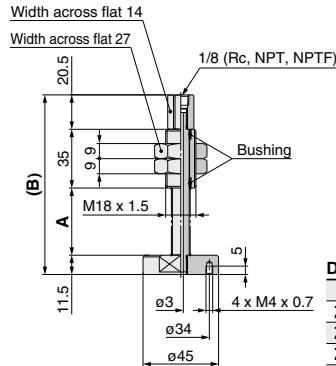
Model	A	B
ZPB-T1(JB/JF)25-□01	40	107
ZPB-T1(JB/JF)50-□01	75	142
ZPB-T1(JB/JF)75-□01	111	178

\* With three M3 bolts

### Applicable pad part no.

- ZP40H□
- ZP50H□
- ZP40HB□
- ZP50HB□
- ZP2-40H□
- ZP2-50H□
- ZP2-3050WH□

Buffer assembly part no.	
Buffer body (Material: Brass)	Buffer body (Material: Steel)
ZPB-T2JB25-B01	ZPB-T2JF25-B01
ZPB-T2JB25-N01	ZPB-T2JF25-N01
ZPB-T2JB25-T01	ZPB-T2JF25-T01
ZPB-T2JB50-B01	ZPB-T2JF50-B01
ZPB-T2JB50-N01	ZPB-T2JF50-N01
ZPB-T2JB50-T01	ZPB-T2JF50-T01
ZPB-T2JB75-B01	ZPB-T2JF75-B01
ZPB-T2JB75-N01	ZPB-T2JF75-N01
ZPB-T2JB75-T01	ZPB-T2JF75-T01



### Dimensions

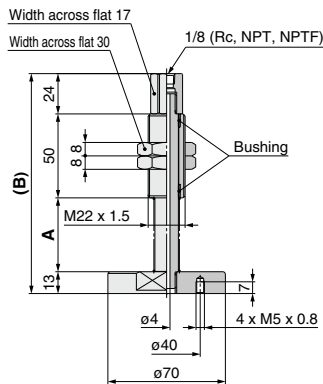
Model	A	B
ZPB-T2(JB/JF)25-□01	40	107
ZPB-T2(JB/JF)50-□01	75	142
ZPB-T2(JB/JF)75-□01	111	178

\* With four M4 bolts

### Applicable pad part no.

- ZP63H□
- ZP80H□
- ZP63HB□
- ZP80HB□
- ZP2-63H□
- ZP2-80H□

Buffer assembly part no.	
Buffer body (Material: Brass)	Buffer body (Material: Steel)
ZPB-T3JB25-B01	ZPB-T3JF25-B01
ZPB-T3JB25-N01	ZPB-T3JF25-N01
ZPB-T3JB25-T01	ZPB-T3JF25-T01
ZPB-T3JB50-B01	ZPB-T3JF50-B01
ZPB-T3JB50-N01	ZPB-T3JF50-N01
ZPB-T3JB50-T01	ZPB-T3JF50-T01
ZPB-T3JB75-B01	ZPB-T3JF75-B01
ZPB-T3JB75-N01	ZPB-T3JF75-N01
ZPB-T3JB75-T01	ZPB-T3JF75-T01
ZPB-T3JB100-B01	ZPB-T3JF100-B01
ZPB-T3JB100-N01	ZPB-T3JF100-N01
ZPB-T3JB100-T01	ZPB-T3JF100-T01



### Dimensions

Model	A	B
ZPB-T3(JB/JF)25-□01	44	131
ZPB-T3(JB/JF)50-□01	80	167
ZPB-T3(JB/JF)75-□01	120	207
ZPB-T3(JB/JF)100-□01	155	242

\* With four M5 bolts

### Applicable pad part no.

- ZP100H□
- ZP125H□
- ZP100HB□
- ZP125HB□
- ZP2-100H□
- ZP2-125H□

ZP3

ZP2

ZP2V

ZP

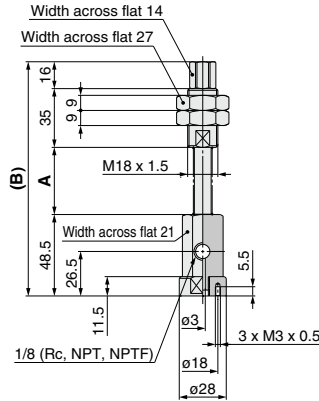
ZPT

ZPR

XT661

## Heavy-duty Buffer Assembly Part No. (Type X)

Buffer assembly part no.
Buffer body (Material: Aluminum alloy)
ZPB-X1J25-B01
ZPB-X1J25-N01
ZPB-X1J25-T01
ZPB-X1J50-B01
ZPB-X1J50-N01
ZPB-X1J50-T01
ZPB-X1J75-B01
ZPB-X1J75-N01
ZPB-X1J75-T01



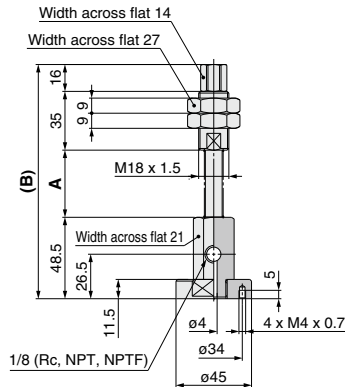
Applicable pad part no.
ZP40H□
ZP50H□
ZP40HB□
ZP50HB□
ZP2-40H□
ZP2-50H□

### Dimensions

Model	A	B
ZPB-X1J25-□01	40	139.5
ZPB-X1J50-□01	75	174.5
ZPB-X1J75-□01	111	210.5

\* With three M3 bolts

Buffer assembly part no.
Buffer body (Material: Aluminum alloy)
ZPB-X2J25-B01
ZPB-X2J25-N01
ZPB-X2J25-T01
ZPB-X2J50-B01
ZPB-X2J50-N01
ZPB-X2J50-T01
ZPB-X2J75-B01
ZPB-X2J75-N01
ZPB-X2J75-T01



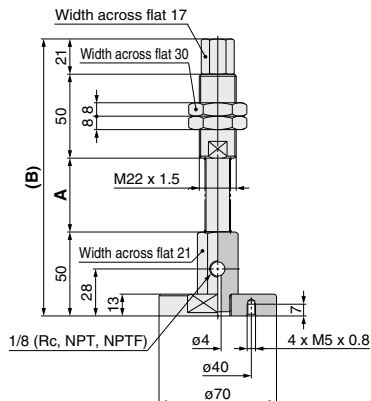
Applicable pad part no.
ZP63H□
ZP80H□
ZP63HB□
ZP80HB□
ZP2-63H□
ZP2-80H□

### Dimensions

Model	A	B
ZPB-X2J25-□01	40	139.5
ZPB-X2J50-□01	75	174.5
ZPB-X2J75-□01	111	210.5

\* With four M4 bolts

Buffer assembly part no.
Buffer body (Material: Aluminum alloy)
ZPB-X3J25-B01
ZPB-X3J25-N01
ZPB-X3J25-T01
ZPB-X3J50-B01
ZPB-X3J50-N01
ZPB-X3J50-T01
ZPB-X3J75-B01
ZPB-X3J75-N01
ZPB-X3J75-T01
ZPB-X3J100-B01
ZPB-X3J100-N01
ZPB-X3J100-T01



Applicable pad part no.
ZP100H□
ZP125H□
ZP100HB□
ZP125HB□
ZP2-100H□
ZP2-125H□

### Dimensions

Model	A	B
ZPB-X3J25-□01	44	165
ZPB-X3J50-□01	80	201
ZPB-X3J75-□01	120	241
ZPB-X3J100-□01	155	276

\* With four M5 bolts



\* Refer to page 897 for nut tightening torque.

## Heavy-duty Buffer Assembly Part No. (Type X)

Buffer assembly part no.			Applicable pad part no.
Buffer body (Material: Brass)	Buffer body (Material: Steel)		
ZPB-X1JB25-B01	ZPB-X1JF25-B01		ZP40H□
ZPB-X1JB25-N01	ZPB-X1JF25-N01		ZP50H□
ZPB-X1JB25-T01	ZPB-X1JF25-T01		ZP40HB□
ZPB-X1JB50-B01	ZPB-X1JF50-B01		ZP50HB□
ZPB-X1JB50-N01	ZPB-X1JF50-N01		ZP2-40H□
ZPB-X1JB50-T01	ZPB-X1JF50-T01		ZP2-50H□
ZPB-X1JB75-B01	ZPB-X1JF75-B01		
ZPB-X1JB75-N01	ZPB-X1JF75-N01		
ZPB-X1JB75-T01	ZPB-X1JF75-T01		

**Dimensions**

Model	A	B
ZPB-X1(JB/JF)25-□01	40	139.5
ZPB-X1(JB/JF)50-□01	75	174.5
ZPB-X1(JB/JF)75-□01	111	210.5

\* With three M3 bolts

Buffer assembly part no.			Applicable pad part no.
Buffer body (Material: Brass)	Buffer body (Material: Steel)		
ZPB-X2JB25-B01	ZPB-X2JF25-B01		ZP63H□
ZPB-X2JB25-N01	ZPB-X2JF25-N01		ZP80H□
ZPB-X2JB25-T01	ZPB-X2JF25-T01		ZP63HB□
ZPB-X2JB50-B01	ZPB-X2JF50-B01		ZP80HB□
ZPB-X2JB50-N01	ZPB-X2JF50-N01		ZP2-63H□
ZPB-X2JB50-T01	ZPB-X2JF50-T01		ZP2-80H□
ZPB-X2JB75-B01	ZPB-X2JF75-B01		
ZPB-X2JB75-N01	ZPB-X2JF75-N01		
ZPB-X2JB75-T01	ZPB-X2JF75-T01		

**Dimensions**

Model	A	B
ZPB-X2(JB/JF)25-□01	40	139.5
ZPB-X2(JB/JF)50-□01	75	174.5
ZPB-X2(JB/JF)75-□01	111	210.5

\* With four M4 bolts

Buffer assembly part no.			Applicable pad part no.
Buffer body (Material: Brass)	Buffer body (Material: Steel)		
ZPB-X3JB25-B01	ZPB-X3JF25-B01		ZP100H□
ZPB-X3JB25-N01	ZPB-X3JF25-N01		ZP125H□
ZPB-X3JB25-T01	ZPB-X3JF25-T01		ZP100HB□
ZPB-X3JB50-B01	ZPB-X3JF50-B01		ZP125HB□
ZPB-X3JB50-N01	ZPB-X3JF50-N01		ZP2-100H□
ZPB-X3JB50-T01	ZPB-X3JF50-T01		ZP2-125H□
ZPB-X3JB75-B01	ZPB-X3JF75-B01		
ZPB-X3JB75-N01	ZPB-X3JF75-N01		
ZPB-X3JB75-T01	ZPB-X3JF75-T01		
ZPB-X3JB100-B01	ZPB-X3JF100-B01		
ZPB-X3JB100-N01	ZPB-X3JF100-N01		
ZPB-X3JB100-T01	ZPB-X3JF100-T01		

**Dimensions**

Model	A	B
ZPB-X3(JB/JF)25-□01	44	165
ZPB-X3(JB/JF)50-□01	80	201
ZPB-X3(JB/JF)75-□01	120	241
ZPB-X3(JB/JF)100-□01	155	276

\* With four M5 bolts

ZP3

ZP2

ZP2V

ZP

ZPT

ZPR

XT661