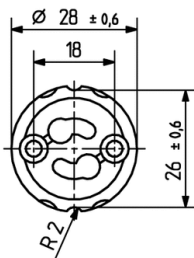
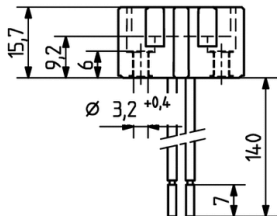


Lampholders for mains voltage halogen lamps

25.818.2901

GZ10



pkg. wt. part no.

500 16 g 25.818.2901.00

Connection: Rear cable entry
Wires: Cu. nickel, 0.75 mm², Insulation: PTFE (max. 250° C), with ferrule, Free cable length: 140 mm

Screw fixing
Housing: Ceramic / Mica plate
Contacts: Ni

- Other versions on request.

*25.818.2910 is a version of 25.818.2901.00, but with double insulated 150mm long cables.

T250

2 A
250 V