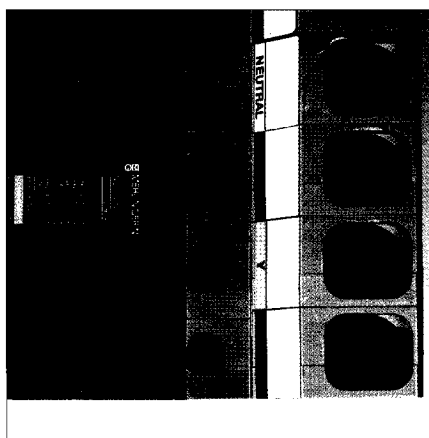
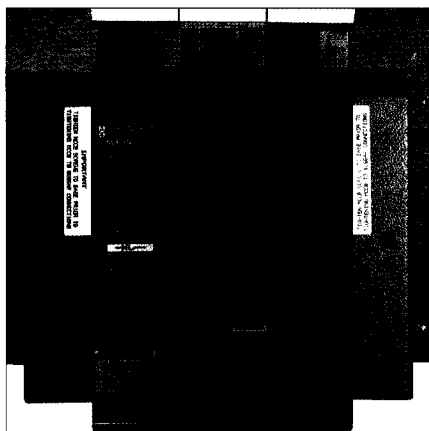


Powerpact 4 4 pole panelboards

incomers/outgoers



Technical data

- current ratings IEC 947-2 and BSEN 60947-2 16A to 630A at 40°C
- voltage ratings = 240/415V
- breaking capacity: see technical data page 152
- ICS = 100% ICU
- rated frequency 50/60Hz
- cable capacity: see technical data page 152
- suitable for use with motors: see technical data page 152
- for further technical data, use the Compact NS MCCB catalogue or consult us

Step 2. Select incomers

current rating (A)	direct connection	MCCB frame size	MCCB 3P	MCCB 4P	switch disconnecter 3P	switch disconnecter 4P
250	MGPINC	NS250	MGP2503	MGP2504	*MGP2503NA	MGP2504NA
400	MGPINC	NS400	*MGP4003	*MGP4004	*MGP4003NA	*MGP4004NA
630	MGPINC	NS630	*MGP6303	MGP6304	*MGP6303NA	*MGP6304NA

top entry version available - add suffix 'T' to above references

Step 3. Select outgoers

current rating (A)	MCCB frame size	SP	no. of SP ways used	3P	no. of SP ways used	4P	no. of SP ways used
16	NS100	MGP0161(1)	1	MGP0163	3	MGP0164	4
25	NS100	MGP0251(1)	1	*MGP0253	3	MGP0254	4
40	NS100	*MGP0401(1)	1	*MGP0403	3	MGP0404	4
63	NS100	*MGP0631(1)	1	*MGP0633	3	MGP0634	4
80	NS100	MGP0801(1)	1	MGP0803	3	MGP0804	4
100	NS100	*MGP1001(1)	1	*MGP1003	3	MGP1004	4
125	NS160	*MGP1251(1)	1	*MGP1253	3	MGP1254	4
160	NS160	MGP1601(1)	1	*MGP1603	3	MGP1604	4
200	NS250			MGP2003	3	MGP2004	4
250	NS250			*MGP2503	3	MGP2504	4
400	NS400			*MGP4003(2)	4	*MGP4004(2)	5
630	NS630			*MGP6303(2)	4	MGP6304(2)	5

(1) add suffix R, Y or B when selecting single pole MCCB's

(2) side extension boxes and shrouding kits (see page 111) must be fitted when using 400/630A MCCB's

(3) 400/630A devices supplied with terminal shield

disconnectable neutral link

current rating (A)		no. of SP ways used
100/250	MGP250NL	1
400/630	MGP630NL	1