



Model Number	Description	Notes
PPS500- AZ; PPS500- GR; PPS500-UK	Schneider Off Grid	

 		<p>Portable power station contains Lithium-Ion Battery, Each Lithium Ion Battery is more than 100 WH. Physical State: Solid.</p>
--	--	--

1.1 Batteries in Products

#	Model Number	Description	Notes
1	PPS500	Li-Ion Battery 14.76 V, 35 Ah, 517 Wh	

1.2 Cells in Batteries

#	Model Number	Description	Notes
2	INR21700M50LT	Lithium-ion Cell; 3.69 V; 4800 mAh	

2.0 Manufacturers of Cells/Batteries

2.1 Battery Maker #1

Name	Address	Phone	Website
Guangdong Greenway Technology Co., Ltd.	No.6, Tongsha Tonghuan Road, Dongcheng Street, Dongguan City, Guangdong Province, China	+86-17666257209	www.greenway-battery.com

2.1 Cell Maker #2

Name	Address	Phone	Website
LG Energy Solution, Ltd.	LG Energy Solution, Ltd. 188, Munji-ro, Yuseong-gu, Daejeon, 34122, Rep. of KOREA E-mail: juhongpark@lgensol.com	+82-10-7742-5427	www.lgensol.com

3.0 Test Laboratories of Cells / Batteries

3.1 Test for Battery #1

Name	Address	Phone	Website
Shenzhen TCT Testing Technology Co., Ltd.	2101、2201/2101 & 2201, Zhenchang Factory, Renshan Industrial Zone, Fuhai Subdistrict, Bao'an District, Shenzhen, Guangdong, China	400-6611-140	http://www.tct-lab.com
Model No.	PPS500-AZ	PPS500-GR	PPS500-UK
Test ID No:	TCT240925B0041	TCT240618B0601	TCT240925B0051
Date:	2024.09.27	2024.06.20	2024.09.27
NOTES: The sample has passed the test items of Manual of Tests and Criteria ST/SG/AC.10/11/Rev.7/Amend 1/Subsection 38.3			

	Lithium Ion Cell
XXX	Lithium Ion Battery

	Lithium Metal Cell
	Lithium Metal Battery

3.1 Test for Cell #2

Name	Address	Phone	Website
LG Energy Solution, Ltd.	188, Munji-ro, Yuseong-gu, Daejeon, 34122, Rep. of KOREA	+82-10-3099-3724	www.lgensol.com
Test ID No:	QDI-200514-C-INR21700M50LT		
Date:	2020.05.14		

XXX	Lithium Ion Cell
	Lithium Ion Battery

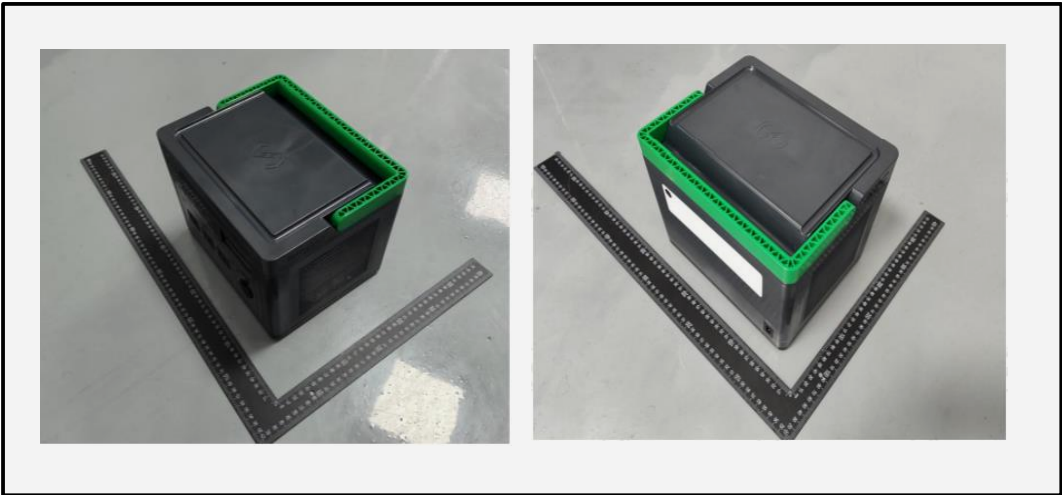
	Lithium Metal Cell
	Lithium Metal Battery

4.0 Parameters of Cells/Batteries

4.1 Battery #1

Parameters	Cell	Battery
Mass (Kg)	0.066783	1.90
Lithium ion Indicate watt-hour rating (Wh)	18.2	517
Lithium metal Indicate lithium metal content in gram (g)	N/A	N/A

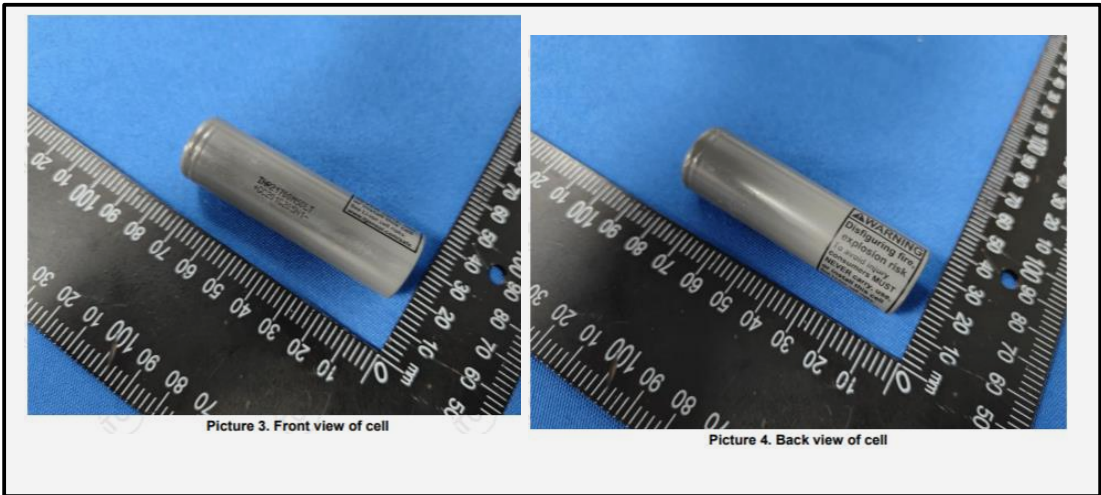
Physical Description of Cells / Batteries



PP330W Label

Schneider OffGrid	
Type/Taper	Portable Power Station
Model/Modèle	PPS500
Input/Entrée	
DC IN: 12.0-30.0V =10.0A	
AC IN: 120V~60Hz	
Output/Sortie	
AC Output/Sortie AC: 120V~60Hz 500W max	
DC Output/Sortie DC: Total 249W max	
USB-A x 3: 5.0V = 2.4A	
USB-C PD: 60W (5.0V = 3.0A, 9.0V = 3.0A, 12.0V = 3.0A, 15.0V = 3.0A, 20.0V = 3.0A)	
USB-C QC: 18W (5.0V = 3.0A, 9.0V = 2.0A, 12.0V = 1.5A)	
DC OUT: Car port & DC5521 port Total 120W max	
Car port: 12.0V = 10.0A	
DC5521 port x 2: 12.0V = 5.0A	
Wireless Charger/Chargeur sans fil: 15W	
Battery/Batterie	
Li-ion 14.76V = 517Wh	
Charge temperature/Température de charge: 0-40°C	
Discharge temperature/Température de décharge: -10-40°C	
WARNING:	
• Do not disassemble, crush, puncture, or short-circuit.	
• Do not expose the unit to fire, water, or excessive temperature.	
• Use specified charger only.	
• Read user manual before using this product.	
AVERTISSEMENT:	
• Ne pas démonter, écraser, percer ou court-circuiter.	
• Ne pas exposer l'appareil au feu, à l'eau ou à des températures excessives.	
• Utiliser uniquement le chargeur spécifié.	
• Lire le manuel d'utilisation avant d'utiliser ce produit.	

Cell (Cell #2)



5.0 List of tests conducted and results

Test	Pass	Fail	N/A
T1 – Altitude simulation	X		
T2 – Thermal Tests	X		
T3 – Vibration	X		
T4 – Shock	X		
T5 – External Short Circuit	X		
T6 – Impact	X		
T7 – Overcharge	X		
T8 – Forced Discharge	X		

6.0 UN38.3 Test Conformation for the Cells inside the battery:

	Cell UN 38.3 Test Confirmed (Yes or No)
When no separate document for the cells is provided, this confirms that the cells inside the battery have successfully passed the UN 38.3 test. In this case under section 5.0 the T7 and T8 must be marked as “passed” and here under section 6.0 “Cell UN 38.3 Test confirmed” needs to be Yes.	YES

7.0 Reference to assembled battery testing requirements

	Not Applicable
	XXX

8.0 Reference to the edition on the Manual of Tests and Criteria applied

ST/SG/AC.10/11/Rev.7/Amend.1

Recommendations on the Transport of Dangerous Goods: Manual of Tests and Criteria, Part III Sub-Section 38.3 Lithium metal and lithium-ion batteries United Nations

9.0 Manufacture of the cell / battery is in accordance with quality management system as required by the regulations:

Schneider Electric certifies that all articles described in this Test Survey are in compliance with all applicable Schneider Electric Product Specifications, Manufacturing Processes, Quality Control Testing, Quality Plan per ISO9001: 2015, and Environmental guidelines.

10.0 Certification

Company: Schneider Electric – Secure Power Division
Signature:



Authorized representative:

Raymond P. Lizotte, Jr.
Director, Sustainability Office
EMAIL: raymond.lizotte@SE.com
Phone: +1 978-691-1468

Date of compilation: November 16, 2023

Place of expertise: Schneider Electric Andover R&D Center
Andover, MA 01810
United States



Company Seal

11.0 Attachments

Images of Test Report Identifiers

锂电池 UN38.3 试验概要 Lithium Battery Test Summary

单位信息 Company Information			
委托单位 Consignor	美商艾比希股份有限公司台湾分公司/ American Power Conversion Holdings Inc., Taiwan Branch		
生产单位 Manufacturer	广东博力威科技股份有限公司/ Guangdong Greenway Technology Co., Ltd. 广东省东莞市东城街道同沙同欢路 6 号/ No. 6 Tongsha Tonghuan Road, Dongcheng Street, Dongguan, Guangdong. 电话/Tel: +86-17666257209 邮箱/Mail: LiXing@greenway-battery.com 网址/Website: www.greenway-battery.com		
测试单位 Test Lab	深圳市通测检测技术有限公司/Shenzhen TCT Testing Technology Co., Ltd. 广东省深圳市宝安区福海街道桥头社区稔山工业区振昌胶粘制品厂 2101、2201/2101 & 2201, Zhenchang Factory, Renshan Industrial Zone, Fuhai Subdistrict, Bao'an District, Shenzhen, Guangdong, China 电话/Tel: 400-6611-140 邮箱/Mail: service@tct-lab.com 网址/Website: http://www.tct-lab.com		
电池信息 Battery Information			
名称 Name	便携式储能电源 Portable Power Station	电池/电芯类别 Battery/Cell Classification	锂离子电池 Li-ion Battery
型号 Type	PPS500-AZ	商标 Trademark	
额定电压 Normal Voltage	14.76V	额定容量 Rated Capacity	35000mAh
额定能量 Watt-hour rating	517Wh	外观/Appearance	黑色长方体 Black Cuboid
质量/Mass	5.55Kg	锂含量/Li Content	不适用 N/A
测试信息 Test Information			
测试报告编号 Test Report Number	TCT240925B004-1	测试报告签发日期 Date of Test Report	2024. 09. 27
测试标准 Edition of UN Manual of Tests and Criteria Used	联合国《试验和标准手册》(第八修订版) 38.3 节 UN "Manual of Tests and Criteria" ST/SG/AC.10/11/Rev.8/Subsection 38.3.		
T.1: 高度模拟 Altitude Simulation	通过 Pass	T.2: 温度试验 Thermal Test	通过 Pass
T.4: 冲击 Shock	通过 Pass	T.5: 外部短路 External Short Circuit	通过 Pass
T.7: 过度充电 Overcharge	通过 Pass	T.8: 强制放电 Forced Discharge	通过 Pass
UN38.3.3(f)	不适用 N/A	UN38.3.3(g)	不适用 N/A
签名 Signatory	Cherry Huang 黄新玲	签发日期 Issued Date	2024. 09. 27
职务 Title	检验员		



锂电池 UN38.3 试验概要 Lithium Battery Test Summary

项目编号: PEKSZ2022

单位信息 Company Information			
委托单位 Consignor	美商艾比希股份有限公司台湾分公司/ American Power Conversion Holdings Inc., Taiwan Branch		
生产单位 Manufacturer	广东博力威科技股份有限公司/ Guangdong Greenway Technology Co., Ltd. 广东省东莞市东城街道同沙同欢路 6 号/ No. 6 Tongsha Tonghuan Road, Dongcheng Street, Dongguan, Guangdong. 电话/Tel: +86-17666257209 邮箱/Mail: LiXing@greenway-battery.com 网址/Website: www.greenway-battery.com		
测试单位 Test Lab	深圳市通测检测技术有限公司/Shenzhen TCT Testing Technology Co., Ltd. 广东省深圳市宝安区福海街道桥头社区稔山工业区振昌胶粘制品厂 2101、2201/2101 & 2201, Zhenchang Factory, Renshan Industrial Zone, Fuhai Subdistrict, Bao'an District, Shenzhen, Guangdong, China 电话/Tel: 400-6611-140 邮箱/Mail: service@tct-lab.com 网址/Website: http://www.tct-lab.com		
电池信息 Battery Information			
名称 Name	便携式储能电源 Portable Power Station	电池/电芯类别 Battery/Cell Classification	锂离子电池 Li-ion Battery
型号 Type	PPS500-GR	商标 Trademark	
额定电压 Normal Voltage	14.76V	额定容量 Rated Capacity	35000mAh
额定能量 Watt-hour rating	517Wh	外观/Appearance	黑色长方体 Black Cuboid
质量/Mass	5.55Kg	锂含量/Li Content	不适用 N/A
测试信息 Test Information			
测试报告编号 Test Report Number	TCT240618B060-1	测试报告签发日期 Date of Test Report	2024. 06. 20
测试标准 Edition of UN Manual of Tests and Criteria Used	联合国《试验和标准手册》(第八修订版) 38.3 节 UN "Manual of Tests and Criteria" ST/SG/AC.10/11/Rev.8/Subsection 38.3.		
T.1: 高度模拟 Altitude Simulation	通过 Pass	T.2: 温度试验 Thermal Test	通过 Pass
T.4: 冲击 Shock	通过 Pass	T.5: 外部短路 External Short Circuit	通过 Pass
T.7: 过度充电 Overcharge	通过 Pass	T.8: 强制放电 Forced Discharge	通过 Pass
UN38.3.3(f)	不适用 N/A	UN38.3.3(g)	不适用 N/A
签名 Signatory	Cherry Huang 黄新玲	签发日期 Issued Date	2024. 06. 20
职务 Title	检验员		



锂电池 UN38.3 试验概要 Lithium Battery Test Summary

单位信息 Company Information			
委托单位 Consignor	美商艾比希股份有限公司台湾分公司/ American Power Conversion Holdings Inc., Taiwan Branch		
生产单位 Manufacturer	广东博力威科技股份有限公司/ Guangdong Greenway Technology Co., Ltd. 广东省东莞市东城街道同沙同欢路 6 号/ No. 6 Tongsha Tonghuan Road, Dongcheng Street, Dongguan, Guangdong. 电话/Tel: +86-17666257209 邮箱/Mail: LiXing@greenway-battery.com 网址/Website: www.greenway-battery.com		
测试单位 Test Lab	深圳市通测检测技术有限公司/Shenzhen TCT Testing Technology Co., Ltd. 广东省深圳市宝安区福海街道桥头社区稔山工业区振昌胶粘制品厂 2101、2201/2101 & 2201, Zhenchang Factory, Renshan Industrial Zone, Fuhai Subdistrict, Bao'an District, Shenzhen, Guangdong, China 电话/Tel: 400-6611-140 邮箱/Mail: service@tct-lab.com 网址/Website: http://www.tct-lab.com		
电池信息 Battery Information			
名称 Name	便携式储能电源 Portable Power Station	电池/电芯类别 Battery/Cell Classification	锂离子电池 Li-ion Battery
型号 Type	PPS500-UK	商标 Trademark	
额定电压 Normal Voltage	14.76V	额定容量 Rated Capacity	35000mAh
额定能量 Watt-hour rating	517Wh	外观/Appearance	黑色长方体 Black Cuboid
质量/Mass	5.55Kg	锂含量/Li Content	不适用 N/A
测试信息 Test Information			
测试报告编号 Test Report Number	TCT240925B005-1	测试报告签发日期 Date of Test Report	2024. 09. 27
测试标准 Edition of UN Manual of Tests and Criteria Used	联合国《试验和标准手册》(第八修订版) 38.3 节 UN "Manual of Tests and Criteria" ST/SG/AC.10/11/Rev.8/Subsection 38.3.		
T.1: 高度模拟 Altitude Simulation	通过 Pass	T.2: 温度试验 Thermal Test	通过 Pass
T.4: 冲击 Shock	通过 Pass	T.5: 外部短路 External Short Circuit	通过 Pass
T.7: 过度充电 Overcharge	通过 Pass	T.8: 强制放电 Forced Discharge	通过 Pass
UN38.3.3(f)	不适用 N/A	UN38.3.3(g)	不适用 N/A
签名 Signatory	Cherry Huang 黄新玲	签发日期 Issued Date	2024. 09. 27
职务 Title	检验员		

