



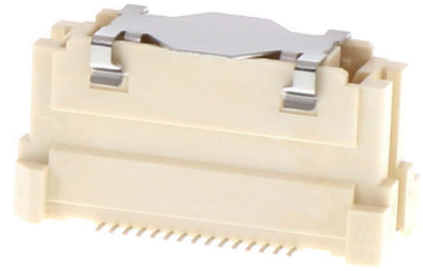
Part Number : [529010374](#)

Product Description : SlimStack Board-to-Board Connector, 0.635mm Pitch, 0.635 Series, Receptacle, 12.00 to 16.00mm Mated Height, 6.40mm Mated Width, with Vacuum Pick-Up Area, 30 Circuits

Series Number : 52901

Status : Active

Product Category : Board-to-Board Connectors



Documents & Resources

Drawings

[529010374 sd.pdf](#)

3D Models and Design Files

[STEP AP242](#)

[SOLIDWORKS](#)

[Creo](#)

[Symbol and Footprint \(Multi-Format\)](#)


Specifications

[SPK-52901-001-001.pdf](#)

[527600000-000.pdf](#)

Product Environment Compliance

Compliance

GADSL/IMDS	Compliant with Exemption 44; 33
China RoHS	 per SJ/T 11365-2006
EU ELV	Not Relevant
Low-Halogen Status	Low-Halogen per IEC 61249-2-21
REACH SVHC	Not Contained per D(2025)4165-DC (25 June 2025)
EU RoHS	Compliant per EU 2015/863

[Compliance Statements](#)

- EU RoHS
- REACH SVHC
- Low-Halogen

Industry Documents

- IPC 1752A Class C
- IPC 1752A Class D
- Molex Product Compliance Declaration
- IEC-62474
- chemSHERPA (xml)

Substances of Interest

- PFAS

EU RoHS Certificate of Compliance

Additional Product Compliance Information

Part Details

General

Status	Active
Category	Board-to-Board Connectors
Series	0.635, Rigid
Description	SlimStack Board-to-Board Connector, 0.635mm Pitch, 0.635 Series, Receptacle, 12.00 to 16.00mm Mated Height, 6.40mm Mated Width, with Vacuum Pick-Up Area, 30 Circuits
Application	Board-to-Board, Signal
Comments	Stacking-Type
Component Type	PCB Receptacle
Product Name	SlimStack
UPC	822348176519

Agency

UL	E29179
----	--------

Electrical

Current - Maximum per Contact	0.5A
Voltage - Maximum	100V

Physical

Circuits (Loaded)	30
Circuits (maximum)	30
Color - Resin	White
Durability (mating cycles max)	50
Glow-Wire Capable	No
Lock to Mating Part	Yes
Mated Height	12.00mm, 13.00mm, 14.00mm, 15.00mm, 16.00mm
Mated Width	6.40mm
Material - Metal	Copper Alloy
Material - Plating Mating	Gold
Material - Plating Termination	Tin
Material - Resin	High Temperature Thermoplastic
Net Weight	949.696/mg
Number of Rows	2
Orientation	Vertical
Packaging Type	Embossed Tape on Reel
PCB Locator	Yes
PCB Retention	Yes
PCB Thickness - Recommended	1.00mm min
Pitch - Mating Interface	0.635mm
Polarized to PCB	Yes
Robotic Placement	Vacuum Pick-Up Area
Temperature Range - Operating	-55° to +105°C
Termination Interface Style	Surface Mount

Mates With / Use With

Mates with Part(s)

Description	Part Number
0.635mm Pitch Vertical SlimStack Plugs	<u>53625</u>
0.635mm Pitch Vertical SlimStack Plugs	<u>53627</u>
0.635mm Pitch Vertical SlimStack	

Plugs	<u>53647</u>
0.635mm Pitch Vertical SlimStack Plugs	<u>53649</u>
0.635mm Vertical SlimStack Plugs	<u>55091</u>