

	ITEM N°	PART N°	DESCRIPTION	MATERIAL	N° OFF
	①	M919/3-13/1-1	PUNCH.	MS	1.
Ⓐ	②	B2	SPECIAL BOLT	MS	1.
	③	M919/3-13/1-3	LOCATION PLATE	MS	1.
	④	/ STD	MSX-8 SOCKET HEAD CAP SCREW. 25MM LONG		2.
	⑤	M919/3-13/3-2	DIE	MS	1.
Ⓑ	⑥	W1	SPECIAL WASHER	MS	1.
	⑦	/ STD	3MM WASHER FORM 'B'	MS	1.
Ⓒ	⑧	N2	SPECIAL NUT	MS	1.

Size:-19.3x13.1mm. RECTANGULAR HOLE CUTTER.
SINGLE POLE ROCKER SWITCH No 332-262.



MANUFORM

ALTERATIONS AND NOTES

DO NOT SCALE

27-11-86.
Ⓐ PART N° B2 WAS 1140/4
Ⓑ PART N° W1 WAS 1140/10
Ⓒ PART N° N2 WAS 1139/4
DATE CHANGE NOTE No ISSUE
5-11-90 1024 3.



SCALE:-1:1.

Sheet 1 of 2.

© **MANUFORM**
from whom
permission must first be
obtained before any
article is produced from or
copy made of this drawing

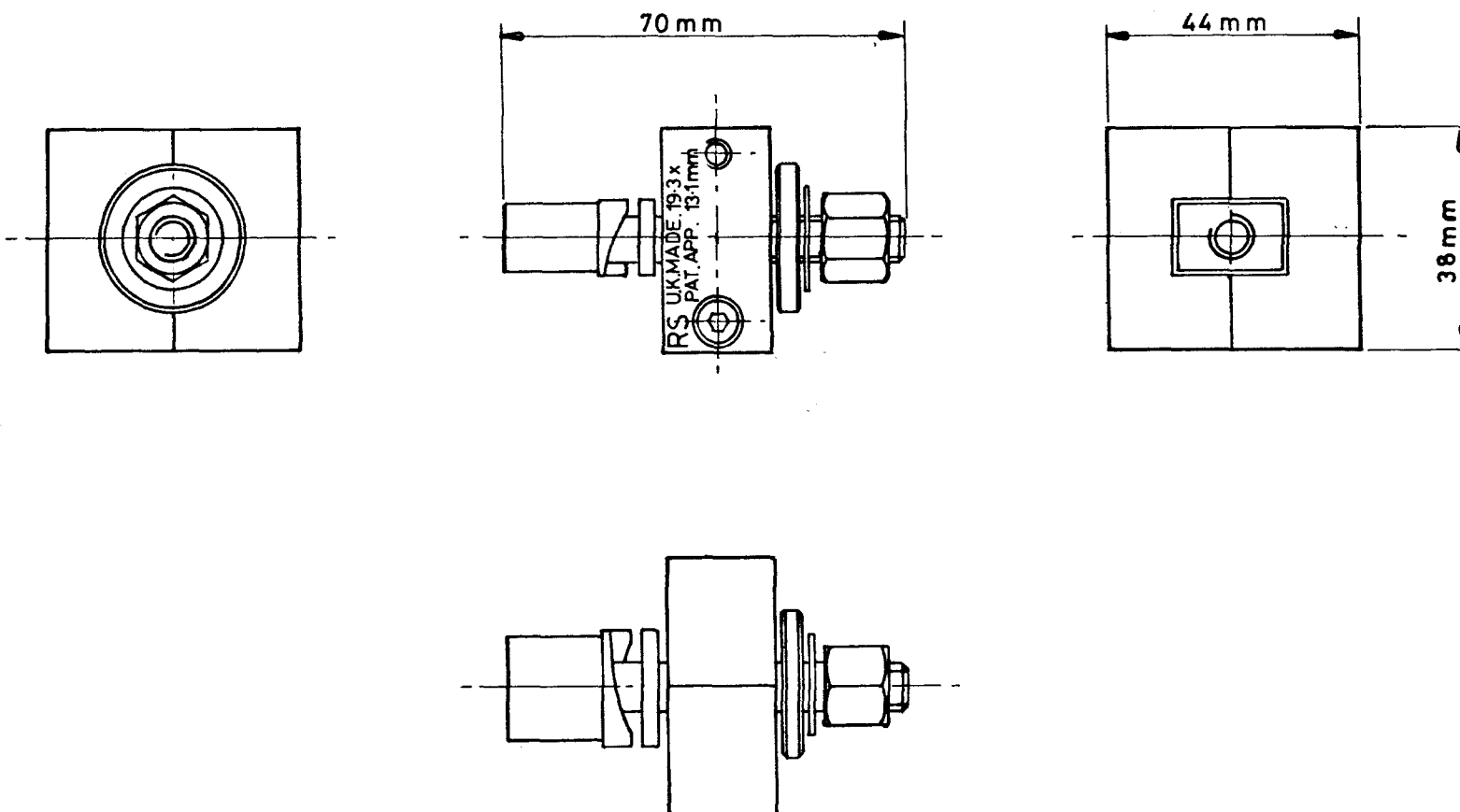
DATE
6-11-84.

DRAWN
LBM.

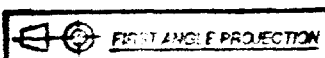
MATERIAL

DRG. No. **M919/3-13/1.**
PART No.

DRG. No. M 919/3—13/1
PART No.



19.3 x 13.1 mm RECTANGULAR HOLE CUTTER.
SINGLE POLE ROCKER SWITCH No 332-262.



CAUSER GRAPHICS 5673/84

GENERAL TOLERANCE :- \pm / mm.
(UNLESS STATED) (\pm / ").

FUTTERS (LONDON) LTD.

ALTERATIONS AND NOTES

DO NOT SCALE

DATE, CHANGE NOTE No. ISSU
1-11-90, ——— 1.



SCALE:- ———

SHEET 2 OF 2

© Copyright FUTTERS (London) Ltd., from whom permission must first be obtained before any article is produced from or copy made of this drawing.

DATE 1—11—90

DRAWN J. R. K.

MATERIAL

DRG. No. M 919/3—13/1
PART No.