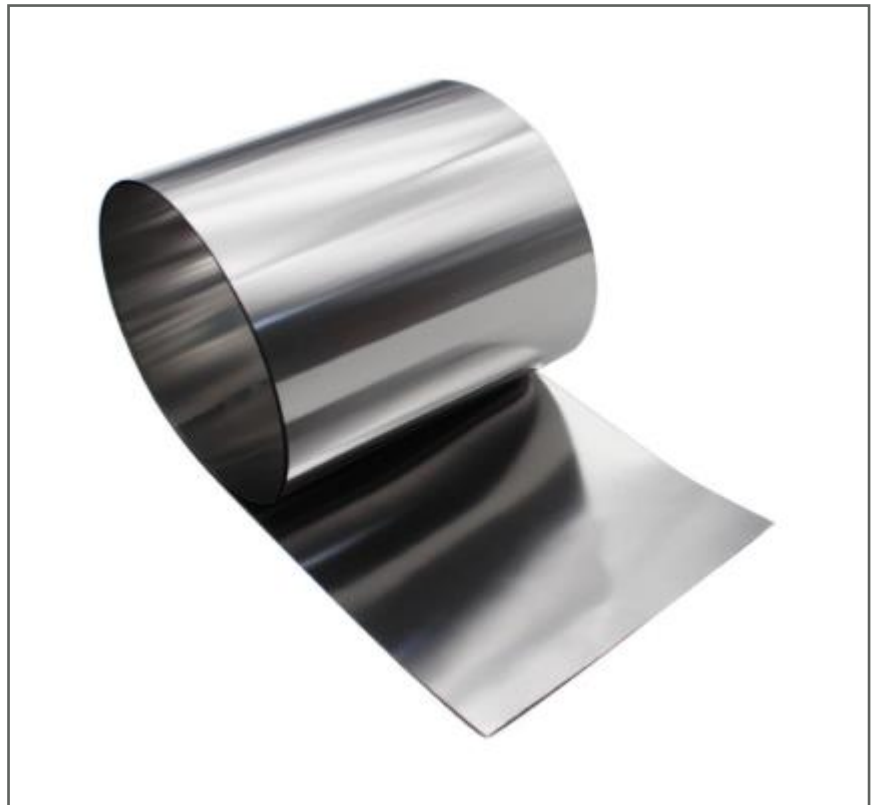


Features

- **Packaging:** Supplied in a durable can in order to maintain the material's flatness and protect against corrosion.
- **Corrosion and rust resistant.** It offers high resistance to rust and corrosion, making it suitable for various industrial applications and harsh environments.
- **Durable** and long-lasting.
- Suitable for **precision adjustments** and alignment in machinery, tool and die set up, and machine repair/maintenance.
- Offers good resistance to oxidation in continuous service up to approximately 1600°F (871°C). However, exposure to high temperatures (above 400°C) will remove the benefits of the cold working, returning it to properties similar to an annealed state.

RS PRO STAINLESS (SHIM IN A CAN) L:1250MM X W:150MM X T:0.25MM

RS Stock No: 0767814



RS PRO is the own brand of RS. The RS PRO Seal of Approval is your assurance of professional quality, a guarantee that every part is rigorously tested, inspected, and audited against demanding standards. Making RS PRO the Smart Choice for our customers.

Product Description

RS PRO Precision Stainless Steel "Shim in a Can"

RS PRO Precision Stainless Steel "Shim in a Can" is a full hard, cold-rolled Type 300 series stainless steel material known for its excellent corrosion resistance and high tensile strength. The shim is supplied as a single sheet but is typically supplied in a can for ease of storage.

Key Features:

- **Material Grade:** *Stainless Steel Type 300 Series Full Hard (equivalent to AISI-T301, meeting AMS 5519 and ASTM A666 specifications).*
- **Temper:** *Full Hard condition, achieved through cold working rather than heat treatment.*
- **High Strength:** *Known for its high ultimate tensile strength and yield strength, ideal for applications requiring robust materials.*
- **Hardness:** *Rockwell Hardness C40-45.*

Applications:

- *Level surfaces in industrial and mechanical applications.*
- *Aligning and levelling pumps, motors, and other heavy machinery.*
- *Spacing for fasteners and securing bolts in construction.*
- *Adjusting tool and die sets during manufacturing.*
- *Machine Repair - Used to fill small gaps*

General Specifications

| | |
|-----------------|---|
| Material | Stainless Steel Type 300 Series Full Hard |
| Form | Shim in a Can |

| | |
|-----------|--------|
| Length | 1250MM |
| Width | 150MM |
| Thickness | 0.25MM |

Mechanical Properties

| | |
|----------------------|-------------------------------|
| Tensile Strength | 170,000 psi minimum |
| Hardness | Rockwell Hardness C40-45 |
| Density | 7.9 to 8.03 g/cm ³ |
| Yield Strength | 140,000 psi minimum |
| Thermal Conductivity | ~51.9 W/m·K |
| Elongation in 2" | 2% min |

Approvals

| | |
|---------------------------|--------------------------------------|
| Compliance/Certifications | SAE-30302, AISI-T302, and ASTM A-666 |
|---------------------------|--------------------------------------|

Similar Products

| RS Code | Form | Thickness |
|---------|----------|--|
| 0767807 | CAN | 0.10MM |
| 0767808 | CAN | 0.20MM |
| 0767809 | ASSORTED | 0.05MM, 0.10MM, 0.15MM, 0.20MM, 0.25MM, 0.30MM, 0.40MM, 0.50MM |
| 0767811 | CAN | 0.30MM |
| 0767812 | BOX | 0.50MM |
| 0767813 | CAN | 0.05MM |
| 0767815 | BOX | 0.40MM |
| 0767816 | CAN | 0.15MM |
| 0767817 | BOX | 0.80MM |
| 0767818 | BOX | 0.65MM |
| 0767819 | CAN | 0.010" |
| 0767820 | CAN | 0.003" |
| 0767821 | CAN | 0.005" |
| 0767822 | CAN | 0.002" |
| 0767823 | ASSORTED | 0.001", 0.002", 0.003", 0.005", 0.008", 0.010", 0.015", 0.020" |
| 0767824 | CAN | 0.008" |
| 0767825 | BOX | 0.015" |

| | | |
|---------|-----|--------|
| 0767827 | CAN | 0.004" |
| 0767828 | BOX | 0.020" |
| 0767806 | CAN | 0.001" |