

ME-IO 18,8 B/FE 10U TBUS 7035 - Mounting base housing



2202507

<https://www.phoenixcontact.com/in/products/2202507>

Please be informed that the data shown in this PDF document is generated from our online catalog. Please find the complete data in the user documentation. Our general terms of use for downloads are valid.



DIN rail housing, Lower housing part with metal foot catch, with vents, width: 18.9 mm, height: 120.6 mm, depth: 64.3 mm, color: light gray (similar RAL 7035), cross connection: DIN rail connector (optional), number of positions cross connector: 5 or 8

Your advantages

- Easy, tool-free mounting
- Optional DIN rail connector for easy module-to-module communication
- Lock and Release principle for automatic latching and intuitive release of the front connection plug
- Plastic in accordance with UL94 V0: for more rigorous flammability requirements
- Integrated FE contact for simple electromagnetically compatible installation
- L-design: ideal for flush integration of standard interfaces such as RJ45

Commercial data

Item number	2202507
Packing unit	10 pc
Minimum order quantity	10 pc
Sales key	ACH
Product key	ACHEBA
GTIN	4055626199214
Weight per piece (including packing)	37.14 g
Weight per piece (excluding packing)	22.22 g
Customs tariff number	85389099
Country of origin	DE

ME-IO 18,8 B/FE 10U TBUS 7035 - Mounting base housing



2202507

<https://www.phoenixcontact.com/in/products/2202507>

Technical data

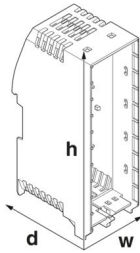
Notes

Assembly note	Please observe the application note in the download area.
Recommendation	Material of contact pads for bus connector, galvanic gold (hard gold)

Product properties

Product type	Enclosure bottom part
Housing type	DIN rail housing
Housing series	ME-IO
Max. number of positions	48 (pitch: 3.45 mm) 32 (pitch: 5 mm)
Type	Lower housing part with metal foot catch
Ventilation openings present	yes

Dimensions

Dimensional drawing	
Width	18.9 mm
Height	120.6 mm
Depth	64.3 mm
Depth from top edge of DIN rail	57.7 mm

PCB design

PCB thickness	1.4 mm ... 1.8 mm
---------------	-------------------

Material specifications

Color (Housing)	light gray (RAL 7035)
Flammability rating according to UL 94	V0
CTI according to IEC 60112	600
Housing material	PA
Surface characteristics	untreated

Environmental and real-life conditions

Power dissipation single housing for 20 °C

Ambient temperature	20 °C
Reduction factor	1

ME-IO 18,8 B/FE 10U TBUS 7035 - Mounting base housing



2202507

<https://www.phoenixcontact.com/in/products/2202507>

Mounting position	vertical
Power dissipation	9.2 W

Power dissipation single housing for 30 °C

Ambient temperature	30 °C
Reduction factor	0.81
Mounting position	vertical
Power dissipation	7.5 W

Power dissipation single housing for 40 °C

Ambient temperature	40 °C
Reduction factor	0.63
Mounting position	vertical
Power dissipation	5.8 W

Power dissipation single housing for 50 °C

Ambient temperature	50 °C
Reduction factor	0.46
Mounting position	vertical
Power dissipation	4.3 W

Power dissipation single housing for 60 °C

Ambient temperature	60 °C
Reduction factor	0.31
Mounting position	vertical
Power dissipation	2.9 W

Vibration test

Specification	IEC 60068-2-6:2007-12
Frequency	10 - 150 - 10 Hz
Sweep speed	1 octave/min
Amplitude	0.15 mm (10 Hz ... 58.1 Hz)
Acceleration	2g (58.1 Hz ... 150 Hz)
Test duration per axis	2.5 h
Test directions	X-, Y- and Z-axis

Glow-wire test

Specification	IEC 60695-2-11:2014-02
Temperature	850 °C
Time of exposure	30 s

Thermal stability / ball thrust test

Specification	IEC 60695-10-2:2014-02
Temperature	125 °C
Test duration	1 h
Force	20 N

Mechanical strength / tumbling barrel

ME-IO 18,8 B/FE 10U TBUS 7035 - Mounting base housing



2202507

<https://www.phoenixcontact.com/in/products/2202507>

Specification	IEC 60068-2-31:2008-05
Height of fall	50 cm
Frequency	50

Shocks

Specification	IEC 60068-2-27:2008-02
Pulse shape	Semi-sinusoidal
Acceleration	15g
Shock duration	11 ms
Number of shocks per direction	3
Test directions	X-, Y- and Z-axis (pos. and neg.)

Test for substances that would hinder coating with paint or varnish

Specification	VDMA 24364:2018-05
---------------	--------------------

Degree of protection (IP code)

Specification	IEC 60529:1989-11 + AMD 1:1999-11 + AMD 2:2013-08
---------------	---

Ambient conditions

Max. IP code to attain	IP20
Ambient temperature (operation)	-40 °C ... 105 °C (depending on power dissipation)
Ambient temperature (storage/transport)	-40 °C ... 55 °C
Ambient temperature (assembly)	-5 °C ... 100 °C
Relative humidity (storage/transport)	80 %

PCB data

Number of PCB holders	1
Type of PCB mount	Latching
Total PCB surface	6500 mm ²
Thickness of the PCB	1.4 mm ... 1.8 mm

Mounting

Mounting type	DIN rail mounting
---------------	-------------------

Packaging specifications

Type of packaging	packed in cardboard
Outer packaging type	Carton

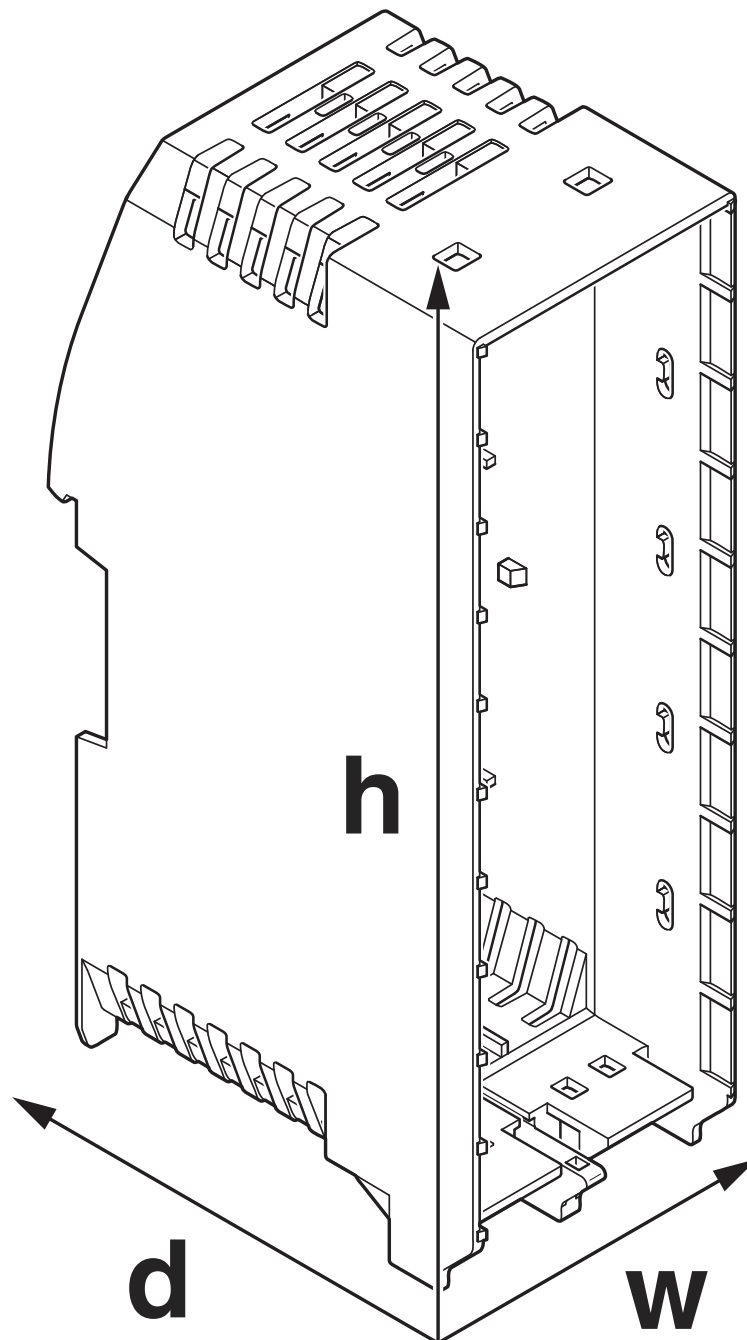
ME-IO 18,8 B/FE 10U TBUS 7035 - Mounting base housing

2202507

<https://www.phoenixcontact.com/in/products/2202507>

Drawings

Dimensional drawing



Schematic figure for illustrating the item dimensions. The figure is not of the desired product. For further details, refer to the product drawings in the "Downloads" tab.

ME-IO 18,8 B/FE 10U TBUS 7035 - Mounting base housing



2202507

<https://www.phoenixcontact.com/in/products/2202507>

Approvals

🔗 To download certificates, visit the product detail page: <https://www.phoenixcontact.com/in/products/2202507>



UL Recognized

Approval ID: E240868

ME-IO 18,8 B/FE 10U TBUS 7035 - Mounting base housing



2202507

<https://www.phoenixcontact.com/in/products/2202507>

Classifications

ECLASS

ECLASS-11.0	27182702
ECLASS-13.0	27190601

ETIM

ETIM 9.0	EC002779
----------	----------

UNSPSC

UNSPSC 21.0	31261500
-------------	----------

ME-IO 18,8 B/FE 10U TBUS 7035 - Mounting base housing



2202507
<https://www.phoenixcontact.com/in/products/2202507>

Environmental product compliance

EU RoHS	
Fulfills EU RoHS substance requirements	Yes, No exemptions
China RoHS	
Environment friendly use period (EFUP)	EFUP-E
	No hazardous substances above the limits
EU REACH SVHC	
REACH candidate substance (CAS No.)	No substance above 0.1 wt%

ME-IO 18,8 B/FE 10U TBUS 7035 - Mounting base housing



2202507

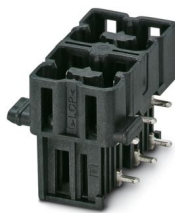
<https://www.phoenixcontact.com/in/products/2202507>

Mandatory accessories

HSCH 2,5-2U-2220 THR 9005 - PCB header

1091994

<https://www.phoenixcontact.com/in/products/1091994>

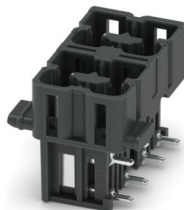


PCB headers, nominal cross section: 2.5 mm², color: black, nominal current: 8 A, rated voltage (III/2): 250 V, contact surface: Sn, contact connection type: Pin, number of rows: 2, mounting: THR soldering, number of solder pins per potential: 1, plug-in system: HSC 2,5, Pin connector pattern alignment: Standard, locking: without, mounting method: without, Partially assembled version

HSCH 2,5-2U-TT22 THR 9005 - PCB header

1091997

<https://www.phoenixcontact.com/in/products/1091997>



PCB headers, nominal cross section: 2.5 mm², color: black, nominal current: 8 A, rated voltage (III/2): 250 V, contact surface: Sn, contact connection type: Pin, number of rows: 2, mounting: THR soldering, number of solder pins per potential: 1, plug-in system: HSC 2,5, Pin connector pattern alignment: Standard, locking: without, mounting method: without, Partially assembled version

ME-IO 18,8 B/FE 10U TBUS 7035 - Mounting base housing



2202507

<https://www.phoenixcontact.com/in/products/2202507>

HSCH 2,5-2U-TTTT THR 9005 - PCB header

1091998

<https://www.phoenixcontact.com/in/products/1091998>

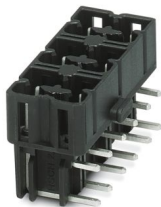


PCB headers, nominal cross section: 2.5 mm², color: black, nominal current: 8 A, rated voltage (III/2): 250 V, contact surface: Sn, contact connection type: Pin, number of rows: 2, mounting: THR soldering, number of solder pins per potential: 1, plug-in system: HSC 2,5, Pin connector pattern alignment: Standard, locking: without, mounting method: without, Partially assembled version

HSCH 2,5-3U-TT22TT 9005 - PCB header

1548074

<https://www.phoenixcontact.com/in/products/1548074>



PCB headers, nominal cross section: 2.5 mm², color: black, nominal current: 8 A, rated voltage (III/2): 320 V, contact surface: Sn, contact connection type: Pin, number of rows: 2, number of positions: 8, product range: HSCH 2,5/..-G, pitch: 5 mm, mounting: Wave soldering, pin layout: Linear pinning, solder pin [P]: 3.8 mm, number of solder pins per potential: 1, plug-in system: HSC 2,5, Pin connector pattern alignment: Standard, locking: without, mounting method: without, type of packaging: packed in cardboard, Partially assembled version

ME-IO 18,8 B/FE 10U TBUS 7035 - Mounting base housing



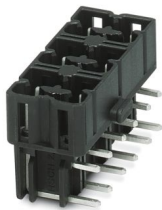
2202507

<https://www.phoenixcontact.com/in/products/2202507>

HSCH 2,5-2U-0222 9005 - PCB header

1720508

<https://www.phoenixcontact.com/in/products/1720508>



PCB headers, nominal cross section: 2.5 mm², color: black, nominal current: 8 A, rated voltage (III/2): 320 V, contact surface: Sn, contact connection type: Pin, number of potentials: 6, number of rows: 2, number of positions: 6, number of connections: 6, product range: HSCH 2,5/..-G, pitch: 5 mm, mounting: Wave soldering, pin layout: Mixed pinning, solder pin [P]: 3.8 mm, number of solder pins per potential: 1, plug-in system: HSC 2,5, Pin connector pattern alignment: Standard, locking: without, mounting method: without, type of packaging: packed in cardboard, Partially assembled version

HSCH 2,5-2U-2002 9005 - PCB header

1734745

<https://www.phoenixcontact.com/in/products/1734745>



PCB headers, nominal cross section: 2.5 mm², color: black, nominal current: 8 A, rated voltage (III/2): 320 V, contact surface: Sn, contact connection type: Pin, number of potentials: 4, number of rows: 2, number of positions: 4, number of connections: 4, product range: HSCH 2,5/..-G, pitch: 5 mm, mounting: Wave soldering, pin layout: Mixed pinning, solder pin [P]: 3.8 mm, number of solder pins per potential: 1, plug-in system: HSC 2,5, Pin connector pattern alignment: Standard, locking: without, mounting method: without, type of packaging: packed in cardboard, Partially assembled version

ME-IO 18,8 B/FE 10U TBUS 7035 - Mounting base housing



2202507

<https://www.phoenixcontact.com/in/products/2202507>

HSCH 2,5-2U-0022 9005 - PCB header

1734746

<https://www.phoenixcontact.com/in/products/1734746>



PCB headers, nominal cross section: 2.5 mm², color: black, nominal current: 8 A, rated voltage (III/2): 320 V, contact surface: Sn, contact connection type: Pin, number of potentials: 4, number of rows: 2, number of positions: 4, number of connections: 4, product range: HSCH 2,5/..-G, pitch: 5 mm, mounting: Wave soldering, pin layout: Mixed pinning, solder pin [P]: 3.8 mm, number of solder pins per potential: 1, plug-in system: HSC 2,5, Pin connector pattern alignment: Standard, locking: without, mounting method: without, type of packaging: packed in cardboard, Partially assembled version

HSCH 2,5-2U-0202 9005 - PCB header

1734747

<https://www.phoenixcontact.com/in/products/1734747>



PCB headers, nominal cross section: 2.5 mm², color: black, nominal current: 8 A, rated voltage (III/2): 320 V, contact surface: Sn, contact connection type: Pin, number of potentials: 4, number of rows: 2, number of positions: 4, number of connections: 4, product range: HSCH 2,5/..-G, pitch: 5 mm, mounting: Wave soldering, pin layout: Mixed pinning, solder pin [P]: 3.8 mm, number of solder pins per potential: 1, plug-in system: HSC 2,5, Pin connector pattern alignment: Standard, locking: without, mounting method: without, type of packaging: packed in cardboard, Partially assembled version

ME-IO 18,8 B/FE 10U TBUS 7035 - Mounting base housing



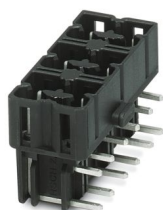
2202507

<https://www.phoenixcontact.com/in/products/2202507>

HSCH 2,5-3U/12 9005 - PCB header

2201788

<https://www.phoenixcontact.com/in/products/2201788>



PCB headers, nominal cross section: 2.5 mm², color: black, nominal current: 8 A, rated voltage (III/2): 320 V, contact surface: Sn, contact connection type: Pin, number of potentials: 12, number of rows: 2, number of positions: 12, number of connections: 12, product range: HSCH 2,5/...-G, pitch: 5 mm, mounting: Wave soldering, pin layout: Linear pinning, solder pin [P]: 3.8 mm, number of solder pins per potential: 1, plug-in system: HSC 2,5, Pin connector pattern alignment: Standard, locking: without, mounting method: without, type of packaging: packed in cardboard

HSCH 2,5-2U/ 8 9005 - PCB header

2201789

<https://www.phoenixcontact.com/in/products/2201789>



PCB headers, nominal cross section: 2.5 mm², color: black, nominal current: 8 A, rated voltage (III/2): 320 V, contact surface: Sn, contact connection type: Pin, number of potentials: 8, number of rows: 2, number of positions: 8, number of connections: 8, product range: HSCH 2,5/...-G, pitch: 5 mm, mounting: Wave soldering, pin layout: Linear pinning, solder pin [P]: 3.8 mm, number of solder pins per potential: 1, plug-in system: HSC 2,5, Pin connector pattern alignment: Standard, locking: without, mounting method: without, type of packaging: packed in cardboard

ME-IO 18,8 B/FE 10U TBUS 7035 - Mounting base housing



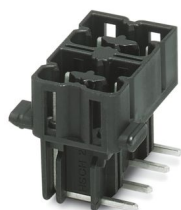
2202507

<https://www.phoenixcontact.com/in/products/2202507>

HSCH 2,5-2U-TTTT 9005 - PCB header

2201790

<https://www.phoenixcontact.com/in/products/2201790>



PCB headers, nominal cross section: 2.5 mm², color: black, nominal current: 8 A, rated voltage (III/2): 320 V, contact surface: Sn, contact connection type: Pin, number of potentials: 4, number of rows: 2, number of positions: 4, number of connections: 4, product range: HSCH 2,5/..-G, pitch: 5 mm, mounting: Wave soldering, pin layout: Linear pinning, solder pin [P]: 3.8 mm, number of solder pins per potential: 1, plug-in system: HSC 2,5, Pin connector pattern alignment: Standard, locking: without, mounting method: without, type of packaging: packed in cardboard, Partially assembled version

HSCH 2,5-2U-2220 9005 - PCB header

2201792

<https://www.phoenixcontact.com/in/products/2201792>



PCB headers, nominal cross section: 2.5 mm², color: black, nominal current: 8 A, rated voltage (III/2): 320 V, contact surface: Sn, contact connection type: Pin, number of potentials: 6, number of rows: 2, number of positions: 6, number of connections: 6, product range: HSCH 2,5/..-G, pitch: 5 mm, mounting: Wave soldering, pin layout: Mixed pinning, solder pin [P]: 3.8 mm, number of solder pins per potential: 1, plug-in system: HSC 2,5, Pin connector pattern alignment: Standard, locking: without, mounting method: without, type of packaging: packed in cardboard, Partially assembled version

ME-IO 18,8 B/FE 10U TBUS 7035 - Mounting base housing



2202507

<https://www.phoenixcontact.com/in/products/2202507>

HSCH 2,5-2U-TT02 9005 - PCB header

2201793

<https://www.phoenixcontact.com/in/products/2201793>



PCB headers, nominal cross section: 2.5 mm², color: black, nominal current: 8 A, rated voltage (III/2): 320 V, contact surface: Sn, contact connection type: Pin, number of potentials: 4, number of rows: 2, number of positions: 4, number of connections: 4, product range: HSCH 2,5/..-G, pitch: 5 mm, mounting: Wave soldering, pin layout: Mixed pinning, solder pin [P]: 3.8 mm, number of solder pins per potential: 1, plug-in system: HSC 2,5, Pin connector pattern alignment: Standard, locking: without, mounting method: without, type of packaging: packed in cardboard, Partially assembled version

HSCH 2,5-2U/ 8 THR 9005 - PCB header

2203405

<https://www.phoenixcontact.com/in/products/2203405>



PCB headers, nominal cross section: 2.5 mm², color: black, nominal current: 8 A, rated voltage (III/2): 250 V, contact surface: Sn, contact connection type: Pin, number of potentials: 8, number of rows: 2, number of positions: 8, number of connections: 8, product range: HSCH 2,5/..-G-THR, pitch: 5 mm, mounting: THR soldering, pin layout: Linear pinning, solder pin [P]: 2.3 mm, number of solder pins per potential: 1, plug-in system: HSC 2,5, Pin connector pattern alignment: Standard, locking: without, mounting method: without, type of packaging: 44 mm wide tape

ME-IO 18,8 B/FE 10U TBUS 7035 - Mounting base housing



2202507

<https://www.phoenixcontact.com/in/products/2202507>

HSCH 2,5-3U/12 THR 9005 - PCB header

2203406

<https://www.phoenixcontact.com/in/products/2203406>



PCB headers, nominal cross section: 2.5 mm², color: black, nominal current: 8 A, rated voltage (III/2): 250 V, contact surface: Sn, contact connection type: Pin, number of potentials: 12, number of rows: 2, number of positions: 12, number of connections: 12, product range: HSCH 2,5/...-G-THR, pitch: 5 mm, mounting: THR soldering, pin layout: Linear pinning, solder pin [P]: 2.3 mm, number of solder pins per potential: 1, plug-in system: HSC 2,5, Pin connector pattern alignment: Standard, locking: without, mounting method: without, type of packaging: 56 mm wide tape

HSCH 2,5-2U/ 8 9005 VPE150 - PCB header

2203617

<https://www.phoenixcontact.com/in/products/2203617>



PCB headers, nominal cross section: 2.5 mm², color: black, nominal current: 8 A, rated voltage (III/2): 320 V, contact surface: Sn, contact connection type: Pin, number of potentials: 8, number of rows: 2, number of positions: 8, number of connections: 8, product range: HSCH 2,5/...-G, pitch: 5 mm, mounting: Wave soldering, pin layout: Linear pinning, solder pin [P]: 3.8 mm, number of solder pins per potential: 1, plug-in system: HSC 2,5, Pin connector pattern alignment: Standard, locking: without, mounting method: without, type of packaging: packed in cardboard

ME-IO 18,8 B/FE 10U TBUS 7035 - Mounting base housing



2202507

<https://www.phoenixcontact.com/in/products/2202507>

HSCH 2,5-2U-TTTT 9005 VPE150 - PCB header

2203618

<https://www.phoenixcontact.com/in/products/2203618>



PCB headers, nominal cross section: 2.5 mm², color: black, nominal current: 8 A, rated voltage (III/2): 320 V, contact surface: Sn, contact connection type: Pin, number of rows: 2, number of positions: 4, product range: HSCH 2,5/..-G, pitch: 5 mm, mounting: Wave soldering, pin layout: Linear pinning, solder pin [P]: 3.8 mm, number of solder pins per potential: 1, plug-in system: HSC 2,5, Pin connector pattern alignment: Standard, locking: without, mounting method: without, type of packaging: packed in cardboard, Partially assembled version

HSCH 2,5-2U-TT22 9005 - PCB header

2203783

<https://www.phoenixcontact.com/in/products/2203783>



PCB headers, nominal cross section: 2.5 mm², color: black, nominal current: 8 A, rated voltage (III/2): 320 V, contact surface: Sn, contact connection type: Pin, number of potentials: 6, number of rows: 2, number of positions: 6, number of connections: 6, product range: HSCH 2,5/..-G, pitch: 5 mm, mounting: Wave soldering, pin layout: Mixed pinning, solder pin [P]: 3.8 mm, number of solder pins per potential: 1, plug-in system: HSC 2,5, Pin connector pattern alignment: Standard, locking: without, mounting method: without, type of packaging: packed in cardboard, Partially assembled version

ME-IO 18,8 B/FE 10U TBUS 7035 - Mounting base housing



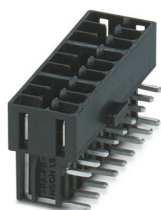
2202507

<https://www.phoenixcontact.com/in/products/2202507>

HSCH 1,5-3U/18 9005 - PCB header

2202232

<https://www.phoenixcontact.com/in/products/2202232>

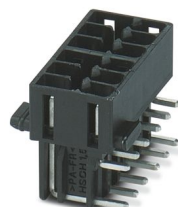


PCB headers, nominal cross section: 1.5 mm², color: black, nominal current: 8 A, rated voltage (III/2): 160 V, contact surface: Sn, contact connection type: Pin, number of potentials: 18, number of rows: 2, number of positions: 18, number of connections: 18, product range: HSCH 1,5/...-G, pitch: 3.45 mm, mounting: Wave soldering, pin layout: Linear pinning, solder pin [P]: 3.8 mm, number of solder pins per potential: 1, plug-in system: HSC 1,5, Pin connector pattern alignment: Standard, locking: without, mounting method: without, type of packaging: packed in cardboard

HSCH 1,5-2U/12 9005 - PCB header

2202233

<https://www.phoenixcontact.com/in/products/2202233>



PCB headers, nominal cross section: 1.5 mm², color: black, nominal current: 8 A, rated voltage (III/2): 160 V, contact surface: Sn, contact connection type: Pin, number of potentials: 12, number of rows: 2, number of positions: 12, number of connections: 12, product range: HSCH 1,5/...-G, pitch: 3.45 mm, mounting: Wave soldering, pin layout: Linear pinning, solder pin [P]: 3.8 mm, number of solder pins per potential: 1, plug-in system: HSC 1,5, Pin connector pattern alignment: Standard, locking: without, mounting method: without, type of packaging: packed in cardboard

ME-IO 18,8 B/FE 10U TBUS 7035 - Mounting base housing



2202507

<https://www.phoenixcontact.com/in/products/2202507>

HSCH 1,5-3U/18 THR 9005 - PCB header

2203408

<https://www.phoenixcontact.com/in/products/2203408>



PCB headers, nominal cross section: 1.5 mm², color: black, nominal current: 8 A, rated voltage (III/2): 160 V, contact surface: Sn, contact connection type: Pin, number of potentials: 18, number of rows: 2, number of positions: 18, number of connections: 18, product range: HSCH 1,5/...-G-THR, pitch: 3.45 mm, mounting: THR soldering, pin layout: Linear pinning, solder pin [P]: 2.3 mm, number of solder pins per potential: 1, plug-in system: HSC 1,5, Pin connector pattern alignment: Standard, locking: without, mounting method: without, type of packaging: 56 mm wide tape

HSCH 1,5-2U/12 THR 9005 - PCB header

2203409

<https://www.phoenixcontact.com/in/products/2203409>



PCB headers, nominal cross section: 1.5 mm², color: black, nominal current: 8 A, rated voltage (III/2): 160 V, contact surface: Sn, contact connection type: Pin, number of potentials: 12, number of rows: 2, number of positions: 12, number of connections: 12, product range: HSCH 1,5/...-G-THR, pitch: 3.45 mm, mounting: THR soldering, pin layout: Linear pinning, solder pin [P]: 2.3 mm, number of solder pins per potential: 1, plug-in system: HSC 1,5, Pin connector pattern alignment: Standard, locking: without, mounting method: without, type of packaging: 44 mm wide tape

ME-IO 18,8 B/FE 10U TBUS 7035 - Mounting base housing



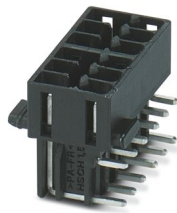
2202507

<https://www.phoenixcontact.com/in/products/2202507>

HSCH 1,5-2U/12 9005 VPE150 - PCB header

2203619

<https://www.phoenixcontact.com/in/products/2203619>



PCB headers, nominal cross section: 1.5 mm², color: black, nominal current: 8 A, rated voltage (III/2): 160 V, contact surface: Sn, contact connection type: Pin, number of potentials: 12, number of rows: 2, number of positions: 12, number of connections: 12, product range: HSCH 1,5/...-G, pitch: 3.45 mm, mounting: Wave soldering, pin layout: Linear pinning, solder pin [P]: 3.8 mm, number of solder pins per potential: 1, plug-in system: HSC 1,5, Pin connector pattern alignment: Standard, locking: without, mounting method: without, type of packaging: packed in cardboard

Accessories

ME-IO P 10U 7035 - Separating plate

2202629

<https://www.phoenixcontact.com/in/products/2202629>



DIN rail housing, Insulation plate, Housing cover, width: 2.69 mm, height: 112.2 mm, depth: 28.5 mm, color: light gray (similar RAL 7035)

ME-IO 18,8 B/FE 10U TBUS 7035 - Mounting base housing



2202507

<https://www.phoenixcontact.com/in/products/2202507>

ME-IO P 10U 7016 - Separating plate

1209229

<https://www.phoenixcontact.com/in/products/1209229>



DIN rail housing, Insulation plate, Housing cover, width: 2.89 mm, height: 112.2 mm, depth: 28.5 mm, color: anthracite grey (similar RAL 7016)

HSCP-SP 2,5-1U4-99/99-3000 - PCB connector

1003852

<https://www.phoenixcontact.com/in/products/1003852>



PCB connector, nominal cross section: 2.5 mm², color: flame red, nominal current: 8 A, rated voltage (III/2): 320 V, contact surface: Sn, contact connection type: Socket, number of potentials: 4, number of rows: 2, number of positions: 4, number of connections: 4, product range: HSCP-SP 2,5-..., pitch: 5 mm, connection method: Push-in spring connection, conductor/PCB connection direction: 0 °, locking clip: - Locking clip, plug-in system: HSC 2,5, locking: without, mounting method: without, type of packaging: packed in cardboard, Color of the spring levers: white, white / white, white

ME-IO 18,8 B/FE 10U TBUS 7035 - Mounting base housing



2202507

<https://www.phoenixcontact.com/in/products/2202507>

HSCP-SP 2,5-1U4-33/33-7016 - PCB connector

1037429

<https://www.phoenixcontact.com/in/products/1037429>



PCB connector, nominal cross section: 2.5 mm², color: anthracite grey, nominal current: 8 A, rated voltage (III/2): 320 V, contact surface: Sn, contact connection type: Socket, number of potentials: 4, number of rows: 2, number of positions: 4, number of connections: 4, product range: HSCP-SP 2,5-..., pitch: 5 mm, connection method: Push-in spring connection, conductor/PCB connection direction: 0 °, locking clip: - Locking clip, plug-in system: HSC 2,5, locking: without, mounting method: without, type of packaging: packed in cardboard, Color of the spring lever: orange

HSCP-SP 2,5-1U4-09/53-7035 - PCB connector

1037438

<https://www.phoenixcontact.com/in/products/1037438>



PCB connector, nominal cross section: 2.5 mm², color: light gray, nominal current: 8 A, rated voltage (III/2): 320 V, contact surface: Sn, contact connection type: Socket, number of potentials: 4, number of rows: 2, number of positions: 4, number of connections: 4, product range: HSCP-SP 2,5-..., pitch: 5 mm, connection method: Push-in spring connection, conductor/PCB connection direction: 0 °, locking clip: - Locking clip, plug-in system: HSC 2,5, locking: without, mounting method: without, type of packaging: packed in cardboard, Color of the spring levers: black, white/green, orange

ME-IO 18,8 B/FE 10U TBUS 7035 - Mounting base housing



2202507

<https://www.phoenixcontact.com/in/products/2202507>

HSCP-SP 2,5-1U02-7035 - PCB connector

1081099

<https://www.phoenixcontact.com/in/products/1081099>



PCB connector, nominal cross section: 2.5 mm², color: light gray, nominal current: 8 A, rated voltage (III/2): 320 V, contact surface: Sn, contact connection type: Socket, number of potentials: 2, number of rows: 2, number of positions: 2, number of connections: 2, product range: HSCP-SP 2,5-..., pitch: 5 mm, connection method: Push-in spring connection, conductor/PCB connection direction: 0 °, locking clip: - Locking clip, plug-in system: HSC 2,5, locking: without, mounting method: without, type of packaging: packed in cardboard, Partially assembled version

HSCP-SP 2,5-1U4-62/62-7035 - PCB connector

1081107

<https://www.phoenixcontact.com/in/products/1081107>



PCB connector, nominal cross section: 2.5 mm², color: light gray, nominal current: 8 A, rated voltage (III/2): 320 V, contact surface: Sn, contact connection type: Socket, number of potentials: 4, number of rows: 2, number of positions: 4, number of connections: 4, product range: HSCP-SP 2,5-..., pitch: 5 mm, connection method: Push-in spring connection, conductor/PCB connection direction: 0 °, locking clip: - Locking clip, plug-in system: HSC 2,5, locking: without, mounting method: without, type of packaging: packed in cardboard, Spring opener color: blue, red/blue, red

ME-IO 18,8 B/FE 10U TBUS 7035 - Mounting base housing



2202507

<https://www.phoenixcontact.com/in/products/2202507>

HSCP-SP 2,5-1U4-24/24-7035 - PCB connector

1088581

<https://www.phoenixcontact.com/in/products/1088581>



PCB connector, nominal cross section: 2.5 mm², color: light gray, nominal current: 8 A, rated voltage (III/2): 320 V, contact surface: Sn, contact connection type: Socket, number of potentials: 4, number of rows: 2, number of positions: 4, number of connections: 4, product range: HSCP-SP 2,5-..., pitch: 5 mm, connection method: Push-in spring connection, conductor/PCB connection direction: 0 °, locking clip: - Locking clip, plug-in system: HSC 2,5, locking: without, mounting method: without, type of packaging: packed in cardboard, Color of the spring levers: red, yellow / red, yellow

HSCP-SP 2,5-1U4-56/56-7035 - PCB connector

1088582

<https://www.phoenixcontact.com/in/products/1088582>



PCB connector, nominal cross section: 2.5 mm², color: light gray, nominal current: 8 A, rated voltage (III/2): 320 V, contact surface: Sn, contact connection type: Socket, number of potentials: 4, number of rows: 2, number of positions: 4, number of connections: 4, product range: HSCP-SP 2,5-..., pitch: 5 mm, connection method: Push-in spring connection, conductor/PCB connection direction: 0 °, locking clip: - Locking clip, plug-in system: HSC 2,5, locking: without, mounting method: without, type of packaging: packed in cardboard, Color of the spring levers: green, blue / green, blue

ME-IO 18,8 B/FE 10U TBUS 7035 - Mounting base housing



2202507

<https://www.phoenixcontact.com/in/products/2202507>

HSCP-SP 2,5-1U20-5B/5B-7035 - PCB connector

1106784

<https://www.phoenixcontact.com/in/products/1106784>



PCB connector, nominal cross section: 2.5 mm², color: light gray, nominal current: 8 A, rated voltage (III/2): 320 V, contact surface: Sn, contact connection type: Socket, number of potentials: 2, number of rows: 2, number of positions: 2, number of connections: 2, product range: HSCP-SP 2,5-..., pitch: 5 mm, connection method: Push-in spring connection, conductor/PCB connection direction: 0 °, locking clip: - Locking clip, plug-in system: HSC 2,5, locking: without, mounting method: without, type of packaging: packed in cardboard, Partially assembled version

HSCP-SP 2,5-1U4-55/66-7035 - PCB connector

1111838

<https://www.phoenixcontact.com/in/products/1111838>



PCB connector, nominal cross section: 2.5 mm², color: light gray, nominal current: 8 A, rated voltage (III/2): 320 V, contact surface: Sn, contact connection type: Socket, number of potentials: 4, number of rows: 2, number of positions: 4, number of connections: 4, product range: HSCP-SP 2,5-..., pitch: 5 mm, connection method: Push-in spring connection, conductor/PCB connection direction: 0 °, locking clip: - Locking clip, plug-in system: HSC 2,5, locking: without, mounting method: without, type of packaging: packed in cardboard, Color of the spring levers: green, green/blue, blue

ME-IO 18,8 B/FE 10U TBUS 7035 - Mounting base housing



2202507

<https://www.phoenixcontact.com/in/products/2202507>

HSCP-SP 2,5-1U4-22/44-7035 - PCB connector

1111839

<https://www.phoenixcontact.com/in/products/1111839>



PCB connector, nominal cross section: 2.5 mm², color: light gray, nominal current: 8 A, rated voltage (III/2): 320 V, contact surface: Sn, contact connection type: Socket, number of potentials: 4, number of rows: 2, number of positions: 4, number of connections: 4, product range: HSCP-SP 2,5-..., pitch: 5 mm, connection method: Push-in spring connection, conductor/PCB connection direction: 0 °, locking clip: - Locking clip, plug-in system: HSC 2,5, locking: without, mounting method: without, type of packaging: packed in cardboard, Color of the spring levers: red, red/yellow, yellow

HSCP-SP 2,5-1UTT-02/02-7035 - PCB connector

1135246

<https://www.phoenixcontact.com/in/products/1135246>



PCB connector, nominal cross section: 2.5 mm², color: light gray, nominal current: 8 A, rated voltage (III/2): 320 V, contact surface: Sn, contact connection type: Socket, number of potentials: 2, number of rows: 2, number of positions: 2, number of connections: 4, product range: HSCP-SP 2,5-..., pitch: 5 mm, connection method: Push-in spring connection, conductor/PCB connection direction: 0 °, locking clip: - Locking clip, plug-in system: HSC 2,5, locking: without, mounting method: without, type of packaging: packed in cardboard, Color of the spring levers: black, red / black, red

ME-IO 18,8 B/FE 10U TBUS 7035 - Mounting base housing



2202507

<https://www.phoenixcontact.com/in/products/2202507>

HSCP-SP 2,5-1U4-09/06-7035 - PCB connector

1194411

<https://www.phoenixcontact.com/in/products/1194411>



PCB connector, nominal cross section: 2.5 mm², color: light gray, nominal current: 8 A, rated voltage (III/2): 320 V, contact surface: Sn, contact connection type: Socket, number of potentials: 4, number of rows: 2, number of positions: 4, number of connections: 4, product range: HSCP-SP 2,5-..., pitch: 5 mm, connection method: Push-in spring connection, conductor/PCB connection direction: 0 °, locking clip: - Locking clip, plug-in system: HSC 2,5, locking: without, mounting method: without, type of packaging: packed in cardboard, Color of the spring levers: black, white / black, blue

HSCP-SP 2,5-1U00-7016 - Filler plug

1205130

<https://www.phoenixcontact.com/in/products/1205130>



PCB connector, nominal cross section: 2.5 mm², color: anthracite grey, nominal current: 8 A, rated voltage (III/2): 300 V, number of potentials: 0, number of rows: 2, number of positions: 0, number of connections: 0, product range: HSCP-SP 2,5-..., pitch: 5 mm, number of solder pins per potential: 0, locking clip: - Locking clip, plug-in system: HSC 2,5, locking: without, mounting method: without, Filler plugs

ME-IO 18,8 B/FE 10U TBUS 7035 - Mounting base housing



2202507

<https://www.phoenixcontact.com/in/products/2202507>

HSCP-SP 2,5-1UTT-7016 - PCB connector

1209685

<https://www.phoenixcontact.com/in/products/1209685>



PCB connector, nominal cross section: 2.5 mm², color: anthracite grey, nominal current: 8 A, rated voltage (III/2): 320 V, contact surface: Sn, contact connection type: Socket, number of potentials: 2, number of rows: 2, number of positions: 2, number of connections: 4, product range: HSCP-SP 2,5-..., pitch: 5 mm, connection method: Push-in spring connection, conductor/PCB connection direction: 0 °, locking clip: - Locking clip, plug-in system: HSC 2,5, locking: without, mounting method: without, type of packaging: packed in cardboard, Color of the spring lever: orange

HSCP-SP 2,5-1U4-99/99-9005 - PCB connector

1211074

<https://www.phoenixcontact.com/in/products/1211074>



PCB connector, nominal cross section: 2.5 mm², color: black, nominal current: 8 A, rated voltage (III/2): 320 V, contact surface: Sn, contact connection type: Socket, number of potentials: 4, number of rows: 2, number of positions: 4, number of connections: 4, product range: HSCP-SP 2,5-..., pitch: 5 mm, connection method: Push-in spring connection, conductor/PCB connection direction: 0 °, locking clip: - Locking clip, plug-in system: HSC 2,5, locking: without, mounting method: without, type of packaging: packed in cardboard, Color of the spring levers: white

ME-IO 18,8 B/FE 10U TBUS 7035 - Mounting base housing



2202507

<https://www.phoenixcontact.com/in/products/2202507>

HSCP-SP 2,5-1U4-00/22-9005 - PCB connector

1211075

<https://www.phoenixcontact.com/in/products/1211075>



PCB connector, nominal cross section: 2.5 mm², color: black, nominal current: 8 A, rated voltage (III/2): 320 V, contact surface: Sn, contact connection type: Socket, number of potentials: 4, number of rows: 2, number of positions: 4, number of connections: 4, product range: HSCP-SP 2,5-..., pitch: 5 mm, connection method: Push-in spring connection, conductor/PCB connection direction: 0 °, locking clip: - Locking clip, plug-in system: HSC 2,5, locking: without, mounting method: without, type of packaging: packed in cardboard, Color of the spring levers: black, black / red, red

HSCP-SP 2,5-1U4-62/62-9005 - PCB connector

1487511

<https://www.phoenixcontact.com/in/products/1487511>



PCB connector, nominal cross section: 2.5 mm², color: black, nominal current: 8 A, rated voltage (III/2): 320 V, contact surface: Sn, contact connection type: Socket, number of potentials: 4, number of rows: 2, number of positions: 4, number of connections: 4, product range: HSCP-SP 2,5-..., pitch: 5 mm, connection method: Push-in spring connection, conductor/PCB connection direction: 0 °, locking clip: - Locking clip, plug-in system: HSC 2,5, locking: without, mounting method: without, type of packaging: packed in cardboard, Spring opener color: blue, red/blue, red

ME-IO 18,8 B/FE 10U TBUS 7035 - Mounting base housing



2202507

<https://www.phoenixcontact.com/in/products/2202507>

HSCP-SP 2,5-1U4-5015 - PCB connector

1493474

<https://www.phoenixcontact.com/in/products/1493474>



PCB connector, nominal cross section: 2.5 mm², color: blue, nominal current: 8 A, rated voltage (III/2): 320 V, contact surface: Sn, contact connection type: Socket, number of potentials: 4, number of rows: 2, number of positions: 4, number of connections: 4, product range: HSCP-SP 2,5-..., pitch: 5 mm, connection method: Push-in spring connection, conductor/PCB connection direction: 0 °, locking clip: - Locking clip, plug-in system: HSC 2,5, locking: without, mounting method: without, type of packaging: packed in cardboard, Color of the spring lever: orange

HSCP-SP 2,5-1U00-5015 - Filler plug

1493476

<https://www.phoenixcontact.com/in/products/1493476>



PCB connector, nominal cross section: 2.5 mm², color: light gray, nominal current: 8 A, rated voltage (III/2): 300 V, number of potentials: 0, number of rows: 2, number of positions: 0, number of connections: 0, product range: HSCP-SP 2,5-..., pitch: 5 mm, number of solder pins per potential: 0, locking clip: - Locking clip, plug-in system: HSC 2,5, locking: without, mounting method: without, type of packaging: packed in cardboard, Filler plugs

ME-IO 18,8 B/FE 10U TBUS 7035 - Mounting base housing



2202507

<https://www.phoenixcontact.com/in/products/2202507>

HSCP-SP 2,5-1UTT-5015 - PCB connector

1497099

<https://www.phoenixcontact.com/in/products/1497099>



PCB connector, nominal cross section: 2.5 mm², color: blue, nominal current: 8 A, rated voltage (III/2): 320 V, contact surface: Sn, contact connection type: Socket, number of potentials: 2, number of rows: 2, number of positions: 2, number of connections: 4, product range: HSCP-SP 2,5-..., pitch: 5 mm, connection method: Push-in spring connection, conductor/PCB connection direction: 0 °, locking clip: - Locking clip, plug-in system: HSC 2,5, locking: without, mounting method: without, type of packaging: packed in cardboard, Color of the spring lever: orange

HSCP-SP 2,5-1U4-22/50-7035 - PCB connector

1734778

<https://www.phoenixcontact.com/in/products/1734778>



PCB connector, nominal cross section: 2.5 mm², color: light gray, nominal current: 8 A, rated voltage (III/2): 320 V, contact surface: Sn, contact connection type: Socket, number of potentials: 4, number of rows: 2, number of positions: 4, number of connections: 4, product range: HSCP-SP 2,5-..., pitch: 5 mm, connection method: Push-in spring connection, conductor/PCB connection direction: 0 °, locking clip: - Locking clip, plug-in system: HSC 2,5, locking: without, mounting method: without, type of packaging: packed in cardboard, Color of the spring levers: red, red/green, black

ME-IO 18,8 B/FE 10U TBUS 7035 - Mounting base housing



2202507

<https://www.phoenixcontact.com/in/products/2202507>

HSCP-SP 2,5-1U02-B9/B9-9005 - PCB connector

1734797

<https://www.phoenixcontact.com/in/products/1734797>



PCB connector, nominal cross section: 2.5 mm², color: black, nominal current: 8 A, rated voltage (III/2): 320 V, contact surface: Sn, contact connection type: Socket, number of potentials: 2, number of rows: 2, number of positions: 2, number of connections: 2, product range: HSCP-SP 2,5-..., pitch: 5 mm, connection method: Push-in spring connection, conductor/PCB connection direction: 0 °, locking clip: - Locking clip, plug-in system: HSC 2,5, locking: without, mounting method: without, type of packaging: packed in cardboard, Partially assembled version

HSCP-SP 2,5-1U20-9B/9B-9005 - PCB connector

1734798

<https://www.phoenixcontact.com/in/products/1734798>



PCB connector, nominal cross section: 2.5 mm², color: black, nominal current: 8 A, rated voltage (III/2): 320 V, contact surface: Sn, contact connection type: Socket, number of potentials: 2, number of rows: 2, number of positions: 2, number of connections: 2, product range: HSCP-SP 2,5-..., pitch: 5 mm, connection method: Push-in spring connection, conductor/PCB connection direction: 0 °, locking clip: - Locking clip, plug-in system: HSC 2,5, locking: without, mounting method: without, type of packaging: packed in cardboard, Partially assembled version

ME-IO 18,8 B/FE 10U TBUS 7035 - Mounting base housing



2202507

<https://www.phoenixcontact.com/in/products/2202507>

HSCP-SP 2,5-1U4-00/44-7035 - PCB connector

1734801

<https://www.phoenixcontact.com/in/products/1734801>



PCB connector, nominal cross section: 2.5 mm², color: light gray, nominal current: 8 A, rated voltage (III/2): 320 V, contact surface: Sn, contact connection type: Socket, number of potentials: 4, number of rows: 2, number of positions: 4, number of connections: 4, product range: HSCP-SP 2,5-..., pitch: 5 mm, connection method: Push-in spring connection, conductor/PCB connection direction: 0 °, locking clip: - Locking clip, plug-in system: HSC 2,5, locking: without, mounting method: without, type of packaging: packed in cardboard, Color of the spring levers: black, black/yellow, yellow

HSCP-SP 2,5-1U20-0B/2B-7035 - PCB connector

1734803

<https://www.phoenixcontact.com/in/products/1734803>



PCB connector, nominal cross section: 2.5 mm², color: light gray, nominal current: 8 A, rated voltage (III/2): 320 V, contact surface: Sn, contact connection type: Socket, number of potentials: 2, number of rows: 2, number of positions: 2, number of connections: 2, product range: HSCP-SP 2,5-..., pitch: 5 mm, connection method: Push-in spring connection, conductor/PCB connection direction: 0 °, locking clip: - Locking clip, plug-in system: HSC 2,5, locking: without, mounting method: without, type of packaging: packed in cardboard, Color of the spring levers: black/red

ME-IO 18,8 B/FE 10U TBUS 7035 - Mounting base housing



2202507

<https://www.phoenixcontact.com/in/products/2202507>

HSCP-SP 2,5-1U4-00/22-7035 - PCB connector

1736145

<https://www.phoenixcontact.com/in/products/1736145>



PCB connector, nominal cross section: 2.5 mm², color: light gray, nominal current: 8 A, rated voltage (III/2): 320 V, contact surface: Sn, contact connection type: Socket, number of potentials: 4, number of rows: 2, number of positions: 4, number of connections: 4, product range: HSCP-SP 2,5-..., pitch: 5 mm, connection method: Push-in spring connection, conductor/PCB connection direction: 0 °, locking clip: - Locking clip, plug-in system: HSC 2,5, locking: without, mounting method: without, type of packaging: packed in cardboard, Color of the spring levers: black, black / red, red

HSCP-SP 2,5-1U4-7035 - PCB connector

2201780

<https://www.phoenixcontact.com/in/products/2201780>



PCB connector, nominal cross section: 2.5 mm², color: light gray, nominal current: 8 A, rated voltage (III/2): 320 V, contact surface: Sn, contact connection type: Socket, number of potentials: 4, number of rows: 2, number of positions: 4, number of connections: 4, product range: HSCP-SP 2,5-..., pitch: 5 mm, connection method: Push-in spring connection, conductor/PCB connection direction: 0 °, locking clip: - Locking clip, plug-in system: HSC 2,5, locking: without, mounting method: without, type of packaging: packed in cardboard, Color of the spring lever: orange

ME-IO 18,8 B/FE 10U TBUS 7035 - Mounting base housing



2202507

<https://www.phoenixcontact.com/in/products/2202507>

HSCP-SP 2,5-1UTT-7035 - PCB connector

2201781

<https://www.phoenixcontact.com/in/products/2201781>



PCB connector, nominal cross section: 2.5 mm², color: light gray, nominal current: 8 A, rated voltage (III/2): 320 V, contact surface: Sn, contact connection type: Socket, number of potentials: 2, number of rows: 2, number of positions: 2, number of connections: 4, product range: HSCP-SP 2,5-..., pitch: 5 mm, connection method: Push-in spring connection, conductor/PCB connection direction: 0 °, locking clip: - Locking clip, plug-in system: HSC 2,5, locking: without, mounting method: without, type of packaging: packed in cardboard, Color of the spring lever: orange

HSCP-SP 2,5-1U20-7035 - PCB connector

2201782

<https://www.phoenixcontact.com/in/products/2201782>



PCB connector, nominal cross section: 2.5 mm², color: light gray, nominal current: 8 A, rated voltage (III/2): 320 V, contact surface: Sn, contact connection type: Socket, number of potentials: 2, number of rows: 2, number of positions: 2, number of connections: 2, product range: HSCP-SP 2,5-..., pitch: 5 mm, connection method: Push-in spring connection, conductor/PCB connection direction: 0 °, locking clip: - Locking clip, plug-in system: HSC 2,5, locking: without, mounting method: without, type of packaging: packed in cardboard, Partially assembled version

ME-IO 18,8 B/FE 10U TBUS 7035 - Mounting base housing



2202507

<https://www.phoenixcontact.com/in/products/2202507>

HSCP-SP 2,5-1U4-44/44-7035 - PCB connector

2202567

<https://www.phoenixcontact.com/in/products/2202567>



PCB connector, nominal cross section: 2.5 mm², color: light gray, nominal current: 8 A, rated voltage (III/2): 320 V, contact surface: Sn, contact connection type: Socket, number of potentials: 4, number of rows: 2, number of positions: 4, number of connections: 4, product range: HSCP-SP 2,5-..., pitch: 5 mm, connection method: Push-in spring connection, conductor/PCB connection direction: 0 °, locking clip: - Locking clip, plug-in system: HSC 2,5, locking: without, mounting method: without, type of packaging: packed in cardboard, Color of the spring levers: yellow, yellow / yellow, yellow

HSCP-SP 2,5-1U4-99/99-7035 - PCB connector

2202568

<https://www.phoenixcontact.com/in/products/2202568>



PCB connector, nominal cross section: 2.5 mm², color: light gray, nominal current: 8 A, rated voltage (III/2): 320 V, contact surface: Sn, contact connection type: Socket, number of potentials: 4, number of rows: 2, number of positions: 4, number of connections: 4, product range: HSCP-SP 2,5-..., pitch: 5 mm, connection method: Push-in spring connection, conductor/PCB connection direction: 0 °, locking clip: - Locking clip, plug-in system: HSC 2,5, locking: without, mounting method: without, type of packaging: packed in cardboard, Color of the spring levers: white, white / white, white

ME-IO 18,8 B/FE 10U TBUS 7035 - Mounting base housing



2202507

<https://www.phoenixcontact.com/in/products/2202507>

HSCP-SP 2,5-1U4-00/00-7035 - PCB connector

2202569

<https://www.phoenixcontact.com/in/products/2202569>



PCB connector, nominal cross section: 2.5 mm², color: light gray, nominal current: 8 A, rated voltage (III/2): 320 V, contact surface: Sn, contact connection type: Socket, number of potentials: 4, number of rows: 2, number of positions: 4, number of connections: 4, product range: HSCP-SP 2,5-..., pitch: 5 mm, connection method: Push-in spring connection, conductor/PCB connection direction: 0 °, locking clip: - Locking clip, plug-in system: HSC 2,5, locking: without, mounting method: without, type of packaging: packed in cardboard, Color of the spring levers: black, black / black, black

HSCP-SP 2,5-1U4-66/66-7035 - PCB connector

2202570

<https://www.phoenixcontact.com/in/products/2202570>



PCB connector, nominal cross section: 2.5 mm², color: light gray, nominal current: 8 A, rated voltage (III/2): 320 V, contact surface: Sn, contact connection type: Socket, number of potentials: 4, number of rows: 2, number of positions: 4, number of connections: 4, product range: HSCP-SP 2,5-..., pitch: 5 mm, connection method: Push-in spring connection, conductor/PCB connection direction: 0 °, locking clip: - Locking clip, plug-in system: HSC 2,5, locking: without, mounting method: without, type of packaging: packed in cardboard, Color of the spring levers: blue, blue / blue, blue

ME-IO 18,8 B/FE 10U TBUS 7035 - Mounting base housing



2202507

<https://www.phoenixcontact.com/in/products/2202507>

HSCP-SP 2,5-1U4-55/55-7035 - PCB connector

2202571

<https://www.phoenixcontact.com/in/products/2202571>



PCB connector, nominal cross section: 2.5 mm², color: light gray, nominal current: 8 A, rated voltage (III/2): 320 V, contact surface: Sn, contact connection type: Socket, number of potentials: 4, number of rows: 2, number of positions: 4, number of connections: 4, product range: HSCP-SP 2,5-..., pitch: 5 mm, connection method: Push-in spring connection, conductor/PCB connection direction: 0 °, locking clip: - Locking clip, plug-in system: HSC 2,5, locking: without, mounting method: without, type of packaging: packed in cardboard, Color of the spring levers: green, green / green, green

HSCP-SP 2,5-1U4-22/22-7035 - PCB connector

2202572

<https://www.phoenixcontact.com/in/products/2202572>



PCB connector, nominal cross section: 2.5 mm², color: light gray, nominal current: 8 A, rated voltage (III/2): 320 V, contact surface: Sn, contact connection type: Socket, number of potentials: 4, number of rows: 2, number of positions: 4, number of connections: 4, product range: HSCP-SP 2,5-..., pitch: 5 mm, connection method: Push-in spring connection, conductor/PCB connection direction: 0 °, locking clip: - Locking clip, plug-in system: HSC 2,5, locking: without, mounting method: without, type of packaging: packed in cardboard, Color of the spring levers: red, red / red, red

ME-IO 18,8 B/FE 10U TBUS 7035 - Mounting base housing



2202507

<https://www.phoenixcontact.com/in/products/2202507>

HSCP-SP 2,5-1U4-69/69-7035 - PCB connector

2202605

<https://www.phoenixcontact.com/in/products/2202605>



PCB connector, nominal cross section: 2.5 mm², color: light gray, nominal current: 8 A, rated voltage (III/2): 320 V, contact surface: Sn, contact connection type: Socket, number of potentials: 4, number of rows: 2, number of positions: 4, number of connections: 4, product range: HSCP-SP 2,5-..., pitch: 5 mm, connection method: Push-in spring connection, conductor/PCB connection direction: 0 °, locking clip: - Locking clip, plug-in system: HSC 2,5, locking: without, mounting method: without, type of packaging: packed in cardboard, Spring opener color: blue, white/blue, white

HSCP-SP 2,5-1UTT-62/62-7035 - PCB connector

2202606

<https://www.phoenixcontact.com/in/products/2202606>



PCB connector, nominal cross section: 2.5 mm², color: light gray, nominal current: 8 A, rated voltage (III/2): 320 V, contact surface: Sn, contact connection type: Socket, number of potentials: 2, number of rows: 2, number of positions: 2, number of connections: 4, product range: HSCP-SP 2,5-..., pitch: 5 mm, connection method: Push-in spring connection, conductor/PCB connection direction: 0 °, locking clip: - Locking clip, plug-in system: HSC 2,5, locking: without, mounting method: without, type of packaging: packed in cardboard, Spring opener color: blue, red/blue, red

ME-IO 18,8 B/FE 10U TBUS 7035 - Mounting base housing



2202507

<https://www.phoenixcontact.com/in/products/2202507>

HSCP-SP 2,5-1UTT-55/55-7035 - PCB connector

2202607

<https://www.phoenixcontact.com/in/products/2202607>



PCB connector, nominal cross section: 2.5 mm², color: light gray, nominal current: 8 A, rated voltage (III/2): 320 V, contact surface: Sn, contact connection type: Socket, number of potentials: 2, number of rows: 2, number of positions: 2, number of connections: 4, product range: HSCP-SP 2,5-..., pitch: 5 mm, connection method: Push-in spring connection, conductor/PCB connection direction: 0 °, locking clip: - Locking clip, plug-in system: HSC 2,5, locking: without, mounting method: without, type of packaging: packed in cardboard, Color of the spring levers: green, green / green, green

HSCP-SP 2,5-1U4-99/62-7035 - PCB connector

2202608

<https://www.phoenixcontact.com/in/products/2202608>



PCB connector, nominal cross section: 2.5 mm², color: light gray, nominal current: 8 A, rated voltage (III/2): 320 V, contact surface: Sn, contact connection type: Socket, number of potentials: 4, number of rows: 2, number of positions: 4, number of connections: 4, product range: HSCP-SP 2,5-..., pitch: 5 mm, connection method: Push-in spring connection, conductor/PCB connection direction: 0 °, locking clip: - Locking clip, plug-in system: HSC 2,5, locking: without, mounting method: without, type of packaging: packed in cardboard, Spring opener color: white, white/blue, red

ME-IO 18,8 B/FE 10U TBUS 7035 - Mounting base housing



2202507

<https://www.phoenixcontact.com/in/products/2202507>

HSCP-SP 2,5-1U00-7035 - Filler plug

2202610

<https://www.phoenixcontact.com/in/products/2202610>



PCB connector, nominal cross section: 2.5 mm², color: light gray, nominal current: 8 A, rated voltage (III/2): 300 V, number of potentials: 0, number of rows: 2, number of positions: 0, number of connections: 0, product range: HSCP-SP 2,5-..., pitch: 5 mm, number of solder pins per potential: 0, locking clip: - Locking clip, plug-in system: HSC 2,5, locking: without, mounting method: without, type of packaging: packed in cardboard, Filler plugs

HSCP-SP 2,5-1U4-29/29-7035 - PCB connector

2203192

<https://www.phoenixcontact.com/in/products/2203192>



PCB connector, nominal cross section: 2.5 mm², color: light gray, nominal current: 8 A, rated voltage (III/2): 320 V, contact surface: Sn, contact connection type: Socket, number of potentials: 4, number of rows: 2, number of positions: 4, number of connections: 4, product range: HSCP-SP 2,5-..., pitch: 5 mm, connection method: Push-in spring connection, conductor/PCB connection direction: 0 °, locking clip: - Locking clip, plug-in system: HSC 2,5, locking: without, mounting method: without, type of packaging: packed in cardboard, Spring opener color: red, white/red, white

ME-IO 18,8 B/FE 10U TBUS 7035 - Mounting base housing



2202507

<https://www.phoenixcontact.com/in/products/2202507>

HSCP-SP 2,5-1U4-62/59-7035 - PCB connector

2203194

<https://www.phoenixcontact.com/in/products/2203194>



PCB connector, nominal cross section: 2.5 mm², color: light gray, nominal current: 8 A, rated voltage (III/2): 320 V, contact surface: Sn, contact connection type: Socket, number of potentials: 4, number of rows: 2, number of positions: 4, number of connections: 4, product range: HSCP-SP 2,5-..., pitch: 5 mm, connection method: Push-in spring connection, conductor/PCB connection direction: 0 °, locking clip: - Locking clip, plug-in system: HSC 2,5, locking: without, mounting method: without, type of packaging: packed in cardboard, Spring opener color: blue, red/green, white

HSCP-SP 2,5-1U4-65/65-7035 - PCB connector

2203195

<https://www.phoenixcontact.com/in/products/2203195>



PCB connector, nominal cross section: 2.5 mm², color: light gray, nominal current: 8 A, rated voltage (III/2): 320 V, contact surface: Sn, contact connection type: Socket, number of potentials: 4, number of rows: 2, number of positions: 4, number of connections: 4, product range: HSCP-SP 2,5-..., pitch: 5 mm, connection method: Push-in spring connection, conductor/PCB connection direction: 0 °, locking clip: - Locking clip, plug-in system: HSC 2,5, locking: without, mounting method: without, type of packaging: packed in cardboard, Spring opener color: blue, green/blue, green

ME-IO 18,8 B/FE 10U TBUS 7035 - Mounting base housing



2202507

<https://www.phoenixcontact.com/in/products/2202507>

HSCP-SP 2,5-1U4-9005 - PCB connector

2203322

<https://www.phoenixcontact.com/in/products/2203322>



PCB connector, nominal cross section: 2.5 mm², color: black, nominal current: 8 A, rated voltage (III/2): 320 V, contact surface: Sn, contact connection type: Socket, number of potentials: 4, number of rows: 2, number of positions: 4, number of connections: 4, product range: HSCP-SP 2,5-..., pitch: 5 mm, connection method: Push-in spring connection, conductor/PCB connection direction: 0 °, locking clip: - Locking clip, plug-in system: HSC 2,5, locking: without, mounting method: without, type of packaging: packed in cardboard, Color of the spring lever: orange

HSCP-SP 2,5-1U4-66/22-7035 - PCB connector

2203473

<https://www.phoenixcontact.com/in/products/2203473>



PCB connector, nominal cross section: 2.5 mm², color: light gray, nominal current: 8 A, rated voltage (III/2): 320 V, contact surface: Sn, contact connection type: Socket, number of potentials: 4, number of rows: 2, number of positions: 4, number of connections: 4, product range: HSCP-SP 2,5-..., pitch: 5 mm, connection method: Push-in spring connection, conductor/PCB connection direction: 0 °, locking clip: - Locking clip, plug-in system: HSC 2,5, locking: without, mounting method: without, type of packaging: packed in cardboard, Color of the spring levers: blue, blue/red, red

ME-IO 18,8 B/FE 10U TBUS 7035 - Mounting base housing



2202507

<https://www.phoenixcontact.com/in/products/2202507>

HSCP-SP 2,5-1U4-44/44-7016 - PCB connector

2203818

<https://www.phoenixcontact.com/in/products/2203818>



PCB connector, nominal cross section: 2.5 mm², color: anthracite grey, nominal current: 8 A, rated voltage (III/2): 320 V, contact surface: Sn, contact connection type: Socket, number of potentials: 4, number of rows: 2, number of positions: 4, number of connections: 4, product range: HSCP-SP 2,5-..., pitch: 5 mm, connection method: Push-in spring connection, conductor/PCB connection direction: 0 °, locking clip: - Locking clip, plug-in system: HSC 2,5, locking: without, mounting method: without, type of packaging: packed in cardboard, Color of the spring levers: yellow, yellow / yellow, yellow

HSCP-SP 1,5-1U6-396/396-7035 - PCB connector

1064546

<https://www.phoenixcontact.com/in/products/1064546>



PCB connector, nominal cross section: 1.5 mm², color: light gray, nominal current: 8 A, rated voltage (III/2): 160 V, contact surface: Sn, contact connection type: Socket, number of potentials: 6, number of rows: 2, number of positions: 6, number of connections: 6, product range: HSCP-SP 1,5-..., pitch: 3.45 mm, connection method: Push-in spring connection, conductor/PCB connection direction: 0 °, locking clip: - Locking clip, plug-in system: HSC 1,5, locking: without, mounting method: without, type of packaging: packed in cardboard, Color of the spring levers: orange, white, blue/orange, white, blue

ME-IO 18,8 B/FE 10U TBUS 7035 - Mounting base housing



2202507

<https://www.phoenixcontact.com/in/products/2202507>

HSCP-SP 1,5-1U6-545/545-7035 - PCB connector

1064547

<https://www.phoenixcontact.com/in/products/1064547>



PCB connector, nominal cross section: 1.5 mm², color: light gray, nominal current: 8 A, rated voltage (III/2): 160 V, contact surface: Sn, contact connection type: Socket, number of potentials: 6, number of rows: 2, number of positions: 6, number of connections: 6, product range: HSCP-SP 1,5-..., pitch: 3.45 mm, connection method: Push-in spring connection, conductor/PCB connection direction: 0 °, locking clip: - Locking clip, plug-in system: HSC 1,5, locking: without, mounting method: without, type of packaging: packed in cardboard, Color of the spring levers: green, yellow, green/green, yellow, green

HSCP-SP 1,5-1U6-045/045-7035 - PCB connector

1064548

<https://www.phoenixcontact.com/in/products/1064548>



PCB connector, nominal cross section: 1.5 mm², color: light gray, nominal current: 8 A, rated voltage (III/2): 160 V, contact surface: Sn, contact connection type: Socket, number of potentials: 6, number of rows: 2, number of positions: 6, number of connections: 6, product range: HSCP-SP 1,5-..., pitch: 3.45 mm, connection method: Push-in spring connection, conductor/PCB connection direction: 0 °, locking clip: - Locking clip, plug-in system: HSC 1,5, locking: without, mounting method: without, type of packaging: packed in cardboard, Color of the spring levers: black, yellow, green/black, yellow, green

ME-IO 18,8 B/FE 10U TBUS 7035 - Mounting base housing



2202507

<https://www.phoenixcontact.com/in/products/2202507>

HSCP-SP 1,5-1U6-000/000-7035 - PCB connector

1064549

<https://www.phoenixcontact.com/in/products/1064549>



PCB connector, nominal cross section: 1.5 mm², color: light gray, nominal current: 8 A, rated voltage (III/2): 160 V, contact surface: Sn, contact connection type: Socket, number of potentials: 6, number of rows: 2, number of positions: 6, number of connections: 6, product range: HSCP-SP 1,5-..., pitch: 3.45 mm, connection method: Push-in spring connection, conductor/PCB connection direction: 0 °, locking clip: - Locking clip, plug-in system: HSC 1,5, locking: without, mounting method: without, type of packaging: packed in cardboard, Color of the spring levers: black

HSCP-SP 1,5-1U6-336/336-7035 - PCB connector

1100022

<https://www.phoenixcontact.com/in/products/1100022>



PCB connector, nominal cross section: 1.5 mm², color: light gray, nominal current: 8 A, rated voltage (III/2): 160 V, contact surface: Sn, contact connection type: Socket, number of potentials: 6, number of rows: 2, number of positions: 6, number of connections: 6, product range: HSCP-SP 1,5-..., pitch: 3.45 mm, connection method: Push-in spring connection, conductor/PCB connection direction: 0 °, locking clip: - Locking clip, plug-in system: HSC 1,5, locking: without, mounting method: without, type of packaging: packed in cardboard, Color of the spring levers: orange, orange, blue/orange, orange, blue

ME-IO 18,8 B/FE 10U TBUS 7035 - Mounting base housing



2202507

<https://www.phoenixcontact.com/in/products/2202507>

HSCP-SP 1,5-1U6-555/555-7035 - PCB connector

1106783

<https://www.phoenixcontact.com/in/products/1106783>



PCB connector, nominal cross section: 1.5 mm², color: light gray, nominal current: 8 A, rated voltage (III/2): 160 V, contact surface: Sn, contact connection type: Socket, number of potentials: 6, number of rows: 2, number of positions: 6, number of connections: 6, product range: HSCP-SP 1,5-..., pitch: 3.45 mm, connection method: Push-in spring connection, conductor/PCB connection direction: 0 °, locking clip: - Locking clip, plug-in system: HSC 1,5, locking: without, mounting method: without, type of packaging: packed in cardboard, Color of the spring levers: green

HSCP-SP 1,5-1U6-7016 - PCB connector

1205101

<https://www.phoenixcontact.com/in/products/1205101>



PCB connector, nominal cross section: 1.5 mm², color: anthracite grey, nominal current: 8 A, rated voltage (III/2): 160 V, contact surface: Sn, contact connection type: Socket, number of potentials: 6, number of rows: 2, number of positions: 6, number of connections: 6, product range: HSCP-SP 1,5-..., pitch: 3.45 mm, connection method: Push-in spring connection, conductor/PCB connection direction: 0 °, locking clip: - Locking clip, plug-in system: HSC 1,5, locking: without, mounting method: without, type of packaging: packed in cardboard, Color of the spring lever: orange

ME-IO 18,8 B/FE 10U TBUS 7035 - Mounting base housing



2202507

<https://www.phoenixcontact.com/in/products/2202507>

HSCP-SP 1,5-1U6-629/629-7016 - PCB connector

1209687

<https://www.phoenixcontact.com/in/products/1209687>



PCB connector, nominal cross section: 1.5 mm², color: anthracite grey, nominal current: 8 A, rated voltage (III/2): 160 V, contact surface: Sn, contact connection type: Socket, number of potentials: 6, number of rows: 2, number of positions: 6, number of connections: 6, product range: HSCP-SP 1,5-..., pitch: 3.45 mm, connection method: Push-in spring connection, conductor/PCB connection direction: 0 °, locking clip: - Locking clip, plug-in system: HSC 1,5, locking: without, mounting method: without, type of packaging: packed in cardboard, Spring opener color: blue, red, white/blue, red, white

HSCP-SP 1,5-1U6-260/260-7035 - PCB connector

1326553

<https://www.phoenixcontact.com/in/products/1326553>



PCB connector, nominal cross section: 1.5 mm², color: light gray, nominal current: 8 A, rated voltage (III/2): 160 V, contact surface: Sn, contact connection type: Socket, number of potentials: 6, number of rows: 2, number of positions: 6, number of connections: 6, product range: HSCP-SP 1,5-..., pitch: 3.45 mm, connection method: Push-in spring connection, conductor/PCB connection direction: 0 °, locking clip: - Locking clip, plug-in system: HSC 1,5, locking: without, mounting method: without, type of packaging: packed in cardboard, Color of the spring levers: red, blue, black / red, blue, black

ME-IO 18,8 B/FE 10U TBUS 7035 - Mounting base housing



2202507

<https://www.phoenixcontact.com/in/products/2202507>

HSCP-SP 1,5-1U6-222/222-7035 - PCB connector

1344448

<https://www.phoenixcontact.com/in/products/1344448>



PCB connector, nominal cross section: 1.5 mm², color: light gray, nominal current: 8 A, rated voltage (III/2): 160 V, contact surface: Sn, contact connection type: Socket, number of potentials: 6, number of rows: 2, number of positions: 6, number of connections: 6, product range: HSCP-SP 1,5-..., pitch: 3.45 mm, connection method: Push-in spring connection, conductor/PCB connection direction: 0 °, locking clip: - Locking clip, plug-in system: HSC 1,5, locking: without, mounting method: without, type of packaging: packed in cardboard, Color of the spring lever: red

HSCP-SP 1,5-1U6-444/444-7035 - PCB connector

1344449

<https://www.phoenixcontact.com/in/products/1344449>



PCB connector, nominal cross section: 1.5 mm², color: light gray, nominal current: 8 A, rated voltage (III/2): 160 V, contact surface: Sn, contact connection type: Socket, number of potentials: 6, number of rows: 2, number of positions: 6, number of connections: 6, product range: HSCP-SP 1,5-..., pitch: 3.45 mm, connection method: Push-in spring connection, conductor/PCB connection direction: 0 °, locking clip: - Locking clip, plug-in system: HSC 1,5, locking: without, mounting method: without, type of packaging: packed in cardboard, Color of the spring lever: yellow

ME-IO 18,8 B/FE 10U TBUS 7035 - Mounting base housing



2202507

<https://www.phoenixcontact.com/in/products/2202507>

HSCP-SP 1,5-1U6-062/062-7035 - PCB connector

1344923

<https://www.phoenixcontact.com/in/products/1344923>



PCB connector, nominal cross section: 1.5 mm², color: light gray, nominal current: 8 A, rated voltage (III/2): 160 V, contact surface: Sn, contact connection type: Socket, number of potentials: 6, number of rows: 2, number of positions: 6, number of connections: 6, product range: HSCP-SP 1,5-..., pitch: 3.45 mm, connection method: Push-in spring connection, conductor/PCB connection direction: 0 °, locking clip: - Locking clip, plug-in system: HSC 1,5, locking: without, mounting method: without, type of packaging: packed in cardboard, Color of the spring levers: black, blue, red / black, blue, red

HSCP-SP 1,5-1U6-696/696-7035 - PCB connector

1376979

<https://www.phoenixcontact.com/in/products/1376979>



PCB connector, nominal cross section: 1.5 mm², color: light gray, nominal current: 8 A, rated voltage (III/2): 160 V, contact surface: Sn, contact connection type: Socket, number of potentials: 6, number of rows: 2, number of positions: 6, number of connections: 6, product range: HSCP-SP 1,5-..., pitch: 3.45 mm, connection method: Push-in spring connection, conductor/PCB connection direction: 0 °, locking clip: - Locking clip, plug-in system: HSC 1,5, locking: without, mounting method: without, type of packaging: packed in cardboard, Color of the spring levers: white, blue / blue, white, blue

ME-IO 18,8 B/FE 10U TBUS 7035 - Mounting base housing



2202507

<https://www.phoenixcontact.com/in/products/2202507>

HSCP-SP 1,5-1U6-5015 - PCB connector

1493475

<https://www.phoenixcontact.com/in/products/1493475>



PCB connector, nominal cross section: 1.5 mm², color: light gray, nominal current: 8 A, rated voltage (III/2): 160 V, contact surface: Sn, contact connection type: Socket, number of potentials: 6, number of rows: 2, number of positions: 6, number of connections: 6, product range: HSCP-SP 1,5-..., pitch: 3.45 mm, connection method: Push-in spring connection, conductor/PCB connection direction: 0 °, locking clip: - Locking clip, plug-in system: HSC 1,5, locking: without, mounting method: without, type of packaging: packed in cardboard, Color of the spring lever: orange

HSCP-SP 1,5-1U6-599/599-7035 - PCB connector

1495033

<https://www.phoenixcontact.com/in/products/1495033>



PCB connector, nominal cross section: 1.5 mm², color: light gray, nominal current: 8 A, rated voltage (III/2): 160 V, contact surface: Sn, contact connection type: Socket, number of potentials: 6, number of rows: 2, number of positions: 6, number of connections: 6, product range: HSCP-SP 1,5-..., pitch: 3.45 mm, connection method: Push-in spring connection, conductor/PCB connection direction: 0 °, locking clip: - Locking clip, plug-in system: HSC 1,5, locking: without, mounting method: without, type of packaging: packed in cardboard, Color of the spring levers: green, white, white / green, white, white

ME-IO 18,8 B/FE 10U TBUS 7035 - Mounting base housing



2202507

<https://www.phoenixcontact.com/in/products/2202507>

HSCP-SP 1,5-1U6-624/624-7035 - PCB connector

1510185

<https://www.phoenixcontact.com/in/products/1510185>



PCB connector, nominal cross section: 1.5 mm², color: light gray, nominal current: 8 A, rated voltage (III/2): 160 V, contact surface: Sn, contact connection type: Socket, number of potentials: 6, number of rows: 2, number of positions: 6, number of connections: 6, product range: HSCP-SP 1,5-..., pitch: 3.45 mm, connection method: Push-in spring connection, conductor/PCB connection direction: 0 °, locking clip: - Locking clip, plug-in system: HSC 1,5, locking: without, mounting method: without, type of packaging: packed in cardboard, Color of the spring levers: blue, red, yellow/blue, red, yellow

HSCP-SP 1,5-1U6-445/445-7035 - PCB connector

1510186

<https://www.phoenixcontact.com/in/products/1510186>



PCB connector, nominal cross section: 1.5 mm², color: light gray, nominal current: 8 A, rated voltage (III/2): 160 V, contact surface: Sn, contact connection type: Socket, number of potentials: 6, number of rows: 2, number of positions: 6, number of connections: 6, product range: HSCP-SP 1,5-..., pitch: 3.45 mm, connection method: Push-in spring connection, conductor/PCB connection direction: 0 °, locking clip: - Locking clip, plug-in system: HSC 1,5, locking: without, mounting method: without, type of packaging: packed in cardboard, Color of the spring levers: yellow, yellow, green/yellow, yellow, green

ME-IO 18,8 B/FE 10U TBUS 7035 - Mounting base housing



2202507

<https://www.phoenixcontact.com/in/products/2202507>

HSCP-SP 1,5-1U6-7035 - PCB connector

2202234

<https://www.phoenixcontact.com/in/products/2202234>



PCB connector, nominal cross section: 1.5 mm², color: light gray, nominal current: 8 A, rated voltage (III/2): 160 V, contact surface: Sn, contact connection type: Socket, number of potentials: 6, number of rows: 2, number of positions: 6, number of connections: 6, product range: HSCP-SP 1,5-..., pitch: 3.45 mm, connection method: Push-in spring connection, conductor/PCB connection direction: 0 °, locking clip: - Locking clip, plug-in system: HSC 1,5, locking: without, mounting method: without, type of packaging: packed in cardboard, Color of the spring lever: orange

HSCP-SP 1,5-1U6-629/629-7035 - PCB connector

2202609

<https://www.phoenixcontact.com/in/products/2202609>



PCB connector, nominal cross section: 1.5 mm², color: light gray, nominal current: 8 A, rated voltage (III/2): 160 V, contact surface: Sn, contact connection type: Socket, number of potentials: 6, number of rows: 2, number of positions: 6, number of connections: 6, product range: HSCP-SP 1,5-..., pitch: 3.45 mm, connection method: Push-in spring connection, conductor/PCB connection direction: 0 °, locking clip: - Locking clip, plug-in system: HSC 1,5, locking: without, mounting method: without, type of packaging: packed in cardboard, Spring opener color: blue, red, white/blue, red, white

ME-IO 18,8 B/FE 10U TBUS 7035 - Mounting base housing



2202507

<https://www.phoenixcontact.com/in/products/2202507>

HSCP-SP 1,5-1U6-999/999-7035 - PCB connector

2203603

<https://www.phoenixcontact.com/in/products/2203603>



PCB connector, nominal cross section: 1.5 mm², color: light gray, nominal current: 8 A, rated voltage (III/2): 160 V, contact surface: Sn, contact connection type: Socket, number of potentials: 6, number of rows: 2, number of positions: 6, number of connections: 6, product range: HSCP-SP 1,5-..., pitch: 3.45 mm, connection method: Push-in spring connection, conductor/PCB connection direction: 0 °, locking clip: - Locking clip, plug-in system: HSC 1,5, locking: without, mounting method: without, type of packaging: packed in cardboard, Color of the spring levers: white

HSCP-SP 1,5-1U6-562/562-7035 - PCB connector

2203604

<https://www.phoenixcontact.com/in/products/2203604>



PCB connector, nominal cross section: 1.5 mm², color: light gray, nominal current: 8 A, rated voltage (III/2): 160 V, contact surface: Sn, contact connection type: Socket, number of potentials: 6, number of rows: 2, number of positions: 6, number of connections: 6, product range: HSCP-SP 1,5-..., pitch: 3.45 mm, connection method: Push-in spring connection, conductor/PCB connection direction: 0 °, locking clip: - Locking clip, plug-in system: HSC 1,5, locking: without, mounting method: without, type of packaging: packed in cardboard, Color of the spring levers: green, blue, red/green, blue, red

ME-IO 18,8 B/FE 10U TBUS 7035 - Mounting base housing



2202507

<https://www.phoenixcontact.com/in/products/2202507>

HSC-LR 9U KIT 2003 - Locking

2201794

<https://www.phoenixcontact.com/in/products/2201794>



DIN rail housing, 9U, Lock and Release system, width: 16.1 mm, height: 111.8 mm, depth: 8.8 mm, color: orange (similar RAL 2003)

HSC-LR 9U 2003 VPE100 - Locking

1643174

<https://www.phoenixcontact.com/in/products/1643174>



DIN rail housing, 9U, Lock and Release system, width: 16.1 mm, height: 111.8 mm, depth: 8.8 mm, color: orange (similar RAL 2003)

ME-IO 18,8 B/FE 10U TBUS 7035 - Mounting base housing



2202507

<https://www.phoenixcontact.com/in/products/2202507>

HSC-LR 9U KIT 1018 - Locking

1090370

<https://www.phoenixcontact.com/in/products/1090370>



DIN rail housing, 9U, Lock and Release system, width: 16.1 mm, height: 111.8 mm, depth: 8.8 mm, color: yellow (similar RAL 1018)

HSC-LR 9U KIT 3001 - Locking

1090364

<https://www.phoenixcontact.com/in/products/1090364>



DIN rail housing, 9U, Lock and Release system, width: 16.1 mm, height: 111.8 mm, depth: 8.8 mm, color: red (similar RAL 3001)

ME-IO 18,8 B/FE 10U TBUS 7035 - Mounting base housing



2202507

<https://www.phoenixcontact.com/in/products/2202507>

HSC-LR 9U KIT 5015 - Locking

2203851

<https://www.phoenixcontact.com/in/products/2203851>



DIN rail housing, 9U, Lock and Release system, width: 16.1 mm, height: 111.8 mm, depth: 8.8 mm, color: blue (similar RAL 5015)

HSC-LR 9U KIT 6021 - Locking

1142357

<https://www.phoenixcontact.com/in/products/1142357>



DIN rail housing, 9U, Lock and Release system, width: 16.1 mm, height: 111.8 mm, depth: 8.8 mm, color: green (similar RAL 6021)

ME-IO 18,8 B/FE 10U TBUS 7035 - Mounting base housing



2202507

<https://www.phoenixcontact.com/in/products/2202507>

HSC-LR 9U KIT 9005 - Locking

1090360

<https://www.phoenixcontact.com/in/products/1090360>



DIN rail housing, 9U, Lock and Release system, width: 16.1 mm, height: 111.8 mm, depth: 8.8 mm, color: black (similar RAL 9005)

HSC-LR 9U KIT 9010 - Locking

1090355

<https://www.phoenixcontact.com/in/products/1090355>



DIN rail housing, 9U, Lock and Release system, width: 16.1 mm, height: 111.8 mm, depth: 8.8 mm, color: white (similar RAL 9010)

ME-IO 18,8 B/FE 10U TBUS 7035 - Mounting base housing



2202507

<https://www.phoenixcontact.com/in/products/2202507>

HSC-LR 7U KIT 2003 - Locking

2201795

<https://www.phoenixcontact.com/in/products/2201795>



DIN rail housing, 7U, Lock and Release system, width: 16.1 mm, height: 89.95 mm, depth: 8.8 mm, color: orange (similar RAL 2003)

HSC-LR 7U KIT 1018 - Locking

1090368

<https://www.phoenixcontact.com/in/products/1090368>



DIN rail housing, 7U, Lock and Release system, width: 16.1 mm, height: 89.95 mm, depth: 8.8 mm, color: yellow (similar RAL 1018)

ME-IO 18,8 B/FE 10U TBUS 7035 - Mounting base housing



2202507

<https://www.phoenixcontact.com/in/products/2202507>

HSC-LR 7U KIT 3001 - Locking

1090363

<https://www.phoenixcontact.com/in/products/1090363>



DIN rail housing, 7U, Lock and Release system, width: 16.1 mm, height: 89.95 mm, depth: 8.8 mm, color: red (similar RAL 3001)

HSC-LR 7U KIT 5015 - Locking

2203850

<https://www.phoenixcontact.com/in/products/2203850>



DIN rail housing, 7U, Lock and Release system, width: 16.1 mm, height: 89.95 mm, depth: 8.8 mm, color: blue (similar RAL 5015)

ME-IO 18,8 B/FE 10U TBUS 7035 - Mounting base housing



2202507

<https://www.phoenixcontact.com/in/products/2202507>

HSC-LR 7U KIT 6021 - Locking

1142183

<https://www.phoenixcontact.com/in/products/1142183>



DIN rail housing, 7U, Lock and Release system, width: 16.1 mm, height: 89.95 mm, depth: 8.8 mm, color: green (similar RAL 6021)

HSC-LR 7U KIT 9005 - Locking

1090359

<https://www.phoenixcontact.com/in/products/1090359>



DIN rail housing, 7U, Lock and Release system, width: 16.1 mm, height: 89.95 mm, depth: 8.8 mm, color: black (similar RAL 9005)

ME-IO 18,8 B/FE 10U TBUS 7035 - Mounting base housing



2202507

<https://www.phoenixcontact.com/in/products/2202507>

HSC-LR 7U KIT 9010 - Locking

1090353

<https://www.phoenixcontact.com/in/products/1090353>



DIN rail housing, 7U, Lock and Release system, width: 16.1 mm, height: 89.95 mm, depth: 8.8 mm, color: white (similar RAL 9010)

HSC-LR 5U KIT 2003 - Locking

2201796

<https://www.phoenixcontact.com/in/products/2201796>



DIN rail housing, 5U, Lock and Release system, width: 16.1 mm, height: 67.95 mm, depth: 8.8 mm, color: orange (similar RAL 2003)

ME-IO 18,8 B/FE 10U TBUS 7035 - Mounting base housing



2202507

<https://www.phoenixcontact.com/in/products/2202507>

HSC-LR 5U KIT 1018 - Locking

1090367

<https://www.phoenixcontact.com/in/products/1090367>



DIN rail housing, 5U, Lock and Release system, width: 16.1 mm, height: 67.95 mm, depth: 8.8 mm, color: yellow (similar RAL 1018)

HSC-LR 5U KIT 3001 - Locking

1090362

<https://www.phoenixcontact.com/in/products/1090362>



DIN rail housing, 5U, Lock and Release system, width: 16.1 mm, height: 67.95 mm, depth: 8.8 mm, color: red (similar RAL 3001)

ME-IO 18,8 B/FE 10U TBUS 7035 - Mounting base housing



2202507

<https://www.phoenixcontact.com/in/products/2202507>

HSC-LR 5U KIT 5015 - Locking

1083384

<https://www.phoenixcontact.com/in/products/1083384>



DIN rail housing, 5U, Lock and Release system, width: 16.1 mm, height: 67.95 mm, depth: 8.8 mm, color: blue (similar RAL 5015)

HSC-LR 5U KIT 9005 - Locking

1090358

<https://www.phoenixcontact.com/in/products/1090358>



DIN rail housing, 5U, Lock and Release system, width: 16.1 mm, height: 67.95 mm, depth: 8.8 mm, color: black (similar RAL 9005)

ME-IO 18,8 B/FE 10U TBUS 7035 - Mounting base housing



2202507

<https://www.phoenixcontact.com/in/products/2202507>

HSC-LR 5U KIT 9010 - Locking

1090352

<https://www.phoenixcontact.com/in/products/1090352>



DIN rail housing, 5U, Lock and Release system, width: 16.1 mm, height: 67.95 mm, depth: 8.8 mm, color: white (similar RAL 9010)

HSC-LR 3U KIT 2003 - Locking

2201797

<https://www.phoenixcontact.com/in/products/2201797>



DIN rail housing, 3U, Lock and Release system, width: 16.1 mm, height: 45.95 mm, depth: 8.8 mm, color: orange (similar RAL 2003)

ME-IO 18,8 B/FE 10U TBUS 7035 - Mounting base housing



2202507

<https://www.phoenixcontact.com/in/products/2202507>

HSC-LR 3U KIT 1018 - Locking

1090366

<https://www.phoenixcontact.com/in/products/1090366>



DIN rail housing, 3U, Lock and Release system, width: 16.1 mm, height: 45.95 mm, depth: 8.8 mm, color: yellow (similar RAL 1018)

HSC-LR 3U KIT 3001 - Locking

1090361

<https://www.phoenixcontact.com/in/products/1090361>



DIN rail housing, 3U, Lock and Release system, width: 16.1 mm, height: 45.95 mm, depth: 8.8 mm, color: red (similar RAL 3001)

ME-IO 18,8 B/FE 10U TBUS 7035 - Mounting base housing



2202507

<https://www.phoenixcontact.com/in/products/2202507>

HSC-LR 3U KIT 5015 - Locking

2203849

<https://www.phoenixcontact.com/in/products/2203849>



DIN rail housing, 3U, Lock and Release system, width: 16.1 mm, height: 45.95 mm, depth: 8.8 mm, color: blue (similar RAL 5015)

HSC-LR 3U KIT 7035 - Locking

1326357

<https://www.phoenixcontact.com/in/products/1326357>



DIN rail housing, 3U, Lock and Release system, width: 16.1 mm, height: 45.95 mm, depth: 8.8 mm, color: light gray (similar RAL 7035)

ME-IO 18,8 B/FE 10U TBUS 7035 - Mounting base housing



2202507

<https://www.phoenixcontact.com/in/products/2202507>

HSC-LR 3U KIT 9005 - Locking

1090356

<https://www.phoenixcontact.com/in/products/1090356>



DIN rail housing, 3U, Lock and Release system, width: 16.1 mm, height: 45.95 mm, depth: 8.8 mm, color: black (similar RAL 9005)

HSC-LR 3U KIT 9010 - Locking

1090351

<https://www.phoenixcontact.com/in/products/1090351>



DIN rail housing, 3U, Lock and Release system, width: 16.1 mm, height: 45.95 mm, depth: 8.8 mm, color: white (similar RAL 9010)

ME-IO 18,8 B/FE 10U TBUS 7035 - Mounting base housing



2202507

<https://www.phoenixcontact.com/in/products/2202507>

ME-IO 18,8 C 10U 5015 - Housing cover

1493573

<https://www.phoenixcontact.com/in/products/1493573>



DIN rail housing, 10U, Housing cover, width: 18.9 mm, height: 109.8 mm, depth: 26 mm, color: blue (similar RAL 5015)

ME-IO 18,8 C 10U 7035 - Housing cover

2202630

<https://www.phoenixcontact.com/in/products/2202630>



DIN rail housing, 10U, Housing cover, width: 18.9 mm, height: 109.8 mm, depth: 26 mm, color: light gray (similar RAL 7035)

ME-IO 18,8 B/FE 10U TBUS 7035 - Mounting base housing



2202507

<https://www.phoenixcontact.com/in/products/2202507>

ME-IO 18,8 C 2U 7035 - Housing cover

2201799

<https://www.phoenixcontact.com/in/products/2201799>



DIN rail housing, 2U, Housing cover, width: 18.9 mm, height: 21.8 mm, depth: 26 mm, color: light gray (similar RAL 7035)

ME-IO 18,8 C 2U 7035 VPE30 - Housing cover

2202611

<https://www.phoenixcontact.com/in/products/2202611>



DIN rail housing, 2U, Housing cover, width: 18.9 mm, height: 21.8 mm, depth: 26 mm, color: light gray (similar RAL 7035)

ME-IO 18,8 B/FE 10U TBUS 7035 - Mounting base housing



2202507

<https://www.phoenixcontact.com/in/products/2202507>

ME-IO 18,8 C 3U 7016 - Housing cover

1037322

<https://www.phoenixcontact.com/in/products/1037322>



DIN rail housing, 3U, Housing cover, width: 18.9 mm, height: 32.8 mm, depth: 26 mm, color: anthracite grey (similar RAL 7016)

ME-IO 18,8 C 3U 7035 - Housing cover

2201800

<https://www.phoenixcontact.com/in/products/2201800>



DIN rail housing, 3U, Housing cover, width: 18.9 mm, height: 32.8 mm, depth: 26 mm, color: light gray (similar RAL 7035)

ME-IO 18,8 B/FE 10U TBUS 7035 - Mounting base housing



2202507

<https://www.phoenixcontact.com/in/products/2202507>

ME-IO 18,8 C 3U S1 7035 - Housing cover

2201801

<https://www.phoenixcontact.com/in/products/2201801>

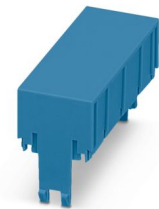


DIN rail housing, 3U, Housing cover, width: 18.9 mm, height: 32.8 mm, depth: 26 mm, color: light gray (similar RAL 7035)

ME-IO 18,8 C 4U 5015 - Housing cover

1486136

<https://www.phoenixcontact.com/in/products/1486136>



DIN rail housing, 4U, Housing cover, width: 18.9 mm, height: 43.8 mm, depth: 26 mm, color: blue (similar RAL 5015)

ME-IO 18,8 B/FE 10U TBUS 7035 - Mounting base housing



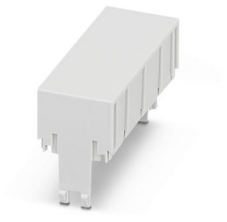
2202507

<https://www.phoenixcontact.com/in/products/2202507>

ME-IO 18,8 C 4U 7035 - Housing cover

2201802

<https://www.phoenixcontact.com/in/products/2201802>

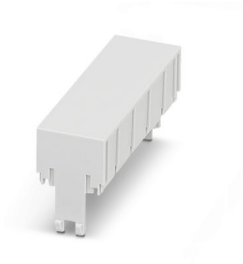


DIN rail housing, 4U, Housing cover, width: 18.9 mm, height: 43.8 mm, depth: 26 mm, color: light gray (similar RAL 7035)

ME-IO 18,8 C 5U 7035 - Housing cover

2201803

<https://www.phoenixcontact.com/in/products/2201803>



DIN rail housing, 5U, Housing cover, width: 18.9 mm, height: 54.8 mm, depth: 26 mm, color: light gray (similar RAL 7035)

ME-IO 18,8 B/FE 10U TBUS 7035 - Mounting base housing



2202507

<https://www.phoenixcontact.com/in/products/2202507>

ME-IO 18,8 C 6U 5015 - Housing cover

1493571

<https://www.phoenixcontact.com/in/products/1493571>



DIN rail housing, 6U, Housing cover, width: 18.9 mm, height: 65.8 mm, depth: 26 mm, color: blue (similar RAL 5015)

ME-IO 18,8 C 6U 7035 - Housing cover

2201804

<https://www.phoenixcontact.com/in/products/2201804>



DIN rail housing, 6U, Housing cover, width: 18.9 mm, height: 65.8 mm, depth: 26 mm, color: light gray (similar RAL 7035)

ME-IO 18,8 B/FE 10U TBUS 7035 - Mounting base housing



2202507

<https://www.phoenixcontact.com/in/products/2202507>

ME-IO 18,8 C 7U 7016 - Housing cover

1037321

<https://www.phoenixcontact.com/in/products/1037321>



DIN rail housing, 7U, Housing cover, width: 18.9 mm, height: 76.8 mm, depth: 26 mm, color: anthracite grey (similar RAL 7016)

ME-IO 18,8 C 7U 7035 - Housing cover

2201805

<https://www.phoenixcontact.com/in/products/2201805>



DIN rail housing, 7U, Housing cover, width: 18.9 mm, height: 76.8 mm, depth: 26 mm, color: light gray (similar RAL 7035)

ME-IO 18,8 B/FE 10U TBUS 7035 - Mounting base housing



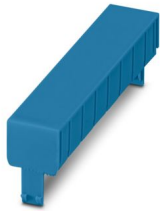
2202507

<https://www.phoenixcontact.com/in/products/2202507>

ME-IO 18,8 C 8U 5015 - Housing cover

1486137

<https://www.phoenixcontact.com/in/products/1486137>



DIN rail housing, 8U, Housing cover, width: 18.9 mm, height: 87.8 mm, depth: 26 mm, color: blue (similar RAL 5015)

ME-IO 18,8 C 8U 7016 - Housing cover

1205100

<https://www.phoenixcontact.com/in/products/1205100>



DIN rail housing, 8U, Housing cover, width: 18.9 mm, height: 87.8 mm, depth: 26 mm, color: anthracite grey (similar RAL 7016)

ME-IO 18,8 B/FE 10U TBUS 7035 - Mounting base housing



2202507

<https://www.phoenixcontact.com/in/products/2202507>

ME-IO 18,8 C 8U 7035 - Housing cover

2202634

<https://www.phoenixcontact.com/in/products/2202634>



DIN rail housing, 8U, Housing cover, width: 18.9 mm, height: 87.8 mm, depth: 26 mm, color: light gray (similar RAL 7035)

ME-IO 18,8 C 9U 7035 - Housing cover

2201806

<https://www.phoenixcontact.com/in/products/2201806>



DIN rail housing, 9U, Housing cover, width: 18.9 mm, height: 98.8 mm, depth: 26 mm, color: light gray (similar RAL 7035)

ME-IO 18,8 B/FE 10U TBUS 7035 - Mounting base housing



2202507

<https://www.phoenixcontact.com/in/products/2202507>

ME-IO 18,8 C 2U MC 7035 - Housing cover

2202616

<https://www.phoenixcontact.com/in/products/2202616>



DIN rail housing, 2U for marking lid, Housing cover, width: 18.9 mm, height: 21.9 mm, depth: 26 mm, color: light gray (similar RAL 7035)

ME-IO 18,8 C 2U MC10 7035 - Housing cover

2202582

<https://www.phoenixcontact.com/in/products/2202582>



DIN rail housing, 2U for marking lid, Housing cover, width: 18.9 mm, height: 21.9 mm, depth: 26 mm, color: light gray (similar RAL 7035)

ME-IO 18,8 B/FE 10U TBUS 7035 - Mounting base housing



2202507

<https://www.phoenixcontact.com/in/products/2202507>

ME-IO 18,8 C 2U MC18 7035 - Housing cover

2202581

<https://www.phoenixcontact.com/in/products/2202581>



DIN rail housing, 2U for marking lid, Housing cover, width: 18.9 mm, height: 21.9 mm, depth: 26 mm, color: light gray (similar RAL 7035)

ME-IO 18,8 C 2U MC10 5015 - Housing cover

1486134

<https://www.phoenixcontact.com/in/products/1486134>



DIN rail housing, 2U for marking lid, Housing cover, width: 18.9 mm, height: 21.9 mm, depth: 26 mm, color: blue (similar RAL 5015)

ME-IO 18,8 B/FE 10U TBUS 7035 - Mounting base housing



2202507

<https://www.phoenixcontact.com/in/products/2202507>

ME-IO 18,8 C 2U MC18 5015 - Housing cover

1486135

<https://www.phoenixcontact.com/in/products/1486135>

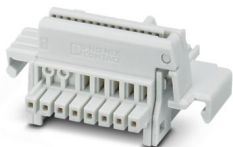


DIN rail housing, 2U for marking lid, Housing cover, width: 18.9 mm, height: 21.9 mm, depth: 26 mm, color: blue (similar RAL 5015)

TBUS8-18,8-PPPPPPPP-7035 - DIN rail bus connectors

2202396

<https://www.phoenixcontact.com/in/products/2202396>



DIN rail connector, color: light gray, nominal current: 6 A (parallel contacts), rated voltage (III/2): 32 V, number of positions: 8, product range: TBUS8-18,8..., pitch: 2.54 mm, mounting: DIN rail mounting, locking: without, mounting method: without, type of packaging: packed in cardboard, Item with gold-plated contacts, bus connectors for connecting with electronics housings, 8 parallel contacts

ME-IO 18,8 B/FE 10U TBUS 7035 - Mounting base housing



2202507

<https://www.phoenixcontact.com/in/products/2202507>

TBUS8-18,8-PPPPPPPS-7035 - DIN rail bus connectors

2202399

<https://www.phoenixcontact.com/in/products/2202399>

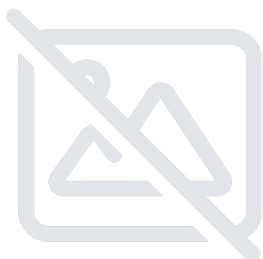


DIN rail connector, color: light gray, nominal current: 6 A, 4 A (parallel contacts) (Serial contacts), rated voltage (III/2): 32 V, number of positions: 8, product range: TBUS8-18,8..., pitch: 2.54 mm, mounting: DIN rail mounting, locking: without, mounting method: without, type of packaging: packed in cardboard, Item with gold-plated contacts, bus connectors for connecting with electronics housings, 7 parallel contacts/1 serial contact

TBUS8-18,8-PPPPPPSS-7035 - DIN rail bus connectors

2202403

<https://www.phoenixcontact.com/in/products/2202403>



DIN rail connector, color: light gray, nominal current: 6 A, 4 A (parallel contacts) (Serial contacts), rated voltage (III/2): 32 V, number of positions: 8, product range: TBUS8-18,8..., pitch: 2.54 mm, mounting: DIN rail mounting, locking: without, mounting method: without, type of packaging: packed in cardboard, Item with gold-plated contacts, bus connectors for connecting with electronics housings, 6 parallel contacts/2 serial contacts

ME-IO 18,8 B/FE 10U TBUS 7035 - Mounting base housing



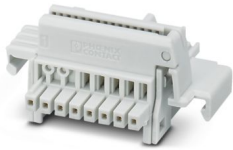
2202507

<https://www.phoenixcontact.com/in/products/2202507>

TBUS8-18,8-PPPPSSSS-7035 - DIN rail bus connectors

1140958

<https://www.phoenixcontact.com/in/products/1140958>



DIN rail connector, color: light gray, nominal current: 6 A, 4 A (parallel contacts) (Serial contacts), rated voltage (III/2): 32 V, number of positions: 8, product range: TBUS8-18,8..., pitch: 2.54 mm, mounting: DIN rail mounting, locking: without, mounting method: without, type of packaging: packed in cardboard, Item with gold-plated contacts, bus connectors for connecting with electronics housings, 4 parallel contacts/4 serial contacts

TBUS8-18,8-BRIDGE-7035 - DIN rail bus connectors

1387014

<https://www.phoenixcontact.com/in/products/1387014>



DIN rail bus adapter for ME-IO, overall width: 18.8 mm, 8 parallel positions, color: light grey (similar to RAL 7035)

ME-IO 18,8 B/FE 10U TBUS 7035 - Mounting base housing



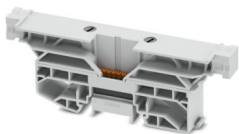
2202507

<https://www.phoenixcontact.com/in/products/2202507>

TBUS8-SPL-KIT-7035 - DIN rail bus connectors

1488805

<https://www.phoenixcontact.com/in/products/1488805>

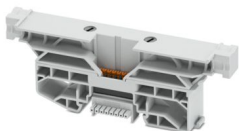


DIN rail connector, nominal cross section: 0.5 mm², color: light gray, nominal current: 6 A (parallel contacts), rated voltage (III/2): 32 V, contact surface: Au, contact connection type: Socket, number of potentials: 8, number of positions: 8, number of connections: 8, product range: TBUS8..2,54, pitch: 2.54 mm, connection method: Push-in spring connection, mounting: DIN rail mounting, conductor/PCB connection direction: 0 °, locking: Snap-in locking, mounting method: without, type of packaging: packed in cardboard, Integrated end bracket function

TBUS8-TAP-KIT-7035 - DIN rail bus connectors

1488806

<https://www.phoenixcontact.com/in/products/1488806>



DIN rail connector, nominal cross section: 0.5 mm², color: light gray, nominal current: 6 A (parallel contacts), rated voltage (III/2): 32 V, contact surface: Au, contact connection type: Socket, number of potentials: 8, number of positions: 8, number of connections: 8, product range: TBUS8..2,54, pitch: 2.54 mm, connection method: Push-in spring connection, mounting: DIN rail mounting, conductor/PCB connection direction: 0 °, locking: Snap-in locking, mounting method: without, type of packaging: packed in cardboard, Integrated end bracket function

ME-IO 18,8 B/FE 10U TBUS 7035 - Mounting base housing



2202507

<https://www.phoenixcontact.com/in/products/2202507>

ME 18,8 TBUS 1,5/5-ST-3,81KMGY - DIN rail bus connectors

2201813

<https://www.phoenixcontact.com/in/products/2201813>



DIN rail connector, color: light gray, nominal current: 8 A (parallel contacts), rated voltage (III/2): 125 V, number of positions: 5, product range: TBUS5-18,8..., pitch: 3.81 mm, mounting: DIN rail mounting, locking: without, mounting method: without, type of packaging: packed in cardboard, Item with gold-plated contacts, bus connectors for connecting with electronics housings, 5 parallel contacts

ME 18,8 TBUS 1,5/5 VPE1 KMGY - DIN rail bus connectors

2202549

<https://www.phoenixcontact.com/in/products/2202549>



DIN rail connector, color: light gray, nominal current: 8 A (parallel contacts), rated voltage (III/2): 125 V, number of positions: 5, product range: TBUS5-18,8..., pitch: 3.81 mm, mounting: DIN rail mounting, locking: without, mounting method: without, type of packaging: packed in cardboard, Item with gold-plated contacts, bus connectors for connecting with electronics housings, 5 parallel contacts

ME-IO 18,8 B/FE 10U TBUS 7035 - Mounting base housing



2202507

<https://www.phoenixcontact.com/in/products/2202507>

HS LC-H-D2C/ R2XC1-2,54 - Fiber optic

1036658

<https://www.phoenixcontact.com/in/products/1036658>



Multiple light guides with glare protection, passive, rigid, Raised head, conical, emission surface: spherical, number of displays: 2, (2 rows, 1 column), pitch: 2.54 mm, ESD protection: <8 kV, can be used for the ME, ME-MAX, ME-IO, ME PLC, and EH housing ranges (housing must be processed)

HS LC-H-D2C/ R2XC2-2,54 - Fiber optic

1043044

<https://www.phoenixcontact.com/in/products/1043044>



Multiple light guides with glare protection, passive, rigid, Raised head, conical, emission surface: spherical, number of displays: 4, (2 rows, 2 columns), pitch: 2.54 mm, ESD protection: <8 kV, can be used for the ME, ME-MAX, ME-IO, ME PLC, and EH housing ranges (housing must be processed)

ME-IO 18,8 B/FE 10U TBUS 7035 - Mounting base housing



2202507

<https://www.phoenixcontact.com/in/products/2202507>

HS LC-H-D2C/ R2XC4-2,54 - Fiber optic

1036724

<https://www.phoenixcontact.com/in/products/1036724>



Multiple light guides with glare protection, passive, rigid, Raised head, conical, emission surface: spherical, number of displays: 8, (2 rows, 4 columns), pitch: 2.54 mm, ESD protection: <8 kV, can be used for the ME, ME-MAX, ME-IO, ME PLC, and EH housing ranges (housing must be processed)

HS LC-H-D2C/ R2XC5-2,54 - Fiber optic

1071310

<https://www.phoenixcontact.com/in/products/1071310>



Multiple light guides with glare protection, passive, rigid, Raised head, conical, emission surface: spherical, number of displays: 10, (2 rows, 5 columns), pitch: 2.54 mm, ESD protection: <8 kV, can be used for the ME, ME-MAX, ME-IO, ME PLC, and EH housing ranges (housing must be processed)

ME-IO 18,8 B/FE 10U TBUS 7035 - Mounting base housing



2202507

<https://www.phoenixcontact.com/in/products/2202507>

HS LC-H-D2C/ R2XC10-2,54 - Fiber optic

1071314

<https://www.phoenixcontact.com/in/products/1071314>



Multiple light guides with glare protection, passive, rigid, Raised head, conical, emission surface: spherical, number of displays: 20, (2 rows, 10 columns), pitch: 2.54 mm, ESD protection: <8 kV, can be used for the ME, ME-MAX, ME-IO, ME PLC, and EH housing ranges (housing must be processed)

HS LC-H-D2C/ R4XC2-2,54 - Fiber optic

1071316

<https://www.phoenixcontact.com/in/products/1071316>



Multiple light guides with glare protection, passive, rigid, Raised head, conical, emission surface: spherical, number of displays: 8, (4 rows, 2 columns), pitch: 2.54 mm, ESD protection: <8 kV, can be used for the ME, ME-MAX, ME-IO, ME PLC, and EH housing ranges (housing must be processed)

ME-IO 18,8 B/FE 10U TBUS 7035 - Mounting base housing



2202507

<https://www.phoenixcontact.com/in/products/2202507>

HS LC-H-D2C/ R4XC4-2,54 - Fiber optic

1036727

<https://www.phoenixcontact.com/in/products/1036727>

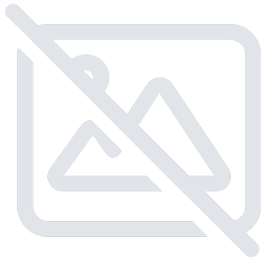


Multiple light guides with glare protection, passive, rigid, Raised head, conical, emission surface: spherical, number of displays: 16, (4 rows, 4 columns), pitch: 2.54 mm, ESD protection: <8 kV, can be used for the ME, ME-MAX, ME-IO, ME PLC, and EH housing ranges (housing must be processed)

HS LC-H-D2C/ R4XC5-2,54 - Fiber optic

1071318

<https://www.phoenixcontact.com/in/products/1071318>



Multiple light guides with glare protection, passive, rigid, Raised head, conical, emission surface: spherical, number of displays: 20, (4 rows, 5 columns), pitch: 2.54 mm, ESD protection: <8 kV, can be used for the ME, ME-MAX, ME-IO, ME PLC, and EH housing ranges (housing must be processed)

ME-IO 18,8 B/FE 10U TBUS 7035 - Mounting base housing



2202507

<https://www.phoenixcontact.com/in/products/2202507>

HS LC-H-D2C/ R4XC9-2,54 - Fiber optic

1071321

<https://www.phoenixcontact.com/in/products/1071321>



Multiple light guides with glare protection, passive, rigid, Raised head, conical, emission surface: spherical, number of displays: 36, (4 rows, 9 columns), pitch: 2.54 mm, ESD protection: <8 kV, can be used for the ME, ME-MAX, ME-IO, ME PLC, and EH housing ranges (housing must be processed)

HS LC-H-D2C/ R4XC10-2,54 - Fiber optic

1071329

<https://www.phoenixcontact.com/in/products/1071329>



Multiple light guides with glare protection, passive, rigid, Raised head, conical, emission surface: spherical, number of displays: 40, (4 rows, 10 columns), pitch: 2.54 mm, ESD protection: <8 kV, can be used for the ME, ME-MAX, ME-IO, ME PLC, and EH housing ranges (housing must be processed)

ME-IO 18,8 B/FE 10U TBUS 7035 - Mounting base housing



2202507

<https://www.phoenixcontact.com/in/products/2202507>

HSCP-CB 2U-7035 - Fastening clip

1056724

<https://www.phoenixcontact.com/in/products/1056724>

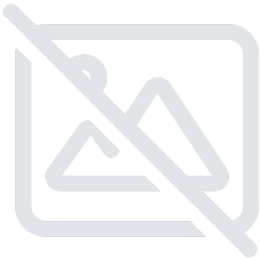


ME-IO Blockbelt, for 2 PCB connectors, color: light gray (similar RAL 7035)

HSCP-CB 3U-7035 - Fastening clip

1056723

<https://www.phoenixcontact.com/in/products/1056723>



ME-IO Blockbelt, for 3 PCB connectors, color: light gray (similar RAL 7035)

ME-IO 18,8 B/FE 10U TBUS 7035 - Mounting base housing



2202507

<https://www.phoenixcontact.com/in/products/2202507>

HSCP-CB 4U-7035 - Fastening clip

1056722

<https://www.phoenixcontact.com/in/products/1056722>



ME-IO Blockbelt, for 4 PCB connectors, color: light gray (similar RAL 7035)

HSCP-CB 5U-7035 - Fastening clip

1056892

<https://www.phoenixcontact.com/in/products/1056892>



ME-IO Blockbelt, for 5 PCB connectors, color: light gray (similar RAL 7035)

ME-IO 18,8 B/FE 10U TBUS 7035 - Mounting base housing



2202507

<https://www.phoenixcontact.com/in/products/2202507>

HSCP-CB 6U-7035 - Fastening clip

1037100

<https://www.phoenixcontact.com/in/products/1037100>



ME-IO Blockbelt, for 6 PCB connectors, color: light gray (similar RAL 7035)

CUC-SP-J1ST-A/R4LB-SMD - RJ45 PCB connector

1149874

<https://www.phoenixcontact.com/in/products/1149874>



RJ45 PCB connector, degree of protection: IP20, number of positions: 8, 10 Gbps, material: Metal, connection method: SMD reflow

ME-IO 18,8 B/FE 10U TBUS 7035 - Mounting base housing



2202507

<https://www.phoenixcontact.com/in/products/2202507>

SPE-T1-STRM-90 - SPE PCB connector

1163797

<https://www.phoenixcontact.com/in/products/1163797>



SPE PCB connector, design: IEC 63171-2, degree of protection: IP20, number of positions: 2, 1 Gbps, CAT B (ISO/IEC 63171), material: Metal, connection method: THR solder connection, cable outlet: straight, Single Pair Ethernet

CUC-USB3.1-J1ST-AH/UCF-SMD/THR - USB PCB connectors

1332643

<https://www.phoenixcontact.com/in/products/1332643>



USB PCB connectors, degree of protection: IP20, number of positions: 24, 10 Gbps, material: Metal, connection method: Solder connection, USB 3.0

ME-IO 18,8 B/FE 10U TBUS 7035 - Mounting base housing



2202507

<https://www.phoenixcontact.com/in/products/2202507>

CUC-USB2.0-J1ST-AH/UAF-SMD - USB PCB connectors

1332634

<https://www.phoenixcontact.com/in/products/1332634>



USB PCB connectors, degree of protection: IP20, number of positions: 4, 480 Mbps, material: Metal, connection method: Solder connection, USB 2.0

CUC-COX-J1M-A/KFS - Coaxial PCB connector

1340151

<https://www.phoenixcontact.com/in/products/1340151>



Coaxial PCB connector, degree of protection: IP20, number of positions: 1, 12 Gbps, material: Metal, connection method: Solder connection, cable outlet: straight, for additional information, see the product range drawing in the Download Center

ME-IO 18,8 B/FE 10U TBUS 7035 - Mounting base housing



2202507

<https://www.phoenixcontact.com/in/products/2202507>

FP 0,8/ 12-FV-SH 7,85 - SMD female connector shielded

1043682

<https://www.phoenixcontact.com/in/products/1043682>



Shielded SMD female connector, nominal current: 1.7 A, test voltage: 500 V AC, number of positions: 12, pitch: 0.8 mm, color: black, contact surface: Au, contact connection type: Socket, mounting: SMD soldering

FP 0,8/ 12-MV-SH 8,65 - SMD male connector, shielded

1154119

<https://www.phoenixcontact.com/in/products/1154119>



shielded SMD male connector, nominal current: 1.7 A, test voltage: 500 V AC, number of positions: 12, pitch: 0.8 mm, color: black, contact surface: Au, contact connection type: Pin, mounting: SMD soldering

ME-IO 18,8 B/FE 10U TBUS 7035 - Mounting base housing



2202507

<https://www.phoenixcontact.com/in/products/2202507>

FP 0,8/ 20-FV-SH 7,85 - SMD female connector shielded

1053614

<https://www.phoenixcontact.com/in/products/1053614>



Shielded SMD female connector, nominal current: 1.7 A, test voltage: 500 V AC, number of positions: 20, pitch: 0.8 mm, color: black, contact surface: Au, contact connection type: Socket, mounting: SMD soldering

FP 0,8/ 20-MV-SH 8,65 - SMD male connector, shielded

1154120

<https://www.phoenixcontact.com/in/products/1154120>



shielded SMD male connector, nominal current: 1.7 A, test voltage: 500 V AC, number of positions: 20, pitch: 0.8 mm, color: black, contact surface: Au, contact connection type: Pin, mounting: SMD soldering

ME-IO 18,8 B/FE 10U TBUS 7035 - Mounting base housing



2202507

<https://www.phoenixcontact.com/in/products/2202507>

FP 0,8/ 32-FV-SH 7,85 - SMD female connector shielded

1043683

<https://www.phoenixcontact.com/in/products/1043683>



Shielded SMD female connector, nominal current: 1.7 A, test voltage: 500 V AC, number of positions: 32, pitch: 0.8 mm, color: black, contact surface: Au, contact connection type: Socket, mounting: SMD soldering

FP 0,8/ 32-MV-SH 8,65 - SMD male connector, shielded

1154121

<https://www.phoenixcontact.com/in/products/1154121>



shielded SMD male connector, nominal current: 1.7 A, test voltage: 500 V AC, number of positions: 32, pitch: 0.8 mm, color: black, contact surface: Au, contact connection type: Pin, mounting: SMD soldering

ME-IO 18,8 B/FE 10U TBUS 7035 - Mounting base housing



2202507

<https://www.phoenixcontact.com/in/products/2202507>

FP 0,8/ 52-FV-SH 7,85 - SMD female connector shielded

1043684

<https://www.phoenixcontact.com/in/products/1043684>

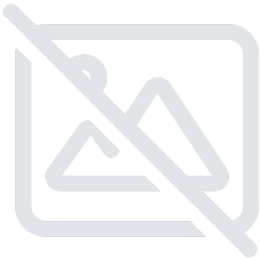


Shielded SMD female connector, nominal current: 1.7 A, test voltage: 500 V AC, number of positions: 52, pitch: 0.8 mm, color: black, contact surface: Au, contact connection type: Socket, mounting: SMD soldering

FP 0,8/ 52-MV-SH 8,65 - SMD male connector, shielded

1154122

<https://www.phoenixcontact.com/in/products/1154122>



shielded SMD male connector, nominal current: 1.7 A, test voltage: 500 V AC, number of positions: 52, pitch: 0.8 mm, color: black, contact surface: Au, contact connection type: Pin, mounting: SMD soldering

ME-IO 18,8 B/FE 10U TBUS 7035 - Mounting base housing



2202507

<https://www.phoenixcontact.com/in/products/2202507>

FP 0,8/ 80-FV-SH 7,85 - SMD female connector shielded

1043685

<https://www.phoenixcontact.com/in/products/1043685>



Shielded SMD female connector, nominal current: 1.7 A, test voltage: 500 V AC, number of positions: 80, pitch: 0.8 mm, color: black, contact surface: Au, contact connection type: Socket, mounting: SMD soldering

FP 0,8/ 80-MV-SH 8,65 - SMD male connector, shielded

1154123

<https://www.phoenixcontact.com/in/products/1154123>



shielded SMD male connector, nominal current: 1.7 A, test voltage: 500 V AC, number of positions: 80, pitch: 0.8 mm, color: black, contact surface: Au, contact connection type: Pin, mounting: SMD soldering

ME-IO 18,8 B/FE 10U TBUS 7035 - Mounting base housing



2202507

<https://www.phoenixcontact.com/in/products/2202507>

FP 0,8/ 12-FV 7,85 - SMD female connectors

1061580

<https://www.phoenixcontact.com/in/products/1061580>



SMD female connector, nominal current: 1.7 A, test voltage: 500 V AC, number of positions: 12, pitch: 0.8 mm, color: black, contact surface: Au, contact connection type: Socket, mounting: SMD soldering

FP 0,8/ 12-MV 8,65 - SMD male connectors

1154012

<https://www.phoenixcontact.com/in/products/1154012>



SMD male connector, nominal current: 1.7 A, test voltage: 500 V AC, number of positions: 12, pitch: 0.8 mm, color: black, contact surface: Au, contact connection type: Pin, mounting: SMD soldering

ME-IO 18,8 B/FE 10U TBUS 7035 - Mounting base housing



2202507

<https://www.phoenixcontact.com/in/products/2202507>

FP 0,8/ 20-FV 7,85 - SMD female connectors

1061583

<https://www.phoenixcontact.com/in/products/1061583>



SMD female connector, nominal current: 1.7 A, test voltage: 500 V AC, number of positions: 20, pitch: 0.8 mm, color: black, contact surface: Au, contact connection type: Socket, mounting: SMD soldering

FP 0,8/ 20-MV 8,65 - SMD male connectors

1154013

<https://www.phoenixcontact.com/in/products/1154013>



SMD male connector, nominal current: 1.7 A, test voltage: 500 V AC, number of positions: 20, pitch: 0.8 mm, color: black, contact surface: Au, contact connection type: Pin, mounting: SMD soldering

ME-IO 18,8 B/FE 10U TBUS 7035 - Mounting base housing



2202507

<https://www.phoenixcontact.com/in/products/2202507>

FP 0,8/ 32-FV 7,85 - SMD female connectors

1061584

<https://www.phoenixcontact.com/in/products/1061584>



SMD female connector, nominal current: 1.7 A, test voltage: 500 V AC, number of positions: 32, pitch: 0.8 mm, color: black, contact surface: Au, contact connection type: Socket, mounting: SMD soldering

FP 0,8/ 32-MV 8,65 - SMD male connectors

1154014

<https://www.phoenixcontact.com/in/products/1154014>



SMD male connector, nominal current: 1.7 A, test voltage: 500 V AC, number of positions: 32, pitch: 0.8 mm, color: black, contact surface: Au, contact connection type: Pin, mounting: SMD soldering

ME-IO 18,8 B/FE 10U TBUS 7035 - Mounting base housing



2202507

<https://www.phoenixcontact.com/in/products/2202507>

FP 0,8/ 52-FV 7,85 - SMD female connectors

1061585

<https://www.phoenixcontact.com/in/products/1061585>



SMD female connector, nominal current: 1.7 A, test voltage: 500 V AC, number of positions: 52, pitch: 0.8 mm, color: black, contact surface: Au, contact connection type: Socket, mounting: SMD soldering

FP 0,8/ 52-MV 8,65 - SMD male connectors

1154015

<https://www.phoenixcontact.com/in/products/1154015>



SMD male connector, nominal current: 1.7 A, test voltage: 500 V AC, number of positions: 52, pitch: 0.8 mm, color: black, contact surface: Au, contact connection type: Pin, mounting: SMD soldering

ME-IO 18,8 B/FE 10U TBUS 7035 - Mounting base housing



2202507

<https://www.phoenixcontact.com/in/products/2202507>

FP 0,8/ 80-FV 7,85 - SMD female connectors

1061586

<https://www.phoenixcontact.com/in/products/1061586>



SMD female connector, nominal current: 1.7 A, test voltage: 500 V AC, number of positions: 80, pitch: 0.8 mm, color: black, contact surface: Au, contact connection type: Socket, mounting: SMD soldering

FP 0,8/ 80-MV 8,65 - SMD male connectors

1154016

<https://www.phoenixcontact.com/in/products/1154016>



SMD male connector, nominal current: 1.7 A, test voltage: 500 V AC, number of positions: 80, pitch: 0.8 mm, color: black, contact surface: Au, contact connection type: Pin, mounting: SMD soldering

ME-IO 18,8 B/FE 10U TBUS 7035 - Mounting base housing



2202507

<https://www.phoenixcontact.com/in/products/2202507>

ME BUS FE CONTACT - Functional ground contact

2278076

<https://www.phoenixcontact.com/in/products/2278076>



DIN rail housing, FE contact, width: 5 mm, height: 15.25 mm, depth: 9.5 mm

ME-IO 18,8 FOOT CATCH KIT - Base latch

2201812

<https://www.phoenixcontact.com/in/products/2201812>



Base latch, for DIN rail mounting, with spring included

ME-IO 18,8 B/FE 10U TBUS 7035 - Mounting base housing



2202507

<https://www.phoenixcontact.com/in/products/2202507>

HSC-LR SP - Spring

2202599

<https://www.phoenixcontact.com/in/products/2202599>

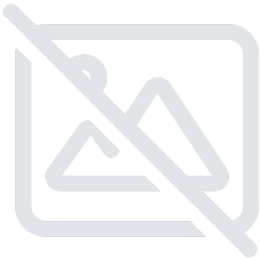


Coil spring for Lock & Release lever for ME-IO housing

ME-IO 18,8 F-LR 7035 - Filler plug

2202635

<https://www.phoenixcontact.com/in/products/2202635>



DIN rail housing, Filler plug, for closing the Lock and Release area, width: 11.7 mm, height: 16.1 mm, depth: 10.6 mm, color: light gray (similar RAL 7035)

ME-IO 18,8 B/FE 10U TBUS 7035 - Mounting base housing



2202507

<https://www.phoenixcontact.com/in/products/2202507>

ME-IO 18,8 F-LR 1018 - Filler plug

1426876

<https://www.phoenixcontact.com/in/products/1426876>



DIN rail housing, Filler plug, for closing the Lock and Release area, width: 11.7 mm, height: 16.1 mm, depth: 10.6 mm, color: yellow (similar RAL 1018)

ME-IO 18,8 F-LR 5015 - Filler plug

1493575

<https://www.phoenixcontact.com/in/products/1493575>



DIN rail housing, Filler plug, for closing the Lock and Release area, width: 11.7 mm, height: 16.1 mm, depth: 10.6 mm, color: blue (similar RAL 5015)

ME-IO 18,8 B/FE 10U TBUS 7035 - Mounting base housing



2202507

<https://www.phoenixcontact.com/in/products/2202507>

ME-IO 18,8 F-LR 7035 VPE200 - Filler plug

2203224

<https://www.phoenixcontact.com/in/products/2203224>



DIN rail housing, Filler plug, for closing the Lock and Release area, width: 11.7 mm, height: 16.1 mm, depth: 10.6 mm, color: light gray (similar RAL 7035)

CP-DMC 1,5 NAT - Coding profile

1790647

<https://www.phoenixcontact.com/in/products/1790647>



Coding profile, for insertion between the coding ribs of the connector and the header following the reflow soldering process, insulating material, color: natural

ME-IO 18,8 B/FE 10U TBUS 7035 - Mounting base housing



2202507

<https://www.phoenixcontact.com/in/products/2202507>

EMT (80X15,5)R - Insert label

0804286

<https://www.phoenixcontact.com/in/products/0804286>



Insert label, for marking the marking cover for the ME-IO housing system, for marking Phoenix Contact marking covers for the ME-IO housing system, Roll, white, unlabeled, can be labeled with: THERMOMARK E.300 (D)/600 (D), THERMOMARK ROLL 2.0, THERMOMARK ROLL, THERMOMARK ROLL X1, THERMOMARK ROLLMaster 300/600, THERMOMARK X1.2, mounting type: insert, Number of individual labels: 100, text field height: 15.5 mm, text field width: 80 mm

ME-IO 18,8 MC 8U TRANS - Marking lid

2202627

<https://www.phoenixcontact.com/in/products/2202627>



DIN rail housing, 8U, Marking lid, width: 18.8 mm, height: 110.95 mm, color: transparent

ME-IO 18,8 B/FE 10U TBUS 7035 - Mounting base housing



2202507

<https://www.phoenixcontact.com/in/products/2202507>

MPS-MT 1-S4-B RD - Accessories

1982800

<https://www.phoenixcontact.com/in/products/1982800>



Test plug terminal block

CRIMPFOX 6 - Crimping pliers

1212034

<https://www.phoenixcontact.com/in/products/1212034>



Crimping pliers, for ferrules without insulating collar according to DIN 46228 Part 1 and ferrules with insulating collar according to DIN 46228 Part 4, 0.25 mm² ... 6.0 mm², lateral entry, trapezoidal crimp

ME-IO 18,8 B/FE 10U TBUS 7035 - Mounting base housing



2202507

<https://www.phoenixcontact.com/in/products/2202507>

SZS 0,4X2,5 VDE - Screwdriver

1205037

<https://www.phoenixcontact.com/in/products/1205037>



Screwdriver, slot-headed, VDE insulated, size: 0.4 x 2.5 x 80 mm, 2-component grip, with non-slip grip

NS 35/15 PERF 2000MM - DIN rail perforated

1201730

<https://www.phoenixcontact.com/in/products/1201730>



DIN rail perforated, Pack of 25 (50 m), similar to EN 60715, material: Steel, galvanized, passivated with a thick layer, Standard profile, color: silver

ME-IO 18,8 B/FE 10U TBUS 7035 - Mounting base housing



2202507

<https://www.phoenixcontact.com/in/products/2202507>

NS 35/15 UNPERF 2000MM - DIN rail, unperforated

1201714

<https://www.phoenixcontact.com/in/products/1201714>

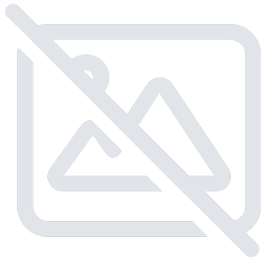


DIN rail, unperforated, Pack of 25 (50 m), similar to EN 60715, material: Steel, galvanized, passivated with a thick layer, Standard profile, color: silver

NS 35/15 WH PERF 2000MM - DIN rail perforated

0806602

<https://www.phoenixcontact.com/in/products/0806602>



DIN rail perforated, Pack of 25 (50 m), similar to EN 60715, material: Steel, galvanized, white passivated, Standard profile, color: white

ME-IO 18,8 B/FE 10U TBUS 7035 - Mounting base housing



2202507

<https://www.phoenixcontact.com/in/products/2202507>

NS 35/15 WH UNPERF 2000MM-VPE 10 - DIN rail, unperforated

1204135

<https://www.phoenixcontact.com/in/products/1204135>



DIN rail, unperforated, Pack of 10 (20 m), similar to EN 60715, material: Steel, galvanized, white passivated, Standard profile, color: silver

NS 35/15 AL UNPERF 2000MM - DIN rail, unperforated

1201756

<https://www.phoenixcontact.com/in/products/1201756>



DIN rail, unperforated, similar to EN 60715, material: Aluminum, uncoated, Standard profile, color: silver

ME-IO 18,8 B/FE 10U TBUS 7035 - Mounting base housing



2202507

<https://www.phoenixcontact.com/in/products/2202507>

NS 35/15 ZN PERF 2000MM - DIN rail perforated

1206599

<https://www.phoenixcontact.com/in/products/1206599>

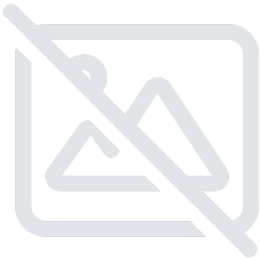


DIN rail perforated, Pack of 25 (50 m), similar to EN 60715, material: Steel, galvanized, Standard profile, color: silver

NS 35/15 ZN UNPERF 2000MM - DIN rail, unperforated

1206586

<https://www.phoenixcontact.com/in/products/1206586>



DIN rail, unperforated, Pack of 25 (50 m), similar to EN 60715, material: Steel, galvanized, Standard profile, color: silver

ME-IO 18,8 B/FE 10U TBUS 7035 - Mounting base housing



2202507

<https://www.phoenixcontact.com/in/products/2202507>

NS 35/15 CU UNPERF 2000MM-VPE 10 - DIN rail, unperforated

1201895

<https://www.phoenixcontact.com/in/products/1201895>



DIN rail, unperforated, Pack of 10 (20 m), similar to EN 60715, material: Copper, uncoated, Standard profile, color: copper-colored

NS 35/15 CAP - End cap

1206573

<https://www.phoenixcontact.com/in/products/1206573>



DIN rail end piece, for DIN rail NS 35/15

ME-IO 18,8 B/FE 10U TBUS 7035 - Mounting base housing



2202507

<https://www.phoenixcontact.com/in/products/2202507>

NS 35/15-2,3 UNPERF 2000MM-VPE 10 - DIN rail, unperforated

1201798

<https://www.phoenixcontact.com/in/products/1201798>



DIN rail, unperforated, Pack of 10 (20 m), acc. to EN 60715, material: Steel, galvanized, passivated with a thick layer, Standard profile 2.3 mm, color: silver

NS 35/ 7,5 PERF 2000MM - DIN rail perforated

0801733

<https://www.phoenixcontact.com/in/products/0801733>



DIN rail perforated, Pack of 25 (50 m), acc. to EN 60715, material: Steel, galvanized, passivated with a thick layer, Standard profile, color: silver

ME-IO 18,8 B/FE 10U TBUS 7035 - Mounting base housing



2202507

<https://www.phoenixcontact.com/in/products/2202507>

NS 35/ 7,5 UNPERF 2000MM - DIN rail, unperforated

0801681

<https://www.phoenixcontact.com/in/products/0801681>



DIN rail, unperforated, Pack of 25 (50 m), acc. to EN 60715, material: Steel, galvanized, passivated with a thick layer, Standard profile, color: silver

NS 35/ 7,5 WH PERF 2000MM - DIN rail perforated

1204119

<https://www.phoenixcontact.com/in/products/1204119>



DIN rail perforated, Pack of 25 (50 m), acc. to EN 60715, material: Steel, galvanized, white passivated, Standard profile, color: silver

ME-IO 18,8 B/FE 10U TBUS 7035 - Mounting base housing



2202507

<https://www.phoenixcontact.com/in/products/2202507>

NS 35/ 7,5 WH UNPERF 2000MM-VPE 10 - DIN rail, unperforated

1204122

<https://www.phoenixcontact.com/in/products/1204122>



DIN rail, unperforated, Pack of 10 (20 m), acc. to EN 60715, material: Steel, galvanized, white passivated, Standard profile, color: silver

NS 35/ 7,5 AL UNPERF 2000MM - DIN rail, unperforated

0801704

<https://www.phoenixcontact.com/in/products/0801704>



DIN rail, unperforated, Pack of 25 (50 m), acc. to EN 60715, material: Aluminum, uncoated, Standard profile, color: silver

ME-IO 18,8 B/FE 10U TBUS 7035 - Mounting base housing



2202507

<https://www.phoenixcontact.com/in/products/2202507>

NS 35/ 7,5 ZN PERF 2000MM - DIN rail perforated

1206421

<https://www.phoenixcontact.com/in/products/1206421>



DIN rail perforated, Pack of 25 (50 m), acc. to EN 60715, material: Steel, galvanized, Standard profile, color: silver

NS 35/ 7,5 ZN UNPERF 2000MM - DIN rail, unperforated

1206434

<https://www.phoenixcontact.com/in/products/1206434>



DIN rail, unperforated, Pack of 25 (50 m), acc. to EN 60715, material: Steel, galvanized, Standard profile, color: silver

ME-IO 18,8 B/FE 10U TBUS 7035 - Mounting base housing



2202507

<https://www.phoenixcontact.com/in/products/2202507>

NS 35/ 7,5 CU UNPERF 2000MM-VPE 10 - DIN rail, unperforated

0801762

<https://www.phoenixcontact.com/in/products/0801762>



DIN rail, unperforated, Pack of 10 (20 m), acc. to EN 60715, material: Copper, uncoated, Standard profile, color: copper-colored

NS 35/ 7,5 CAP - End cap

1206560

<https://www.phoenixcontact.com/in/products/1206560>



DIN rail end piece, for DIN rail NS 35/7.5

Phoenix Contact 2025 © - all rights reserved
<https://www.phoenixcontact.com>

PHOENIX CONTACT (I) Pvt. Ltd.
A-58/2, Okhla Industrial Area, Phase - II, New Delhi-110 020

+91.1275.71420
info@phoenixcontact.co.in