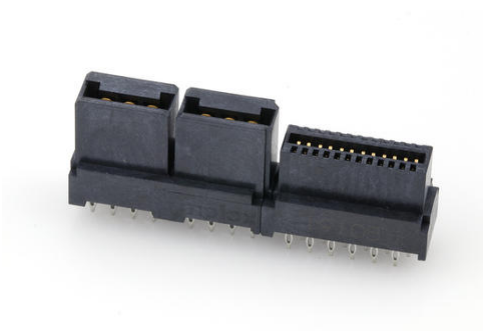




Part Number : [461144241](#)
Product Description : 1.27mm, 12.00mm Pitch,
EXTreme LPHPower Receptacle Header, Vertical, 4
Power Contacts, 24 Signal Contacts, Select Gold (Au)
Plating, without BMI Guides
Series Number : 46114
Status : Active
Product Category : Board-to-Board Connectors



Documents & Resources

Drawings

[461144241 sd.pdf](#)
[PK-46114-003-001.pdf](#)

3D Models and Design Files


[STEP AP242](#)
[SOLIDWORKS](#)
[Creo](#)
[Symbol and Footprint \(Multi-Format\)](#)
[SYM-46114-4241-001.zip](#)

Specifications

[AS-46114-001-001.pdf](#)
[PS-46114-001-001.pdf](#)

Product Environment Compliance

Compliance

GADSL/IMDS	Not Relevant
China RoHS	 per SJ/T 11365-2006
EU ELV	Not Relevant
Low-Halogen Status	Low-Halogen per IEC 61249-2-21
REACH SVHC	Not Contained per D(2025)4165-DC (25 June 2025)
EU RoHS	Compliant per EU 2015/863

Compliance Statements

- EU RoHS
- REACH SVHC
- Low-Halogen

Industry Documents

- IPC 1752A Class C
- IPC 1752A Class D
- Molex Product Compliance Declaration
- IEC-62474
- chemSHERPA (xml)

Substances of Interest

- PFAS

EU RoHS Certificate of Compliance

Additional Product Compliance Information

Part Details

General

Status	Active
Category	Board-to-Board Connectors
Series	46114
Description	1.27mm, 12.00mm Pitch, EXTreme LPHPower Receptacle Header, Vertical, 4 Power Contacts, 24 Signal Contacts, Select Gold (Au) Plating, without BMI Guides
Application	Board-to-Board, Power
Comments	Press Fit Pin
Component Type	PCB Receptacle
Product Name	EXTreme LPHPower
UPC	800756872209

Agency

CSA	LR19880
UL	E29179

Electrical

Current - Maximum per Contact	30.0A
-------------------------------	-------

Grounding to PCB	No
Voltage - Maximum	250V AC (RMS)/DC

Physical

Circuits (Loaded)	28
Circuits (maximum)	28
Color - Resin	Black
Durability (mating cycles max)	250
Flammability	94V-0
Glow-Wire Capable	No
Guide to Mating Part	No
Keying to Mating Part	None
Lock to Mating Part	None
Material - Metal	High Performance Alloy (HPA)
Material - Plating Mating	Gold
Material - Plating Termination	Tin
Material - Resin	High Temperature Thermoplastic
Net Weight	5.790/g
Number of Rows	2
Orientation	Vertical
Packaging Type	Tube
PCB Locator	No
PCB Retention	None
Pitch - Mating Interface	1.27mm, 12.00mm
Pitch - Termination Interface	1.27mm, 2.50mm
Plating min - Mating	0.762µm
Plating min - Termination	2.540µm
Polarized to Mating Part	Yes
Polarized to PCB	Yes
(p)ower-(s)ignal Configuration	4p - 24s
Stackable	No
Temperature Range - Operating	-40° to +105°C
Termination Interface Style	Through Hole - Compliant Pin

Solder Process Data

Lead-Free Process Capability	N/A
------------------------------	-----

Mates With / Use With

Mates with Part(s)

Description	Part Number
EXTreme LPHPower Right-Angle Plugs	<u>45985</u>

Application Tooling

Global

Description	Part Number
EXTreme LPHPower Receptacle Insertion Tool for 46114 Series	<u>2034620007</u>
LPH Vertical Receptacle Power Terminal Removal Tool	<u>621006300</u>
Vertical Receptacle Press-In Tool	<u>622018671</u>