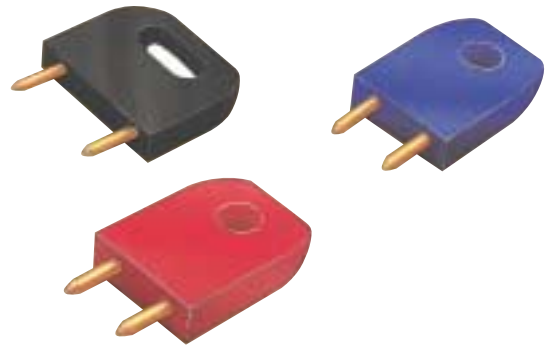


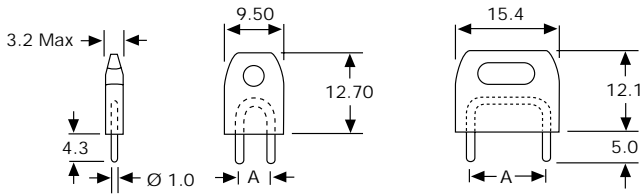
# INSULATED PLUGS AND TRACK PINS



## 1MM INSULATED AND UNINSULATED PLUGS

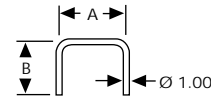
Style 1

Style 2



Precision 1mm diameter brass shorting plugs moulded into polyacetal thermoplastic insulators. Choice of colour. Can be used with any 1mm socket. Uninsulated plugs may be soldered directly into PC board for permanent linking.

Plating finish: Gold (-05), Tin (-01)  
Current rating: 10A at 20°C

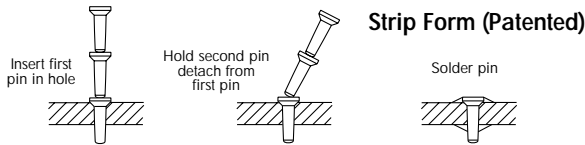


Colour	Order Code (Gold)			
Red	D3086-99	D3087-99	D3088-99	D3089-99
Black	D3086-98	D3087-98	D3088-98	D3089-98
Blue	D3086-97	D3087-97	D3088-97	D3089-97
Style	1	1	2	2
Dim A	5.08	6.35	10.16	12.70

Order Code	D3080-01 D3080-05	D3081-01 D3081-05	D3082-01 D3082-05
A	5.08	6.35	10.16
B	9.00	9.00	9.00

## TRACK PINS

Track pins provide an economical connection between tracks on opposite sides of pcbs without through hole plating. Available in continuous strip form for fast assembly with no special tooling required. Strip form pins are supplied in multiples of 2500 with approximately 50 pins per length. Pin material - brass, plated 90/10 tin/lead on nickel.



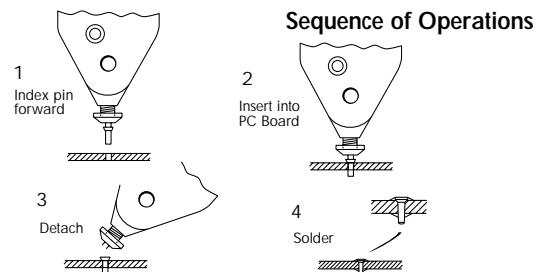
Order Code	PCB Hole Ø +0/-0.03	PCB Board Thickness	Overall Pin Length
T1558-01	0.83	0.8	2.72
T1559-01	0.83	1.6	3.48
T1563-01	1.00	1.6	3.48
T1564-01	1.00	2.4	4.27
T1565-01	1.00	3.2	5.08

## TRACK PIN INSERTER

- Accepts all diameters of track pin in strip form.
- Accepts all lengths of track pin by simple screw adjustment to the nose of the tool.
- Easy to use thumb or finger operated indexing, with "click-action" feel.
- Light and small in size.

Order Code

Z1002-00



# Customer Information Sheet

DRAWING No.: D3088-XX

SHEET 2 OF 2

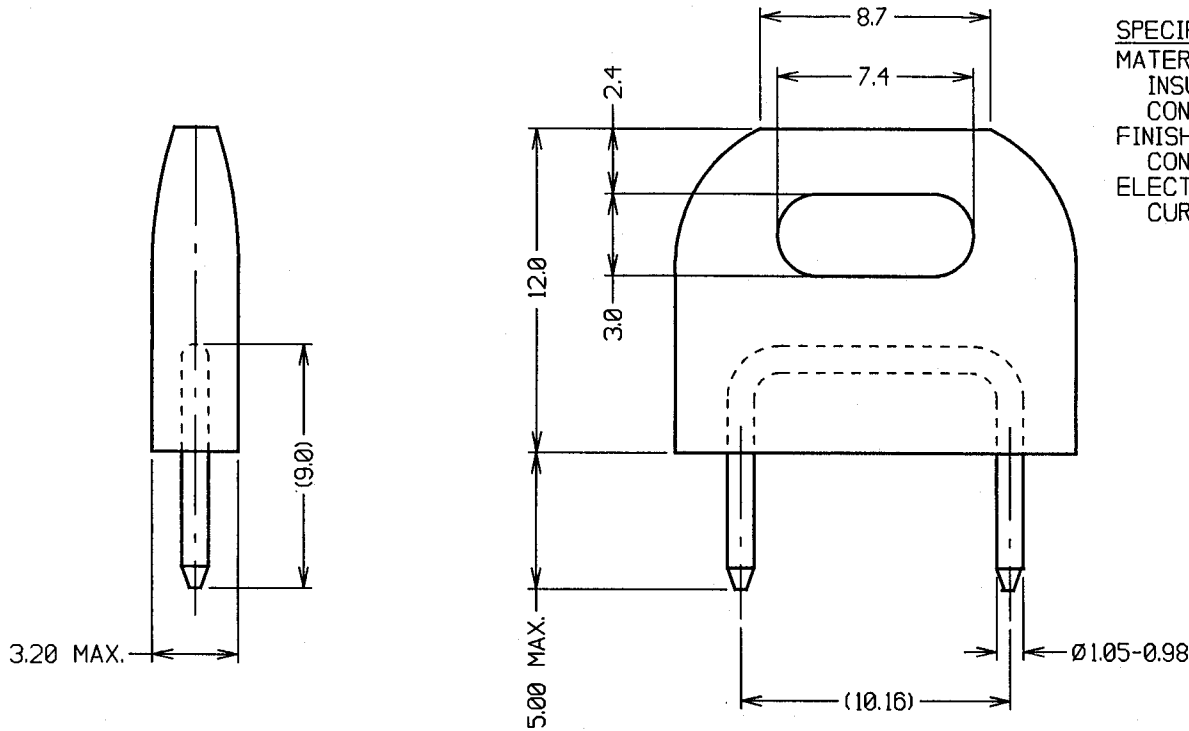
IF IN DOUBT - ASK

(C)

NOT TO SCALE

THIRD ANGLE PROJECTION

ALL DIMENSIONS IN mm



SPECIFICATION.

MATERIAL:

INSULATOR = ACETAL COPOLYMER UL94-HB

CONTACT = BRASS

FINISH:

CONTACT = 0.1µ GOLD OVER 1µ NICKEL

ELECTRICAL:

CURRENT RATING = 10A AT 20°C

ORDER CODE:

**D3088-XX**

INSULATOR COLOUR

- 97 - BLUE
- 98 - BLACK
- 99 - RED

8	15.01.98	4240
7	02.10.96	3559
6	28.01.91	1765
5	26.01.88	1222
4	23.04.87	1104
3	16.06.82	----
2	23.06.81	----
1	13.05.81	----
ISS.	DATE	C/N
APPROVED: <i>[Signature]</i>		
CHECKED: <i>[Signature]</i>		
DRAWN: D C BECK		
CUSTOMER REF.		
ASSEMBLY DRG:		

## HARWIN

HARWIN INC  
U.S.A.

TEL: (812) 285 0055  
FAX: (812) 285 0056

HARWIN PLC  
U.K.

TEL: 01705 370451  
FAX: 01705 314590

HARWIN PTE  
SINGAPORE

TEL: 65 7794909  
FAX: 65 7793868

TOLERANCES

X. - ±1mm  
X.X - ±0.25mm  
X.XX - ±0.10mm  
X.XXX - ±0.01mm  
ANGLES - ±1°  
UNLESS STATED

MATERIAL:

SEE ABOVE

FINISH: SEE ABOVE

S/AREA: mm<sup>2</sup>

TITLE:

1mm INSULATED  
SHORTING LINK

DRAWING NUMBER:

**D3088-XX**

SHT  
2  
OF  
2