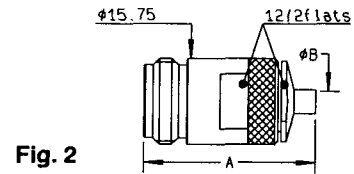
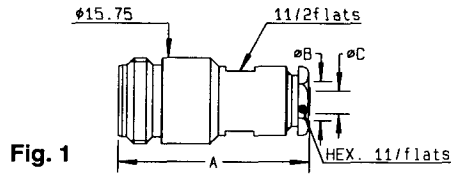
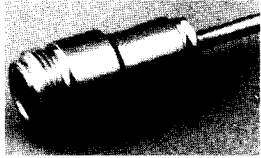


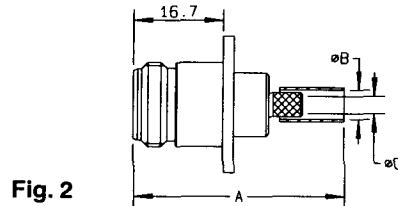
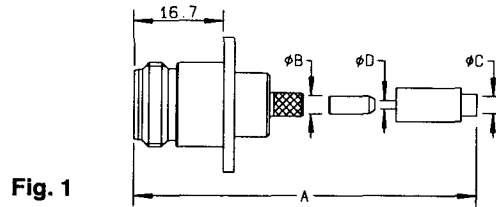
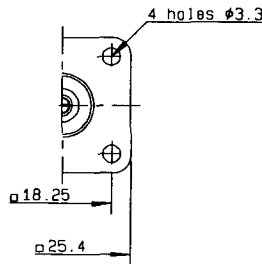
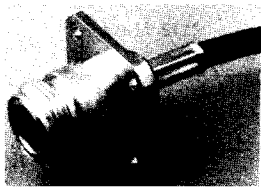
STRAIGHT JACKS, FOR SEMI RIGID CABLES



cable group	part number	fig.	dimensions (mm)			captured center contact	mounting	note
			A	B	C			
.141	R161 227 000	1	35.5	5.6	3.65	NO	M06	Clamp type
.141	R161 227 020●	1	35.5	5.6	3.65	YES	M06	Clamp type
.141	R161 226 020	2	32	3.65		NO	M21	Solder type

● Upon request

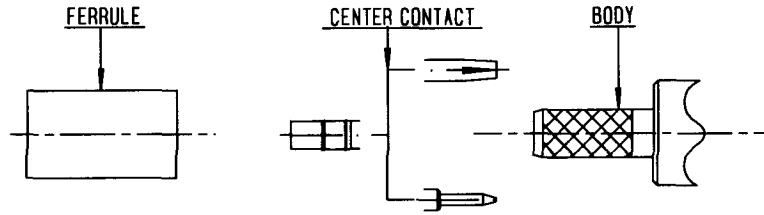
25.4 mm SQUARE FLANGE, STRAIGHT JACKS, FULL CRIMP TYPE, FOR FLEXIBLE CABLES
(25.4 mm = 1 inch)



cable group	part number	fig.	dimensions (mm)				captured center contact	mounting	panel	note
			A	B	C	D				
2 / 50 / S+D	R161 281 000	1	40.3	3.45	3.25	1	YES	M09	P01	
2.6 / 50 / S+D	R161 281 300	1	40.3	3.45	3.25	1.63	YES	M09	P01	
5 / 50 / S	R161 282 000	2	39.3	5.41	3.11		YES	M12	P01	
5 / 50 / D	R161 283 000	2	39.3	5.8	3.11		YES	M12	P01	
10 / 50 / S	R161 286 000	2	40.6	11.05	7.46		YES	M10	P01	
11 / 50 / D	R161 286 200	2	40.6	11.4	7.46		YES	M10	P01	

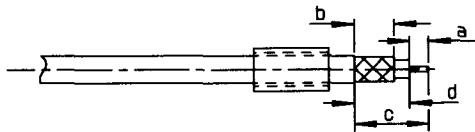
Note : standard packaging = 50 pieces. For unit packaging, add "W" after the P/N.

M 10



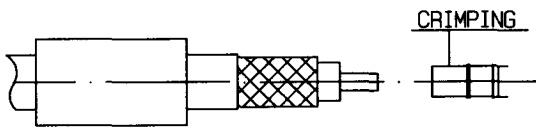
CONNECTORS	Stripping length			
	a	b	c	d
R161 075 000 R161 088 000 R161 241 000 R161 243 000 R161 286 000 R161 286 200 R161 331 000 R161 331 200	.197 (5mm)	.315 (8mm)	.551 (14mm)	.354 (9mm)
R161 075 060 R161 076 000		.354 (9mm)	.591 (15mm)	.394 (10mm)

1



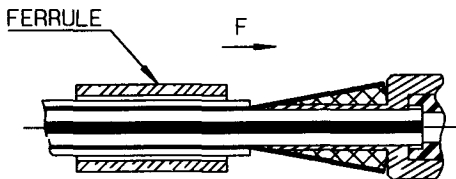
- 1.1 Slide the ferrule onto the cable.
- 1.2 Strip the cable.

2



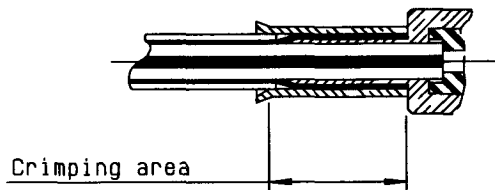
- 2.1 Slide on center contact until it bottoms against cable dielectric.
- 2.2 crimp center contact with crimping tool: R282 231 000 Hex.01 (2.54) or MIL standard crimping tool R282 293 000 (M22520/5-01) + MIL standard dies R282 235 116 (Y116 DANIELS).

3



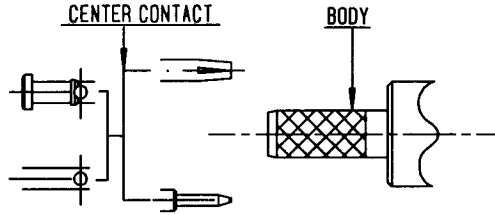
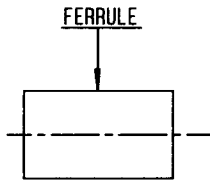
- 3.1 Fan the braid.
- 3.2 Slide cable dielectric into the body while gently guiding the braid over the knurl.
- 3.3 Push until the dielectric clicks into position.
- 3.4 Slide ferrule over the braid. (In direction F).

4



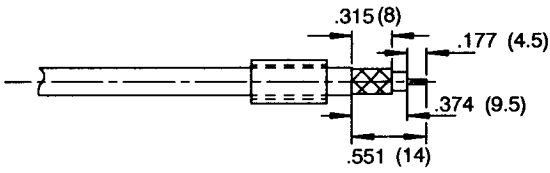
- 4.1 Crimp the ferrule with crimping tool R282 231 000 Hex.415 (10.54) or MIL standard crimping tool R282 293 000 (M22520/5-01) + MIL standard dies R282 235 116 (Y116 DANIELS).
- 4.2 Cut the excess of braid.

M 12



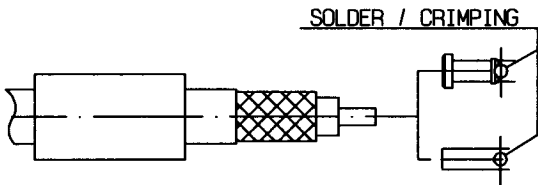
CONNECTORS	R161 082 000	R161 282 000
	R161 082 200	R161 283 000
	R161 083 000	R161 329 000
	R161 237 000	R161 329 130
	R161 238 000	R161 329 200

1



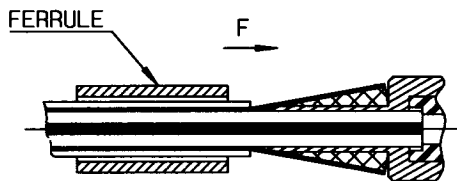
- 1.1 Slide onto the cable the ferrule.
- 1.2 Strip the cable.

2



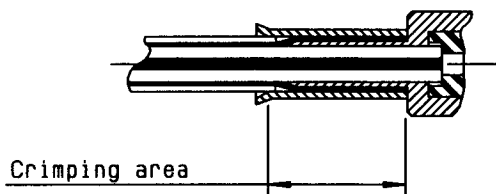
- 2.1 Slide on center contact until it bottoms against cable dielectric.
- 2.2 Solder or crimp center contact with crimping tool R282 223 000 Hex .068(1.73) or MIL standard crimping tool R282 293 000 (M22520/5-01) + MIL standard dies R282 235 011 (M22520/5-11).

3

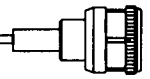


- 3.1 Fan the braid.
- 3.2 Slide cable into the body until bottoms against insulator.
- 3.3 Slide ferrule over the braid. (In direction F).

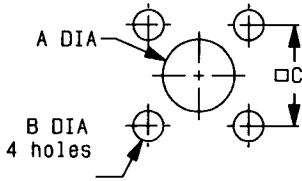
4



- 4.1 Crimp the ferrule with crimping tool R282 223 000 Hex .213 (5.41) or MIL standard crimping tool R282 293 000 (M22520/5-01) + MIL standard dies R282 235 011 (M22520/5-11)
- 4.2 Cut the excess of braid.

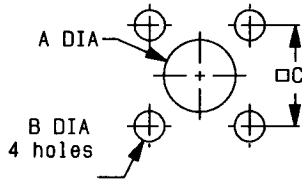


P01



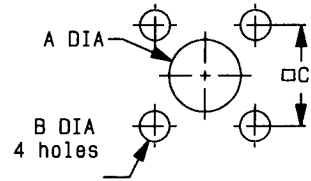
	MM		INCH	
	maxi	mini	maxi	mini
A	16.3	16.1	0.642	0.634
B	3.30	3.20	0.13	0.126
C	18.35	18.15	0.722	0.715

P02



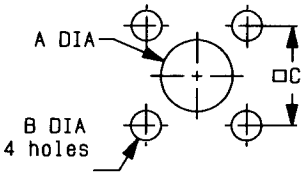
	MM		INCH	
	maxi	mini	maxi	mini
A	15.1	14.9	0.594	0.587
B	3.30	3.20	0.13	0.126
C	18.35	18.15	0.722	0.715

P03



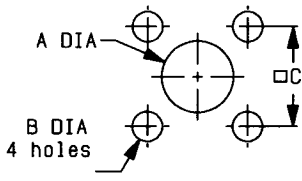
	MM		INCH	
	maxi	mini	maxi	mini
A	9.40	9.20	0.37	0.362
B	3.30	3.20	0.13	0.126
C	12.8	12.6	0.504	0.496

P04



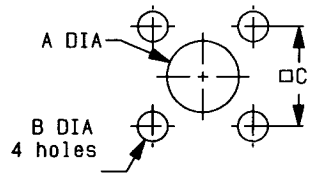
	MM		INCH	
	maxi	mini	maxi	mini
A Front	21.7	21.5	0.854	0.846
A Rear	19.7	19.5	0.776	0.768
B	3.30	3.20	0.13	0.126
C	18.35	18.15	0.722	0.715

P05



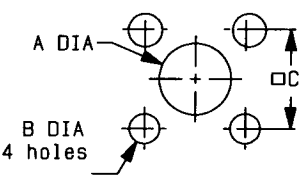
	MM		INCH	
	maxi	mini	maxi	mini
A Front	16.3	16.1	0.642	0.634
A Rear	18	17.8	0.709	0.701
B	3.30	3.20	0.13	0.126
C	18.35	18.15	0.722	0.715

P06



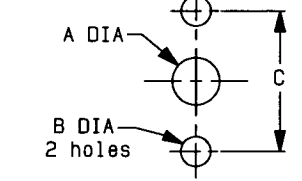
	MM		INCH	
	maxi	mini	maxi	mini
A Front	16.3	16.1	0.642	0.634
A Rear	19.7	19.5	0.776	0.768
B	3.30	3.20	0.13	0.126
C	18.35	18.15	0.722	0.715

P07



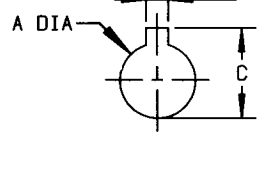
	MM		INCH	
	maxi	mini	maxi	mini
A Front	16.3	16.1	0.642	0.634
A Rear	15.1	14.9	0.594	0.587
B	3.30	3.20	0.13	0.126
C	18.35	18.15	0.722	0.715

P08



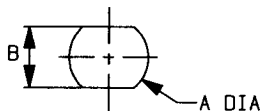
	MM		INCH	
	maxi	mini	maxi	mini
A	5	4.80	0.197	0.189
B	3.30	3.20	0.13	0.126
C	18.1	17.9	0.713	0.705

P09



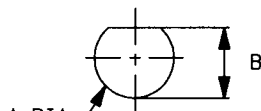
	MM		INCH	
	maxi	mini	maxi	mini
A	14.3	14.1	0.563	0.555
B	2.30	2.20	0.091	0.087
C	17	16.8	0.669	0.661

P10



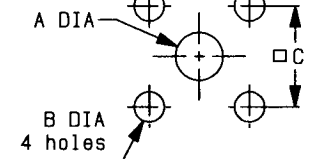
	MM		INCH	
	maxi	mini	maxi	mini
A	16.1	16	0.634	0.63
B	13.7	13.6	0.539	0.535

P11

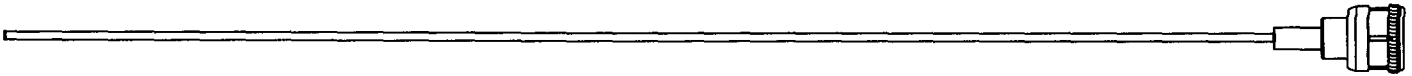


	MM		INCH	
	maxi	mini	maxi	mini
A	14.3	14.1	0.563	0.555
B	13.8	13.6	0.543	0.535

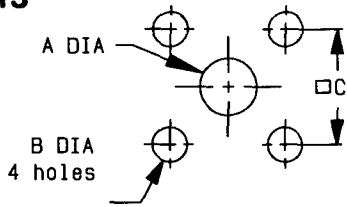
P12



	MM		INCH	
	maxi	mini	maxi	mini
A	1.45	1.35	0.057	0.053
B	3.23	3.13	0.127	0.123
C	10.21	10.11	0.402	0.398

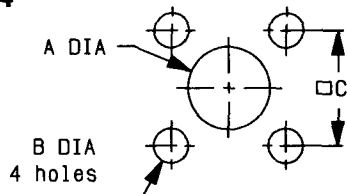


P13



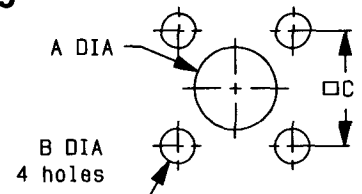
	MM		INCH	
	maxi	mini	maxi	mini
A	4.2	4.1	0.165	0.161
B	2.7	2.6	0.106	0.102
C	8.69	8.59	0.342	0.338

P14



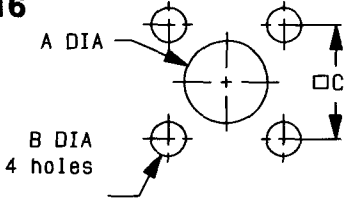
	MM		INCH	
	maxi	mini	maxi	mini
A Front	16.3	16.1	0.642	0.634
A Rear	12.5	12.3	0.492	0.484
B	3.3	3.2	0.13	0.126
C	18.35	18.15	0.722	0.715

P15



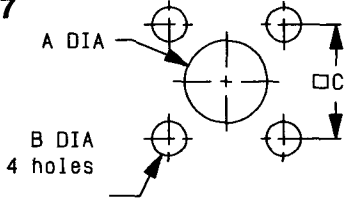
	MM		INCH	
	maxi	mini	maxi	mini
A Front	16.3	16.1	0.642	0.634
A Rear	4.2	4.1	0.165	0.161
B	3.3	3.2	0.13	0.126
C	18.35	18.15	0.722	0.715

P16



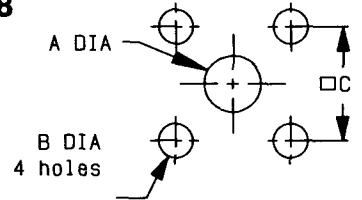
	MM		INCH	
	maxi	mini	maxi	mini
A	29.5	29.3	1.161	1.153
B	3.7	3.6	0.146	0.142
C	24.8	24.7	0.976	0.972

P17



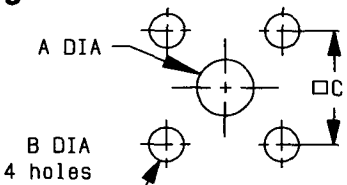
	MM		INCH	
	maxi	mini	maxi	mini
A	12.5	12.3	0.492	0.484
B	3.3	3.2	0.13	0.126
C	18.35	18.15	0.722	0.715

P18



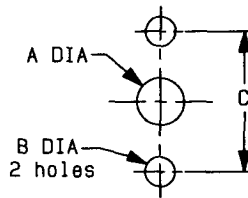
	MM		INCH	
	maxi	mini	maxi	mini
A	4.2	4.1	0.165	0.161
B	3.3	3.2	0.13	0.126
C	18.35	18.15	0.722	0.715

P19



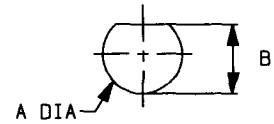
	MM		INCH	
	maxi	mini	maxi	mini
A	7.1	7	0.279	0.275
B	3.4	3.3	0.134	0.13
C	18.35	18.15	0.722	0.715

P20



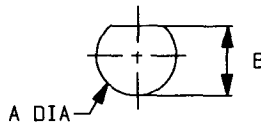
	MM		INCH	
	maxi	mini	maxi	mini
A	4.2	4.1	0.165	0.161
B	2.7	2.6	0.106	0.102
C	12.25	12.15	0.482	0.478

P21



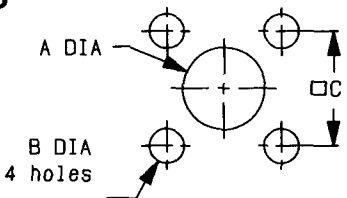
	MM		INCH	
	maxi	mini	maxi	mini
A	13	12.8	0.511	0.504
B	12.1	11.9	0.476	0.468

P22



	MM		INCH	
	maxi	mini	maxi	mini
A	16.1	15.9	0.633	0.626
B	15.1	14.9	0.594	0.586

P23



	MM		INCH	
	maxi	mini	maxi	mini
A Front	32.4	32.2	1.276	1.267
A Rear	16.4	16.2	0.646	0.638
B	6.6	6.5	0.26	0.256
C	36.6	36.4	1.441	1.433