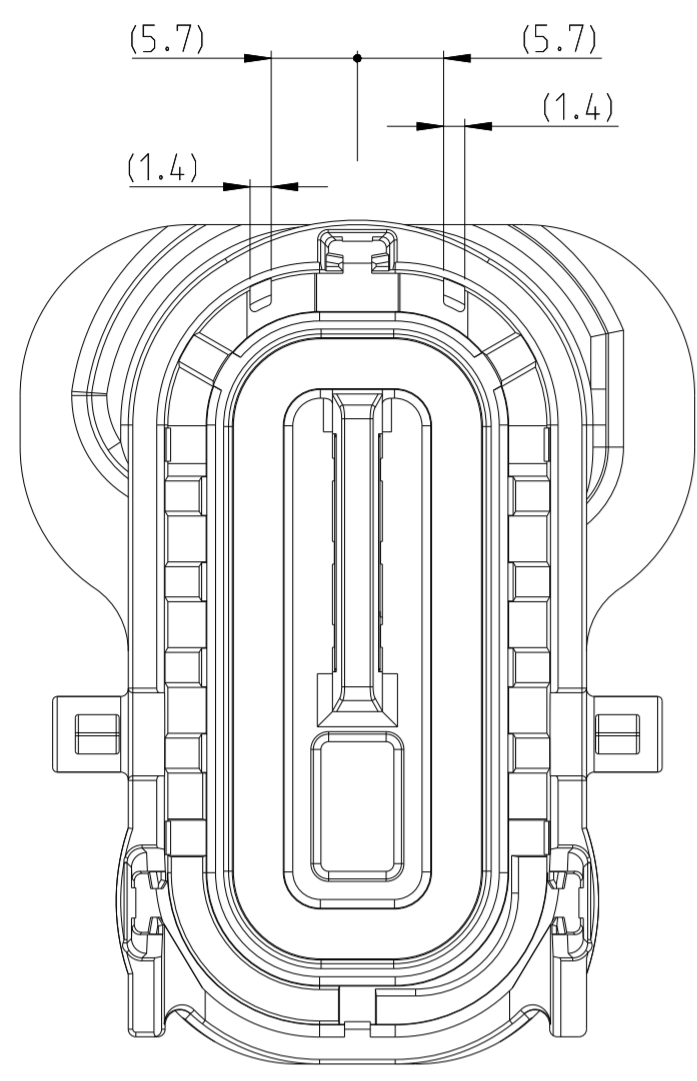
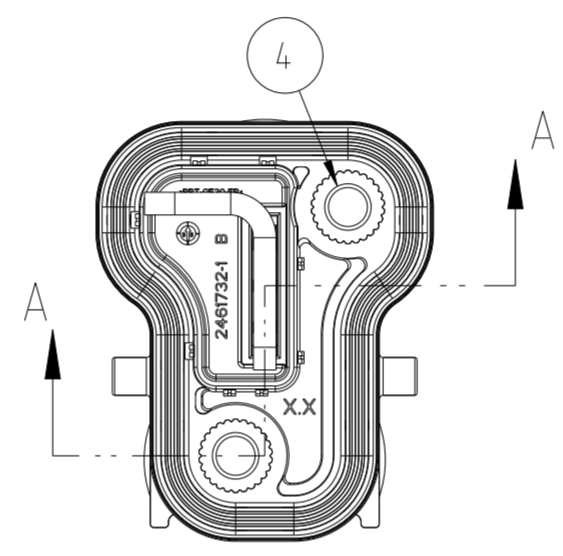
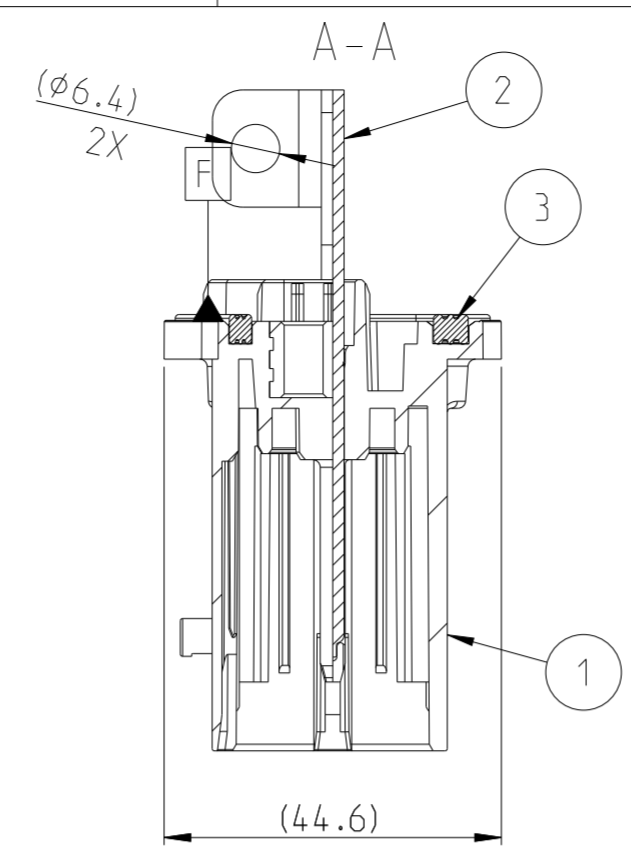
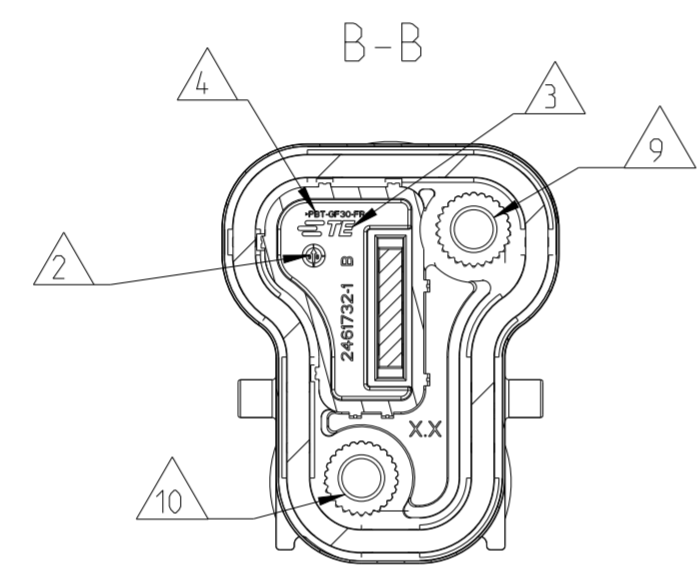
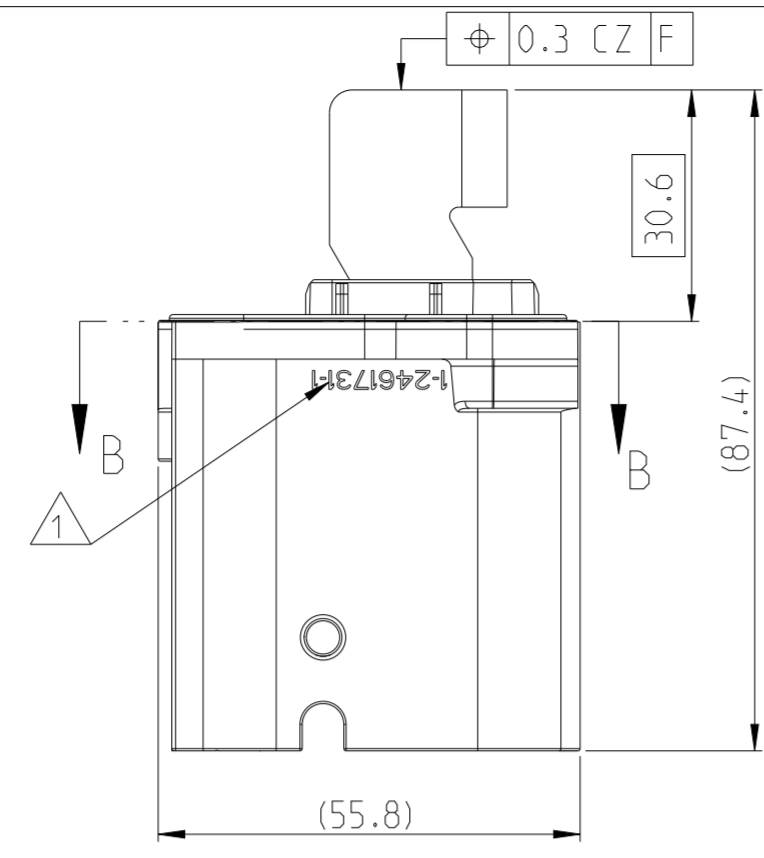


SCALE 2:1



AS SHOWN 2461731-1
CODING A
Kodierung A



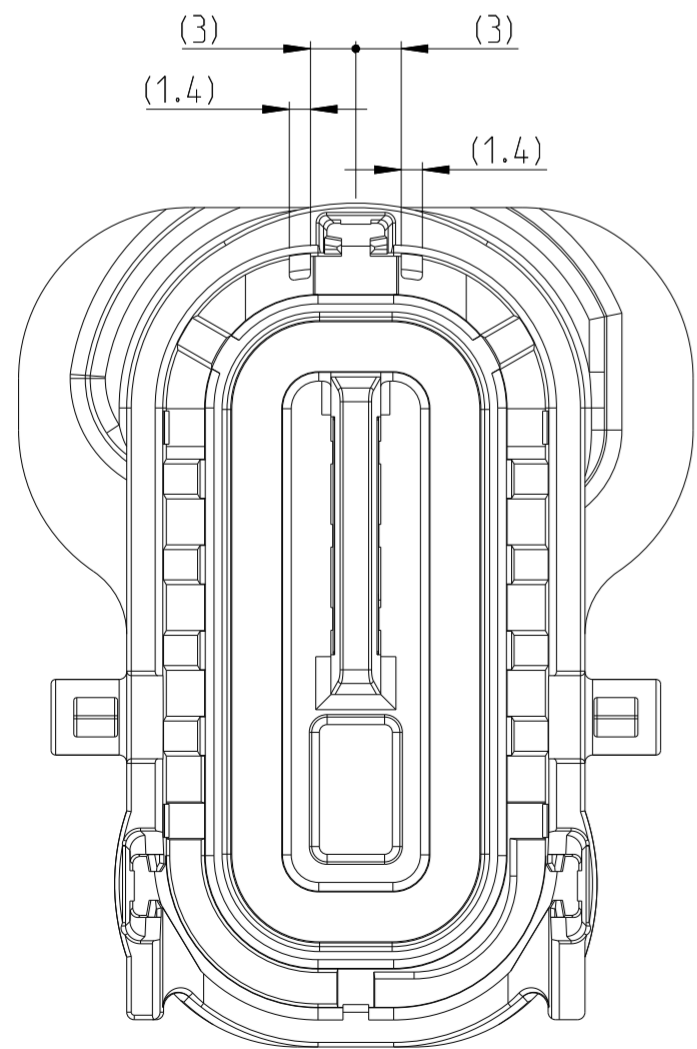
AS SHOWN 1-2461731-1

REVISIONS					
P	LTR	DESCRIPTION	DATE	DWN	APVD
A		NEW DRAWING	14DEC2023	US	PW
B		E-24-206962: PRODUCT IMPROVEMENT	30APR2024	MF	PW
B1		E-25-XXXXXX: Changed name of Variants	27JUN2025	US	PW
C		ECN-25-360009: Single Prt. Rev	17DEC2025	US	PW

FNOTES
Bemerkungen

- 1 TE-CONNECTIVITY ORDER-NUMBER
TE-Connectivity Bestellnummer
- 2 PRODUCTION DATE
Produktionsdatum
- 3 TE-LOGO
TE-Logo
- 4 MATERIAL MARKING
Materialkennzeichnung
- 5 DIFFERENT CODINGS
Unterschiedliche Kodierungen
- 6 SUITABLE TO COUNTERPART PN 2461715 AND 2461722
Passend zu Gegenstueck PN 2461715 und 2461722
- 7 MALFUNCTION CAUSED BY LACQUER IS NOT COVERED BY TE WARRANTY.
Funktionsbeeinträchtigung durch Lackieren liegt nicht im Einfluss und Gewährleistungsumfang von TE
- 8 PACKED IN TRAY OR SPECIAL FORM ACCORDING TO TE PACKAGING SPECIFICATION
Verpackt im Tray oder Spezialform nach TE Verpackungsspezifikation
- 9 MAX. TORQUE 10 ± 1.0 Nm FOR M6x1 SCREW
Maximales Drehmoment 10 ± 1.0 Nm für M6x1 Schraube
- 10 REQUIREMENTS FOR SEALING AREA ON CUSTOMER HOUSING: $\square 0.1$ Rz 6.3µm
Anforderungen für Dichtungsbereich am Kundengehäuse:
- 11 SCREW IN DEPTH "T": 7.5mm<T<8.5mm
EINSCHRAUBTIEFE "T": 7.5mm<T<8.5mm
- 12 MOUNTING THICKNESS INFLUENCES CREEPAGES AND CLEARANCES
Dicke der Befestigung beeinflusst Luft- und Kriechstrecken

SCALE 2:1



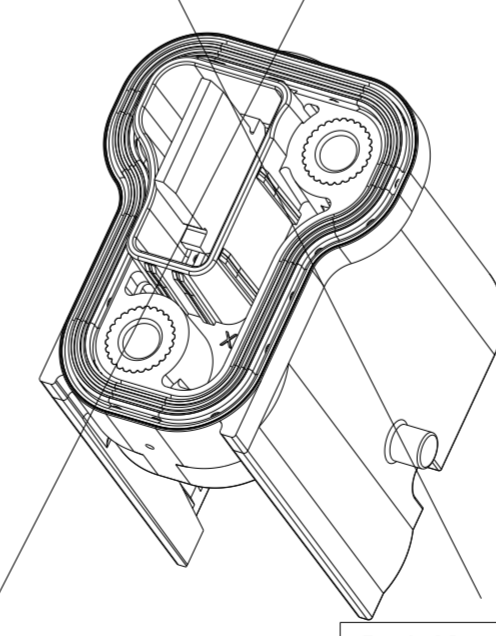
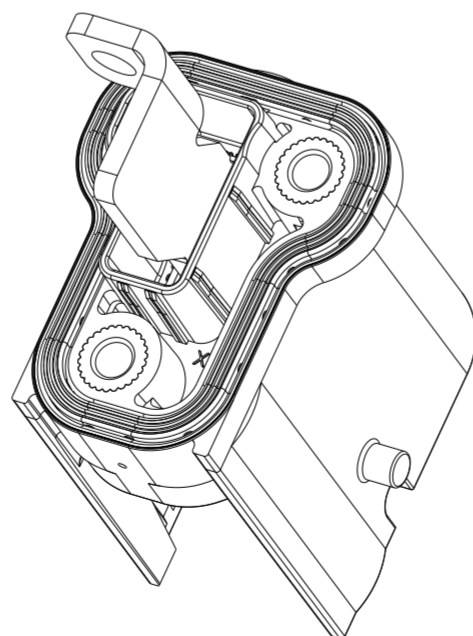
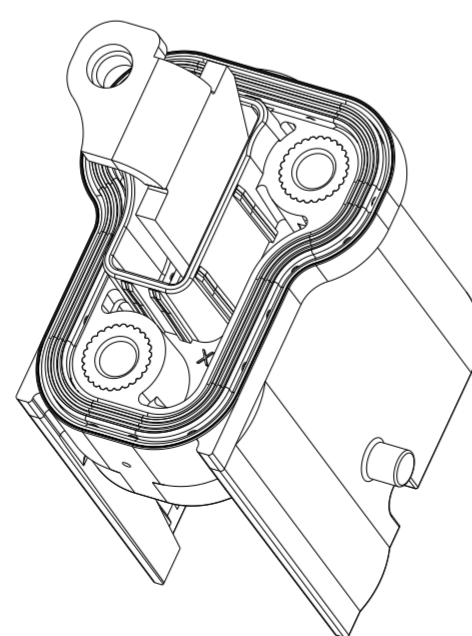
AS SHOWN 2461731-1
CODING B
Kodierung B

DELIVERY CONDITION: $\triangle 7$
Lieferzustand

PCON21 CONTACT 180°
pcon21 Kontakt 180°
AS SHOWN 2461731-1

PCON21 CONTACT 90°
pcon21 Kontakt 90°
AS SHOWN 1-2461731-1

PCON21 CONTACT FLAT
pcon21 Kontakt gerade
AS SHOWN 2-2461731-1



PCON21 CONTACTS 180°, 90° & FLAT IN CODINGS A & B
PCON21 Kontakt 180°, 90° & flat in Kodierung A & B

DIMENSION AND TOLERANCES ACCORDING TO:
Bemaßungen und Toleranzen gemäß:
DIN ISO 20457
DIN EN ISO 8015 (AD) - DIN EN ISO 291
DIN EN ISO 14405-1/-2/-3

2	2	2	2	2	2	INTERT. M6. OVERMOLDED Einsatz. M6. umspritzt	METAL	ZINC PLATED Zink	4		
1	1	1	1	1	1	Sealing for tab header Dichtung fuer Messerleiste	SILICON	RED rot	3		
1	1	-	-	-	-	PCON 21 CONTACT FLAT PCON 21 kontakt gerade	Cu	SILVER silber	2		
-	-	1	1	-	-	PCON 21 CONTACT BENTED 90° PCON 21 kontakt gebogen 90°	Cu	SILVER silber	2		
-	-	-	-	1	1	PCON 21 CONTACT BENTED 180° PCON 21 kontakt gebogen 180°	Cu	SILVER silber	2		
1	-	1	-	1	-	1POS 180 DEG HEADER COD B 1pol 180 Grad Stifteleiste Kod B	PBT-GF30 FR	EMERALD GREEN smaragdgruen	1		
-	1	-	1	-	1	1POS 180 DEG HEADER COD A 1pol 180 Grad Stifteleiste Kod A	PBT-GF30 FR	BLACK schwarz	1		
							DESCRIPTION	MATERIAL	COLOUR	ITEM NO.	
2-2	2-1	1-2	1-1	-2	-1	TE ORDER-NO.					
B	B	C	C	C	C	REVISION OF EACH ASSY NO (WHEN BLANK, USE DWG REVISION)					
-	-	101	101	98.3	98.3	WEIGHT OF EACH ASSY NO [g]					
							PARTS LIST				
							QTY REQD PER ASSY TCPN				

THIS DRAWING IS A CONTROLLED DOCUMENT.

DWN	U. Siegel	14DEC2023
CHK	P. Wrobel	14DEC2023
APVD	F. Eltron	15DEC2023
PRODUCT SPEC	108-94935	
APPLICATION SPEC	114-97587	
WEIGHT	SEE TABLE A2	
CUSTOMER DRAWING		

STE TE Connectivity

NAME: 1POS. HEADER HSG. ASSY
1Pol. Stifteleistengeh. Assy

SIZE: A2 CAGE CODE: 00779 DRAWING NO: C-2461731 RESTRICTED TO: -

SCALE: 2:1 SHEET: 1 OF 2 REV: C

