



1900

Small Light

MityLite™



Unlike conventional flashlights that have a yellowish beam, the MityLite 1900 flashlight uses a hi-intensity Xenon lamp that produces a powerful, bright beam. Use this compact flashlight to cut through thick smoke, fog, and dust. It is submersible and comes with a twist-on shroud. The 1900 is ideal for any situation. Powered by 2 AAA alkaline cells. Unlike conventional flashlights that have a yellowish beam, the MityLite 1900 flashlight uses a hi-intensity Xenon lamp that produces a powerful, bright beam. Use this compact flashlight to cut through thick smoke, fog, and dust. It is submersible and comes with a twist-on shroud. The 1900 is ideal for any situation. Powered by 2 AAA alkaline cells.

Built Peli tough

- Built Pelican toughSubmersible
- SubmersibleSuper bright Xenon beam
- Super bright Xenon beamPeli's legendary lifetime guarantee**
- Peli's legendary lifetime guarantee****Where applicable by law
- **Where applicable by law

CONFIGURATIONS

1900 - Standard

1900T - With With Clear Gift Tube

DIMENSIONS

Length: 4.09"

MATERIALS

Body: Xenoy

O-Ring: Ethylene Propylene

Lens: Polycarbonate (PC)

Shroud: Xenoy

Contact Spring Retainer: Phosphore Bronze

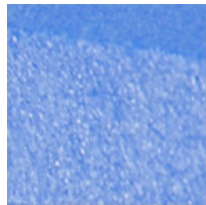
COLOURS



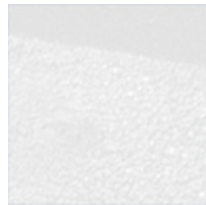
Yellow



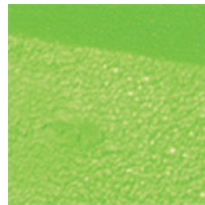
Black



Blue



White








Neon Green



Orange

LIGHT SPECS

Lamp Type: Incandescent (Xenon)

FL1 STANDARD	HIGH
	11 LUMENS
	1h 30mins
	45m
	571cd
	IPX7

POWER

Battery Size: AAA

Battery Type: Alkaline

Battery Quantity: 2

Batteries Included: yes

Volts: 3.0v

WEIGHT

Weight With Batteries: 1.60 oz

Weight Without Batteries: 0.75 oz

Packaged Weight: 2.40 oz

SWITCH

Switch Type: Twisting Lens Shroud

Light Modes: On / Off

CERTIFICATIONS

Class I, Division 2

Class II, Division 2

IECEX ib

Class I, Division 1

OTHER

Submersible: yes

Minimum Pack: 12

Military: yes

Package Code: C

Peli Products, S.L.U.

c/ Provença, 388, Planta 7 • Barcelona, Spain 08025 • Phone: +34 934 674 999

info@peli.com • www.peli.com