

BC 107,6 DKL S KMGY - Housing cover



2200046

<https://www.phoenixcontact.com/in/products/2200046>

Please be informed that the data shown in this PDF document is generated from our online catalog. Please find the complete data in the user documentation. Our general terms of use for downloads are valid.



DIN rail housing for use in distribution boards in accordance with DIN 43880, Hinged cover, can be sealed, width: 107.6 mm, height: 45 mm, depth: 8 mm, color: light gray (similar RAL 7035)

Your advantages

- Coordinated housing and connection system for faster device development
- Individual online configuration for diverse applications in building automation
- Variety of connection technology
- Can be mounted on the DIN rail or the wall
- With DIN-rail-mountable bus connector and power connector system as an option
- Tool-free mounting
- Available in overall widths from 1 ... 9 width units (17.8 mm ... 161.6 mm)
- Compliant with DIN EN 43880

Commercial data

Item number	2200046
Packing unit	10 pc
Minimum order quantity	100 pc
Note	Made to order (non-returnable)
Sales key	ACH
Product key	ACHBAB
GTIN	4046356498562
Weight per piece (including packing)	14.14 g
Weight per piece (excluding packing)	11.5 g
Customs tariff number	84879090
Country of origin	DE

BC 107,6 DKL S KMGY - Housing cover



2200046

<https://www.phoenixcontact.com/in/products/2200046>

Technical data

Product properties

Product type	Cover
Housing type	DIN rail housing for use in distribution boards in accordance with DIN 43880
Housing series	BC
Product family	BC 107,6..
Type	Hinged cover, can be sealed
Ventilation openings present	no

Dimensions

Width	107.6 mm
Height	45 mm
Depth	8 mm

Material specifications

Color (Housing)	light gray (RAL 7035)
Flammability rating according to UL 94	V0
Housing material	PC
Surface characteristics	untreated

Environmental and real-life conditions

Vibration test

Specification	IEC 60068-2-6:2007-12
Frequency	10 - 150 - 10 Hz
Sweep speed	1 octave/min
Amplitude	0.15 mm (10 Hz ... 58.1 Hz)
Acceleration	2g (58.1 Hz ... 150 Hz)
Test duration per axis	2.5 h
Test directions	X-, Y- and Z-axis

Glow-wire test

Specification	IEC 60695-2-11:2014-02
Temperature	850 °C
Time of exposure	30 s

Mechanical strength / tumbling barrel

Specification	IEC 60068-2-31:2008-05
Height of fall	50 cm
Frequency	50

Shocks

Specification	IEC 60068-2-27:2008-02
Pulse shape	Half-sine

BC 107,6 DKL S KMGY - Housing cover



2200046

<https://www.phoenixcontact.com/in/products/2200046>

Acceleration	15g
Shock duration	11 ms
Number of shocks per direction	3
Test directions	X-, Y- and Z-axis (pos. and neg.)

Degree of protection (IP code)

Specification	IEC 60529:1989-11 + AMD 1:1999-11 + AMD 2:2013-08
---------------	---

Ambient conditions

Max. IP code to attain	IP20
Ambient temperature (operation)	-40 °C ... 105 °C (depending on power dissipation)
Ambient temperature (storage/transport)	-40 °C ... 70 °C
Ambient temperature (assembly)	-5 °C ... 100 °C
Relative humidity (storage/transport)	95 %

Mounting

Mounting type	can be swiveled and sealed
---------------	----------------------------

Packaging specifications

Type of packaging	Box packaging
-------------------	---------------


BC 107,6 DKL S KMGY - Housing cover



2200046

<https://www.phoenixcontact.com/in/products/2200046>

Approvals

 To download certificates, visit the product detail page: <https://www.phoenixcontact.com/in/products/2200046>



UL Recognized

Approval ID: E240868

BC 107,6 DKL S KMGY - Housing cover



2200046

<https://www.phoenixcontact.com/in/products/2200046>

Classifications

ECLASS

ECLASS-11.0	27182702
ECLASS-13.0	27190603

ETIM

ETIM 9.0	EC002779
----------	----------

UNSPSC

UNSPSC 21.0	31261500
-------------	----------

BC 107,6 DKL S KMGY - Housing cover



2200046

<https://www.phoenixcontact.com/in/products/2200046>

Environmental product compliance

EU RoHS	
Fulfills EU RoHS substance requirements	Yes, No exemptions
China RoHS	
Environment friendly use period (EFUP)	EFUP-E
	No hazardous substances above the limits
EU REACH SVHC	
REACH candidate substance (CAS No.)	No substance above 0.1 wt%

BC 107,6 DKL S KMGY - Housing cover

2200046

<https://www.phoenixcontact.com/in/products/2200046>



Mandatory accessories

BC 107,6 OT U11 BK VPE80 - Upper housing part

1006943

<https://www.phoenixcontact.com/in/products/1006943>

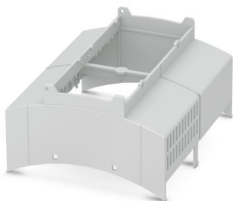


DIN rail housing for use in distribution boards in accordance with DIN 43880, Upper housing part (U11) with vents, Installation depth connection technology: 11.1 mm, width: 107.6 mm, height: 89.7 mm, depth: 54.85 mm, color: black (similar RAL 9005)

BC 107,6 OT 000C0C KMGY VPE80 - Upper housing part

1025418

<https://www.phoenixcontact.com/in/products/1025418>



DIN rail housing for use in distribution boards in accordance with DIN 43880, modular upper housing part, width: 107.6 mm, height: 89.7 mm, depth: 54.85 mm, color: light gray (similar RAL 7035)

BC 107,6 DKL S KMGY - Housing cover

2200046

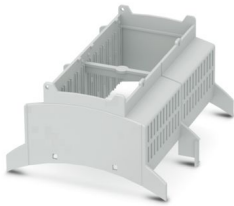
<https://www.phoenixcontact.com/in/products/2200046>



BC 107,6 OT 2121 KMGY - Upper housing part

1038850

<https://www.phoenixcontact.com/in/products/1038850>



DIN rail housing for use in distribution boards in accordance with DIN 43880, modular upper housing part, width: 107.6 mm, height: 89.7 mm, depth: 54.85 mm, color: light gray (similar RAL 7035)

BC 107,6 OT 0C0C0C0C KMGY - Upper housing part

1046365

<https://www.phoenixcontact.com/in/products/1046365>



DIN rail housing for use in distribution boards in accordance with DIN 43880, modular upper housing part, width: 107.6 mm, height: 89.7 mm, depth: 54.85 mm, color: light gray (similar RAL 7035)

BC 107,6 DKL S KMGY - Housing cover

2200046

<https://www.phoenixcontact.com/in/products/2200046>



BC 107,6 OT 2000 KMGY - Upper housing part

1050443

<https://www.phoenixcontact.com/in/products/1050443>

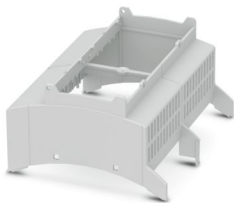


DIN rail housing for use in distribution boards in accordance with DIN 43880, modular upper housing part, width: 107.6 mm, height: 89.7 mm, depth: 54.85 mm, color: light gray (similar RAL 7035)

BC 107,6 OT 0101 KMGY MOQ80 - Upper housing part

1065104

<https://www.phoenixcontact.com/in/products/1065104>



DIN rail housing for use in distribution boards in accordance with DIN 43880, modular upper housing part, width: 107.6 mm, height: 89.7 mm, depth: 54.85 mm, color: light gray (similar RAL 7035)

BC 107,6 DKL S KMGY - Housing cover

2200046

<https://www.phoenixcontact.com/in/products/2200046>



BC 107,6 OT 0C0C0C0C BK - Upper housing part

1066143

<https://www.phoenixcontact.com/in/products/1066143>

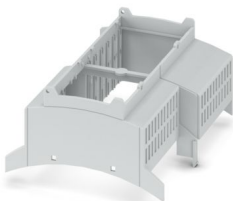


DIN rail housing for use in distribution boards in accordance with DIN 43880, modular upper housing part, width: 107.6 mm, height: 89.7 mm, depth: 54.85 mm, color: black (similar RAL 9005)

BC 107,6 OT 1102 KMGY VPE80 - Upper housing part

1080948

<https://www.phoenixcontact.com/in/products/1080948>



DIN rail housing for use in distribution boards in accordance with DIN 43880, modular upper housing part, width: 107.6 mm, height: 89.7 mm, depth: 54.85 mm, color: light gray (similar RAL 7035)

BC 107,6 DKL S KMGY - Housing cover

2200046

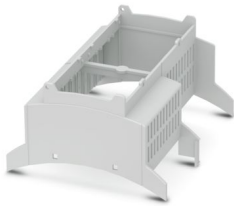
<https://www.phoenixcontact.com/in/products/2200046>



BC 107,6 OT 1112 KMGY - Upper housing part

1086268

<https://www.phoenixcontact.com/in/products/1086268>



DIN rail housing for use in distribution boards in accordance with DIN 43880, modular upper housing part, width: 107.6 mm, height: 89.7 mm, depth: 54.85 mm, color: light gray (similar RAL 7035)

BC 107,6 OT 1121 BK - Upper housing part

1108020

<https://www.phoenixcontact.com/in/products/1108020>



DIN rail housing for use in distribution boards in accordance with DIN 43880, Upper housing part with vents, width: 107.6 mm, height: 89.7 mm, depth: 54.85 mm, color: black (similar RAL 9005)

BC 107,6 DKL S KMGY - Housing cover

2200046

<https://www.phoenixcontact.com/in/products/2200046>



BC 107,6 OT 1210 BK - Upper housing part

1163398

<https://www.phoenixcontact.com/in/products/1163398>

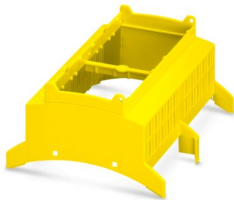


DIN rail housing for use in distribution boards in accordance with DIN 43880, modular upper housing part, width: 107.6 mm, height: 89.7 mm, depth: 54.85 mm, color: black (similar RAL 9005)

BC 107,6 OT U11 YE - Upper housing part

1163766

<https://www.phoenixcontact.com/in/products/1163766>



DIN rail housing for use in distribution boards in accordance with DIN 43880, Upper housing part (U11) with vents, Installation depth connection technology: 11.1 mm, width: 107.6 mm, height: 89.7 mm, depth: 54.85 mm, color: yellow (similar RAL 1018)

BC 107,6 DKL S KMGY - Housing cover

2200046

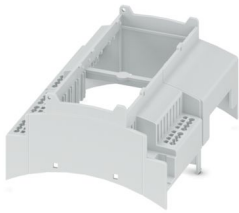
<https://www.phoenixcontact.com/in/products/2200046>



BC 107,6 OT 1D1K1P0R KMGY - Upper housing part

1340863

<https://www.phoenixcontact.com/in/products/1340863>

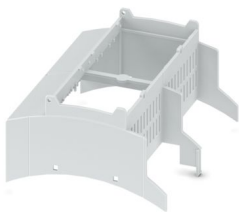


DIN rail housing for use in distribution boards in accordance with DIN 43880, modular upper housing part, SPT-THR, width: 107.6 mm, height: 89.7 mm, depth: 54.85 mm, color: light gray (similar RAL 7035)

BC 107,6 OT 0202 KMGY - Upper housing part

1351310

<https://www.phoenixcontact.com/in/products/1351310>



DIN rail housing for use in distribution boards in accordance with DIN 43880, modular upper housing part, width: 107.6 mm, height: 89.7 mm, depth: 54.85 mm, color: light gray (similar RAL 7035)

BC 107,6 DKL S KMGY - Housing cover

2200046

<https://www.phoenixcontact.com/in/products/2200046>



BC 107,6 OT U11 GY7021 - Upper housing part

1351374

<https://www.phoenixcontact.com/in/products/1351374>



DIN rail housing for use in distribution boards in accordance with DIN 43880, Upper housing part (U11) with vents, Installation depth connection technology: 11.1 mm, width: 107.6 mm, height: 89.7 mm, depth: 54.85 mm

BC 107,6 OT 0C0C0C0C GY7021 - Upper housing part

1480246

<https://www.phoenixcontact.com/in/products/1480246>



DIN rail housing for use in distribution boards in accordance with DIN 43880, modular upper housing part, width: 107.6 mm, height: 89.7 mm, depth: 54.85 mm, color: black gray (similar RAL 7021)

BC 107,6 DKL S KMGY - Housing cover

2200046

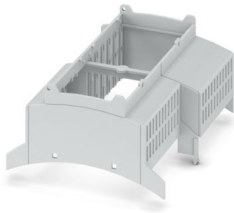
<https://www.phoenixcontact.com/in/products/2200046>



BC 107,6 OT 1120 KMGY - Upper housing part

1554865

<https://www.phoenixcontact.com/in/products/1554865>

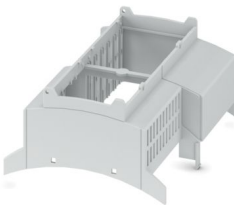


DIN rail housing for use in distribution boards in accordance with DIN 43880, modular upper housing part, width: 107.6 mm, height: 89.7 mm, depth: 54.85 mm, color: light gray (similar RAL 7035)

BC 107,6 OT 1120C KMGY - Upper housing part

1646761

<https://www.phoenixcontact.com/in/products/1646761>



DIN rail housing for use in distribution boards in accordance with DIN 43880, modular upper housing part, width: 107.6 mm, height: 89.7 mm, depth: 54.85 mm, color: light gray (similar RAL 7035)

BC 107,6 DKL S KMGY - Housing cover

2200046

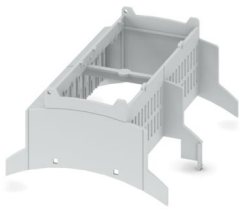
<https://www.phoenixcontact.com/in/products/2200046>



BC 107,6 OT 1212 KMGY - Upper housing part

1679649

<https://www.phoenixcontact.com/in/products/1679649>



DIN rail housing for use in distribution boards in accordance with DIN 43880, modular upper housing part, width: 107.6 mm, height: 89.7 mm, depth: 54.85 mm, color: light gray (similar RAL 7035)

BC 107,6 OT 2122 BK - Upper housing part

1684636

<https://www.phoenixcontact.com/in/products/1684636>



DIN rail housing for use in distribution boards in accordance with DIN 43880, modular upper housing part, width: 107.6 mm, height: 89.7 mm, depth: 54.85 mm, color: black (similar RAL 9005)

BC 107,6 DKL S KMGY - Housing cover

2200046

<https://www.phoenixcontact.com/in/products/2200046>



BC 107,6 OT U11 BK - Upper housing part

2200721

<https://www.phoenixcontact.com/in/products/2200721>



DIN rail housing for use in distribution boards in accordance with DIN 43880, Upper housing part (U11) with vents, Installation depth connection technology: 11.1 mm, width: 107.6 mm, height: 89.7 mm, depth: 54.85 mm, color: black (similar RAL 9005)

BC 107,6 OT 0121 KMGY - Upper housing part

2202301

<https://www.phoenixcontact.com/in/products/2202301>



DIN rail housing for use in distribution boards in accordance with DIN 43880, modular upper housing part, width: 107.6 mm, height: 89.7 mm, depth: 54.85 mm, color: light gray (similar RAL 7035)

BC 107,6 DKL S KMGY - Housing cover

2200046

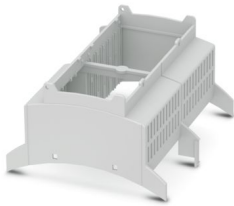
<https://www.phoenixcontact.com/in/products/2200046>



BC 107,6 OT 1121 KMGY - Upper housing part

2203260

<https://www.phoenixcontact.com/in/products/2203260>



DIN rail housing for use in distribution boards in accordance with DIN 43880, modular upper housing part, width: 107.6 mm, height: 89.7 mm, depth: 54.85 mm, color: light gray (similar RAL 7035)

BC 107,6 OT U22 BK - Upper housing part

2203763

<https://www.phoenixcontact.com/in/products/2203763>



DIN rail housing for use in distribution boards in accordance with DIN 43880, Upper housing part (U22) with vents, Installation depth connection technology: 22.35 mm, width: 107.6 mm, height: 89.7 mm, depth: 54.85 mm, color: black (similar RAL 9005)

BC 107,6 DKL S KMGY - Housing cover

2200046

<https://www.phoenixcontact.com/in/products/2200046>



BC 107,6 OT U11 RD3000 - Upper housing part

2203809

<https://www.phoenixcontact.com/in/products/2203809>

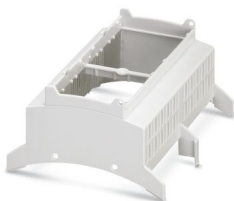


DIN rail housing for use in distribution boards in accordance with DIN 43880, Upper housing part (U11) with vents, Installation depth connection technology: 11.1 mm, width: 107.6 mm, height: 89.7 mm, depth: 54.85 mm, color: flame red (similar RAL 3000)

BC 107,6 OT U11 KMGY - Upper housing part

2896076

<https://www.phoenixcontact.com/in/products/2896076>



DIN rail housing for use in distribution boards in accordance with DIN 43880, Upper housing part (U11) with vents, Installation depth connection technology: 11.1 mm, width: 107.6 mm, height: 89.7 mm, depth: 54.85 mm, color: light gray (similar RAL 7035)

BC 107,6 DKL S KMGY - Housing cover

2200046

<https://www.phoenixcontact.com/in/products/2200046>



BC 107,6 OT U22 KMGY - Upper housing part

2896089

<https://www.phoenixcontact.com/in/products/2896089>

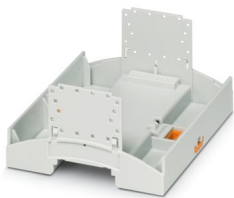


DIN rail housing for use in distribution boards in accordance with DIN 43880, Upper housing part (U22) with vents, Installation depth connection technology: 22.35 mm, width: 107.6 mm, height: 89.7 mm, depth: 54.85 mm, color: light gray (similar RAL 7035)

BC 107,6 UT HBUS KMGY - Mounting base housing

2202951

<https://www.phoenixcontact.com/in/products/2202951>



DIN rail housing for use in distribution boards in accordance with DIN 43880, Lower housing part with base latch, width: 107.6 mm, height: 89.7 mm, depth: 48.9 mm, color: light gray (similar RAL 7035), cross connection: DIN rail connector (optional), number of positions cross connector: 16

BC 107,6 DKL S KMGY - Housing cover

2200046

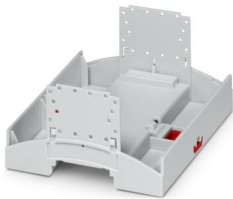
<https://www.phoenixcontact.com/in/products/2200046>



BC 107,6 UT HBUS KMGY/RD - Mounting base housing

2203517

<https://www.phoenixcontact.com/in/products/2203517>



DIN rail housing for use in distribution boards in accordance with DIN 43880, Lower housing part with base latch, width: 107.6 mm, height: 89.7 mm, depth: 48.9 mm, color: light gray (similar RAL 7035), cross connection: DIN rail connector (optional), number of positions cross connector: 16

BC 107,6 UT HBUS FS BK VPE80 - Mounting base housing

1006953

<https://www.phoenixcontact.com/in/products/1006953>



DIN rail housing for use in distribution boards in accordance with DIN 43880, Lower housing part with base latch, width: 107.6 mm, height: 89.7 mm, depth: 48.9 mm, color: black (similar RAL 9005), cross connection: DIN rail connector (optional), number of positions cross connector: 16

BC 107,6 DKL S KMGY - Housing cover

2200046

<https://www.phoenixcontact.com/in/products/2200046>



BC 107,6 UT HBUS GY7021 - Mounting base housing

1385674

<https://www.phoenixcontact.com/in/products/1385674>

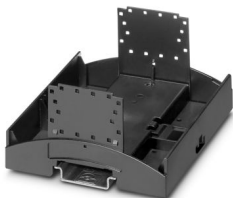


DIN rail housing for use in distribution boards in accordance with DIN 43880, Lower housing part with base latch, width: 107.6 mm, height: 89.7 mm, depth: 48.9 mm, color: black gray (similar RAL 7021), cross connection: DIN rail connector (optional), number of positions cross connector: 16

BC 107,6 UT HBUS GY W/ORG CLP - Mounting base housing

1749649

<https://www.phoenixcontact.com/in/products/1749649>



DIN rail housing for use in distribution boards in accordance with DIN 43880, Lower housing part without base latch, width: 107.6 mm, height: 89.7 mm, depth: 48.9 mm, color: gray (similar RAL 7042), cross connection: DIN rail connector (optional), number of positions cross connector: 16

BC 107,6 DKL S KMGY - Housing cover

2200046

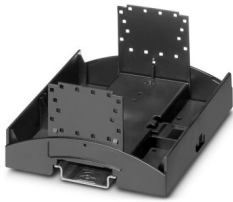
<https://www.phoenixcontact.com/in/products/2200046>



BC 107,6 UT HBUS BK W/ORG CLP - Mounting base housing

2203815

<https://www.phoenixcontact.com/in/products/2203815>



DIN rail housing for use in distribution boards in accordance with DIN 43880, Lower housing part without base latch, width: 107.6 mm, height: 89.7 mm, depth: 48.9 mm, color: black (similar RAL 9005), cross connection: DIN rail connector (optional), number of positions cross connector: 16

HBUS8 107,6-8P-1S BK - DIN rail bus connectors

1252173

<https://www.phoenixcontact.com/in/products/1252173>



DIN rail connector, color: black, nominal current: 3 A (per contact), rated voltage (III/2): 100 V, number of positions: 8, product range: BC 107,6.., pitch: 2.54 mm, mounting: DIN rail mounting, locking: without

BC 107,6 DKL S KMGY - Housing cover

2200046

<https://www.phoenixcontact.com/in/products/2200046>



HBUS 107,6-16P-1S BK - DIN rail bus connectors

2896306

<https://www.phoenixcontact.com/in/products/2896306>



DIN rail connector, color: black, nominal current: 3 A (Total current of 25 A max.), rated voltage (III/2): 30 V, number of positions: 16, product range: BC 107,6..., pitch: 2.54 mm, mounting: DIN rail mounting, locking: without

HBUS8-B SET BK - Protective cap

1252176

<https://www.phoenixcontact.com/in/products/1252176>



Set of 3 caps, for protecting unused DIN rail bus connectors, simply snap on to fit

BC 107,6 DKL S KMGY - Housing cover

2200046

<https://www.phoenixcontact.com/in/products/2200046>



HBUS-B SET BK - Protective cap

2278173

<https://www.phoenixcontact.com/in/products/2278173>

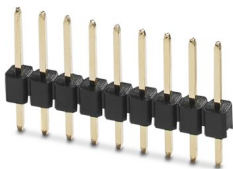


Set of 3 caps, for protecting unused DIN rail bus connectors, simply snap on to fit

PSTD 0,65X0,65/9-1-2,54 - Pin strip

1252180

<https://www.phoenixcontact.com/in/products/1252180>



Pin strip, color: black, nominal current: 3 A (per contact), rated voltage (III/2): 100 V, contact connection type: Pin, number of potentials: 9, number of rows: 1, number of positions: 9, number of connections: 9, product range: PSTD 0,65X0,65/...-1-V, pitch: 2.54 mm, mounting: THR soldering, pin layout: Linear pinning, solder pin [P]: 6.3 mm, locking: without, type of packaging: packed in cardboard

BC 107,6 DKL S KMGY - Housing cover

2200046

<https://www.phoenixcontact.com/in/products/2200046>



PSTD 0,65X0,65/9-2,54 - Pin strip

2200700

<https://www.phoenixcontact.com/in/products/2200700>



Pin strip, color: black, contact connection type: Pin, number of potentials: 18, number of rows: 2, number of positions: 18, number of connections: 18, product range: PSTD 0,65X0,65/...-V, pitch: 2.54 mm, mounting: THR soldering, pin layout: Linear pinning, solder pin [P]: 2.5 mm, locking: without, type of packaging: packed in cardboard

PSTD 0,65X0,65/9-3IS-2,54 - Pin strip

1252178

<https://www.phoenixcontact.com/in/products/1252178>



Pin strip, color: black, nominal current: 3 A (per contact), rated voltage (III/2): 100 V, contact connection type: Pin, number of potentials: 9, number of rows: 1, number of positions: 9, number of connections: 9, pitch: 2.54 mm, mounting: THR soldering, pin layout: Linear pinning, solder pin [P]: 2.5 mm, locking: without, type of packaging: packed in cardboard

BC 107,6 DKL S KMGY - Housing cover

2200046

<https://www.phoenixcontact.com/in/products/2200046>



PSTD 0,65X0,65/18-3IS-2,54 - Pin strip

2202993

<https://www.phoenixcontact.com/in/products/2202993>

Pin strip for connecting an additional PCB or PCB with hole pattern to the HBUS



FUSSRIEGEL 14,4 L30 SPERR OG - Base latch

2896998

<https://www.phoenixcontact.com/in/products/2896998>

DIN rail housing for use in distribution boards in accordance with DIN 43880, Base latch, width: 14.4 mm, height: 29.8 mm, depth: 5.9 mm, color: orange (similar RAL 2003)



BC 107,6 DKL S KMGY - Housing cover



2200046

<https://www.phoenixcontact.com/in/products/2200046>

KP BC K4 C2 P5 - Membrane keypad

1337341

<https://www.phoenixcontact.com/in/products/1337341>

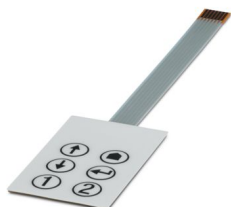


Membrane keypad for BC 107,6 and BC 161,6, self-adhesive, conductive silver technology, 4 keys, 2 colors, 7-pos. terminal lug, pitch: 1.0 mm, customizable in the online configurator

KP BC K6 C2 P7 - Membrane keypad

1337344

<https://www.phoenixcontact.com/in/products/1337344>



Membrane keypad for BC 107,6 and BC 161,6, self-adhesive, conductive silver technology, 6 keys, 2 colors, 7-pos. terminal lug, pitch: 1.0 mm, customizable in the online configurator

Accessories

BC 107,6 DKL S KMGY - Housing cover



2200046

<https://www.phoenixcontact.com/in/products/2200046>

HS LC-V-D3/ R2XC1-5,08 - Fiber optic

2202311

<https://www.phoenixcontact.com/in/products/2202311>



Multiple light guides, passive, rigid, Cylinder head, emission surface: planar, number of displays: 2, (2 rows, 1 column), pitch: 5.08 mm, ESD protection: <12 kV, can be used for the BC housing range (housing must be processed)

HS LC-V-D3/ R3XC1-5,08 - Fiber optic

2202312

<https://www.phoenixcontact.com/in/products/2202312>



Multiple light guides, passive, rigid, Cylinder head, emission surface: planar, number of displays: 3, (3 rows, 1 column), pitch: 5.08 mm, ESD protection: <12 kV, can be used for the BC housing range (housing must be processed)

Phoenix Contact 2025 © - all rights reserved

<https://www.phoenixcontact.com>

PHOENIX CONTACT (I) Pvt. Ltd.

A-58/2, Okhla Industrial Area, Phase - II, New Delhi-110 020

+91.1275.71420

info@phoenixcontact.co.in