



GMSM Low Profile Single Row Metal Shell Microminiature Solder Cup and Pre-Wired Connectors

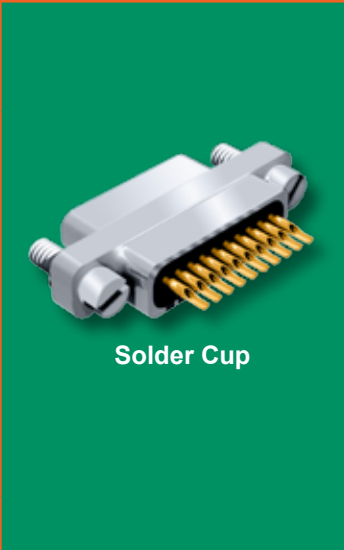


GMSM Connectors offer mil spec design and performance in a smaller form factor. These GMSM single row connectors are reduced in height compared to two-row Micro-D connectors.

GMSM Connectors feature gold plated TwistPin contacts, machined aluminum shells, and are fully potted with epoxy. Choose from 4 to 35 contacts. Available in a variety of finishes, socket connectors are fitted with Fluorosilicone interfacial seals.

D

HOW TO ORDER GMSM SOLDER CUP CONNECTORS						
Series	Shell Finish	Number of Contacts	Contact Type	Termination Type	Hardware	
GMSM	1 – Cadmium	4	P – Pin S – Socket	S Solder Cup	B	
	2 – Nickel	6			P	
	4 – Black Anodize	10			M	
	5 – Gold	15			M1	
	6 – Chem Film	20			S	
		25			S1	
	Stainless Steel Shell	30			L	
	3 – Passivated	35			K	
					F	
					R	
Sample Part Number						
GMSM	1 –	15	P	S	B	



MICRO-D MOUNTING HARDWARE									
B	P	M	M1	S	S1	L	K	F	R
Thru-Hole Order Hardware Separately	Jackpost Removable Includes Nut and Washer	Jackscrew Hex Head Removable E-ring	Jackscrew Hex Head Removable E-ring Extended	Jackscrew Slot Head Removable E-ring	Jackscrew Slot Head Removable E-ring Extended	Jackscrew Hex Head Non-Removable	Jackscrew Slot Head Non-Removable Extended	Float Mount For Front Panel Mounting	Float Mount For Rear Panel Mounting

GMSM Low Profile Single Row Metal Shell Microminiature Solder Cup and Pre-Wired Connectors



Micro-D
Single Row

HOW TO ORDER GMSM CONNECTORS WITH INSULATED WIRE PIGTAILS



Insulated Wire Pigtails

Series	Shell Finish	Number of Contacts	Contact Type	Wire Gage (AWG)	Wire Type	Wire Color	Wire Length Inches	Hardware	
GMSM	1 – Cadmium	4	P – Pin	4 – #24	K – M22759/11 600 Vrms Teflon (TFE) [®]	1 – White	18	B	
	2 – Nickel	6		S – Socket		6 – #26		2 – Yellow	Wire Length In Inches: ".18" Specifies 18 Inches.
	4 – Black Anodize	10	8 – #28		J – M22759/33 600 Vrms Modified Cross-Linked Tefzel (ETFE) [®]	5 – Color-Coded Stripes Per MIL-STD-681	7 – Ten Color Repeating	M	
	5 – Gold	15		E – NEMA HP3-EB 600 Vrms Type E M16878/4 (TFE)				S1	
	6 – Chem Film	20	L						
	25	K							
	Stainless Steel Shell		30	R					
	3 – Passivated	35							
	Sample Part Number								
	GMSM	2 –	10	P –	6	K	1 –	18	B

HOW TO ORDER GMSM CONNECTORS WITH UNINSULATED SOLID LEADS



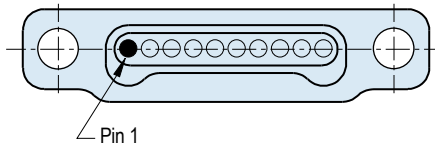
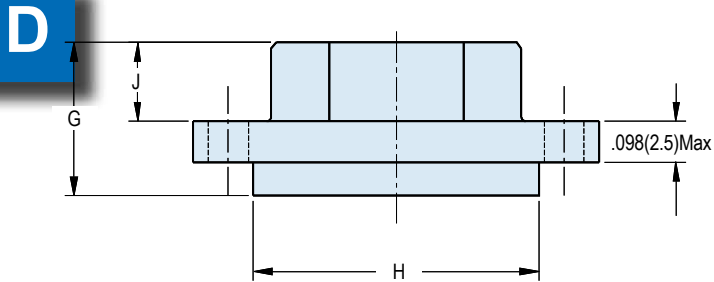
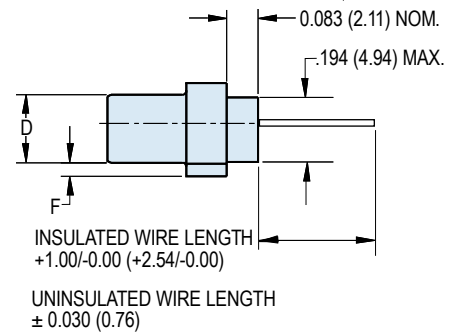
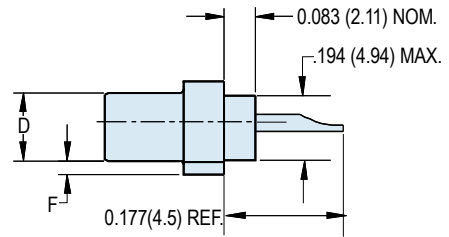
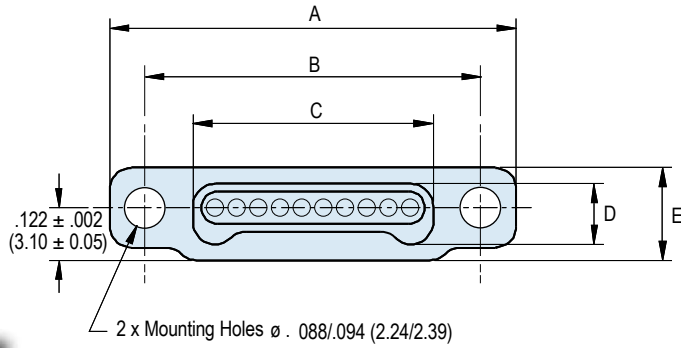
Gold Plated or Solder Dipped Solid Leads

Series	Shell Finish	Number of Contacts	Contact Type	Wire Gage (AWG)	Wire Type	Wire Finish	Wire Length Inches	Hardware	
GMSM	1 – Cadmium	4	P – Pin	4 – #24	C – Copper Wire	3 – Solder Dipped (63/37 Tin/Lead)	.125	B	
	2 – Nickel	6		S – Socket			5 – #25		.250
	4 – Black Anodize	10	6 – #26		4 – Gold Plated	.375	M		
	5 – Gold	15		S1					
	6 – Chem Film	20	L						
	25	K							
	Stainless Steel Shell		30	R					
	3 – Passivated	35							
	Sample Part Number								
	GMSM	2 –	10	P –	5	C	4 –	.250	P

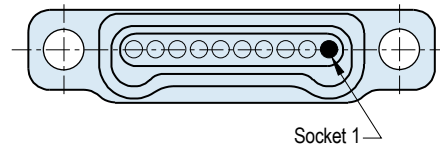
D



GMSM Low Profile Single Row Metal Shell Microminiature Solder Cup and Pre-Wired Connectors



Face View of Pin (Plug) Connector



Face View of Socket (Receptacle) Connector

DIMENSIONS

Layout	A Max.		B		C Max.		D Max.		E Max.		F Max.		G Max.		H Max.		J Max.	
	In.	mm.	In. \pm .003	mm. \pm 0.08	In.	mm.	In.	mm.	In.	mm.	In.	mm.	In.	mm.	In.	mm.	In.	mm.
4P	.648	16.45	.478	12.11	.250	6.37	.135	3.42	.218	5.54	.041	1.03	.358	9.10	.309	7.85	.184	4.67
4S	.648	16.45	.478	12.11	.309	7.85	.194	4.94	.218	5.54	.012	0.30	.370	9.40	.309	7.85	.197	5.00
6P	.748	19.00	.578	14.65	.350	8.91	.135	3.42	.218	5.54	.041	1.03	.358	9.10	.409	10.40	.184	4.67
6S	.748	19.00	.578	14.65	.409	10.40	.194	4.94	.218	5.54	.012	0.30	.370	9.40	.409	10.40	.197	5.00
10P	.948	24.07	.777	19.73	.550	13.99	.135	3.42	.218	5.54	.041	1.03	.358	9.10	.609	15.47	.184	4.67
10S	.948	24.07	.777	19.73	.609	15.47	.194	4.94	.218	5.54	.012	0.30	.370	9.40	.609	15.47	.197	5.00
15P	1.198	30.42	1.027	26.08	.800	20.34	.135	3.42	.218	5.54	.041	1.03	.358	9.10	.859	21.82	.184	4.67
15S	1.198	30.42	1.027	26.08	.859	21.82	.194	4.94	.218	5.54	.012	0.30	.370	9.40	.859	21.82	.197	5.00
20P	1.448	36.77	1.277	32.43	1.050	26.69	.135	3.42	.218	5.54	.041	1.03	.358	9.10	1.109	28.17	.184	4.67
20S	1.448	36.77	1.277	32.43	1.109	28.17	.194	4.94	.218	5.54	.012	0.30	.370	9.40	1.109	28.17	.197	5.00
25P	1.698	43.12	1.527	38.78	1.300	33.04	.135	3.42	.218	5.54	.041	1.03	.358	9.10	1.359	34.52	.184	4.67
25S	1.698	43.12	1.527	38.78	1.359	34.52	.194	4.94	.218	5.54	.012	0.30	.370	9.40	1.359	34.52	.197	5.00
30P	1.948	49.47	1.777	45.13	1.550	39.39	.135	3.42	.218	5.54	.041	1.03	.358	9.10	1.609	40.87	.184	4.67
30S	1.948	49.47	1.777	45.13	1.609	40.87	.194	4.94	.218	5.54	.012	0.30	.370	9.40	1.609	40.87	.197	5.00
35P	2.198	55.82	2.027	51.48	1.800	45.74	.135	3.42	.218	5.54	.041	1.03	.358	9.10	1.859	47.22	.184	4.67
35S	2.198	55.82	2.027	51.48	1.859	47.22	.194	4.94	.218	5.54	.012	0.30	.370	9.40	1.859	47.22	.197	5.00