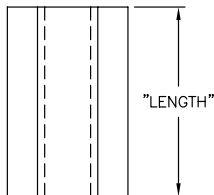
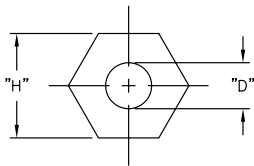
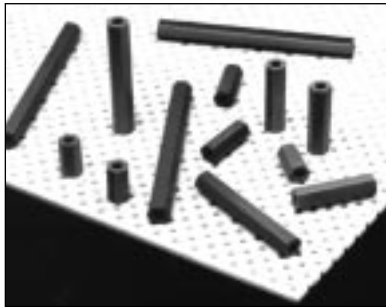


CIRCUIT BOARD HARDWARE

HS Series Hex Spacer Standoff



Material: CPVC, RMS-11
Color: Light Gray

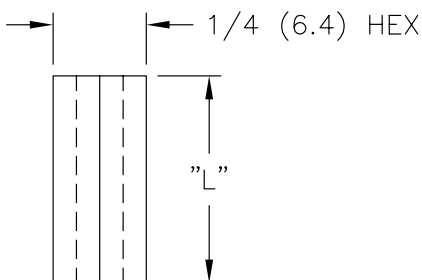
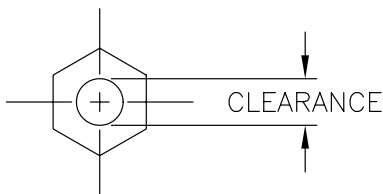
Part No.			Standard Pack: Up to 1" Long, 1000 per bag; over 1" long, 500 per bag
For #4 Screw	For #6 Screw	For #8 Screw	Length ± 0.010 (0.25)
HS4-3	—	—	3/8 (9.5)
HS4-4	HS6-4	—	1/2 (12.7)
HS4-5	HS6-5	HS8-5	5/8 (15.9)
HS4-6	HS6-6	HS8-6	3/4 (19.1)
HS4-7	HS6-7	HS8-7	7/8 (22.2)
HS4-8	HS6-8	HS8-8	1 (25.4)
HS4-10	HS6-10	HS8-10	1 - 1/4 (31.8)
HS4-12	HS6-12	HS8-12	1 - 1/2 (38.1)
HS4-14	HS6-14	HS8-14	1 - 3/4 (44.5)
HS4-16	HS6-16	HS8-16	2 (50.8)
—	—	HS8-18	2 - 1/4 (57.2)
—	—	HS8-20	2 - 1/2 (63.5)
—	—	HS8-22	2 - 3/4 (69.8)
—	—	HS8-24	3 (76.2)

Part No.	"D" ±0.005 (.13)	"H"
HS4	.102 (2.6)	.187 ±.006 (4.8 ±.15)
HS6	.110 (2.8)	.250 ±.008 (6.4 ±.20)
HS8	.141 (3.6)	.375 ±.010 (9.5 ±.25)

Features

- Mounts with self-tapping screw.
- Self-extinguishing, low moisture absorption, chemical resistant, UL-94 V-0 rated material.
- Available in 4' pieces or other lengths by special order.

RHS Series Richco Hexagonal Spacer



Material: Nylon 6/6, RMS-01
Color: Natural

Part No.			Standard Pack: 1000 per bag
Clearance For #4 Screw	Clearance For #6 Screw	Clearance For #8 Screw	"L" Dim.
I.D. = 0.125 ±0.005	I.D. = 0.145 ±0.005	I.D. = 0.175 ±0.010	
RHS4-2	RHS6-2	RHS8-2	1/8 (3.2)
RHS4-3	RHS6-3	RHS8-3	3/16 (4.8)
RHS4-4	RHS6-4	RHS8-4	1/4 (6.4)
RHS4-5	RHS6-5	RHS8-5	5/16 (7.9)
RHS4-6	RHS6-6	RHS8-6	3/8 (9.5)
RHS4-7	RHS6-7	RHS8-7	7/16 (11.1)
RHS4-8	RHS6-8	RHS8-8	1/2 (12.7)
RHS4-9	RHS6-9	RHS8-9	9/16 (14.3)
RHS4-10	RHS6-10	RHS8-10	5/8 (15.9)
RHS4-11	RHS6-11	RHS8-11	11/16 (17.5)
RHS4-12	RHS6-12	RHS8-12	3/4 (19.1)
RHS4-14	RHS6-14	RHS8-14	7/8 (22.2)
RHS4-16	RHS6-16	RHS8-16	1 (25.4)

Features

- Other lengths available in .010 length increments by special order.