

SR2 COM01 Quick start

1500 0347

Aim: SR2COM01 alarm message on your mobile phone.

Objectif : réception sur votre téléphone mobile d'un message d'alarme provenant du SR2 COM01.

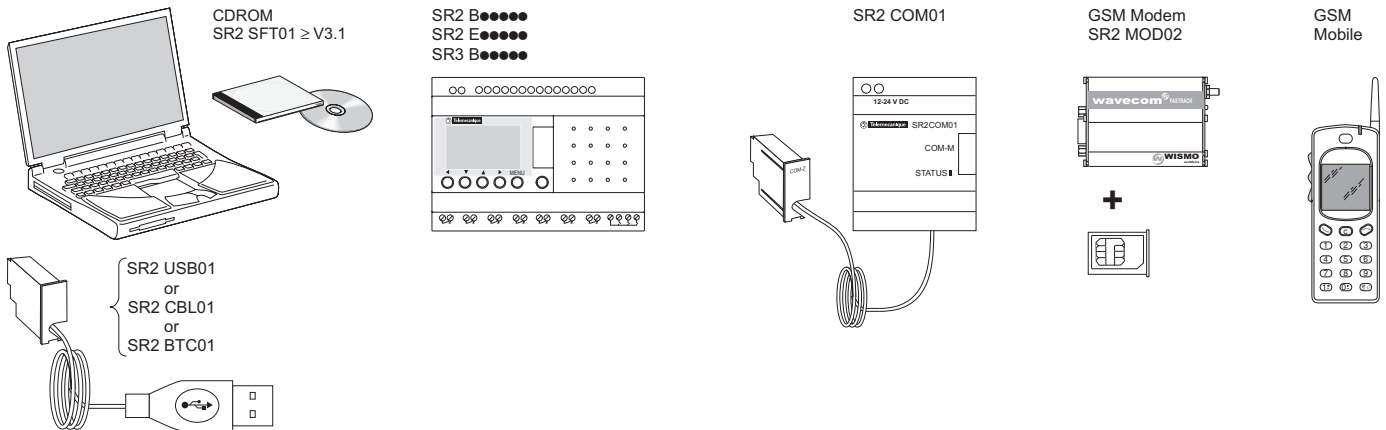
Zweck: Empfang einer Alarmmeldung vom SR2COM01 an Ihrem Mobiltelefon.

Objetivo: Recepción, en el teléfono móvil, de un mensaje de alarma procedente del SR2COM01.

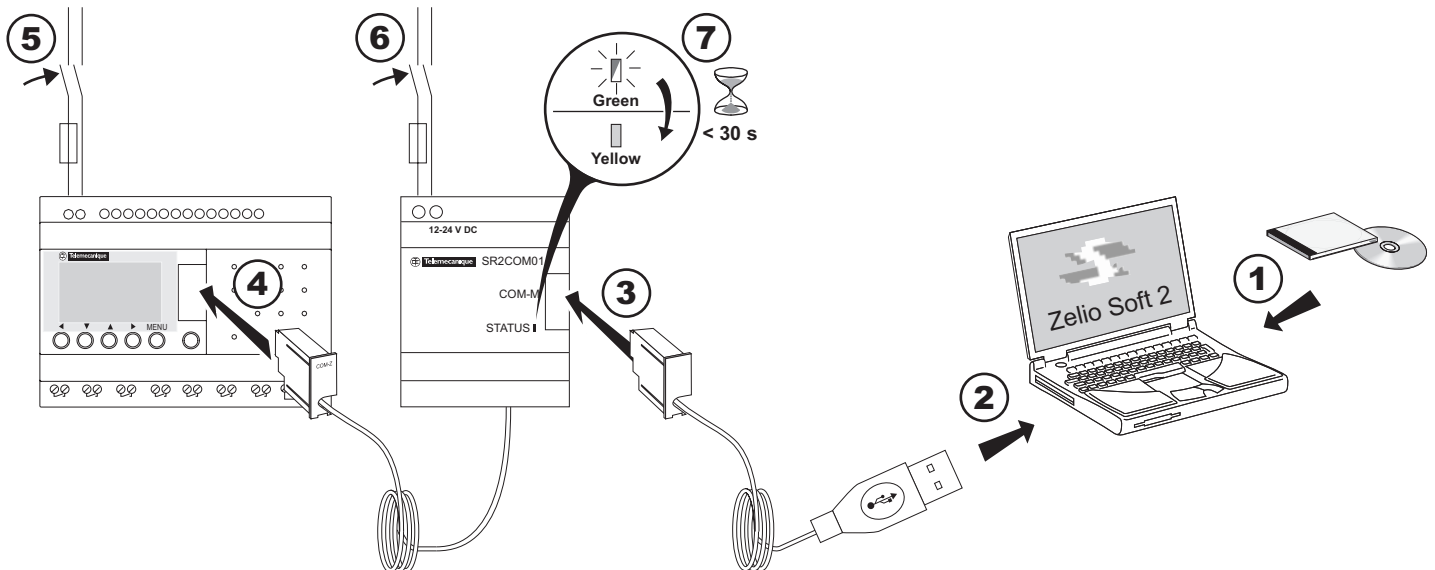
Obiettivo: Ricezione sul cellulare di un messaggio d'allarme proveniente dalla SR2COM01.

Objectivo: recepção no seu telemóvel de uma mensagem de alarme proveniente do SR2COM01.

A Required hardware / Matériel nécessaire / Erforderliche Hardware Material requerido / Hardware richiesto / Hardware necessário

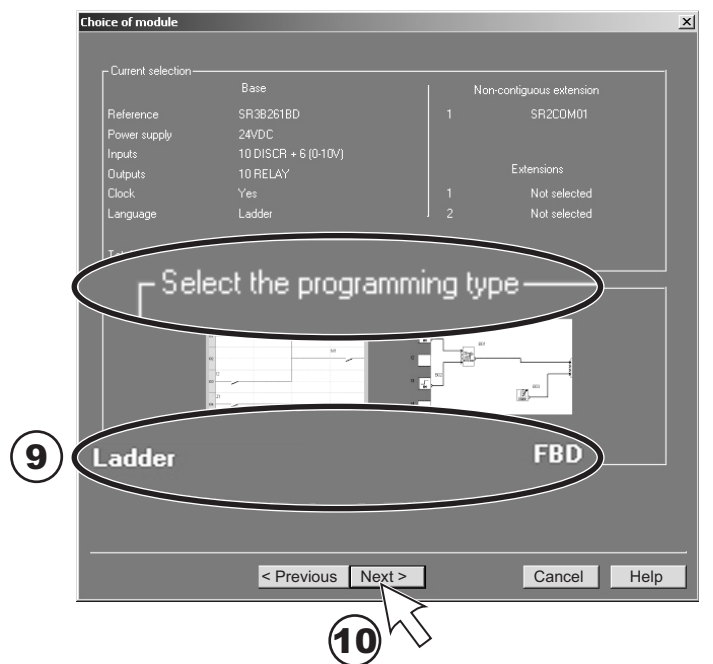
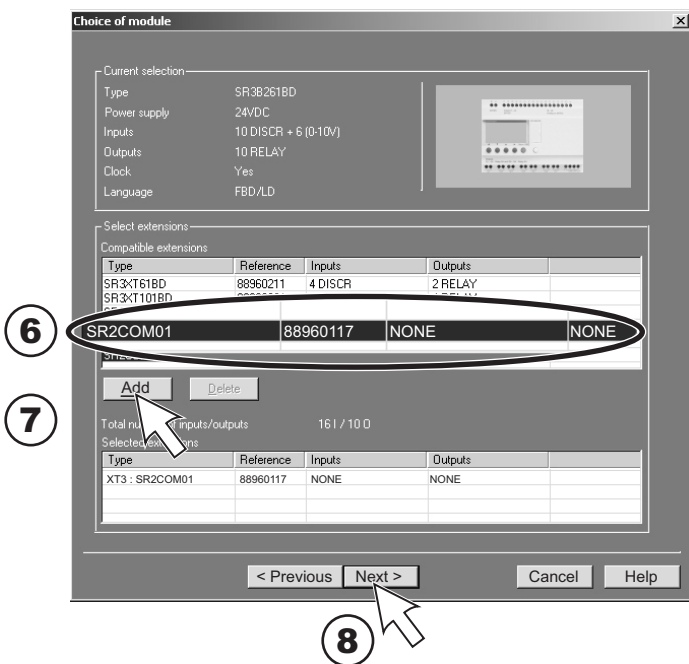
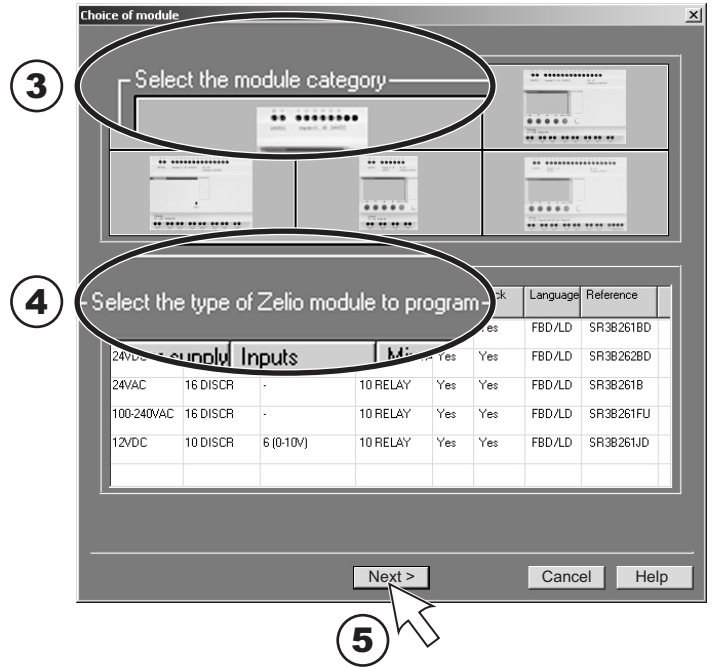
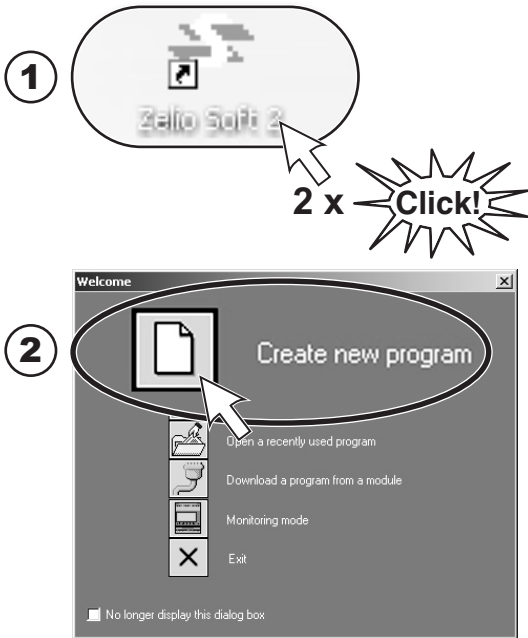


B Hardware cabling for programming and transfer / Câblage du matériel pour la programmation et le transfert / Verkabelung der Hardware für die Programmierung und die Übertragung Cableado del material para la programación y la transferencia / Cavi di collegamento per la programmazione e il trasferimento / Cablagem do hardware para a programação e a transferência

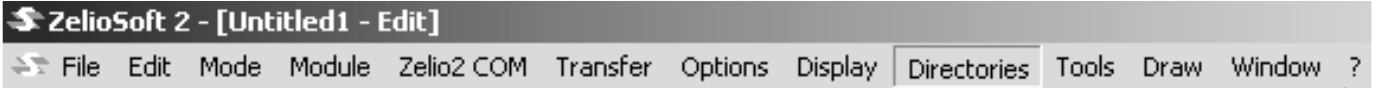


Programming and transfer / Programmation et transfert / Programmierung und Übertragung
 Programación y transferencia / Programmazione e trasferimento / Programação e transferência

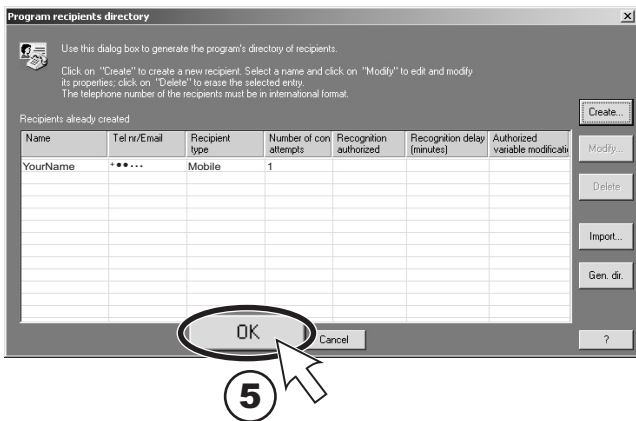
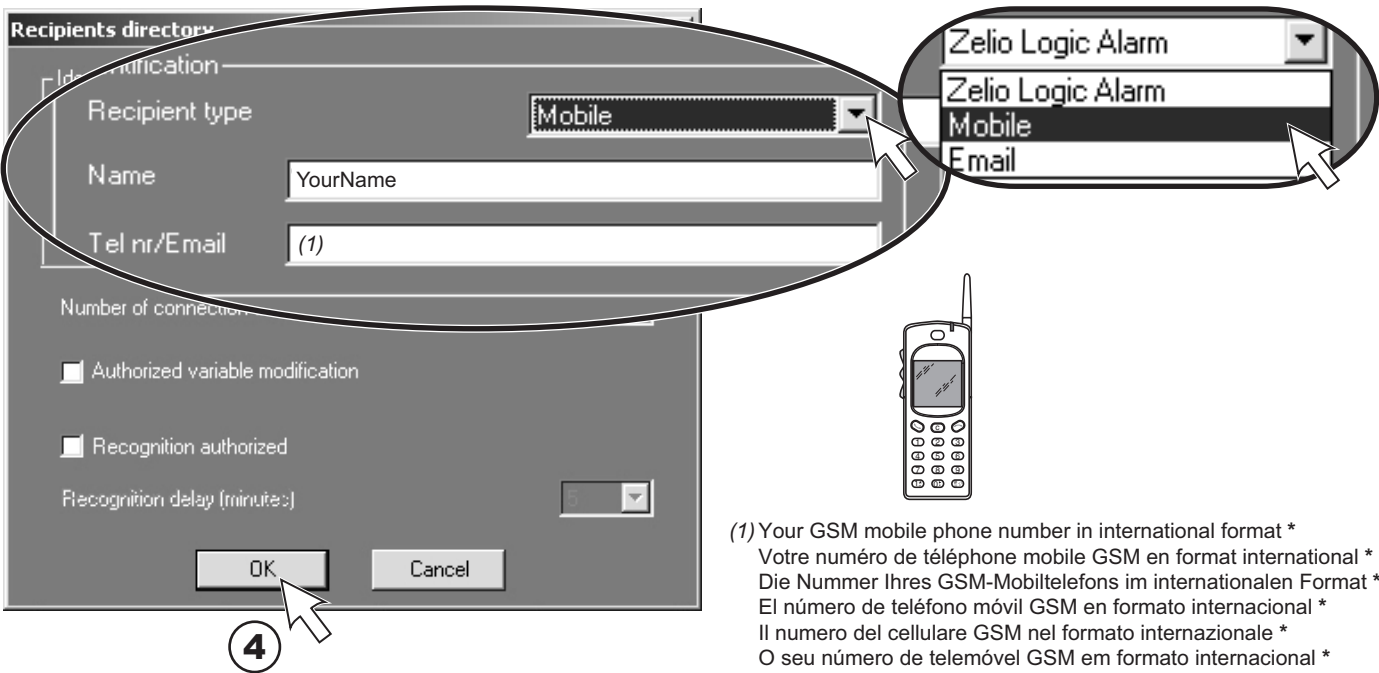
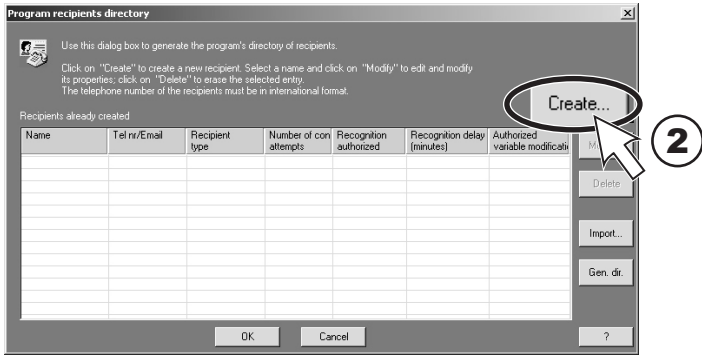
C



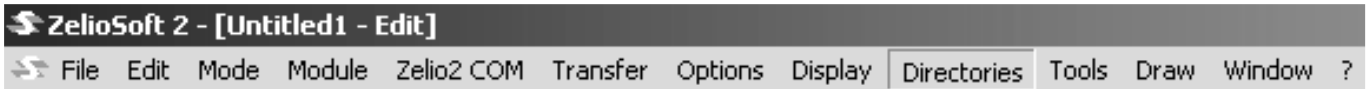
D



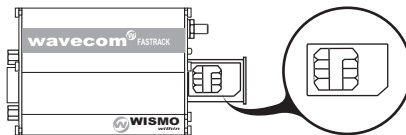
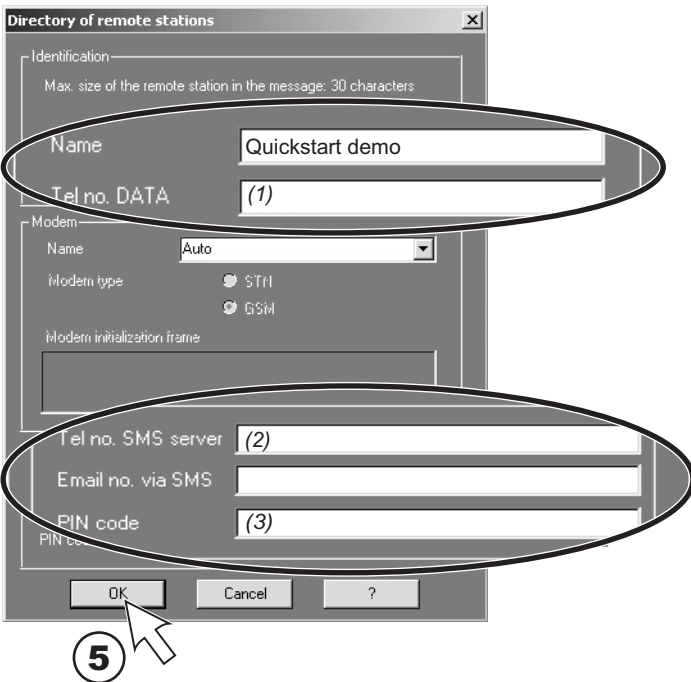
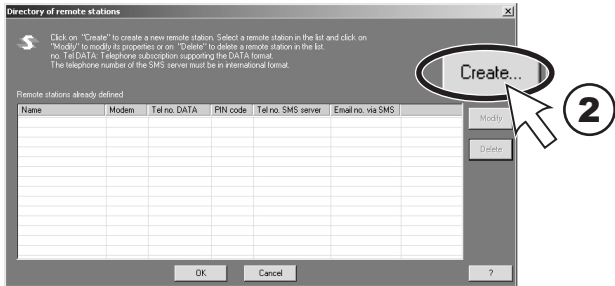
- 1 Directories : Program recipients directory...
 Annuaire : Annuaire des destinataires du programme...
 Verzeichnisse : Verzeichnis der Programmempfänger...
 Libretas : Libreta de direcciones del programa...
 Elenchi : Elenco dei destinatari del programma...
 Listas : Lista de destinatários do programa...



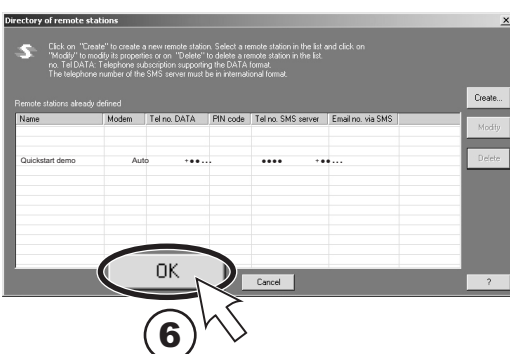
E



- 1 Directories : Directory of remote stations...
- Annuaire : Annuaire des stations distantes...
- Verzeichnis : Verzeichnis der dezentralen Stationen...
- Libretas : Libreta de estaciones remotas...
- Elenchi : Elenco delle stazioni remote...
- Listas : Lista das estações remotas...

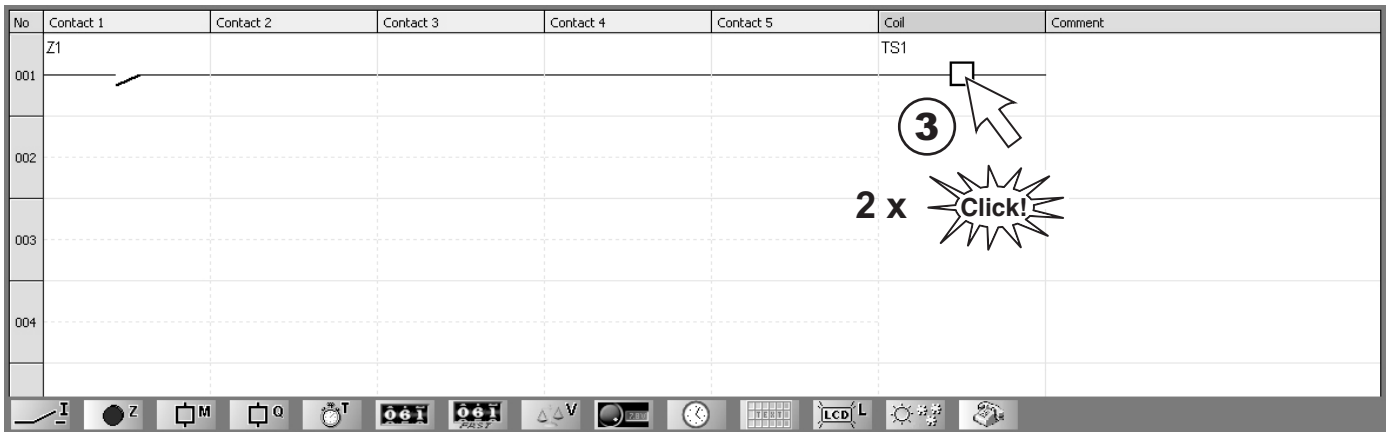
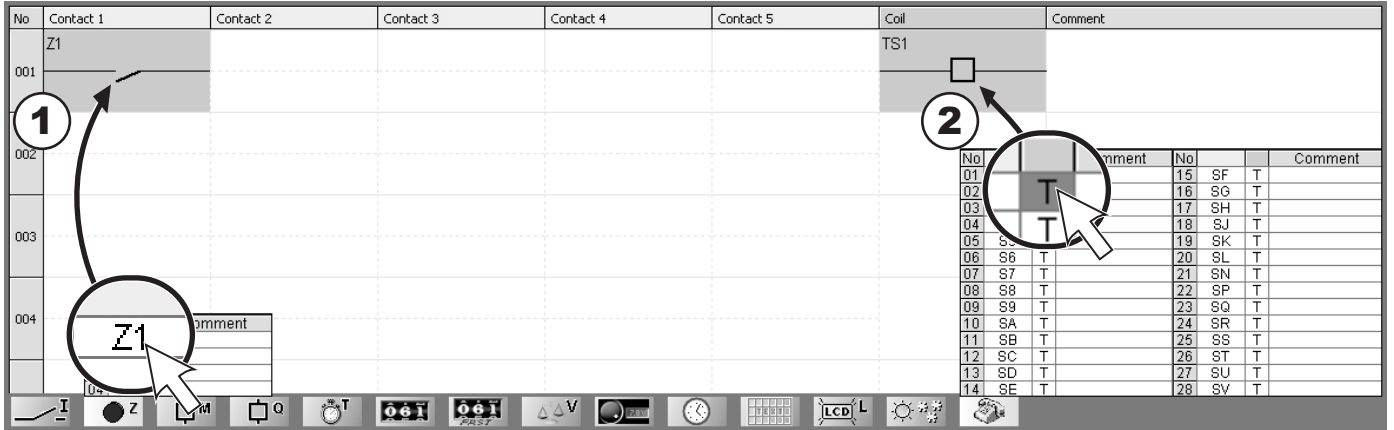


- (1) The SIM card number of your SR2MOD02 (in international format)* / Le numéro de la carte SIM de votre SR2MOD02 (au format international)* / Die Nummer der SIM-Karte Ihres SR2MOD02 (im internationalen Format)*
El número de la tarjeta SIM de su SR2MOD02 (en formato internacional)* / Il numero della scheda SIM del vostro SR2MOD02 (in formato internazionale)* / O número do cartão SIM do seu SR2MOD02 (em formato internacional)*
* **International format : replace 00 by +**
- (2) The SIM card's SMS server number of your SR2MOD02 (in international format)* / Le numéro de serveur SMS de la carte SIM de votre SR2MOD02 (au format international)* / Die Nummer der SMS-Server der SIM-Karte Ihres SR2MOD02 (im internationalen Format)*
El número de servidor SMS de la tarjeta SIM de su SR2MOD02 (en formato internacional)* / Il numero del server SMS della scheda SIM del vostro SR2MOD02 (in formato internazionale)* / O número do servidor SMS do cartão SIM do seu SR2MOD02 (em formato internacional)*
* **International format : replace 00 by +**
- (3) The SIM card's PIN code of your SR2MOD02 (do not enter if deactivated) / Le code PIN de la carte SIM de votre SR2MOD02 (ne pas remplir si désactivé) / Der PIN-Code der SIM-Karte Ihres SR2MOD02 (nicht ausfüllen, falls deaktiviert)
El código PIN de la tarjeta SIM de su SR2MOD02 (no lo introduzca si está bloqueada) / Il codice PIN della scheda SIM del vostro SR2MOD02 (non indicarlo se disattivata) / O código PIN do cartão SIM do seu SR2MOD02 (não preencher se estiver desactivado)



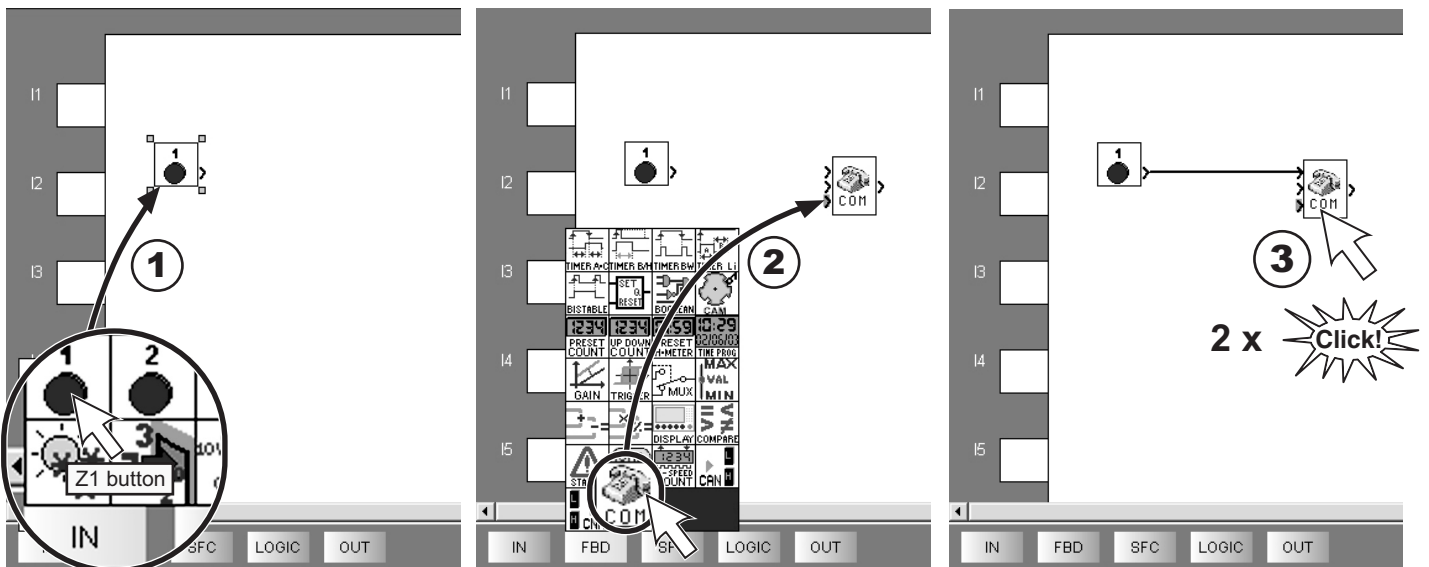
F

Ladder



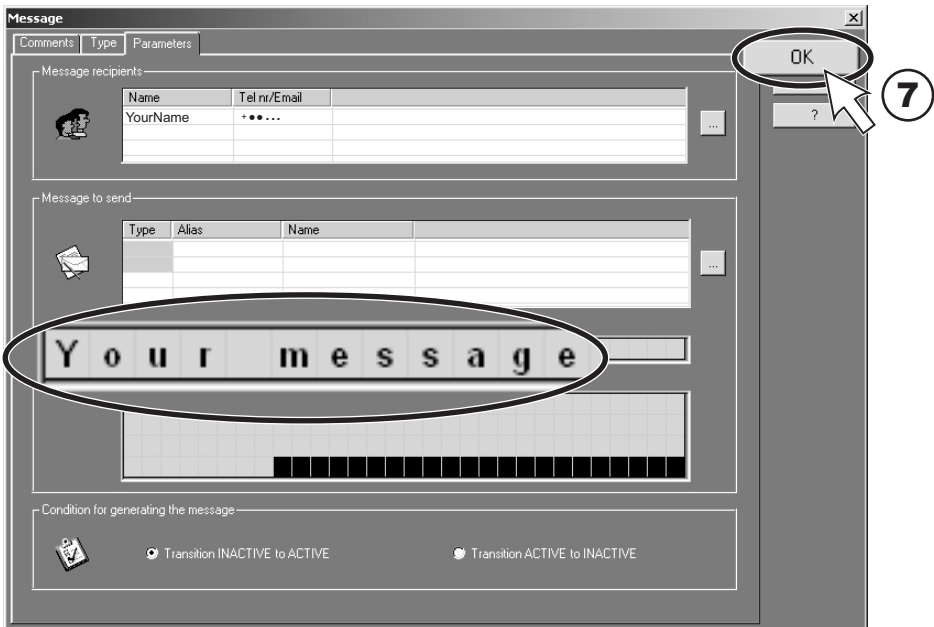
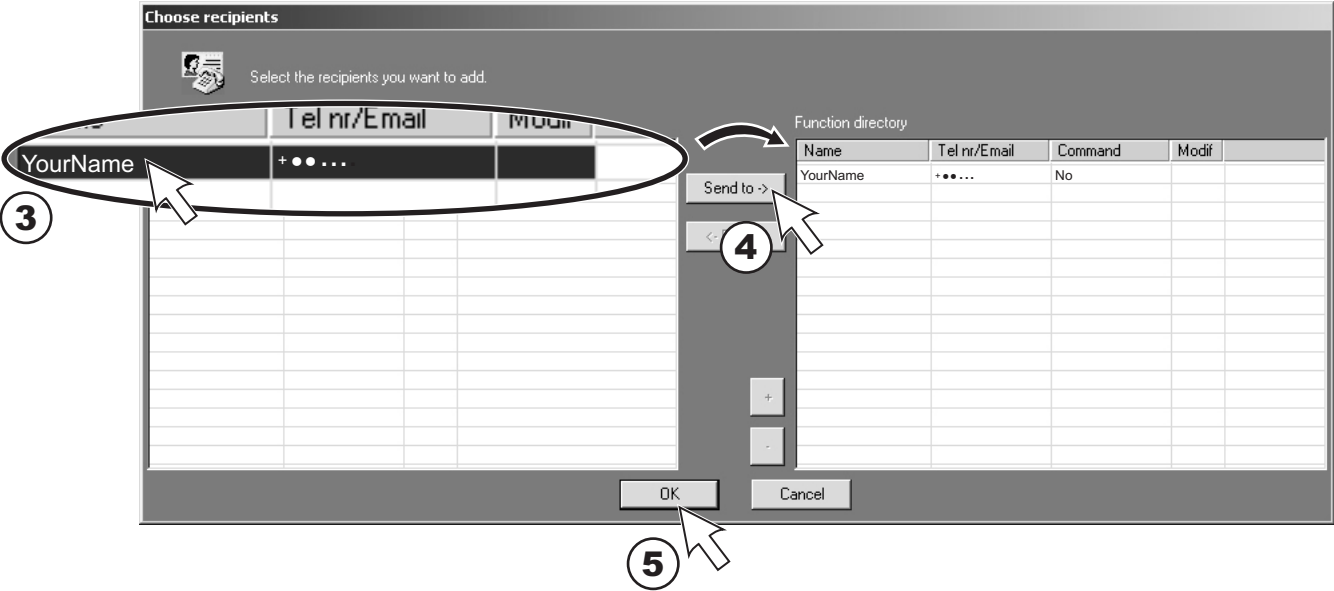
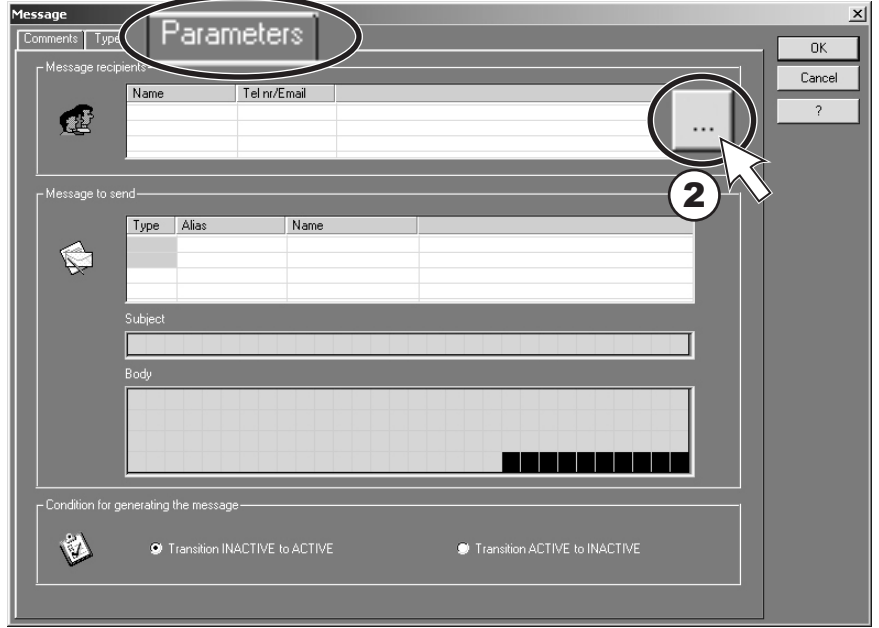
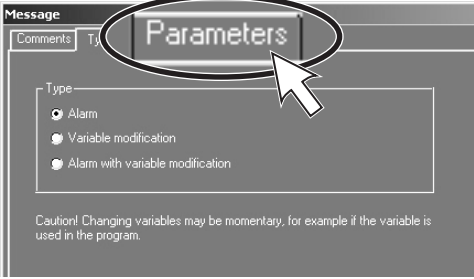
or / ou / oder / o bien / oppure / ou

FBD

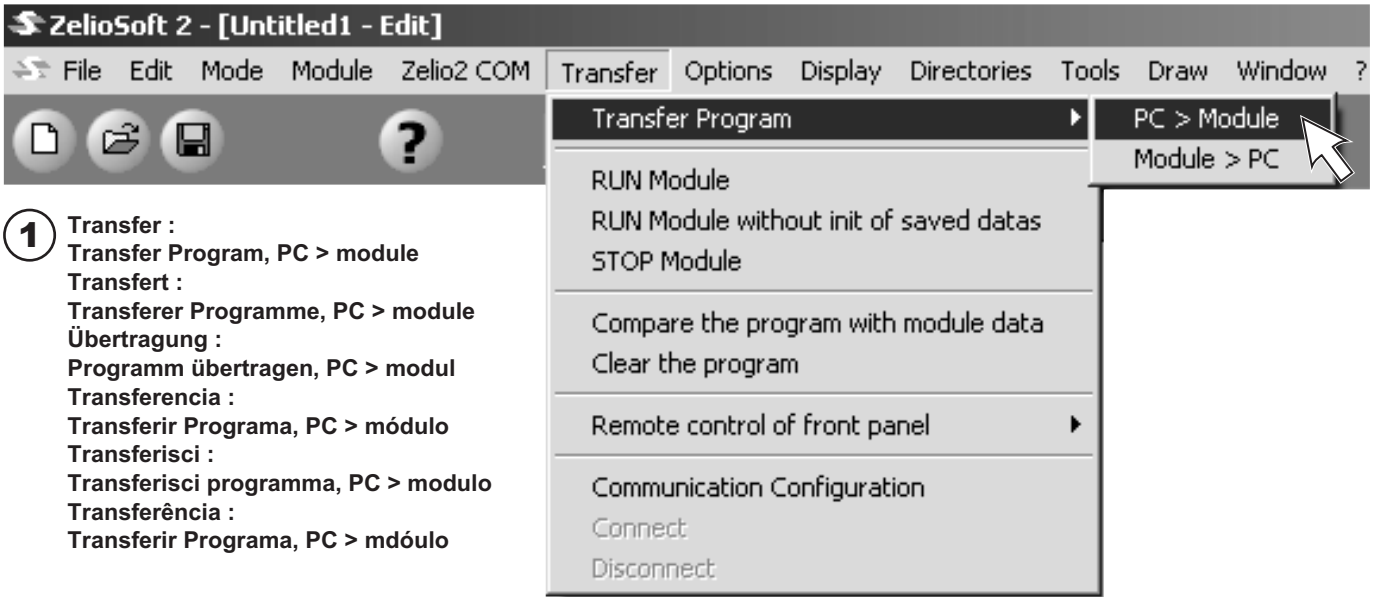


G

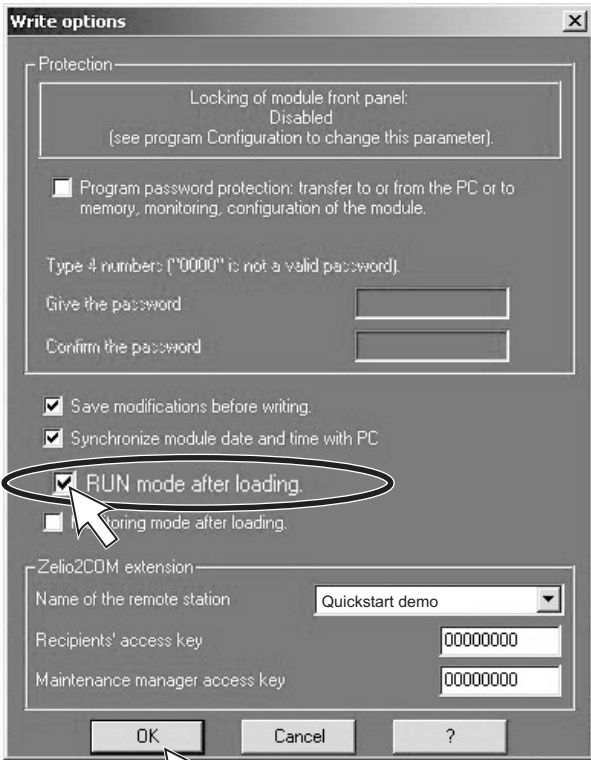
1



H

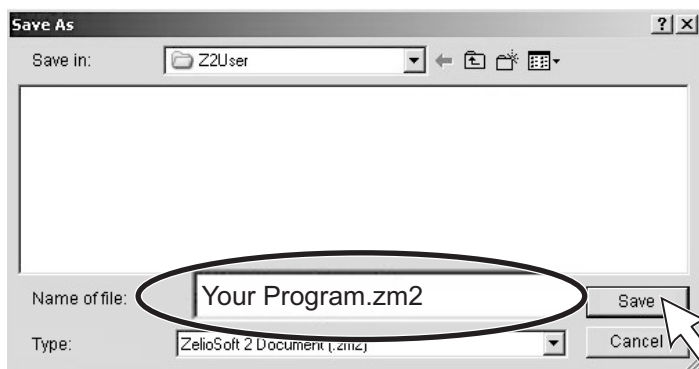


- 1 Transfer :
Transfer Program, PC > module
Transfer :
Transferer Programme, PC > module
Übertragung :
Programm übertragen, PC > modul
Transferencia :
Transferir Programa, PC > módulo
Transferisci :
Transferisci programma, PC > modulo
Transferência :
Transferir Programa, PC > módulo



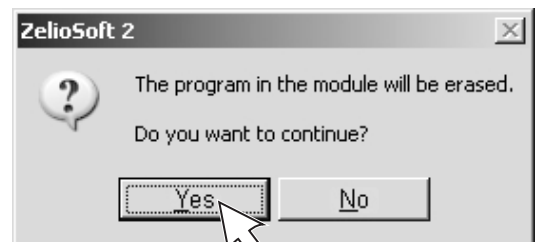
2

3



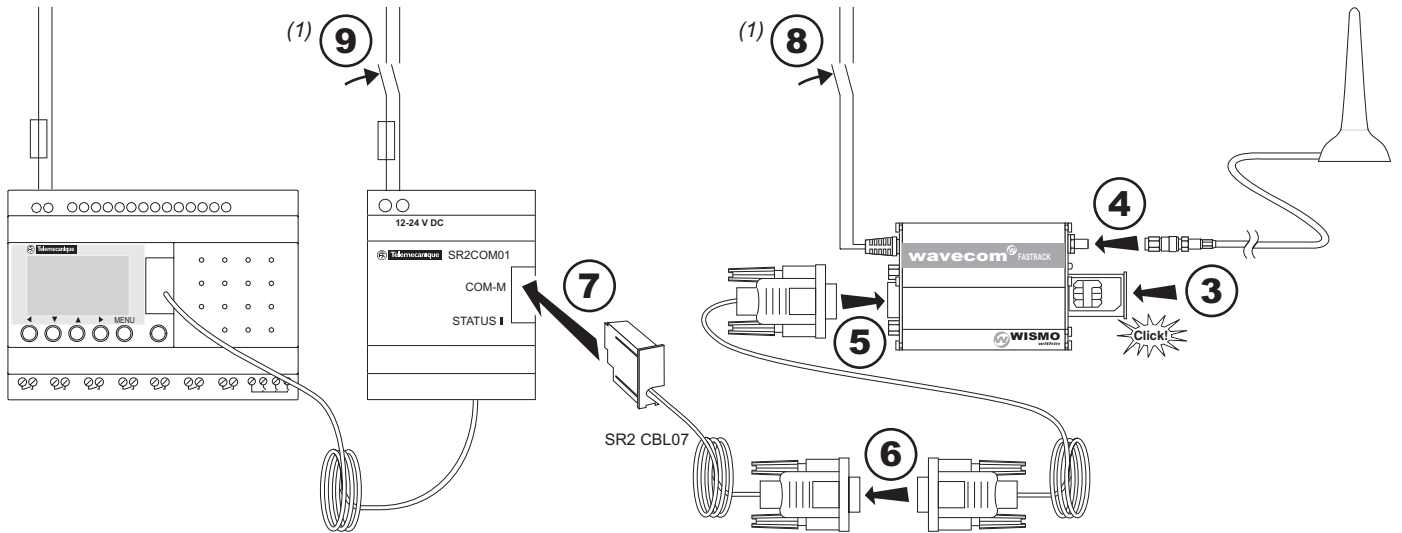
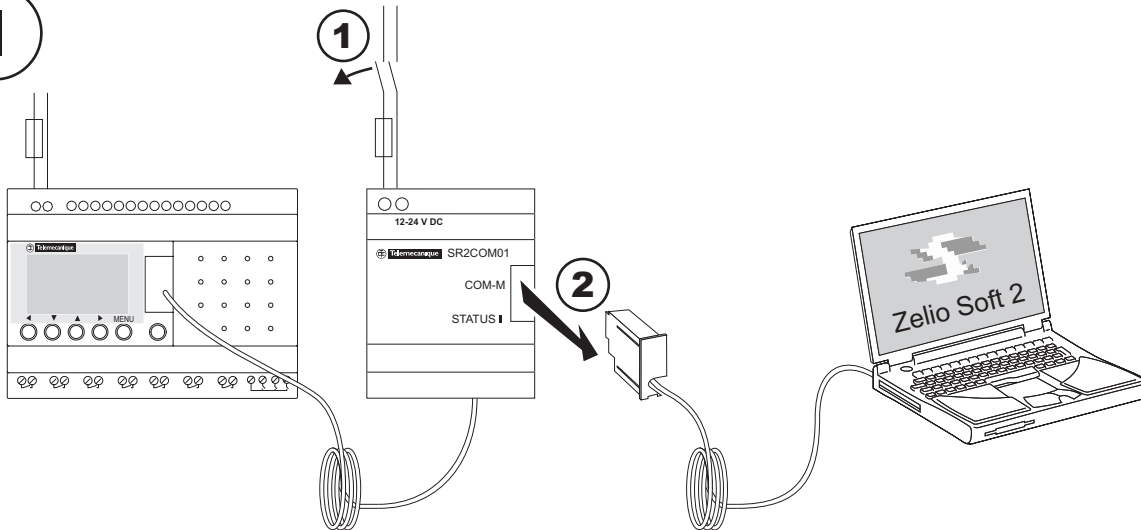
4

5



6

I



(1) Do not switch the SR2COM01 on before the SR2MOD02. / Ne mettez pas sous tension le SR2 COM01 avant le SR2 MOD02.
 Schalten Sie das SR2COM01 nicht vor dem SR2MOD02 ein. / No conecte el dispositivo SR2COM01 antes del SR2MOD02.
 Non mettere sotto tensione la SR2COM01 prima della SR2MOD02. / Não ligue o SR2COM01 antes do SR2MOD02.

