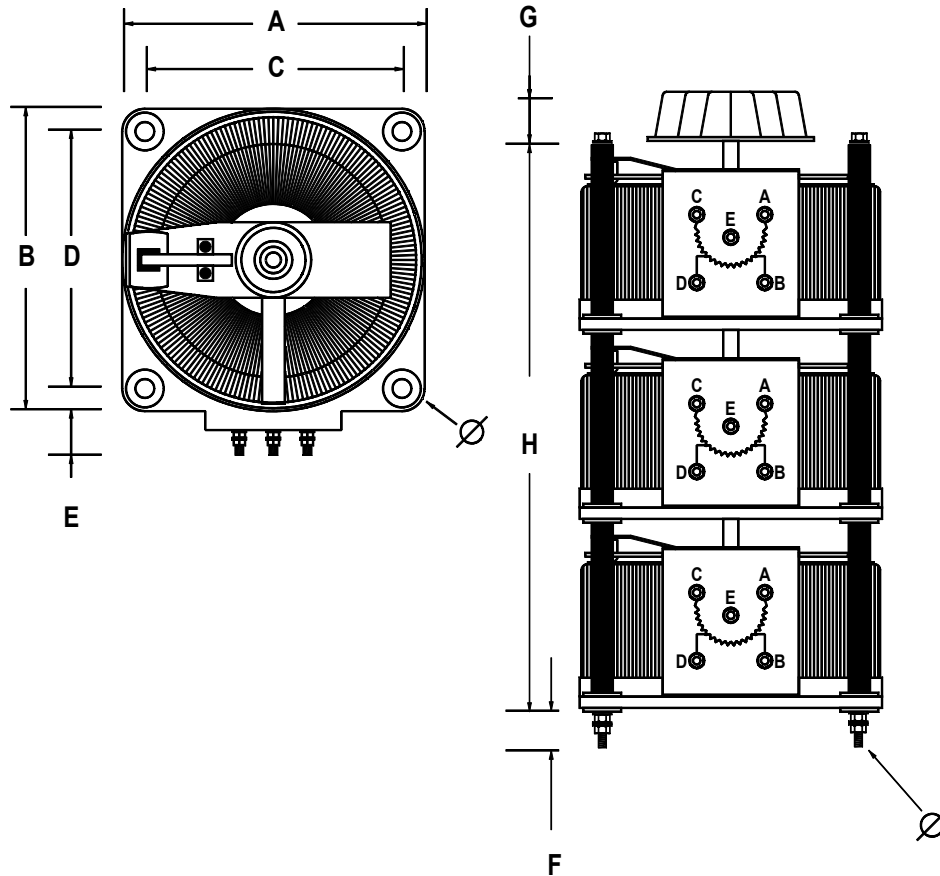
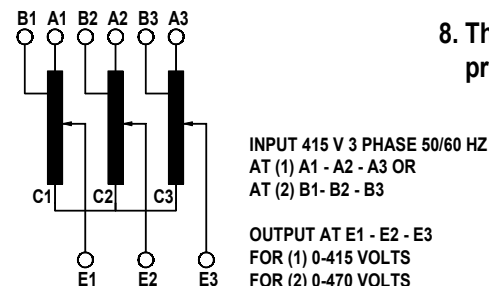


### 3 PH OPEN STYLE VARIABLE TRANSFORMERS INSTALLATION AND SAFETY INSTRUCTIONS

1. Read all of these instructions before you use the transformer.
2. This transformer is not designed to provide mains isolation.
3. Variable transformers operate at mains voltage.  
**DO NOT EXCEED THE MAXIMUM VOLTAGE AND CURRENT RATING.**
4. Installation connection and maintenance should only be carried out by suitably qualified personnel.
5. When connected to the electrical supply the terminals, brushes and track face are at mains potential with a potentially lethal voltage.
6. The input must always be applied across the load.  
Never connect the transformer in series with the load.
7. The carbon brush should be inspected for damage or wear, faulty or worn brushes will result in damage to the windings.
8. This transformer must be earthed using the earth studs provided.



Type	Output Amps	DIMENSIONS (mm)								Weight Kgs
		A	B	C	D	E	F	G	H	
CMV2F-3	2	110	110	92	92	15	25	30	330	10
CMV4F-3	4	175	175	146	146	25	30	50	410	20
CMV5F-3	5	175	175	146	146	25	30	50	410	22
CMV8F-3	8	175	175	146	146	25	30	50	410	28
CMV10F-3	10	175	175	146	146	25	30	50	410	29
CMV15F-3	15	225	225	176	176	25	40	50	425	43
CMV20F-3	20	225	225	176	176	25	50	50	440	52
CMV28F-3	28	300	300	238	238	60	50	50	527	67



CONNECTION ARRANGEMENT