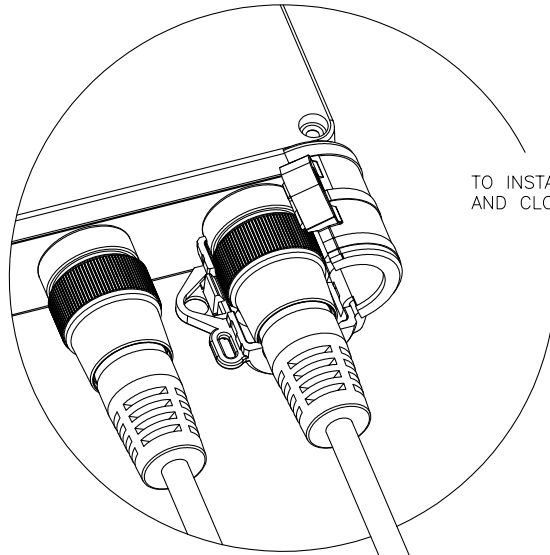


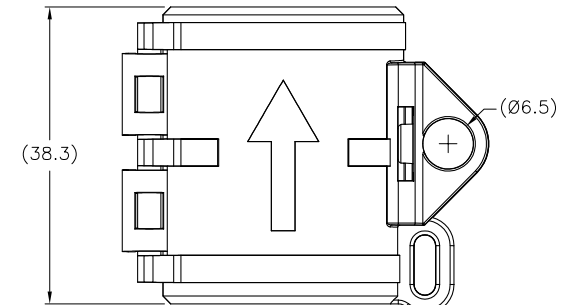
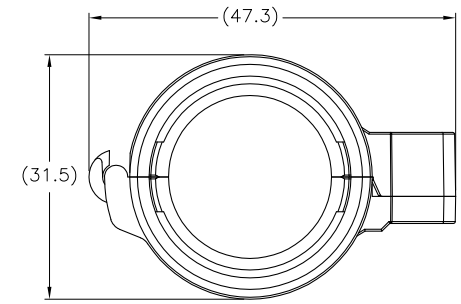
SPECIFICATIONS

HOUSING MATERIAL/COLOR

NYLON 66/BLACK

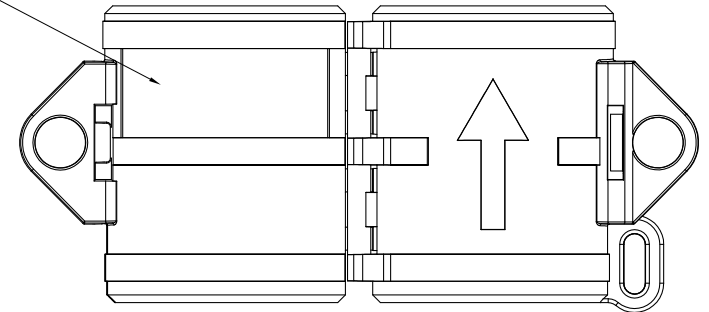


TO INSTALL LOCKOUT DEVICE, PLACE AROUND CORDSET END AND CLOSE UNTIL CONNECTOR SNAPS CLOSED.

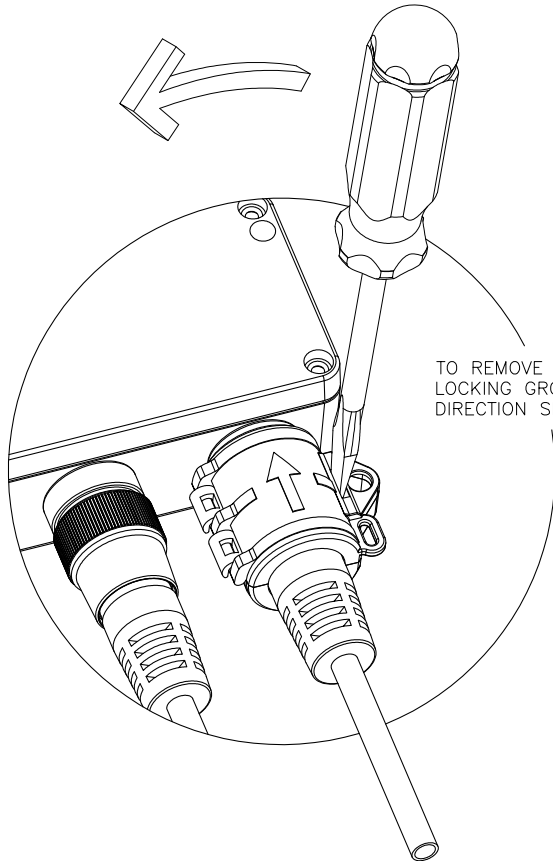


RECEPTACLE FOR
OPTIONAL TETHER STRAP

CAUTION LABEL



OPENED VIEW OF LOCKOUT DEVICE
SOURCE DRAWING - FOR REFERENCE ONLY



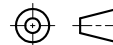
TO REMOVE LOCKOUT DEVICE, INSERT SMALL SCREWDRIVER INTO LOCKING GROOVE AS SHOWN IN PICTURE. ROTATE SCREWDRIVER IN DIRECTION SHOWN UNTIL LOCKING DEVICE RELEASES.

LOCKOUT DEVICE FITS TURCK **MOLDED** MINIFAST A SIZED CORDSETS TO MINIFAST RECEPTACLES.

RELATED DOCUMENTS

- 1.
- 2.
- 3.
- 4.

3RD ANGLE PROJECTION



THIS DRAWING IS
PROPERTY OF
TURCK INC. USE OF
THIS DOCUMENT
WITHOUT WRITTEN
PERMISSION IS
PROHIBITED.

TURCK INC
High Technology Sensors and Automation Controls

3000 CAMPUS DRIVE
MINNEAPOLIS, MN 55441
1-800-544-7769
(763) 553-7300
(763) 553-0708 fax
turck.com

MATERIAL

DRFT

RDS

DATE 12/29/04

DESCRIPTION

LOCK-MINI

DSGN

SCALE 1=1.0

FINISH

ALL DIMENSIONS
DISPLAYED ON THIS
DRAWING ARE FOR
REFERENCE ONLY

UNIT OF MEASUREMENT

MILLIMETERS

IDENTIFICATION NO.

A9105

REV

B

CONTACT TURCK
FOR MORE
INFORMATION

DO NOT SCALE THIS DRAWING

FILE: A9105

SHEET 1 OF 1

| | | | | |
|-----|--|-----|----------|---------|
| B | UPDATE GRAPHICS TO CURRENT DESIGN, SEE ECO | RWC | 11/07/08 | 21897 |
| REV | DESCRIPTION | BY | DATE | ECO NO. |