

Rittal – The System.

Faster – better – everywhere.

Mounting plate for GA – GA 9116.700

Date : Dec 18, 2019

ENCLOSURES

POWER DISTRIBUTION

CLIMATE CONTROL

IT INFRASTRUCTURE

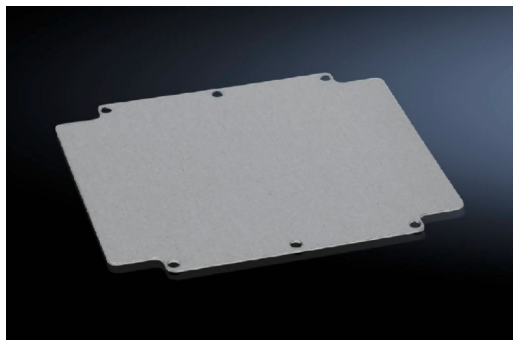
SOFTWARE & SERVICES

FRIEDHELM LOH GROUP



Mounting plate for GA – GA 9116.700

created: 18.12.2019 build on www.rittal.com/uk-en



Product description

Description: For universal interior installation, with mounting holes.

Material: Sheet steel

Surface finish: Zinc-plated

Product features

To fit: Enclosure type: GA
Width: = 202 mm
Height: = 232 mm

Mounting plate: Width: 183 mm
Height: 214 mm

Packs of: 1 pc(s).

Weight/pack: 1.18 kg

EAN: 4028177154360

Customs tariff number: 73269098

ETIM 7.0: EC000213

ETIM 6.0: EC000213

eCl@ss 8.0/8.1: 27409216

eCl@ss 6.0/6.1: 27189234

Product description: GA Mounting plate, WH: 183x214 mm
