

Description

STAINLESS STEEL BOLT HOLE CASTOR, RED POLYURETHANE 125MM

Fixed

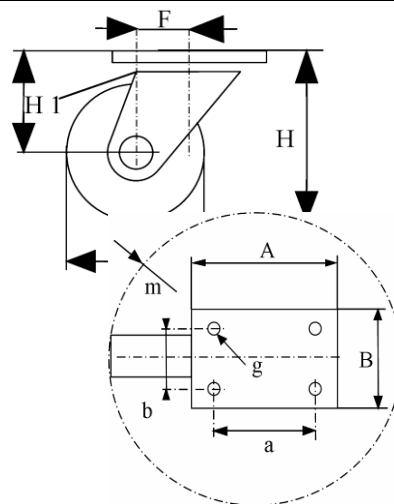
Part Number
Swivel
KP41OA125-28L



Swivel and brake
KP41OD125-28L



	Fixed	Swivel	Swivel+brake
Wheel Diameter ØD	125 mm		
Overall Height H	155 mm ±1		
Center hole	13 mm		
Offset F ±1	\	39 mm	39 mm
Width of Tread	35 mm±0,5		
Hardness of tread	shore A ± 98		
Load capacity	200 Kg		
Weight		0,72 kg	0,91 kg
Temperature	- 20 / + 60 °C		



Castor Assembly :

Pressed stainless steel -AISI 304-. Swivel on two rows of balls.
Central bolt hole fitting
Total lock. Metal pedal.

Wheel :

Wheel centre made of White Polyamide.
Tread : Red injected Polyurethane non marking.
Hub : Plain bore.

Features :

Low starting effort. High load capacity.
Lightweight, highly resistant to knocks and other impacts, abrasion as well as a great many chemical substances.
Corrosion resistant, easy to clean. Specially designed for humid environments.
Suited for Food industry, Hospital or Industrial Kitchen equipment.
Non staining red tyre.
Medium duty.