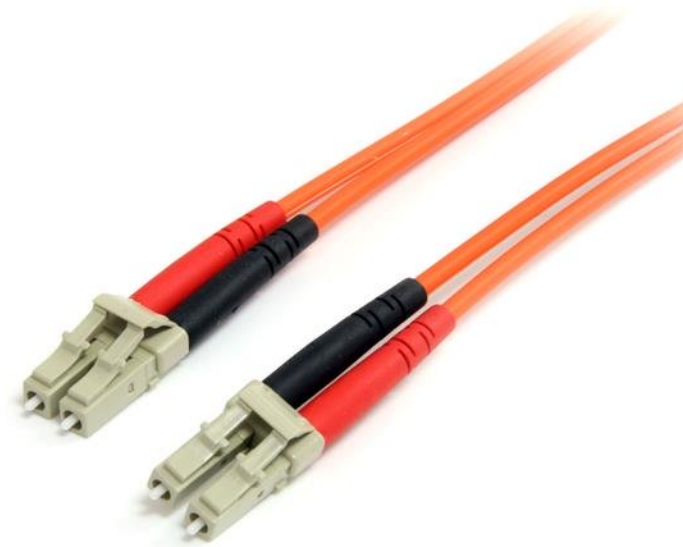


## Fiber Optic Cable - Multimode Duplex 62.5/125 - LSZH - LC/LC - 2 m

Product ID: FIBLCLC2



The FIBLCLC2 2-meter (6.6ft) Multimode 62.5/125 Duplex Fiber Patch Cable is terminated at both ends with LC (male) connectors, to provide the necessary connection between fiber networking devices for high-speed, long distance networks.

This LC-LC patch cable is housed in a LSZH (Low-Smoke, Zero-Halogen) flame retardant jacket, to ensure minimal smoke, toxicity and corrosion when exposed to high sources of heat, in the event of a fire. Making it ideal for use in industrial settings, central offices and schools, as well as residential settings where building codes are a consideration.

To ensure optimum performance, our multimode fiber duplex cable is individually tested and certified to be within acceptable optical insertion loss limits for guaranteed compatibility and 100% reliability.

Backed by Lifetime Warranty, our LC-LC Multimode Fiber Patch cable is guaranteed to provide long-lasting dependability, and top quality performance.

### Certifications, Reports and Compatibility



### Applications

- Ideal solution for data applications requiring high speed data transmission
- Broadband systems
- Telecommunication/Data communication
- Used by long distance networks with mission critical data

### Features

- Attenuation loss meets or exceeds industry standards
- LSZH (Low-Smoke, Zero-Halogen) cable jacket
- Immune to electrical interference

<b>Hardware</b>	Warranty	Lifetime
	Fiber Size	62.5/125
	Fire Rating	LSZH Rated (Low Smoke Zero Halogen)
<b>Performance</b>	Cable Rating	1Gbps / 10Gbps
	Fiber Classification	OM1
	Maximum Data Transfer Rate	10Gbps
	Type	Multi Mode
<b>Connector(s)</b>	Connector A	1 - Fiber Optic LC Duplex Male
	Connector B	1 - Fiber Optic LC Duplex Male
<b>Environmental</b>	Humidity	0~90% RH
	Operating Temperature	-20°C to 60°C (-4°F to 140°F)
	Storage Temperature	-20°C to 60°C (-4°F to 140°F)
<b>Physical Characteristics</b>	Cable Length	2 m [6.6 ft]
	Color	Orange
	Product Height	0.000
	Product Length	2 m [6.6 ft]
	Product Width	0.000
	Weight of Product	18 g [0.6 oz]
<b>Packaging Information</b>	Package Height	21.2 cm [8.3 in]
	Package Length	20 cm [7.9 in]
	Package Width	9 mm [0.4 in]
	Shipping (Package) Weight	0 kg [0.1 lb]
<b>What's in the Box</b>	Included in Package	1 - 2m Multimode 62.5/125 Duplex Fiber Patch Cable LC - LC

Product appearance and specifications are subject to change without notice.