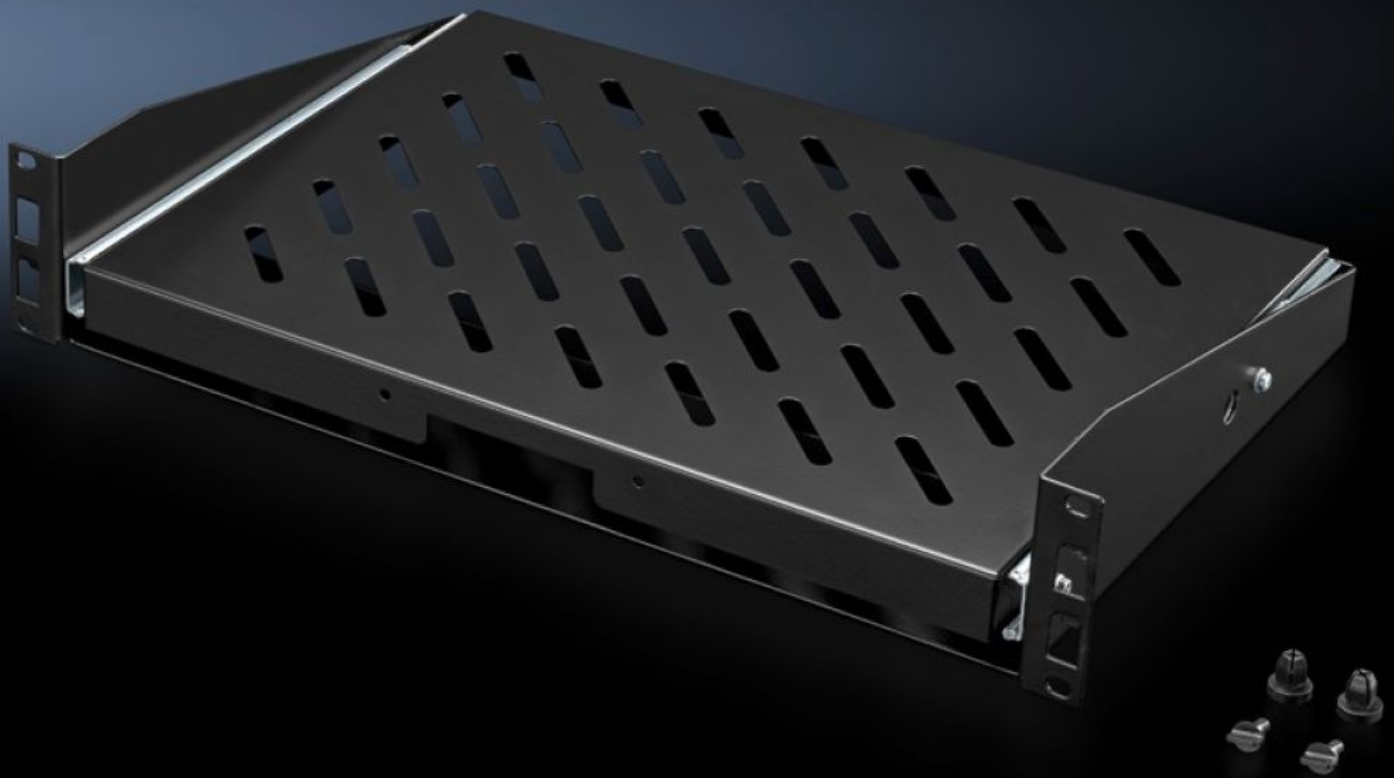


Rittal – The System.

Faster – better – everywhere.



DK 5501.635

Component shelf, pull-out, 2 U

State: 18/04/2023 (Source: rittal.com/com-en)

ENCLOSURES

POWER DISTRIBUTION

CLIMATE CONTROL

IT INFRASTRUCTURE

SOFTWARE & SERVICES

FRIEDHELM LOH GROUP



DK 5501.635 - Component shelf, pull-out, 2 U for one 482.6 mm (19") mounting level

This complete set comprises the pre-configured variant including telescopic slides, moulded handle, flange and locking pins.



Features

Model No.	DK 5501.635
Product description	For simple, front installation of wall-mounted or floor-standing enclosures with at least one 482.6 mm (19") mounting level. This complete set includes the pre-configured variant including telescopic slides, moulded handle, flange and locking pins.
Benefits	Simple, tool-free assembly Fully extendible Self-locking
Material	Sheet steel
Surface finish	Spray-finished
Colour	RAL 9005
Supply includes	Component shelf, pre-configured Assembly parts
Load capacity static	250 N
Contact surface	Width: 430 mm Depth: 300 mm
Packs of	1 pc(s).
Weight/pack	3.7 kg

Features

Copper weight (kg per piece)	0
Customs tariff number	73269098
EAN	4028177679078
ETIM 7.0	EC002620
ECLASS 8.0	27189261

Approvals

Approvals	GOST
-----------	------