

# Araldite®

professional adhesives



## Araldite® Rapid 2x100ml Tube

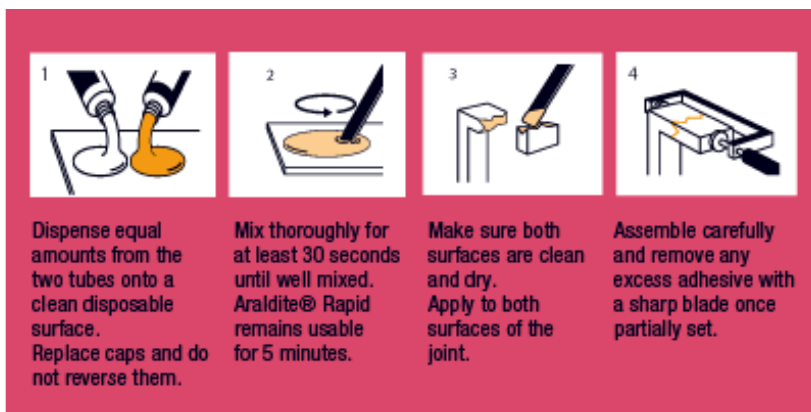
A strong, long lasting solvent free adhesive which is water resistant and can be painted or sanded.

### Important

Bonds metal, wood, masonry, ceramics, glass, dry concrete, chipboard, leather, cardboard, fabric, rubber and most plastics (except polyethylene, polypropylene, Teflon®).

Make sure surfaces are clean and free from dust, corrosion, dirt and grease.

For optimum bonding, slightly roughen surfaces with sandpaper and degrease metals with a suitable solvent. During assembly apply light pressure to the joint until set (clamps, tape around 20 minutes. Allow 3 hours to attain full strength before rough handling or sanding.



### How to apply

Araldite® Rapid is a strong 2-component epoxy with fast setting. Parts repositionable for 4 minutes. Oil, chemical and impact resistant. High temperature resistance (-30°C to 65°C). Do not use to repair or bond items that will contact food or drink. Not recommended for bonding rearview mirrors to car windscreens.

### Storage

Should be stored in a dry place at room temperature in the original tubes.

### New

Environmentally friendly product formulation.

Copyright© 2011. Huntsman Advanced Materials (Switzerland) GmbH. All Rights Reserved.

Araldite® is a registered trademark of Huntsman Corporation or an affiliate thereof in one or more, but not all countries.

[www.go-araldite.com](http://www.go-araldite.com)