

PCB terminal block - MKDS 1/ 3-3,5 HT BK - 1984950

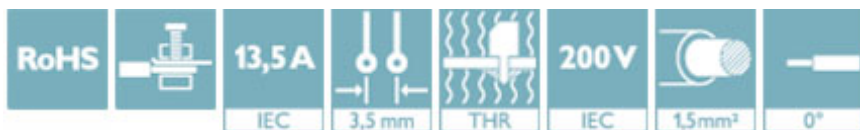
Please be informed that the data shown in this PDF Document is generated from our Online Catalog. Please find the complete data in the user's documentation. Our General Terms of Use for Downloads are valid (<http://phoenixcontact.com/download>)




PCB terminal block, Nominal current: 13.5 A, Nom. voltage: 200 V, Pitch: 3.5 mm, Number of positions: 3, Connection method: Screw connection with tension sleeve, Mounting: THR soldering, Conductor/PCB connection direction: 0 °, Color: black, This article can be soldered in the reflow furnace together with SMD components.

Why buy this product

- ✓ Well-known connection principle allows worldwide use
- ✓ Low temperature rise, thanks to maximum contact force
- ✓ Allows connection of two conductors
- ✓ Extremely small design for the respective conductor cross section
- ✓ Designed for integration into the SMT soldering process



Key Commercial Data

| | |
|--------------------------------------|---|
| Packing unit | 50 STK |
| Minimum order quantity | 50 STK |
| GTIN |  4 017918 908096 |
| GTIN | 4017918908096 |
| Weight per Piece (excluding packing) | 2.300 g |
| Custom tariff number | 85369010 |
| Country of origin | Germany |

Technical data

Dimensions

| | |
|-----------------------|----------|
| Length | 7.3 mm |
| Pitch | 3.5 mm |
| Dimension a | 7.00 mm |
| Width | 11.00 mm |
| Constructional height | 8.5 mm |
| Height | 12 mm |
| Solder pin [P] | 3.5 mm |

PCB terminal block - MKDS 1/ 3-3,5 HT BK - 1984950

Technical data

Dimensions

| | |
|----------------|--------------|
| Pin dimensions | 0,5 x 0,9 mm |
| Pin spacing | 3.50 mm |
| Hole diameter | 1.1 mm |

General

| | |
|--|---------------------|
| Range of articles | MKDS 1/..-HT |
| Insulating material group | IIIa |
| Rated surge voltage (III/3) | 2.5 kV |
| Rated surge voltage (III/2) | 2.5 kV |
| Rated surge voltage (II/2) | 2.5 kV |
| Rated voltage (III/3) | 63 V |
| Rated voltage (III/2) | 200 V |
| Rated voltage (II/2) | 200 V |
| Connection in acc. with standard | EN-VDE |
| Nominal current I_N | 13.5 A |
| Nominal cross section | 1.5 mm ² |
| Insulating material | PA |
| Solder pin surface | Sn |
| Flammability rating according to UL 94 | V0 |
| Stripping length | 5 mm |
| Number of positions | 3 |
| Screw thread | M2 |
| Tightening torque, min | 0.22 Nm |
| Tightening torque max | 0.25 Nm |

Connection data

| | |
|--|----------------------|
| Conductor cross section solid min. | 0.14 mm ² |
| Conductor cross section solid max. | 1.5 mm ² |
| Conductor cross section flexible min. | 0.14 mm ² |
| Conductor cross section flexible max. | 1.5 mm ² |
| Conductor cross section flexible, with ferrule without plastic sleeve min. | 0.25 mm ² |
| Conductor cross section flexible, with ferrule without plastic sleeve max. | 0.5 mm ² |
| Conductor cross section flexible, with ferrule with plastic sleeve min. | 0.25 mm ² |
| Conductor cross section flexible, with ferrule with plastic sleeve max. | 0.5 mm ² |
| Conductor cross section AWG min. | 26 |
| Conductor cross section AWG max. | 16 |
| 2 conductors with same cross section, solid min. | 0.14 mm ² |
| 2 conductors with same cross section, solid max. | 0.5 mm ² |
| 2 conductors with same cross section, stranded min. | 0.14 mm ² |
| 2 conductors with same cross section, stranded max. | 0.34 mm ² |

Standards and Regulations

PCB terminal block - MKDS 1/ 3-3,5 HT BK - 1984950

Technical data

Standards and Regulations

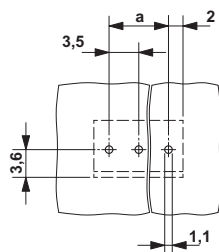
| | |
|--|--------|
| Connection in acc. with standard | EN-VDE |
| | CSA |
| Flammability rating according to UL 94 | V0 |

Environmental Product Compliance

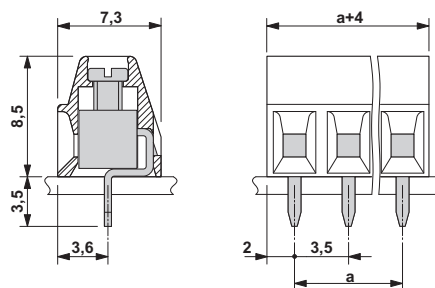
| | |
|------------|---|
| China RoHS | Environmentally Friendly Use Period = 50 |
| | For details about hazardous substances go to tab "Downloads", Category "Manufacturer's declaration" |

Drawings

Drilling diagram



Dimensional drawing



Approvals

Approvals

Approvals

CSA / SEV / CCA / IECCEB CB Scheme / EAC / cULus Recognized

Ex Approvals

Approval details

| | | | |
|--------------------------------|-------|---|-------|
| CSA | | http://www.csagroup.org/services/testing-and-certification/certified-product-listing/ | 13631 |
| | B | D | |
| mm ² /AWG/kcmil | 28-16 | 28-16 | |
| Nominal current I _N | 10 A | 10 A | |
| Nominal voltage U _N | 150 V | 300 V | |

PCB terminal block - MKDS 1/ 3-3,5 HT BK - 1984950

Approvals

| | | | |
|----------------------------|--|---|------------|
| SEV | | https://www.electrosuisse.ch/en/meta/shop/product-certificates.html | IK-3542-M1 |
| mm ² /AWG/kcmil | | 1.5 | |
| Nominal current IN | | 12 A | |
| Nominal voltage UN | | 125 V | |

| | | | |
|----------------------------|--|-------|---------|
| CCA | | | IK-2722 |
| mm ² /AWG/kcmil | | 1.5 | |
| Nominal current IN | | 12 A | |
| Nominal voltage UN | | 125 V | |

| | | | |
|----------------------------|--|---|---------|
| IECEE CB Scheme | | http://www.iecee.org/ | CH-8225 |
| mm ² /AWG/kcmil | | 1.5 | |
| Nominal current IN | | 12 A | |
| Nominal voltage UN | | 125 V | |

| | | | |
|-----|--|--|---------|
| EAC | | | B.01742 |
|-----|--|--|---------|

| | | | |
|----------------------------|-------|---|-----------------|
| cULus Recognized | | http://database.ul.com/cgi-bin/XYV/template/LISEXT/1FRAME/index.htm | E60425-19770427 |
| | B | D | |
| mm ² /AWG/kcmil | 30-16 | 30-16 | |
| Nominal current IN | 10 A | 10 A | |
| Nominal voltage UN | 300 V | 300 V | |