



**Part Number :** [5031493400](#)

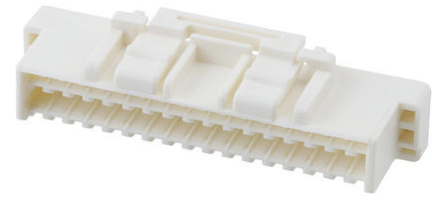
**Product Description :** CLIK-Mate Plug Housing, 1.50mm Pitch, Dual Row, Positive Lock, 34 Circuits, Natural

**Series Number :** 503149

**Status :** Active

**Product Category :** Connector Housings

---



## Documents & Resources

### Drawings

[5031493400\\_sd.pdf](#)

### 3D Models and Design Files

[STEP AP242](#)

[SOLIDWORKS](#)

[Creo](#)

[5031493400.dxf](#)

### Specifications

[SPK-503149-001-001.pdf](#)

[5031490000-PS-000.pdf](#)

[5031491000-PS-000.pdf](#)

[5031491001-PS-000.pdf](#)

[5031491002-PS-000.pdf](#)

[5031491003-PS-000.pdf](#)

[PS-505406-001-001.pdf](#)

[5031490001-PS-000.pdf](#)

[5031490002-PS-000.pdf](#)

[5031491004-PS-000.pdf](#)

---

## Product Environment Compliance

### Compliance

GADSL/IMDS	Not Relevant
China RoHS	

	per SJ/T 11365-2006
EU ELV	Not Relevant
Low-Halogen Status	Not Low-Halogen per IEC 61249-2-21
REACH SVHC	Not Contained per D(2025)4165-DC (25 June 2025)
EU RoHS	Compliant per EU 2015/863

### Compliance Statements

- EU RoHS
- REACH SVHC
- Low-Halogen

### Industry Documents

- IPC 1752A Class C
- IPC 1752A Class D
- Molex Product Compliance Declaration
- IEC-62474
- chemSHERPA (xml)

### Substances of Interest

- PFAS

### EU RoHS Certificate of Compliance

### Additional Product Compliance Information

## Part Details

### General

Status	Active
Category	Connector Housings
Series	503149
Description	CLIK-Mate Plug Housing, 1.50mm Pitch, Dual Row, Positive Lock, 34 Circuits, Natural
Application	Signal, Wire-to-Board
Product Name	CLIK-Mate
UPC	884982470125

### Agency

UL	E29179
----	--------

## Physical

Circuits (maximum)	34
Color - Resin	Natural
Flammability	94HB
Gender	Plug
Glow-Wire Capable	No
Keying to Mating Part	None
Lock to Mating Part	Yes
Material - Resin	PBT
Number of Rows	2
Packaging Type	Bag
Panel Mount	No
Pitch - Mating Interface	1.50mm
Pitch - Termination Interface	1.50mm
Polarized to Mating Part	Yes
Stackable	No
Temperature Range - Operating	-40° to +105°C

---

## Mates With / Use With

### Mates with Part(s)

Description	Part Number
1.50mm Pitch CLIK-Mate Right-Angle Dual Row PCB Receptacles	<a href="#"><u>213228</u></a>
1.50mm Pitch CLIK-Mate Right-Angle Dual Row PCB Receptacles	<a href="#"><u>503148</u></a>
1.50mm Pitch CLIK-Mate Vertical Dual Row PCB Receptacles	<a href="#"><u>213227</u></a>
1.50mm Pitch CLIK-Mate Right-Angle Dual Row PCB Receptacles	<a href="#"><u>503154</u></a>

### Use with Part(s)

Description	Part Number
Pre-Crimped Lead CLIK-Mate 1.50mm Male-to-CLIK-Mate 1.50mm Male, Tin (Sn) Plating, 300.00mm Length, 24 AWG, Black	<a href="#"><u>797581011</u></a>

1.50mm Pitch CLIK-Mate Male Crimp Terminals	<u>502579</u>
1.50mm Pitch CLIK-Mate Male Crimp Terminals	<u>503429</u>
CLIK-Mate 1.50mm Pitch Male Crimp Terminals	<u>213028</u>
CLIK-Mate 1.50mm Pitch Male Crimp Terminals	<u>213029</u>
Pre-Crimped Lead Clik-Mate Male-to-Clik-Mate Male	<u>215710</u>
Pre-Crimped Lead Clik-Mate Male-to-Pigtail	<u>215711</u>